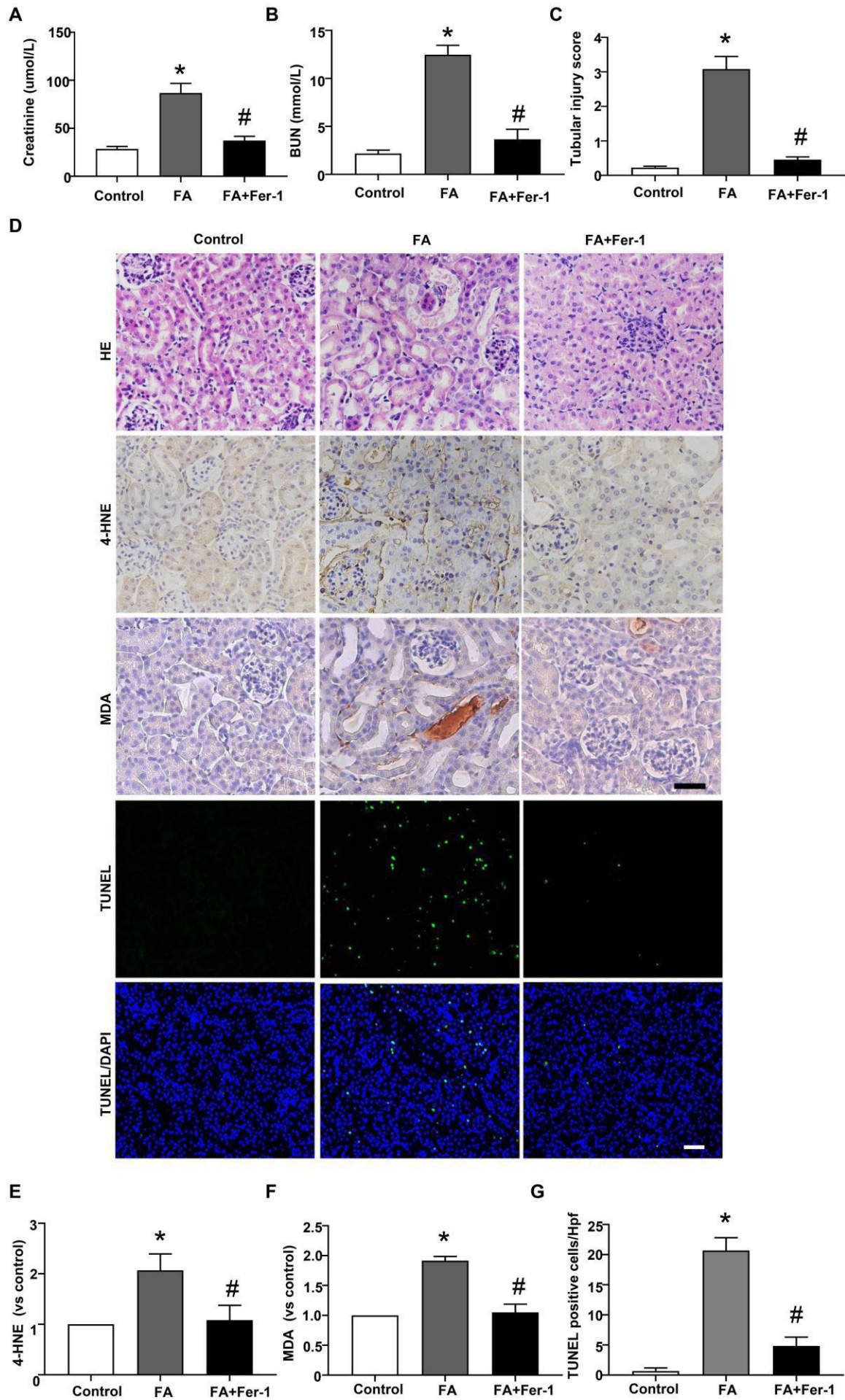
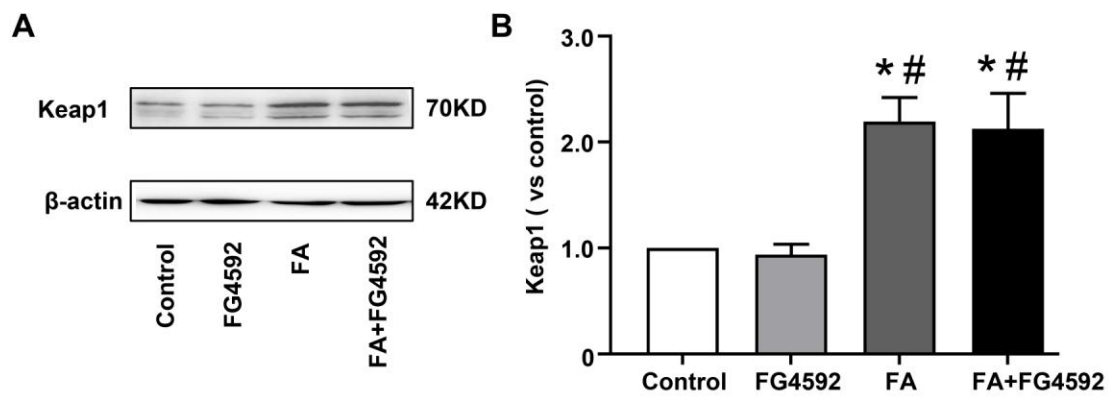


**Fig. S1**



**Supplemental Fig. 1. The renoprotective effects of Fer-1 treatment in FA-AKI.** (A and B) Renal function is assessed by (A) plasma creatinine and (B) BUN levels. (C) Kidney tubular injury score based on H&E staining. (D) Renal tubular injury was assessed by H&E staining; immunohistochemical staining of 4-HNE and MDA; cell death was assessed by TUNEL staining (green). Bar, 50  $\mu$ m. (E) Quantification of 4-HNE. (F) Quantification of MDA. (G) Absolute counting of the number of TUNEL-positive nuclei per high-power field (Hpf). The values are expressed as the means  $\pm$  SEM. \* $P$ <0.05 versus the control group. # $P$ <0.05 versus the FA group.

**Fig. S2**



**Supplemental Fig. 2. Effects of FG-4592 pretreatment on Keap1/Nrf2 pathway in FA-induced AKI.** (A) Western blotting of Keap1. (B) Semi-quantitative measurements of Keap1. The values are expressed as the means  $\pm$  SEM. \* $P$ <0.05 versus the control group. # $P$ <0.05 versus the FG-4592 group. & $P$ <0.05 versus the FA group.