

Identification of hepatic NPC1L1 as an NAFLD-risk factor evidenced by ezetimibe-mediated steatosis prevention and recovery

Toyoda Y., Takada T. *et al.*

Supplemental Data

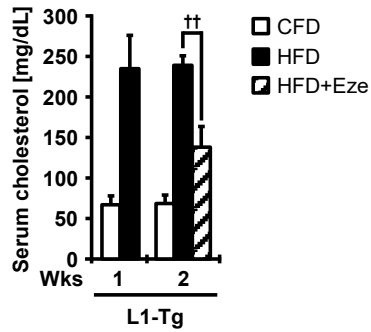


Fig. S3. Serum levels of cholesterol in L1-Tg mice fed a CFD or a HFD in the absence or presence of ezetimibe.

CFD, control fat diet; HFD, high-fat diet; Eze, ezetimibe. Data are expressed as the mean \pm SEM. $n = 7$ (CFD) and 7 (HFD) at one week; 10 (CFD), 8 (HFD), and 4 (HFD with Eze) at two weeks. Statistical analyses for significant differences were performed using a two-sided t -test ($\dagger\dagger$, $P < 0.01$).