

Supplementary information to “Comparing two conventional methods of ePCR and optimizing of Tegosoft-based ePCR”

Authors: Martin Witt, Ngoc Linh Phung, Amelie Stalke, Johanna-Gabriela Walter, Frank Stahl, Nils von Neuhoff, Thomas Scheper

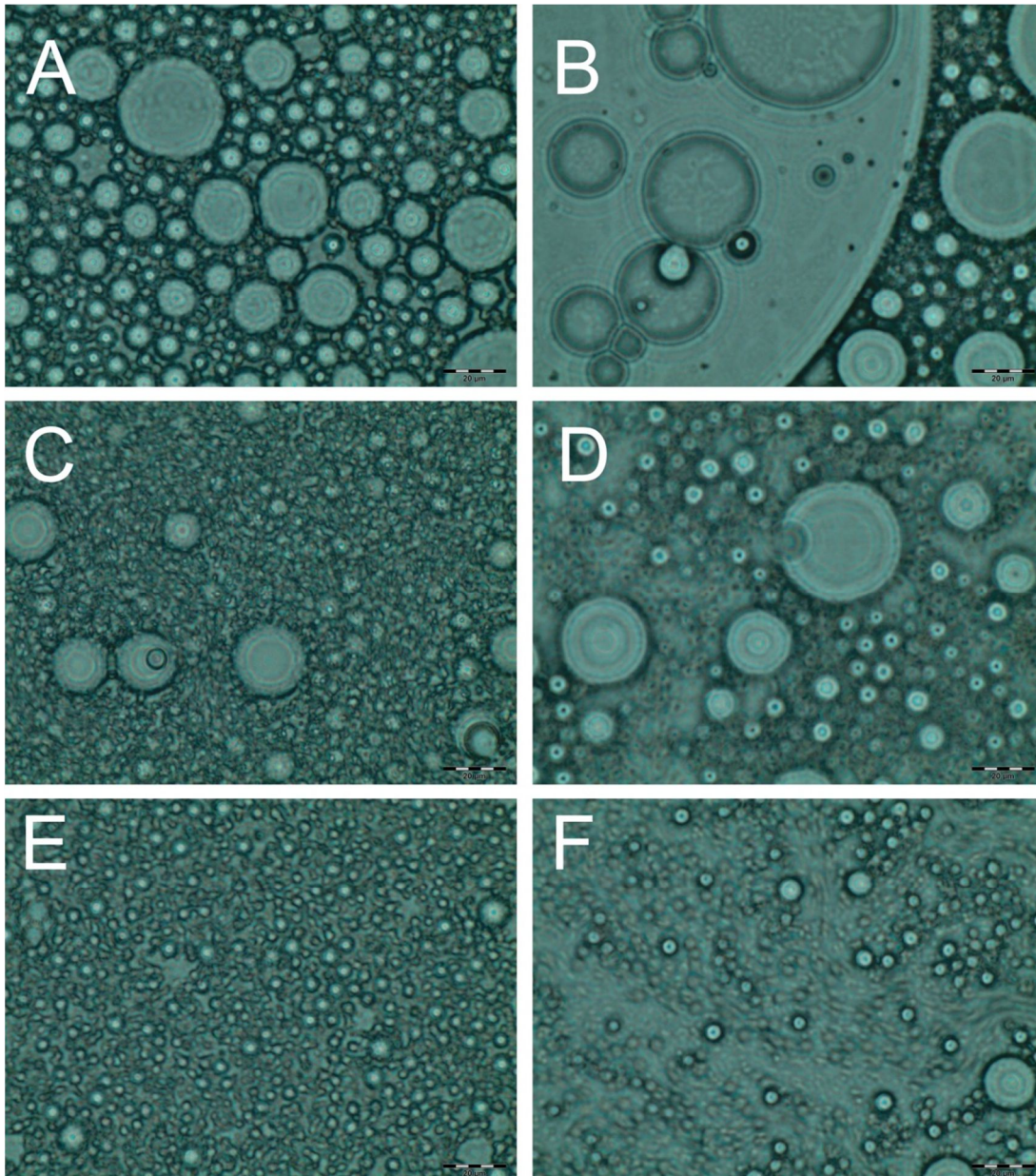


Figure S1: Impact of emulsification time on emulsion stability. For demonstration, emulsification times of 10 seconds (A+B), 30 seconds (C+D) and 60 seconds (E+F) were tested. Phase contrast images of emulsion prior to PCR (left) and after 20 cycles of PCR (right); scale bar = 20 μm