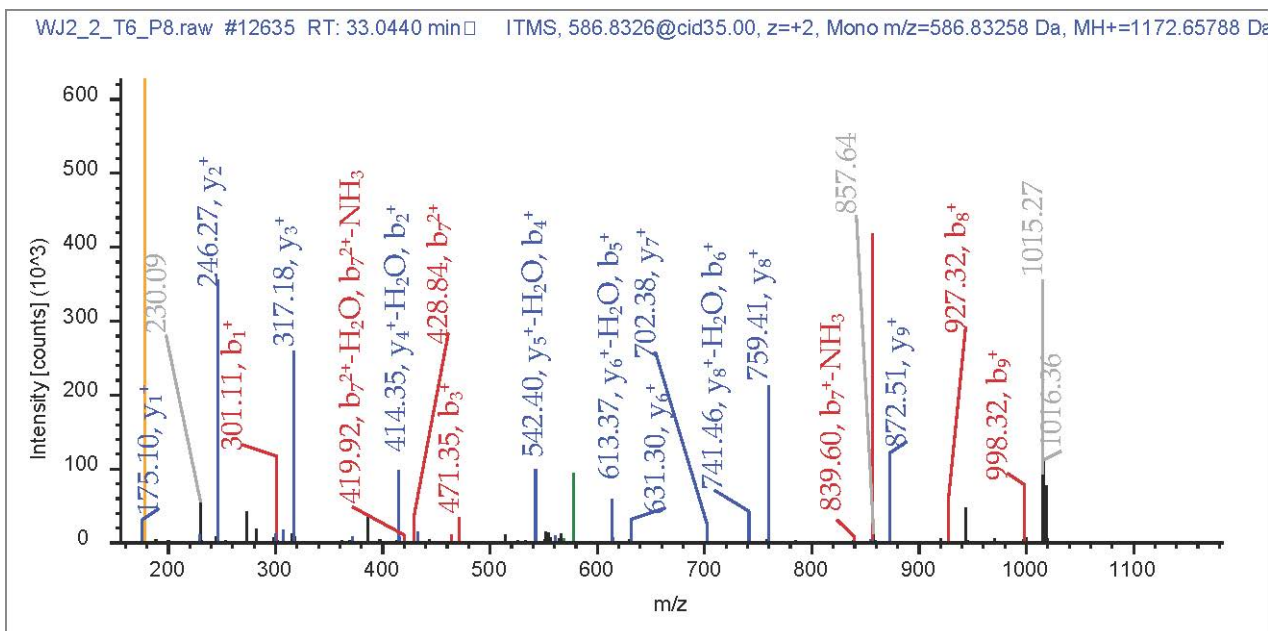
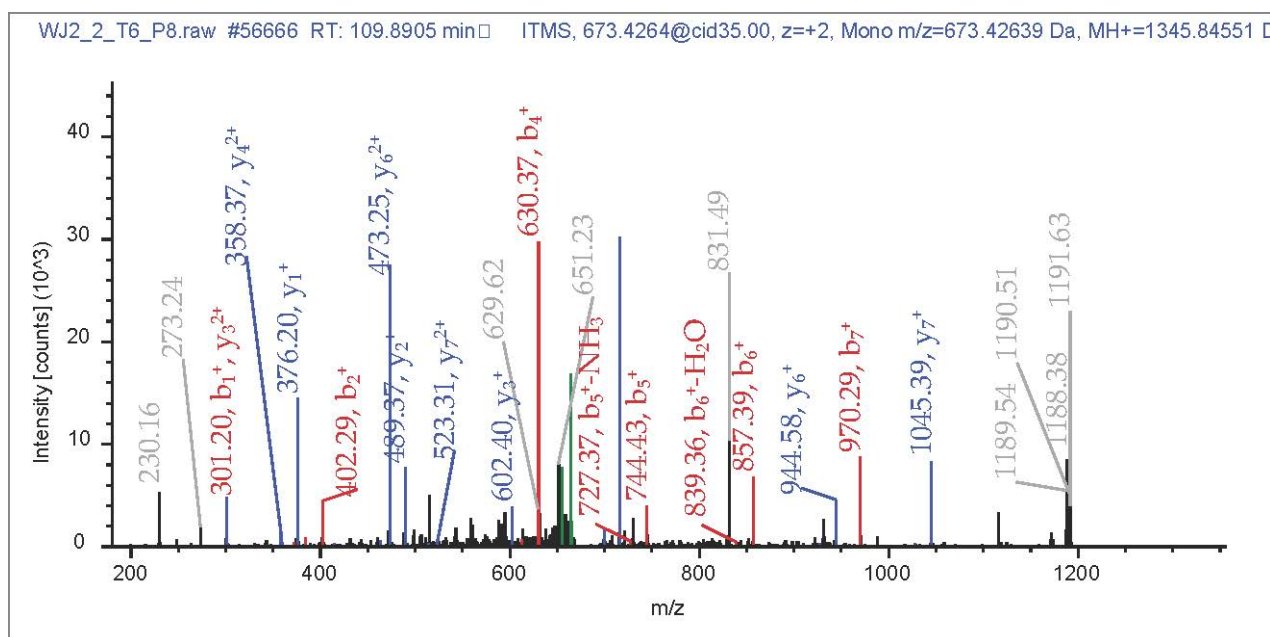


#1	b ⁺	b ²⁺	Seq.	y ⁺	y ²⁺	#2
1	301.20732	151.10730	A-TMT6plex			10
2	414.29139	207.64933	I	872.45846	436.73287	9
3	471.31285	236.16006	G	759.37439	380.19083	8
4	542.34996	271.67862	A	702.35293	351.68010	7
5	613.38708	307.19718	A	631.31581	316.16155	6
6	741.44565	371.22647	Q	560.27870	280.64299	5
7	856.47260	428.73994	D	432.22012	216.61370	4
8	927.50971	464.25849	A	317.19318	159.10023	3
9	998.54683	499.77705	A	246.15607	123.58167	2
10			R	175.11895	88.06311	1



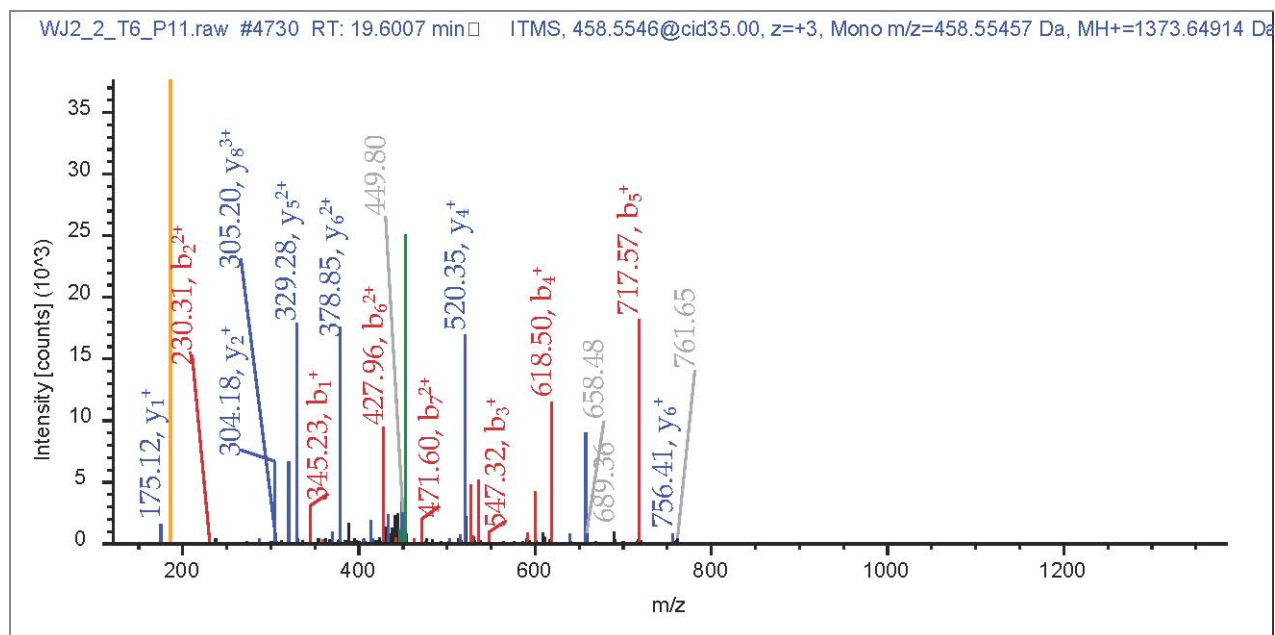
R19__845

#1	b ⁺	b ²⁺	Seq.	y ⁺	y ²⁺	#2
1	301.20732	151.10730	A-TMT6plex			8
2	402.25500	201.63114	T	1045.64548	523.32638	7
3	501.32341	251.16535	V	944.59780	472.80254	6
4	630.36601	315.68664	E	845.52938	423.26833	5
5	744.40894	372.70811	N	716.48679	358.74703	4
6	857.49300	429.25014	L	602.44386	301.72557	3
7	970.57706	485.79217	L	489.35980	245.18354	2
8			K-TMT6plex	376.27574	188.64151	1



R19_7470

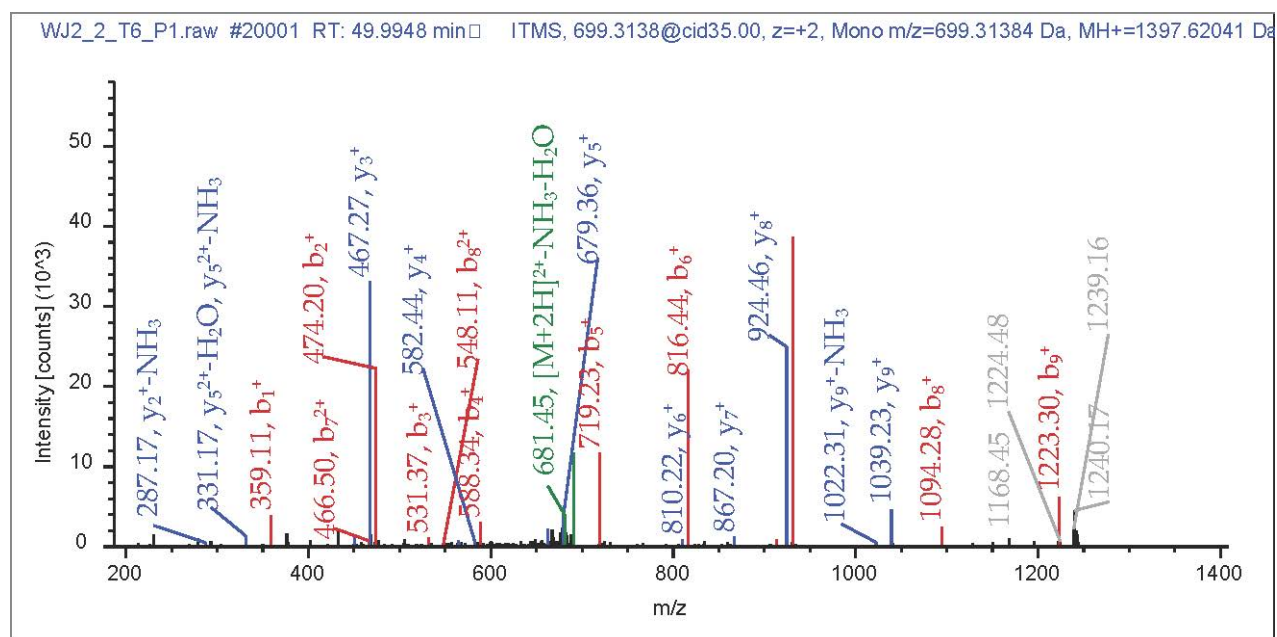
#1	b ⁺	b ²⁺	b ³⁺	Seq.	y ⁺	y ²⁺
1	345.19715	173.10221	115.73723	D-TMT6plex		
2	460.22409	230.61569	154.07955	D	1029.45958	515.23343
3	547.25612	274.13170	183.09023	S	914.43263	457.71996
4	618.29324	309.65026	206.76926	A	827.40061	414.20394
5	717.36165	359.18446	239.79207	V	756.36349	378.68538
6	854.42056	427.71392	285.47837	H	657.29508	329.15118
7	941.45259	471.22993	314.48905	S	520.23617	260.62172
8	1070.49518	535.75123	357.50325	E	433.20414	217.10571
9	1199.53778	600.27253	400.51744	E	304.16155	152.58441
10				R	175.11895	88.06311



R19_6884

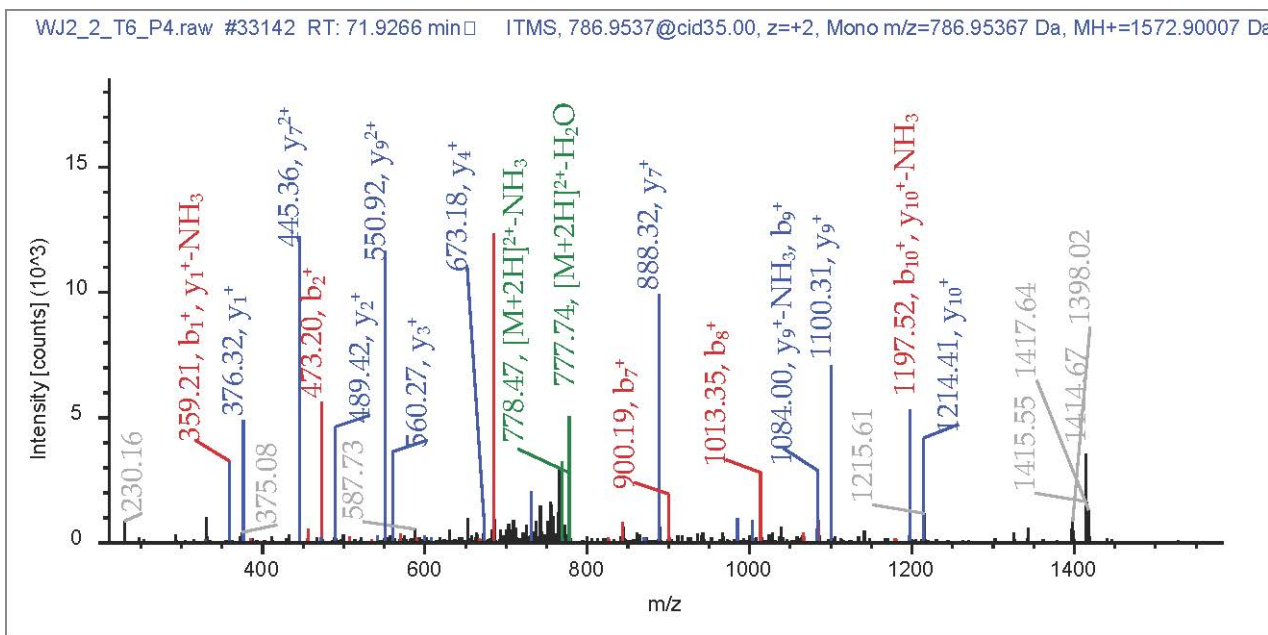
y^{3+}	#2
	10
343.82471	9
305.48240	8
276.47172	7
252.79268	6
219.76988	5
174.08357	4
145.07290	3
102.05870	2
59.04450	1

#1	b ⁺	b ²⁺	Seq.	y ⁺	y ²⁺	#2
1	359.21280	180.11004	E-TMT6plex			10
2	474.23974	237.62351	D	1039.41494	520.21111	9
3	531.26121	266.13424	G	924.38799	462.69763	8
4	588.28267	294.64497	G	867.36653	434.18690	7
5	719.32316	360.16522	M	810.34507	405.67617	6
6	816.37592	408.69160	P	679.30458	340.15593	5
7	931.40286	466.20507	D	582.25182	291.62955	4
8	1094.46619	547.73673	Y	467.22487	234.11608	3
9	1223.50878	612.25803	E	304.16155	152.58441	2
10			R	175.11895	88.06311	1



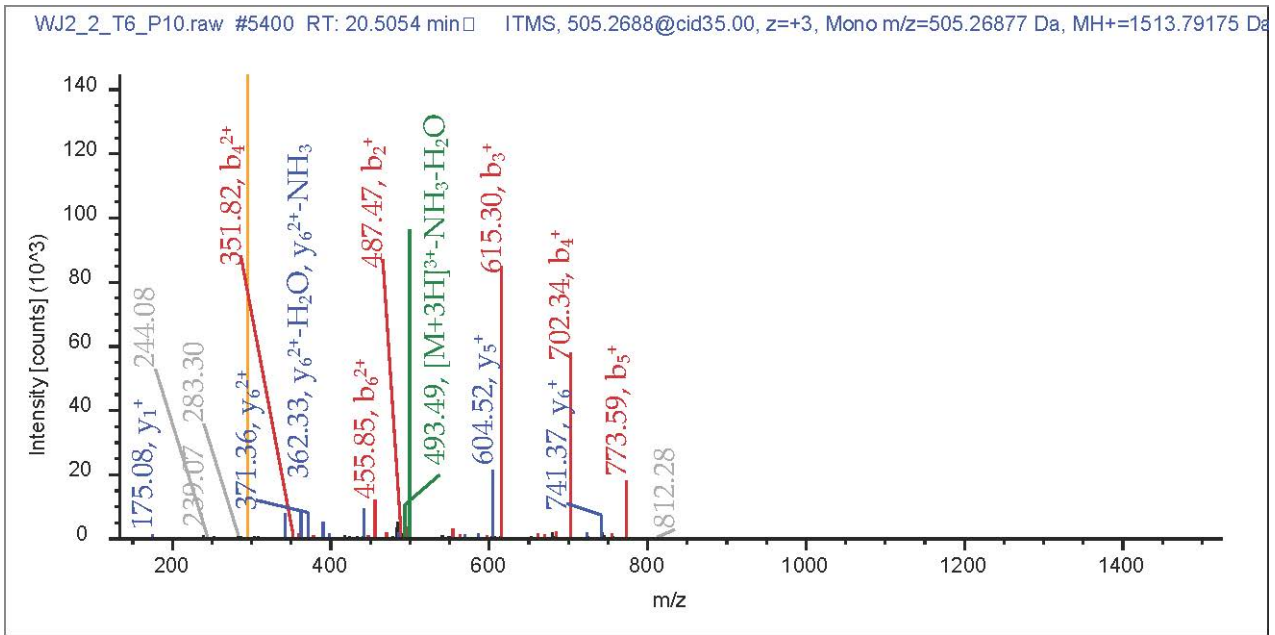
R19_2405

#1	b ⁺	b ²⁺	Seq.	y ⁺	y ²⁺	#2
1	359.21280	180.11004	E-TMT6plex			11
2	473.25573	237.13150	N	1214.69422	607.85075	10
3	570.30849	285.65788	P	1100.65129	550.82928	9
4	685.33544	343.17136	D	1003.59853	502.30290	8
5	786.38311	393.69520	T	888.57158	444.78943	7
6	843.40458	422.20593	G	787.52391	394.26559	6
7	900.42604	450.71666	G	730.50244	365.75486	5
8	1013.51011	507.25869	I	673.48098	337.24413	4
9	1084.54722	542.77725	A	560.39691	280.70210	3
10	1197.63128	599.31928	I	489.35980	245.18354	2
11			K-TMT6plex	376.27574	188.64151	1



R19_3280

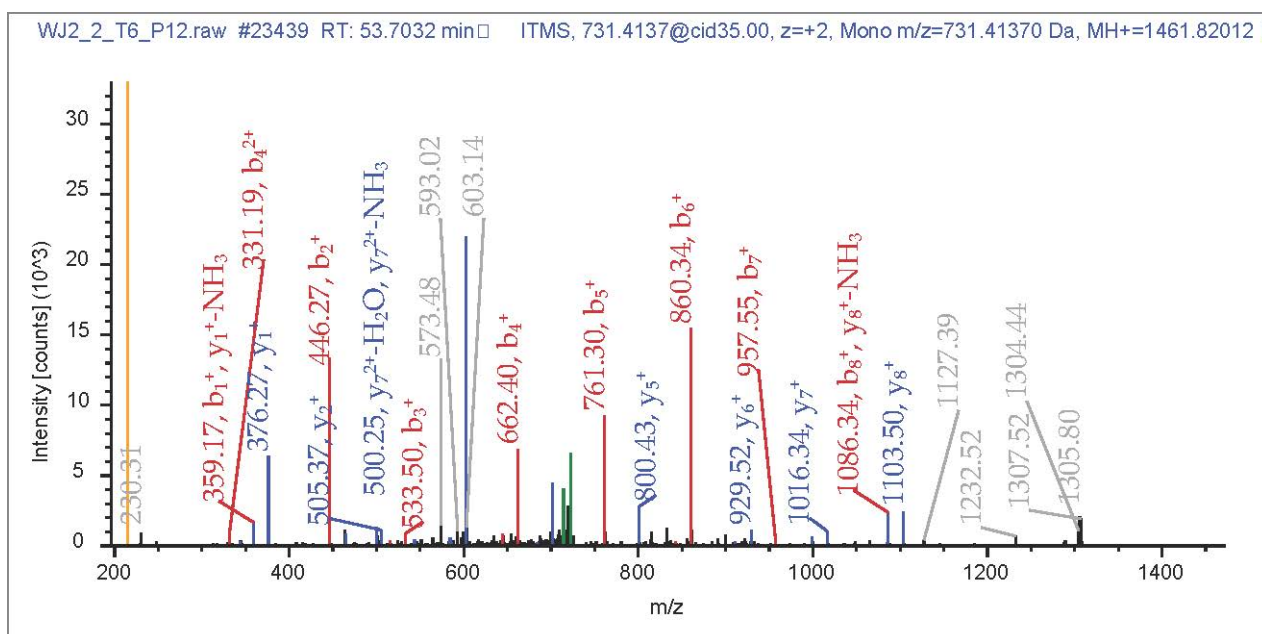
#1	b ⁺	b ²⁺	b ³⁺	Seq.	y ⁺	y ²⁺
1	359.21280	180.11004	120.40912	E-TMT6plex		
2	487.27138	244.13933	163.09531	Q	1155.58651	578.29689
3	615.32996	308.16862	205.78150	Q	1027.52793	514.26760
4	702.36198	351.68463	234.79218	S	899.46935	450.23832
5	773.39910	387.20319	258.47122	A	812.43733	406.72230
6	910.45801	455.73264	304.15752	H	741.40021	371.20374
7	1011.50569	506.25648	337.84008	T	604.34130	302.67429
8	1124.58975	562.79851	375.53477	I	503.29362	252.15045
9	1211.62178	606.31453	404.54544	S	390.20956	195.60842
10	1339.68036	670.34382	447.23164	Q	303.17753	152.09240
11				R	175.11895	88.06311



R19_1000

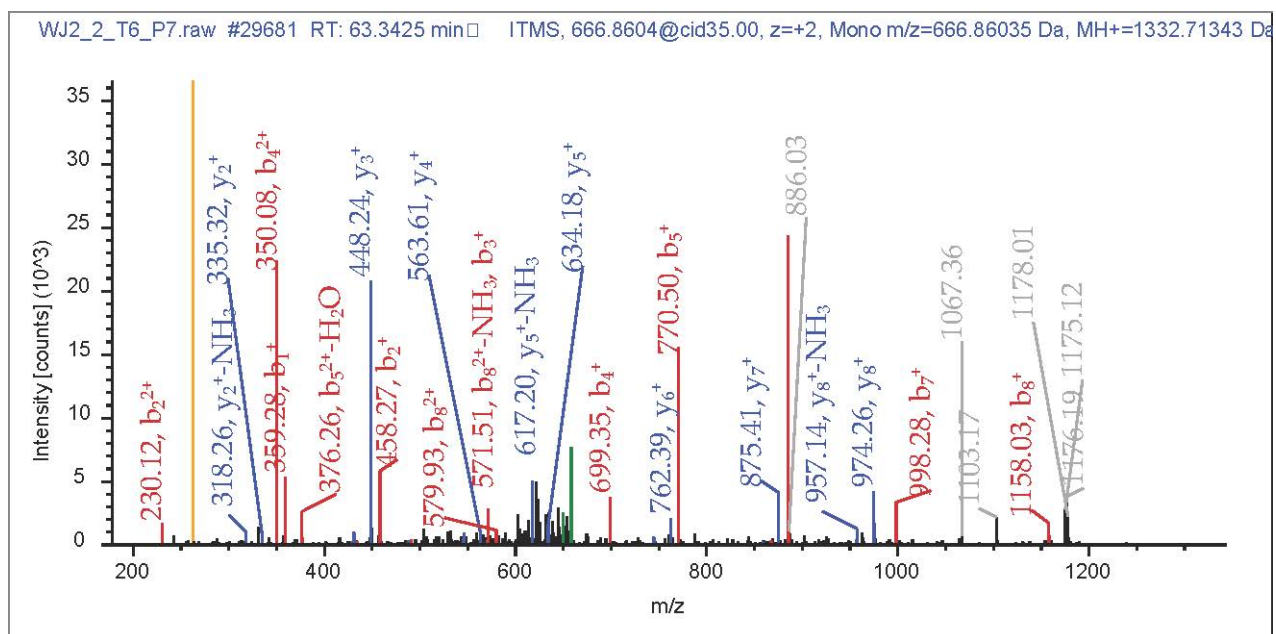
y^{3+}	#2
	11
385.86702	10
343.18083	9
300.49464	8
271.48396	7
247.80492	6
202.11862	5
168.43606	4
130.74137	3
101.73069	2
59.04450	1

#1	b ⁺	b ²⁺	Seq.	y ⁺	y ²⁺	#2
1	359.21280	180.11004	E-TMT6plex			9
2	446.24483	223.62605	S	1103.61457	552.31092	8
3	533.27686	267.14207	S	1016.58254	508.79491	7
4	662.31945	331.66336	E	929.55051	465.27890	6
5	761.38787	381.19757	V	800.50792	400.75760	5
6	860.45628	430.73178	V	701.43951	351.22339	4
7	957.50904	479.25816	P	602.37109	301.68918	3
8	1086.55164	543.77946	E	505.31833	253.16280	2
9			K-TMT6plex	376.27574	188.64151	1



R19_5177

#1	b ⁺	b ²⁺	Seq.	y ⁺	y ²⁺	#2
1	359.21280	180.11004	E-TMT6plex			9
2	458.28122	229.64425	V	974.50878	487.75803	8
3	571.36528	286.18628	I	875.44036	438.22382	7
4	699.42386	350.21557	Q	762.35630	381.68179	6
5	770.46097	385.73412	A	634.29772	317.65250	5
6	885.48791	443.24760	D	563.26061	282.13394	4
7	998.57198	499.78963	I	448.23366	224.62047	3
8	1158.60263	579.80495	Carbamidometh	335.14960	168.07844	2
9			R	175.11895	88.06311	1

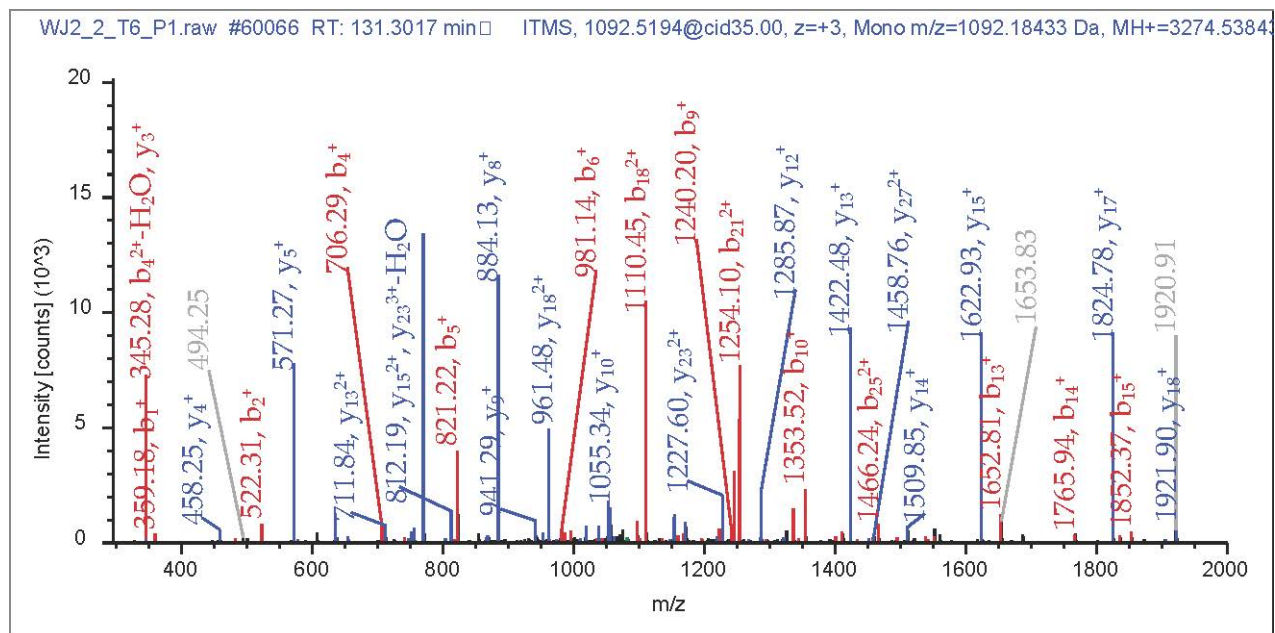


R19_7456

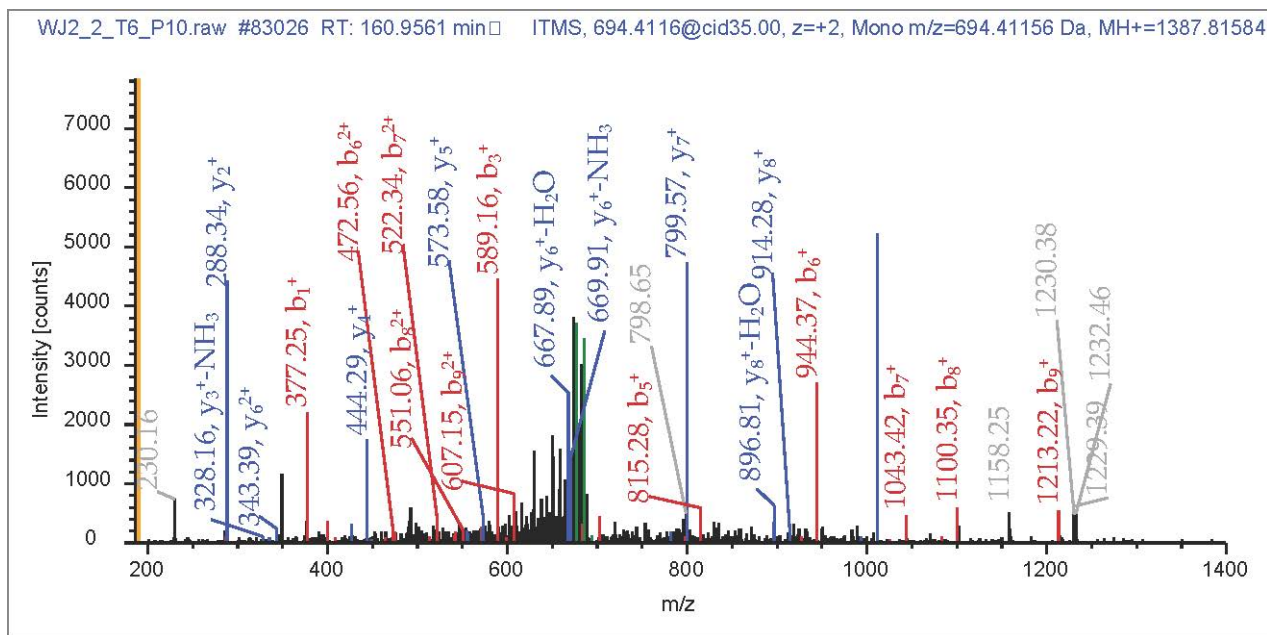
#1	b ⁺	b ²⁺	b ³⁺	Seq.	y ⁺	y ²⁺
1	359.21280	180.11004	120.40912	E-TMT6plex		
2	522.27613	261.64170	174.76356	Y	2916.33161	1458.66944
3	635.36019	318.18374	212.45825	I	2753.26828	1377.13778
4	706.39731	353.70229	236.13729	A	2640.18421	1320.59574
5	821.42425	411.21576	274.47960	D	2569.14710	1285.07719
6	981.45490	491.23109	327.82315	Carbamidomett	2454.12016	1227.56372
7	1096.48184	548.74456	366.16547	D	2294.08951	1147.54839
8	1153.50331	577.25529	385.17262	G	2179.06257	1090.03492
9	1240.53533	620.77131	414.18330	S	2122.04110	1061.52419
10	1353.61940	677.31334	451.87798	L	2035.00907	1018.00817
11	1450.67216	725.83972	484.22891	P	1921.92501	961.46614
12	1537.70419	769.35573	513.23958	S	1824.87225	912.93976
13	1652.73113	826.86920	551.58190	D	1737.84022	869.42375
14	1765.81520	883.41124	589.27658	L	1622.81327	811.91028
15	1852.84723	926.92725	618.28726	S	1509.72921	755.36824
16	1989.90614	995.45671	663.97356	H	1422.69718	711.85223
17	2104.93308	1052.97018	702.31588	D	1285.63827	643.32277
18	2219.96002	1110.48365	740.65819	D	1170.61133	585.80930
19	2334.00295	1167.50511	778.67250	N	1055.58438	528.29583
20	2391.02441	1196.01585	797.67966	G	941.54146	471.27437
21	2506.05136	1253.52932	836.02197	D	884.51999	442.76363
22	2603.10412	1302.05570	868.37289	P	769.49305	385.25016
23	2704.15180	1352.57954	902.05545	T	672.44029	336.72378
24	2817.23586	1409.12157	939.75014	I	571.39261	286.19994
25	2930.31993	1465.66360	977.44483	L	458.30854	229.65791
26	2987.34139	1494.17433	996.45198	G	345.22448	173.11588
27	3100.42545	1550.71637	1034.14667	L	288.20302	144.60515
28				R	175.11895	88.06311

y ³⁺	#2
	28
972.78205	27
918.42761	26
880.73292	25
857.05388	24
818.71157	23
765.36802	22
727.02571	21
708.01855	20
679.00788	19
641.31319	18
608.96227	17
579.95159	16
541.60928	15
503.91459	14
474.90391	13
429.21761	12
390.87529	11
352.53298	10
314.51867	9
295.51152	8
257.16920	7
224.81828	6
191.13572	5
153.44103	4
115.74634	3
96.73919	2
59.04450	1

R19_9696

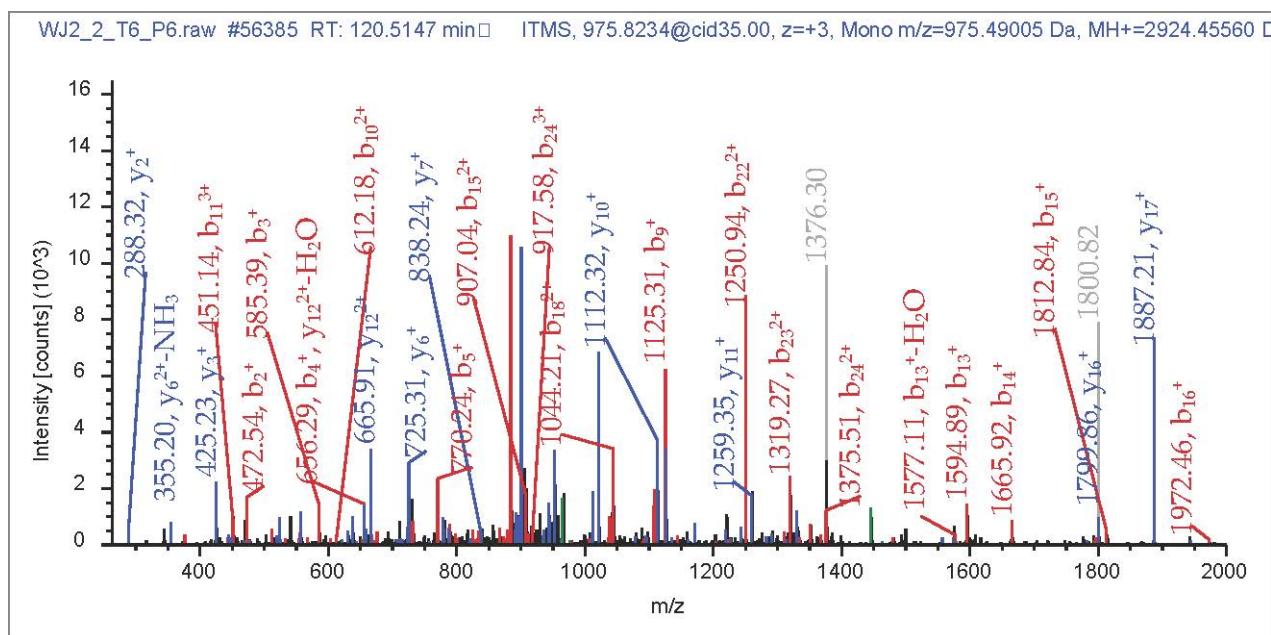


#1	b ⁺	b ²⁺	Seq.	y ⁺	y ²⁺	#2
1	377.23862	189.12295	F-TMT6plex			10
2	474.29139	237.64933	P	1011.58332	506.29530	9
3	589.31833	295.16280	D	914.53056	457.76892	8
4	702.40239	351.70483	L	799.50361	400.25545	7
5	815.48646	408.24687	L	686.41955	343.71341	6
6	944.52905	472.76816	E	573.33549	287.17138	5
7	1043.59746	522.30237	V	444.29289	222.65009	4
8	1100.61893	550.81310	G	345.22448	173.11588	3
9	1213.70299	607.35513	L	288.20302	144.60515	2
10			R	175.11895	88.06311	1



R19_3303

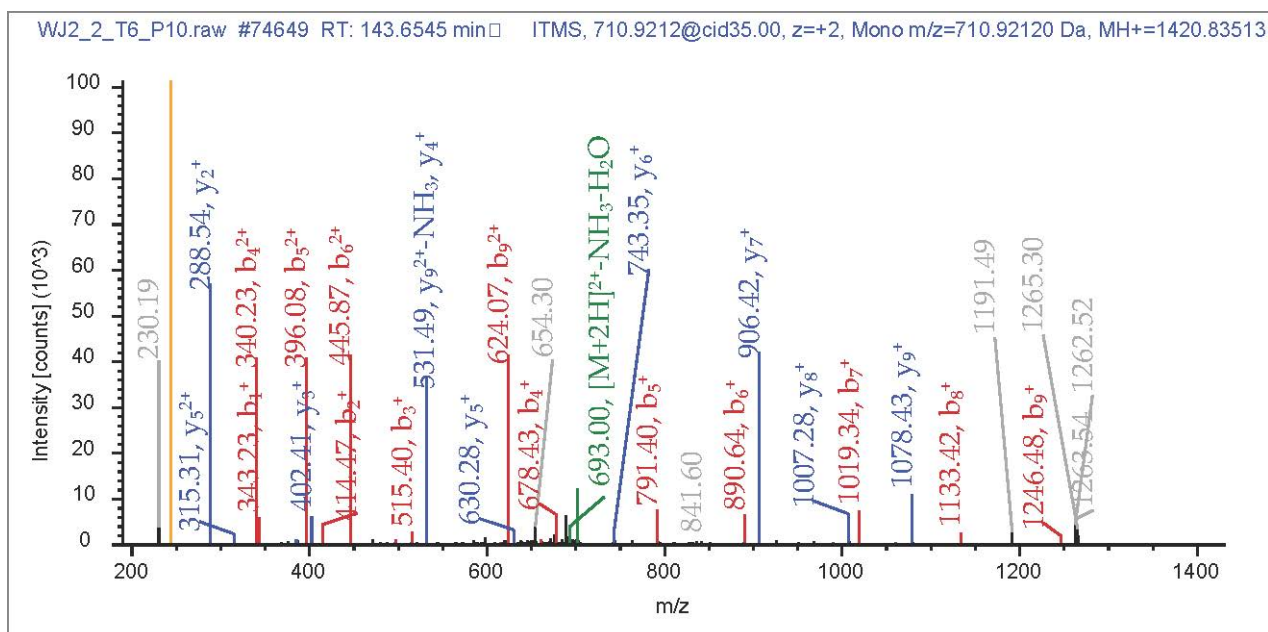
#1	b ⁺	b ²⁺	b ³⁺	Seq.	y ⁺	y ²⁺
1	343.25427	172.13077	115.08961	I-TMT6plex		
2	472.29687	236.65207	158.10381	E	2582.20522	1291.60625
3	585.38093	293.19410	195.79849	I	2453.16263	1227.08495
4	656.41804	328.71266	219.47753	A	2340.07857	1170.54292
5	770.46097	385.73412	257.49184	N	2269.04145	1135.02436
6	884.50390	442.75559	295.50615	N	2154.99853	1078.00290
7	981.55666	491.28197	327.85707	P	2040.95560	1020.98144
8	1038.57813	519.79270	346.86423	G	1943.90283	972.45506
9	1125.61015	563.30872	375.87490	S	1886.88137	943.94432
10	1222.66292	611.83510	408.22582	P	1799.84934	900.42831
11	1351.70551	676.35639	451.24002	E	1702.79658	851.90193
12	1479.76409	740.38568	493.92621	Q	1573.75399	787.38063
13	1594.79103	797.89915	532.26853	D	1445.69541	723.35134
14	1665.82814	833.41771	555.94757	A	1330.66846	665.83787
15	1812.89656	906.95192	604.97037	F	1259.63135	630.31931
16	1972.92721	986.96724	658.31392	Carbamidomett	1112.56294	556.78511
17	2029.94867	1015.47797	677.32107	G	952.53229	476.76978
18	2086.97013	1043.98871	696.32823	G	895.51083	448.25905
19	2200.05420	1100.53074	734.02292	L	838.48936	419.74832
20	2287.08623	1144.04675	763.03359	S	725.40530	363.20629
21	2401.12915	1201.06822	801.04790	N	638.37327	319.69027
22	2500.19757	1250.60242	834.07071	V	524.33034	262.66881
23	2637.25648	1319.13188	879.75701	H	425.26193	213.13460
24	2750.34054	1375.67391	917.45170	I	288.20302	144.60515
25				R	175.11895	88.06311



R19_2295

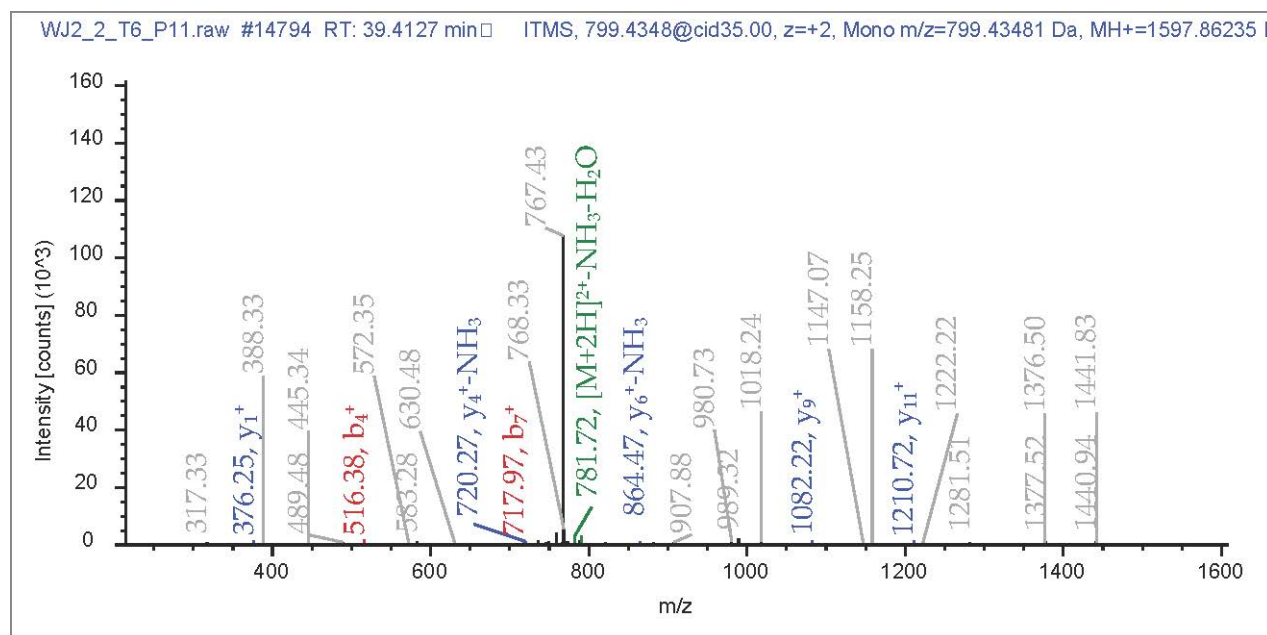
y^{3+}	#2
	25
861.40659	24
818.39239	23
780.69771	22
757.01867	21
719.00436	20
680.99005	19
648.63913	18
629.63197	17
600.62130	16
568.27038	15
525.25618	14
482.56999	13
444.22767	12
420.54863	11
371.52583	10
318.18228	9
299.17513	8
280.16797	7
242.47328	6
213.46261	5
175.44830	4
142.42549	3
96.73919	2
59.04450	1

#1	b ⁺	b ²⁺	Seq.	y ⁺	y ²⁺	#2
1	343.25427	172.13077	L-TMT6plex			10
2	414.29139	207.64933	A	1078.58914	539.79821	9
3	515.33906	258.17317	T	1007.55202	504.27965	8
4	678.40239	339.70483	Y	906.50434	453.75581	7
5	791.48646	396.24687	L	743.44101	372.22415	6
6	890.55487	445.78107	V	630.35695	315.68211	5
7	1019.59746	510.30237	E	531.28854	266.14791	4
8	1133.64039	567.32383	N	402.24594	201.62661	3
9	1246.72446	623.86587	L	288.20302	144.60515	2
10			R	175.11895	88.06311	1



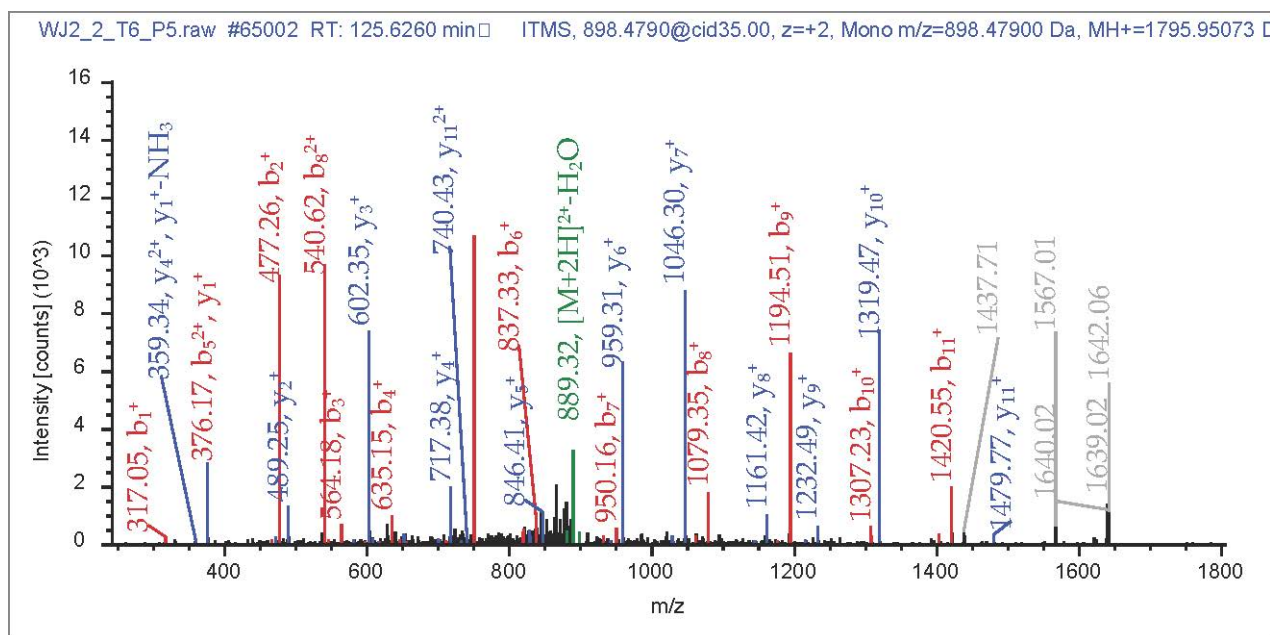
R19_6690

#1	b ⁺	b ²⁺	Seq.	y ⁺	y ²⁺	#2
1	317.20224	159.10476	S-TMT6plex			13
2	388.23935	194.62331	A	1281.66702	641.33715	12
3	445.26081	223.13405	G	1210.62990	605.81859	11
4	516.29793	258.65260	A	1153.60844	577.30786	10
5	573.31939	287.16333	G	1082.57133	541.78930	9
6	630.34086	315.67407	G	1025.54986	513.27857	8
7	717.37288	359.19008	S	968.52840	484.76784	7
8	804.40491	402.70609	S	881.49637	441.25182	6
9	861.42638	431.21683	G	794.46434	397.73581	5
10	962.47405	481.74067	T	737.44288	369.22508	4
11	1109.50945	555.25837	M-Oxidation	636.39520	318.70124	3
12	1222.59352	611.80040	L	489.35980	245.18354	2
13			K-TMT6plex	376.27574	188.64151	1



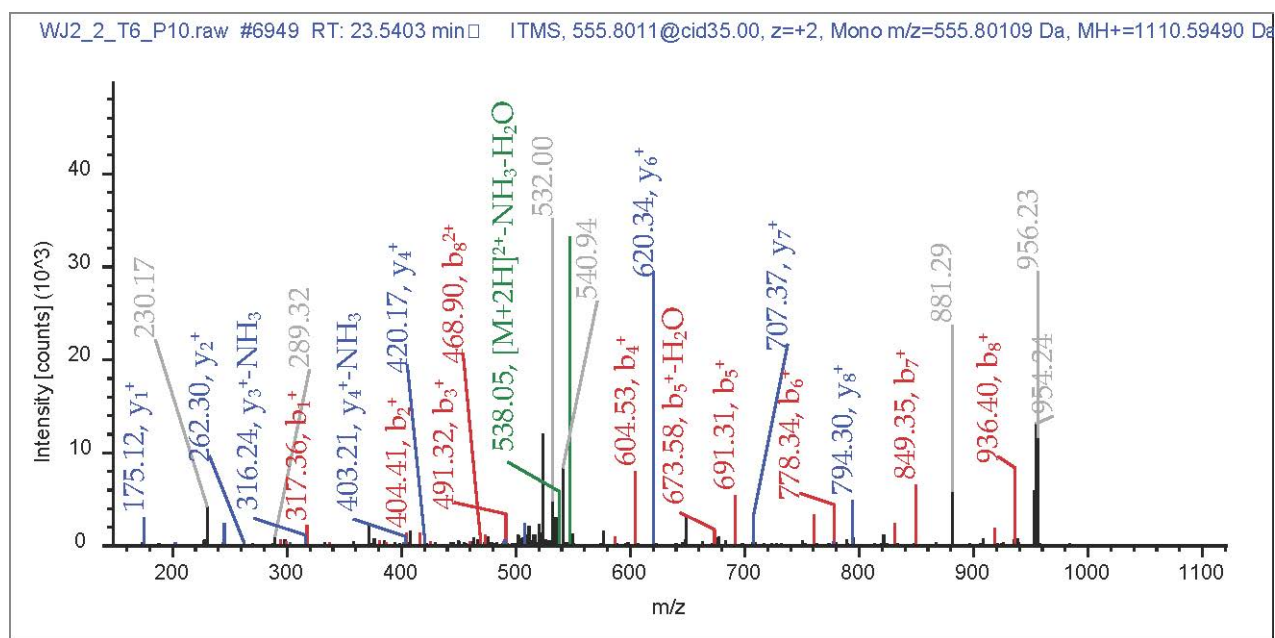
R19_4354

#1	b ⁺	b ²⁺	Seq.	y ⁺	y ²⁺	#2
1	317.20224	159.10476	S-TMT6plex			12
2	477.23289	239.12008	Carbamidomett	1479.75623	740.38175	11
3	564.26491	282.63610	S	1319.72558	660.36643	10
4	635.30203	318.15465	A	1232.69355	616.85041	9
5	750.32897	375.66812	D	1161.65644	581.33186	8
6	837.36100	419.18414	S	1046.62949	523.81838	7
7	950.44506	475.72617	L	959.59746	480.30237	6
8	1079.48766	540.24747	E	846.51340	423.76034	5
9	1194.51460	597.76094	D	717.47081	359.23904	4
10	1307.59866	654.30297	L	602.44386	301.72557	3
11	1420.68273	710.84500	L	489.35980	245.18354	2
12			K-TMT6plex	376.27574	188.64151	1



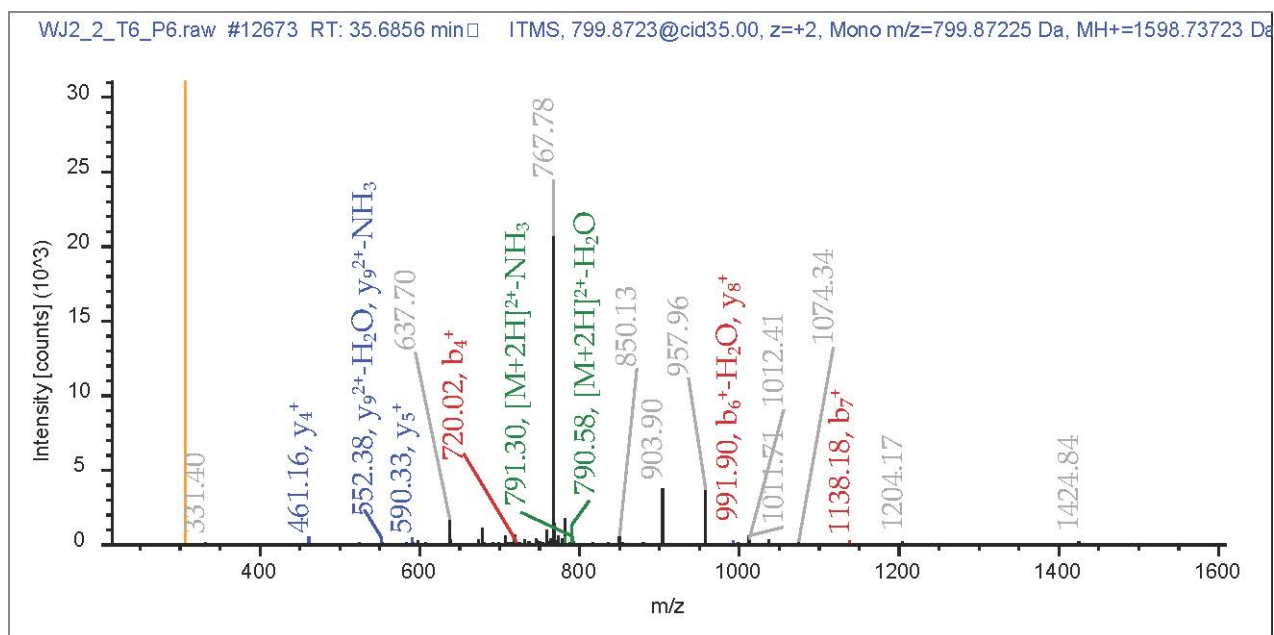
R19_9448

#1	b ⁺	b ²⁺	Seq.	y ⁺	y ²⁺	#2
1	317.20224	159.10476	S-TMT6plex			9
2	404.23427	202.62077	S	794.40027	397.70377	8
3	491.26629	246.13679	S	707.36824	354.18776	7
4	604.35036	302.67882	L	620.33621	310.67175	6
5	691.38239	346.19483	S	507.25215	254.12971	5
6	778.41441	389.71085	S	420.22012	210.61370	4
7	849.45153	425.22940	A	333.18809	167.09769	3
8	936.48356	468.74542	S	262.15098	131.57913	2
9			R	175.11895	88.06311	1



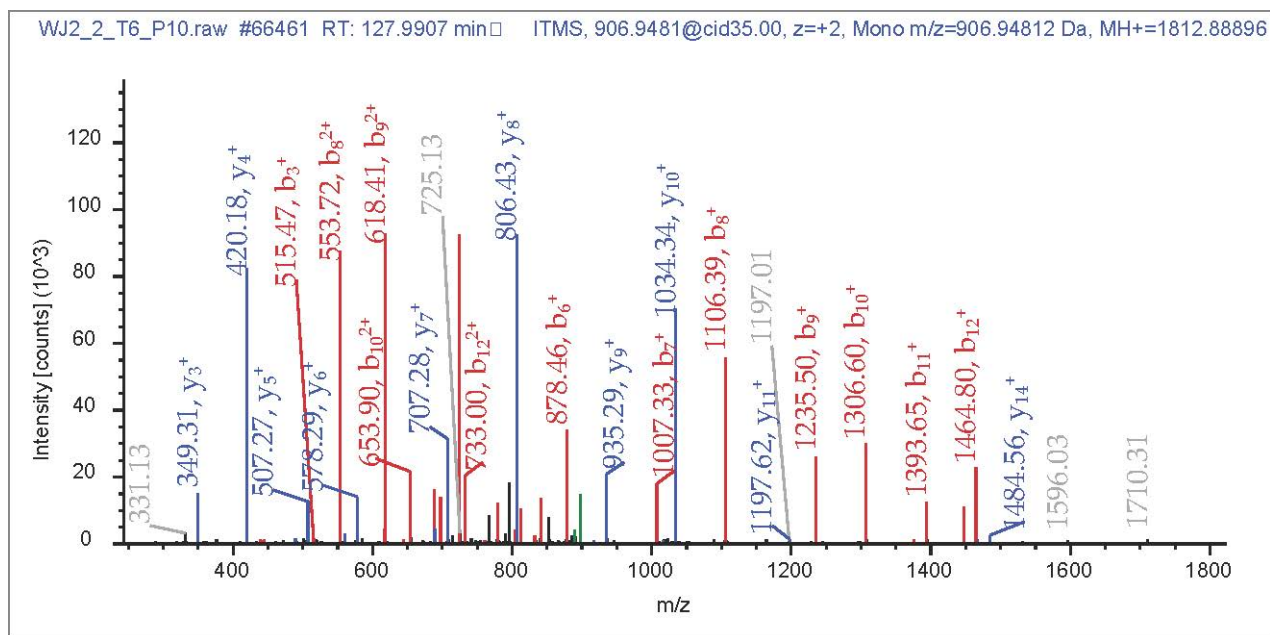
R19_8545

#1	b ⁺	b ²⁺	Seq.	y ⁺	y ²⁺	#2
1	331.21789	166.11258	T-TMT6plex			11
2	478.25329	239.63028	M-Oxidation	1268.52456	634.76592	10
3	607.29588	304.15158	E	1121.48916	561.24822	9
4	720.37994	360.69361	I	992.44657	496.72692	8
5	880.41059	440.70893	Carbamidomett	879.36251	440.18489	7
6	1009.45319	505.23023	E	719.33186	360.16957	6
7	1138.49578	569.75153	E	590.28926	295.64827	5
8	1252.53871	626.77299	N	461.24667	231.12697	4
9	1323.57582	662.29155	A	347.20374	174.10551	3
10	1424.62350	712.81539	T	276.16663	138.58695	2
11			R	175.11895	88.06311	1



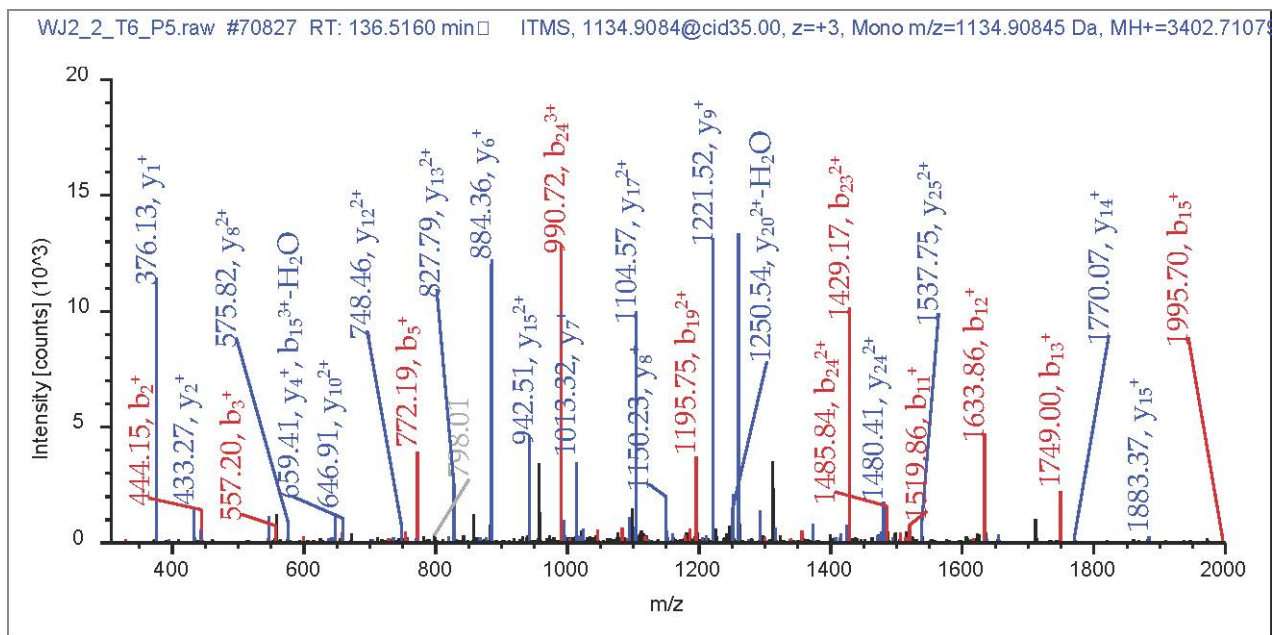
R19_8696

#1	b ⁺	b ²⁺	Seq.	y ⁺	y ²⁺	#2
1	329.23862	165.12295	V-TMT6plex			15
2	444.26557	222.63642	D	1484.65735	742.83231	14
3	515.30268	258.15498	A	1369.63041	685.31884	13
4	616.35036	308.67882	T	1298.59329	649.80029	12
5	779.41369	390.21048	Y	1197.54562	599.27645	11
6	878.48210	439.74469	V	1034.48229	517.74478	10
7	1007.52469	504.26598	E	935.41387	468.21057	9
8	1106.59311	553.80019	V	806.37128	403.68928	8
9	1235.63570	618.32149	E	707.30287	354.15507	7
10	1306.67281	653.84005	A	578.26027	289.63377	6
11	1393.70484	697.35606	S	507.22316	254.11522	5
12	1464.74196	732.87462	A	420.19113	210.59920	4
13	1624.77260	812.88994	Carbamidometh	349.15402	175.08065	3
14	1681.79407	841.40067	G	189.12337	95.06532	2
15			L	132.10191	66.55459	1



R19_8870

#1	b ⁺	b ²⁺	b ³⁺	Seq.	y ⁺	y ²⁺
1	329.23862	165.12295	110.41773	V-TMT6plex		
2	444.26557	222.63642	148.76004	D	3074.47605	1537.74166
3	557.34963	279.17845	186.45473	I	2959.44911	1480.22819
4	658.39731	329.70229	220.13729	T	2846.36504	1423.68616
5	772.44024	386.72376	258.15160	N	2745.31737	1373.16232
6	885.52430	443.26579	295.84628	I	2631.27444	1316.14086
7	982.57706	491.79217	328.19721	P	2518.19037	1259.59883
8	1083.62474	542.31601	361.87976	T	2421.13761	1211.07244
9	1196.70881	598.85804	399.57445	L	2320.08993	1160.54860
10	1356.73945	678.87337	452.91800	Carbamidomett	2207.00587	1104.00657
11	1519.80278	760.40503	507.27245	Y	2046.97522	1023.99125
12	1633.84571	817.42649	545.28675	N	1883.91189	942.45958
13	1748.87265	874.93996	583.62907	D	1769.86896	885.43812
14	1908.90330	954.95529	636.97262	Carbamidomett	1654.84202	827.92465
15	1995.93533	998.47130	665.98329	S	1494.81137	747.90932
16	2110.96227	1055.98477	704.32561	D	1407.77934	704.39331
17	2181.99939	1091.50333	728.00465	A	1292.75240	646.87984
18	2253.03650	1127.02189	751.68368	A	1221.71529	611.36128
19	2390.09541	1195.55134	797.36999	H	1150.67817	575.84273
20	2519.13800	1260.07264	840.38419	E	1013.61926	507.31327
21	2616.19077	1308.59902	872.73511	P	884.57667	442.79197
22	2744.24935	1372.62831	915.42130	Q	787.52391	394.26559
23	2857.33341	1429.17034	953.11599	L	659.46533	330.23630
24	2970.41747	1485.71238	990.81068	L	546.38126	273.69427
25	3027.43894	1514.22311	1009.81783	G	433.29720	217.15224
26				K-TMT6plex	376.27574	188.64151



R19_10303

y^{3+}	#2
	26
1025.49687	25
987.15455	24
949.45987	23
915.77731	22
877.76300	21
840.06831	20
807.71739	19
774.03483	18
736.34014	17
682.99659	16
628.64215	15
590.62784	14
552.28552	13
498.94198	12
469.93130	11
431.58898	10
407.90995	9
384.23091	8
338.54461	7
295.53041	6
263.17949	5
220.49329	4
182.79861	3
145.10392	2
126.09676	1