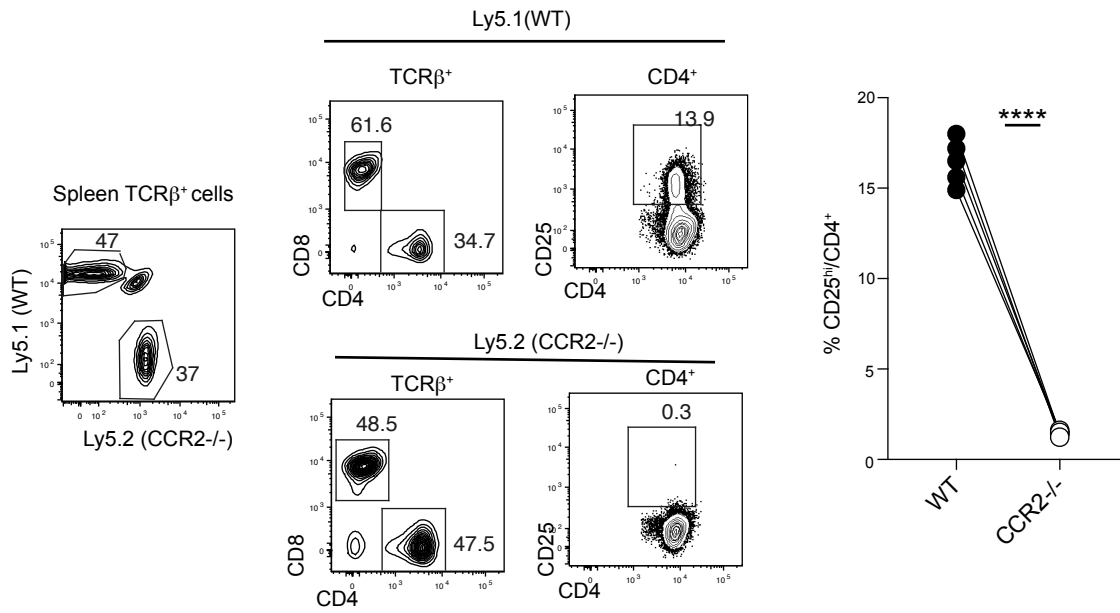
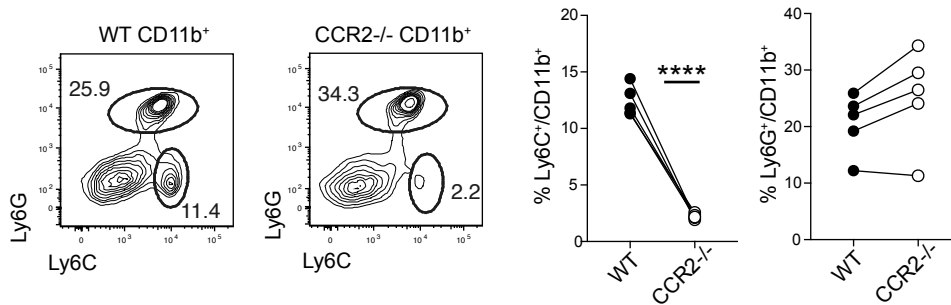


A.



B.



Supplemental Figure 2. A&B. CCR2 deficiency intrinsically reduces spleen CD25 hi Tregs and Ly6C $^+$ CD11b $^+$ monocytes. Lethally irradiated Ly5.1/C57BL/6 (Ly5.2) recipients were reconstituted with bone marrow cells from WT (Ly5.1) and CCR2 $^{-/-}$ mice (Ly5.2). Ten weeks after reconstitution, spleen cells from 5 individual mice were evaluated for T cell compartment (A) and CD11b $^+$ myeloid cells (B). * P<0.05, **P<0.01, ***P<0.001, ****P<0.0001 by paired t test.