

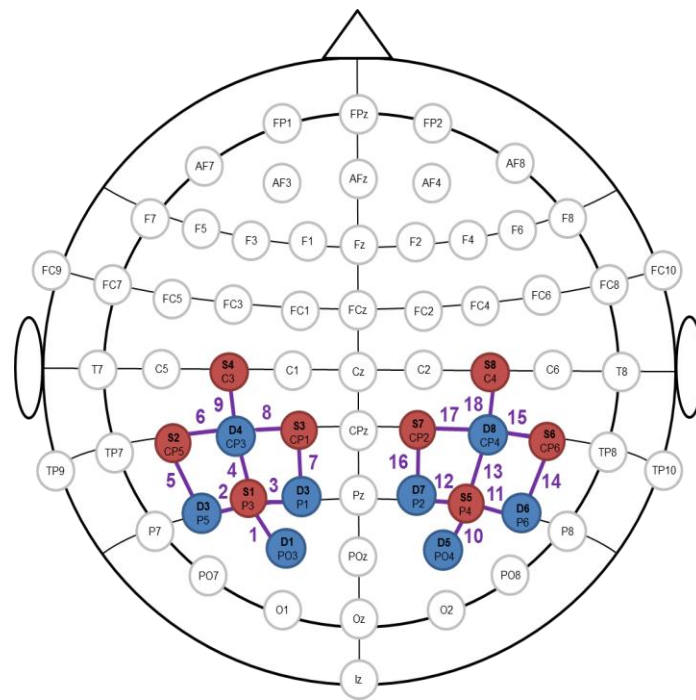
## SUPPLEMENTARY MATERIAL

### Paper

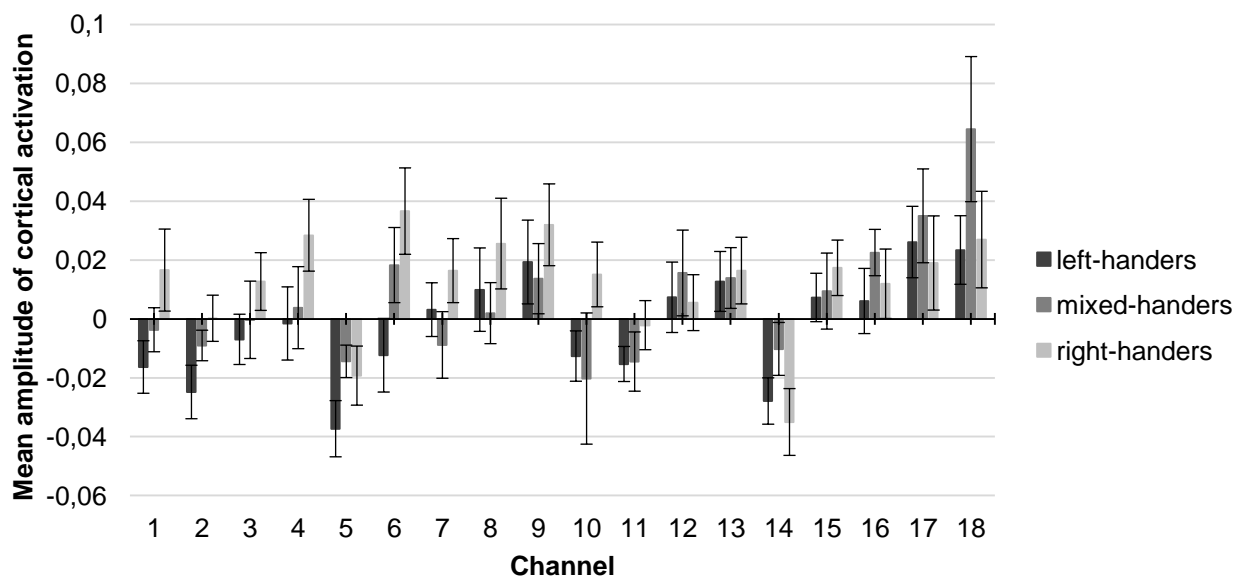
Functional lateralization of arithmetic processing in the intraparietal sulcus is associated with handedness

### Authors

Christina Artemenko, Maria A. Sitnikova, Mojtaba Soltanlou, Thomas Dresler, Hans-Christoph Nuerk



**Figure S1.** fNIRS probeset over the left and right parietal cortex. Positions of the optodes (red: sources; blue: detectors) are indicated according to the international 10-20 system and channels are labeled by numbers.



**Figure S2.** Average activation for each channel in left-, mixed- and right-handers. Error bars depict 1 SE of  $M$ .