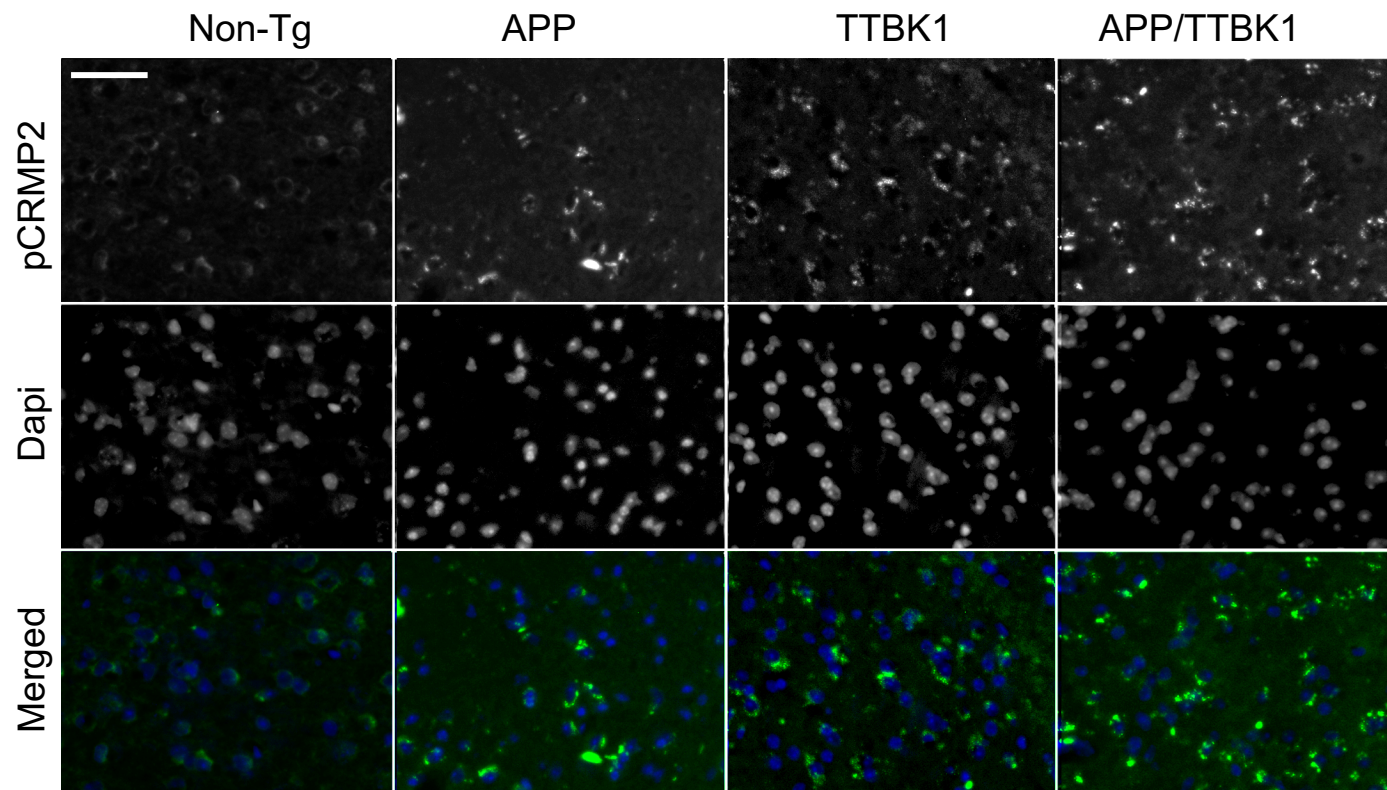
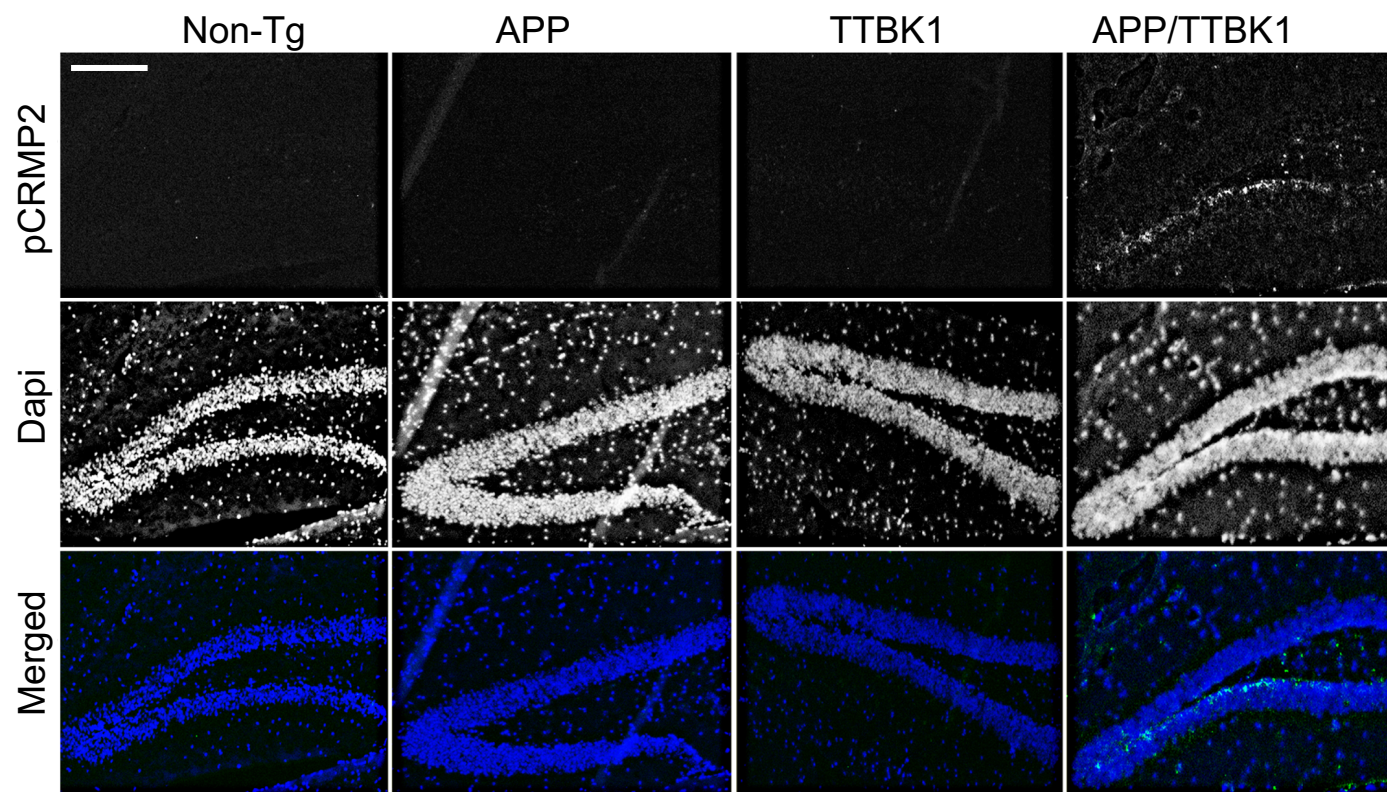


Supplementary Figure 1. Representative conversion of CMYK format and extraction of Y channel (right) for DAB intensity measurement.

A. Entorhinal cortex (Layer II/III)



B. Dentate gyrus



Supplementary Figure 2. Split channel images of pCRMP2 (green in bottom panels of A and B) and Dapi (blue in bottom panels of A and B) as shown in Fig. 2A and C. Scale bars = 50 (A) and 200 μ m (C)