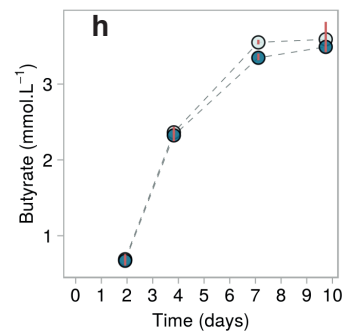
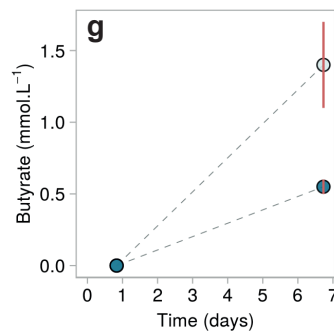
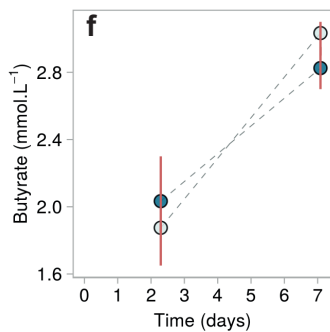
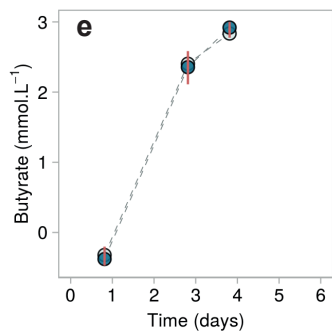
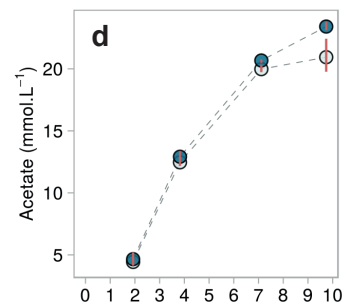
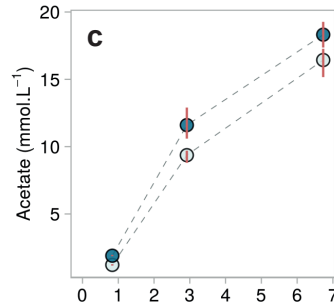
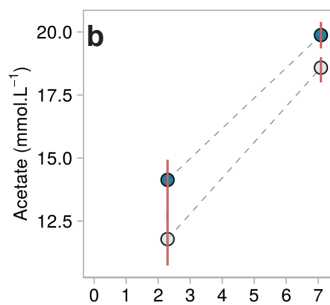
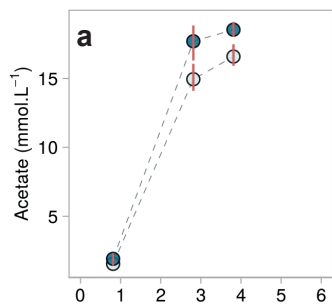
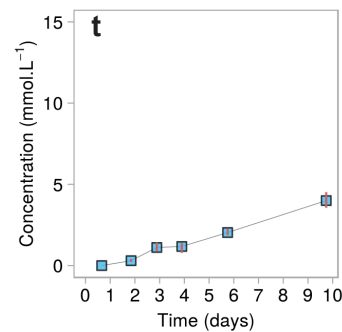
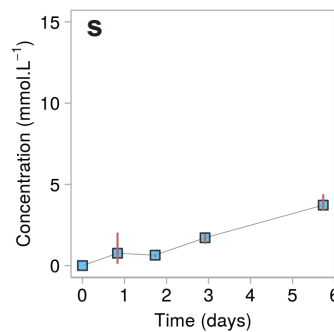
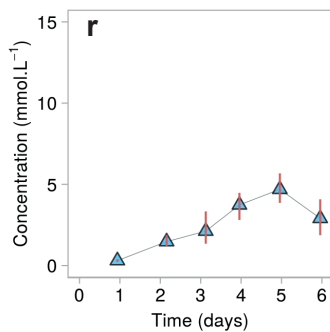
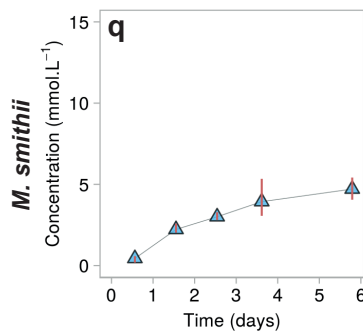
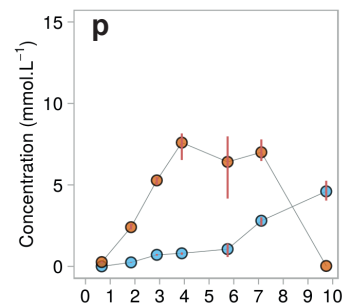
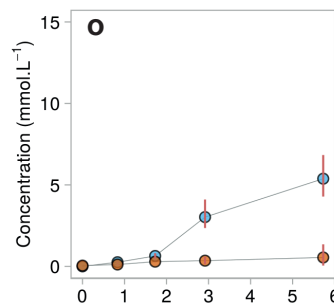
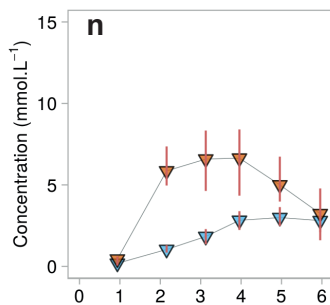
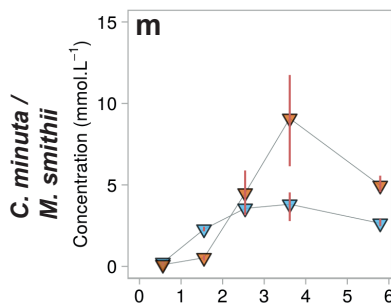
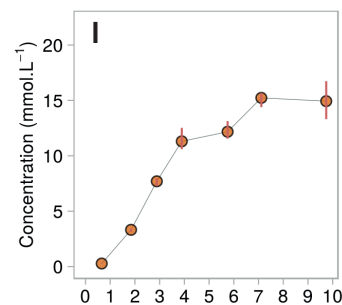
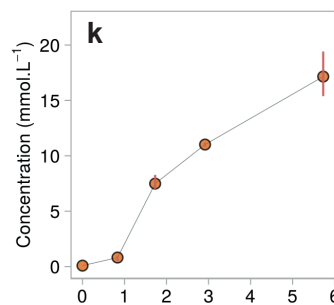
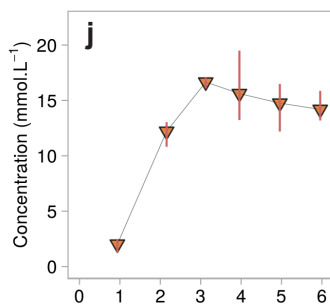
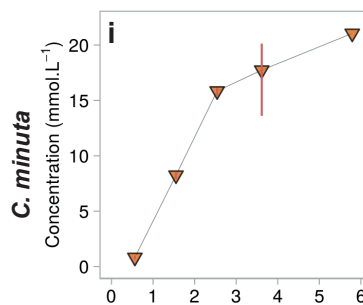


Batch S1: N₂ - 2 barBatch S2: N₂ - 2 barBatch S3: N₂ - atmBatch S4: N₂ - atm

○ *C. minuta* ● *M. smithii* / *C. minuta*



Gas ● H₂ ● CH₄ Conditions ▽ N₂ - 2 bar ○ N₂ - atm △ H₂ - 2 bar □ H₂ - atm