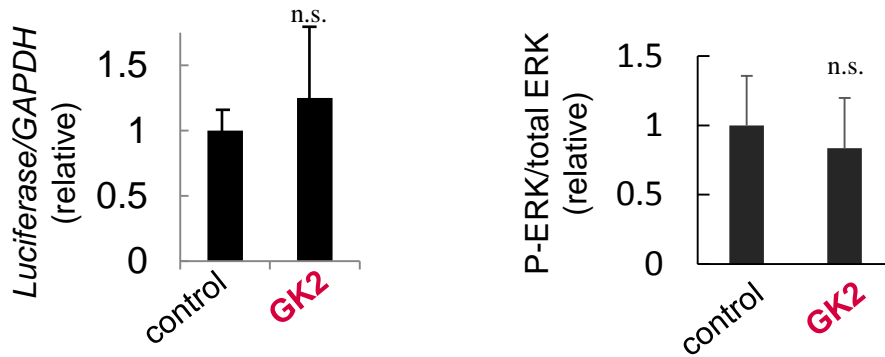


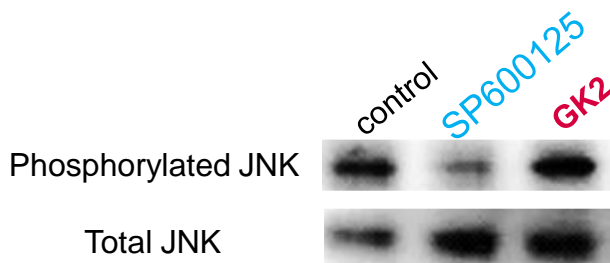
Supplementary Fig. S1



Left, relative expression of luciferase mRNA driven by NF- κ B promoter in HaCaT cells treated with (GK2) or without (control) GK2 for 24 h. Expression of *luciferase* to that of *GAPDH* was analyzed using qRT-PCR. Prior to the analysis, cells have been transfected with NF κ B luciferase reporter vector pGL4.32 (Promega). n =3, n.s.; not significant

Right, relative amount of ERK activation. Cells were treated with (GK2) or without (control) GK2 for 24 hours, and the relative amounts of phosphorylated ERK/total ERK was analyzed by western blotting. n =3, n.s.; not significant

Supplementary Fig. S2



Representative images of total (bottom) and phosphorylated (top) forms of JNK in cells treated with SP600125 or GK2. GK2 did not inactivate JNK.