

## 1 Supplementary Figure I – Pubmed Search Terms

Recent queries in pubmed

Search	Query
#7	Search ((#1) AND #2) AND #3 AND (("2015/01/01"[PDAT] : "2018/11/31"[PDAT]) AND "humans"[MeSH Terms])
#6	Search ((#1) AND #2) AND #3 Filters: Publication date from 2015/01/01 to 2018/11/31; Humans
#5	Search ((#1) AND #2) AND #3 Filters: Publication date from 2015/01/01 to 2018/11/31
#4	Search ((#1) AND #2) AND #3
#3	Search prevent*[Title/Abstract]
#2	Search ((aspirin[Title/Abstract]) OR acetylsalicylic acid[Title/Abstract]) OR Salicylate*[Title/Abstract]
#1	Search (((((((cardiovascular disease*[Title/Abstract]) OR heart disease*[Title/Abstract]) OR myocardial infarction[Title/Abstract]) OR heart arrest[Title/Abstract]) OR myocardial isch*emia[Title/Abstract]) OR heart attack*[Title/Abstract]) OR stroke[Title/Abstract]) OR cerebrovascular disease[Title/Abstract]) OR cerebrovascular disorder*[Title/Abstract]

2

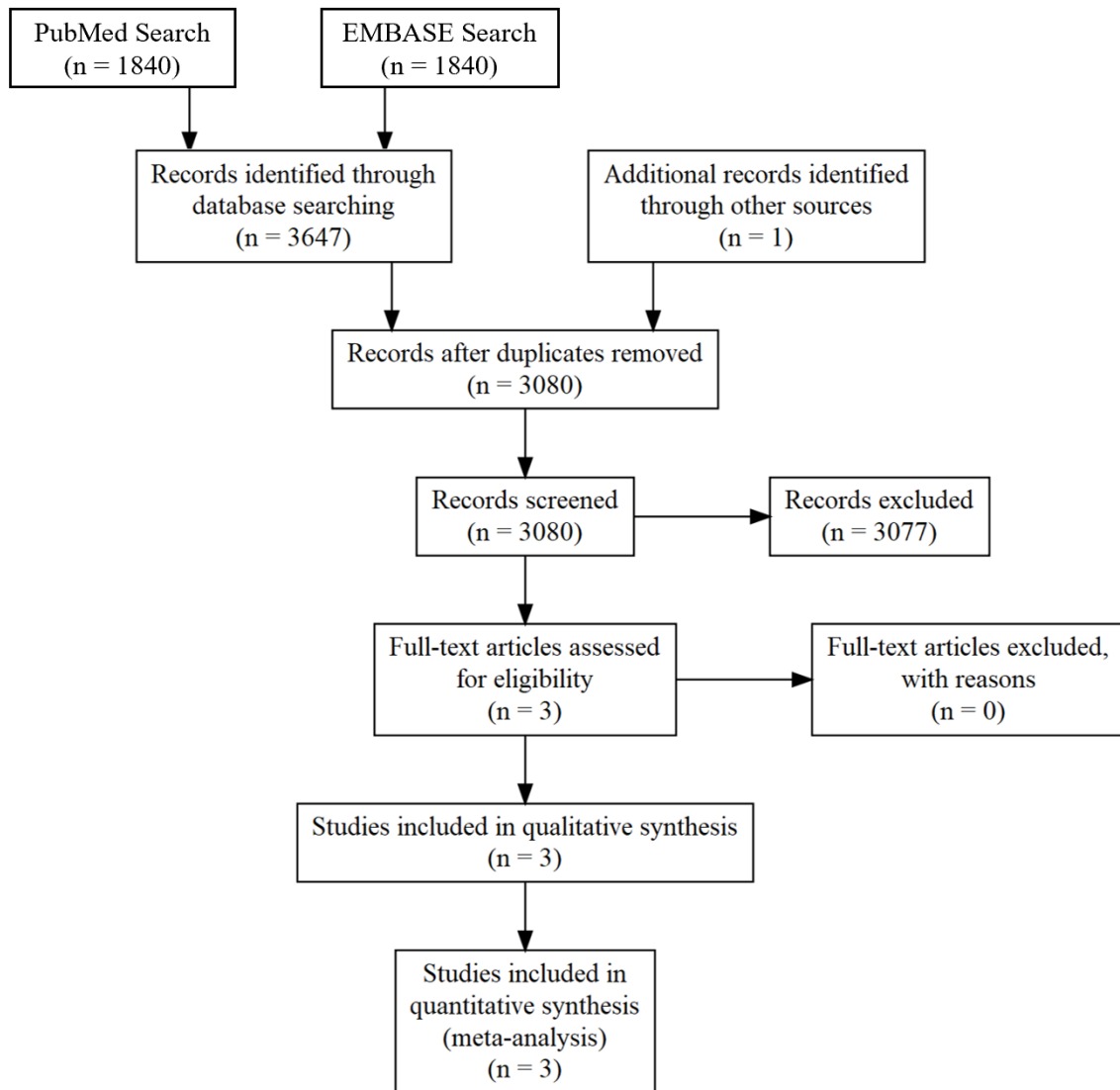
3

## 1 Supplementary Figure II – EMBASE Search Terms

EMBASE Search	Query
#4	Search (#1 AND #2 AND #3) AND [2015-2018]/py
#3	Search 'prevent*':ab,ti
#2	Search 'aspirin':ab,ti OR 'acetylsalicylic acid':ab,ti OR 'Salicylate*':ab,ti Search 'cardiovascular disease*':ab,ti OR 'heart disease*':ab,ti OR 'myocardial infarction':ab,ti OR 'heart arrest':ab,ti OR 'myocardial isch*emia':ab,ti OR 'heart attack*':ab,ti OR 'stroke':ab,ti
#1	OR 'cerebrovascular disease':ab,ti OR 'cerebrovascular disorder*':ab,ti

2

1 Supplementary Figure III – PRISMA flow diagram



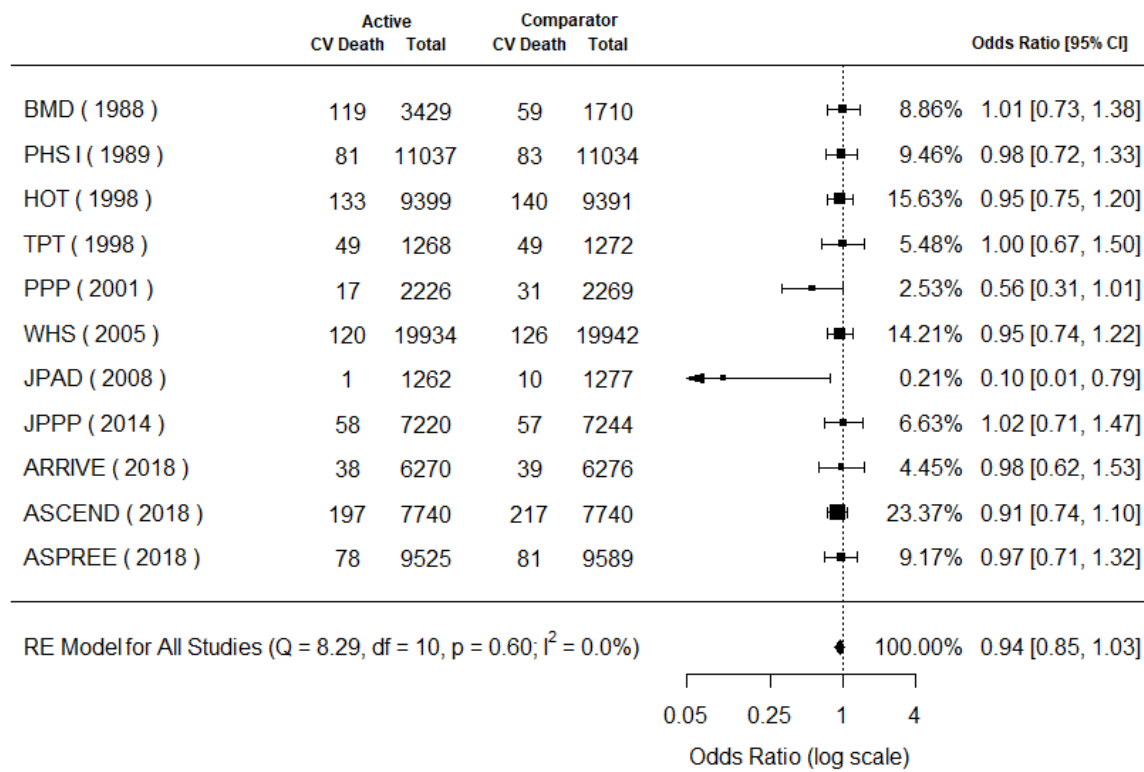
2

3 Supplementary Figure III – A PRISMA flow chart of our updated 2015-2018 search. Full-text articles

4 were excluded due to not aspirin for primary prevention (n=3077).

5

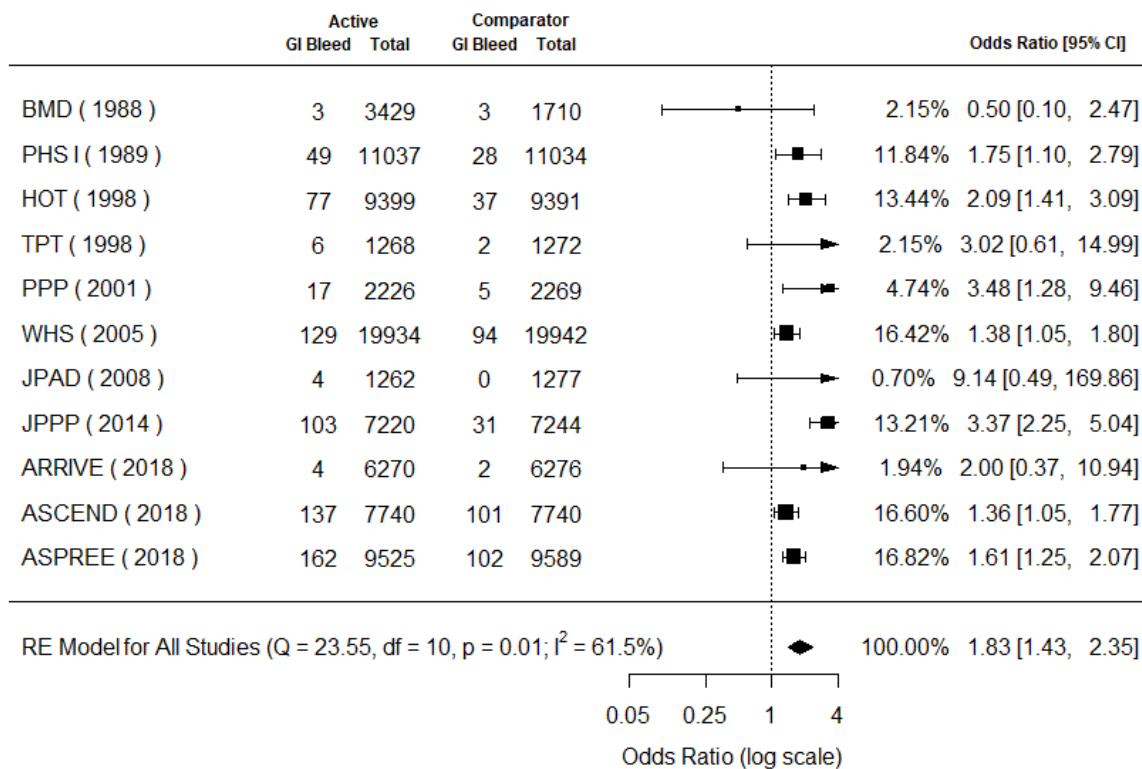
1 Supplementary Figure IV– Aspirin for primary cardiovascular prevention and benefit for  
 2 cardiovascular mortality



3  
 4 Supplementary Figure IV - Forest plot for cardiovascular mortality. Forest plot showing the effect of  
 5 aspirin therapy on cardiovascular mortality. The squares and bars represent the mean values and 95%  
 6 confidence intervals of the effect sizes, while the size of the squares reflects the weight of the studies.  
 7 The combined effects appear as diamonds and the vertical dashed line represents the line of no effect.

8

1 Supplementary Figure V – Aspirin for primary cardiovascular prevention and benefit for  
 2 major gastrointestinal bleeding



3  
 4 Supplementary Figure V - Forest plot for major gastrointestinal bleeding. Forest plot showing the  
 5 effect of aspirin therapy on major gastrointestinal bleeding. The squares and bars represent the mean  
 6 values and 95% confidence intervals of the effect sizes, while the size of the squares reflects the  
 7 weight of the studies. The combined effects appear as diamonds and the vertical dashed line  
 8 represents the line of no effect.