

Supplementary table 1: Patient demographics and characteristics at diagnosis of metastatic disease

	Total (N=2,565)	France (n=504)	Germany (n=504)	Italy (n=500)	Spain (n=504)	UK (n=504)
Age, n (%)						
≤65 years old,	1,426 (55.6)	243 (48.2)	253 (50.2)	270 (54.0)	318 (63.1)	310 (61.5)
>65 years old	1,139 (44.4)	261 (51.8)	251 (49.8)	230 (46.0)	186 (36.9)	194 (38.5)
Gender, n (%)						
Male	1,479 (57.7)	303 (60.1)	293 (58.1)	278 (55.6)	281 (55.8)	295 (58.5)
Female	1,086 (42.3)	201 (39.9)	211 (41.9)	222 (44.4)	223 (44.2)	209 (41.5)
Primary Tumour Location, n (%)						
Head	1,030 (40.2)	196 (38.9)	212 (42.1)	200 (40.0)	195 (38.7)	207 (41.1)
Body	594 (23.2)	114 (22.6)	119 (23.6)	98 (19.6)	115 (22.8)	142 (28.2)
Tail	259 (10.1)	55 (10.9)	46 (9.1)	37 (7.4)	67 (13.3)	51 (10.1)
Head/body	417 (16.3)	88 (17.5)	75 (14.9)	79 (15.8)	90 (17.9)	71 (14.1)
Body/tail	246 (9.6)	46 (9.1)	51 (10.1)	83 (16.6)	35 (6.9)	26 (5.2)
Unknown	19 (0.7)	5 (1.0)	1 (0.2)	3 (0.6)	2 (0.4)	7 (1.4)
ECOG Performance Status, n (%)						
0	366 (14.3)	49 (9.7)	53 (10.5)	132 (26.4)	53 (10.5)	65 (12.9)
1	1,424 (55.5)	234 (46.4)	270 (53.6)	272 (54.4)	283 (56.2)	339 (67.3)
2	691 (26.9)	196 (38.9)	147 (29.2)	90 (18.0)	158 (31.3)	92 (18.3)
3	66 (2.6)	24 (4.8)	26 (5.2)	6 (1.2)	10 (2.0)	0
4	4 (0.2)	1 (0.2)	3 (0.6)	0	0	0
Unknown	14 (0.5)	0	5 (1.0)	0	0	8 (1.6)

Median CA19-9, U/mL	274 (N=298)	203 (n=35)	441 (n=90)	206 (n=74)	267 (n=48)	265 (n=45)
Median albumin, g/L	32.0 (N=216)	32.0 (n=28)	33.0 (n=62)	34.0 (n=30)	31.0 (n=41)	31.0 (n=49)
Median bilirubin, mg/dL	1.08 (N=280)	0.89 (n=30)	1.30 (n=92)	1.00 (n=59)	1.06 (n=43)	0.89 (n=49)

ECOG, Eastern Cooperative Oncology Group

Supplementary table 2: Geographic variation in first-line treatment regimen choices

First-line treatment/% patients	Total (N=2,565)	France (n=504)	Germany (n=504)	Italy (n=500)	Spain (n=504)	UK (n=504)
5-FU-based	43.4	55.2	42.7	35.0	38.5	45.4
FOLFIRINOX	35.6	47.4	33.5	27.2	29.0	40.1
Full dose FOLFIRINOX	28.1	40.9	29.6	19.0	22.6	27.8
Modified FOLFIRINOX	7.4	6.5	4.0	8.2	6.3	12.3
Other 5-FU-based	7.9	7.7	9.1	7.8	9.5	5.4
5-FU+oxaliplatin	5.0	4.6	6.5	5.0	5.6	3.2
5-FU+irinotecan	0.8	1.4	0.8	0.4	1.0	0.2
5-FU monotherapy	2.1	1.8	1.8	2.4	3.0	2.0
Gemcitabine-based	55.4	44.8	57.3	61.8	59.5	53.8
Gemcitabine+nab-paclitaxel	25.7	10.9	31.0	36.4	32.7	17.9
Gemcitabine monotherapy	20.5	26.8	15.9	19.8	17.9	23.4
Other gemcitabine combinations	9.2	7.1	10.5	5.6	8.9	12.5
Gemcitabine+erlotinib	1.8	0.0	6.2	0.0	2.8	0.2
Gemcitabine+capecitabine	3.2	0.0	1.2	0.6	3.8	9.3
Gemcitabine+oxaliplatin	3.1	6.7	2.0	4.4	2.2	0.4
Gemcitabine+cisplatin	1.0	0.4	1.2	0.6	0.2	2.6
Other	1.2	0.0	0.0	3.2	2.0	0.8

5-FU, 5-fluorouracil; FOLFIRINOX, folinic acid, fluorouracil, irinotecan and oxaliplatin.

Supplementary table 3: Patients demographics and characteristics in first-line gemcitabine+nab-paclitaxel or FOLFIRINOX treatment (France, Germany, Italy, Spain and the UK patient populations)

Patients (%)	First-line gemcitabine+nab-paclitaxel	First-line FOLFIRINOX				
		All	mFOLFIRINOX	fFOLFIRINOX		
				All	Never modified	Modified in cycle ≥ 2
France	n=55	n=239	n=33	n=206	n=169	n=37
With dose adjustment	9.1	16.7	9.1	18.0	0.0	100.0
>65 years old	47.3	33.1	27.3	34.0	33.1	37.8
Female	45.5	36.0	36.4	35.9	33.1	48.6
ECOG PS 0–1	54.5	74.5	66.7	75.7	76.3	73.0
Received second-line treatment	50.9	88.3	90.9	87.9	89.9	78.4
Median OS/PFS (months)	10/6	13/9	NR*	13/9	13/9	NR*
Germany	n=156	n=169	n=16	n=153	n=129	n=24
With dose adjustment	9.0	14.2	0.0	15.7	0.0	100.0
>65 years old	60.3	19.5	37.5	17.6	17.1	20.8
Female	43.6	30.8	50.0	28.8	27.9	33.3
ECOG PS 0–1	67.3	92.3	100.0	91.5	91.5	91.7
Received second-line treatment	66.7	80.5	75.0	81.0	80.6	83.3
Median OS/PFS (months)	12/7	20/22	NR*	20/22	20/22	NR*
Italy	n=182	n=136	n=35	n=101	n=64	n=37
With dose adjustment	24.7	27.9	2.9	36.6	0.0	100
>65 years old	43.4	20.6	11.4	23.8	18.8	32.4

Patients (%)	First-line gemcitabine+ nab-paclitaxel	First-line FOLFIRINOX				
		All	mFOLFIRINOX	fFOLFIRINOX		
				All	Never modified	Modified in cycle ≥2
Female	45.1	37.5	37.1	37.6	37.5	37.8
ECOG PS 0–1	86.3	95.6	97.1	95.0	96.9	91.9
Received second-line treatment	58.2	68.4	74.3	66.3	62.5	73.0
Median OS/PFS (months)	12/7	18/10	NR*	18/10	17/9	NR*
Spain	n=165	n=146	n=29	n=117	n=82	n=35
With dose adjustment	25.5	26.0	10.3	30.0	0.0	100.0
>65 years old	37.0	19.2	10.3	21.4	23.2	17.1
Female	41.2	39.7	48.3	37.6	36.6	40.0
ECOG PS 0–1	73.3	87.0	96.6	84.6	81.7	91.4
Received second-line treatment	80.6	75.3	72.4	76.1	76.8	74.3
Median OS/PFS (months)	12/7	17/16	NR*	16/11	13/10	NR*
UK	n=90	n=202	n=48	n=154	n=103	n=51
With dose adjustment	26.7	26.2	4.2	33.1	0.0	100.0
>65 years old	34.4	23.3	14.6	26.0	23.3	31.4
Female	40.0	38.6	43.8	37.0	33.0	45.1
ECOG PS 0–1	90.0	94.9	93.6	95.3	94.9	96.1
Received second-line treatment	72.2	74.3	77.1	73.4	72.8	74.5
Median OS/PFS (months)	14/7	15/8	15/8	14/8	15/10	NR*

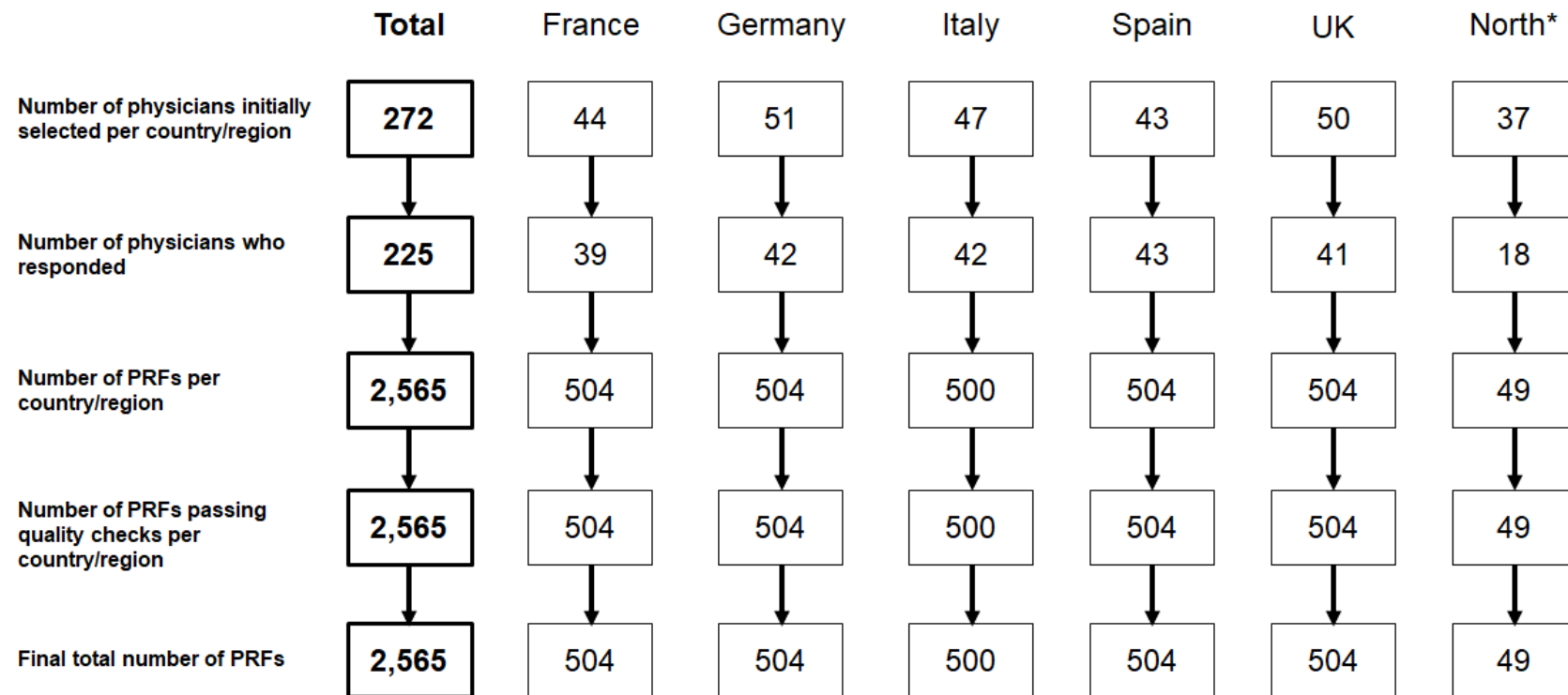
*OS/PFS not calculated due to small sample size

ECOG, Eastern Cooperative Oncology Group; FOLFIRINOX, folinic acid, fluorouracil, irinotecan and oxaliplatin; NA, not applicable; NR, not reported; OS, overall survival; PFS, progression-free survival; PS, performance status.

Supplementary table 4: Reimbursement status of treatments in EU countries involved in this observational study

	Treatment reimbursed				
	France	Germany	Italy	Spain	UK
Gemcitabine	Yes	Yes	Yes	Yes	Yes
5-fluorouracil	Yes	Yes	Yes	Yes	Yes
Irinotecan	Yes	Yes	Yes	Yes	Yes
Oxaliplatin	Yes	Yes	Yes	Yes	Yes
Capecitabine	Yes	Yes	Yes	Yes	Yes
Cisplatin	Yes	Yes	Yes	Yes	Yes
nab-paclitaxel	Yes	Yes	Yes	Yes	No

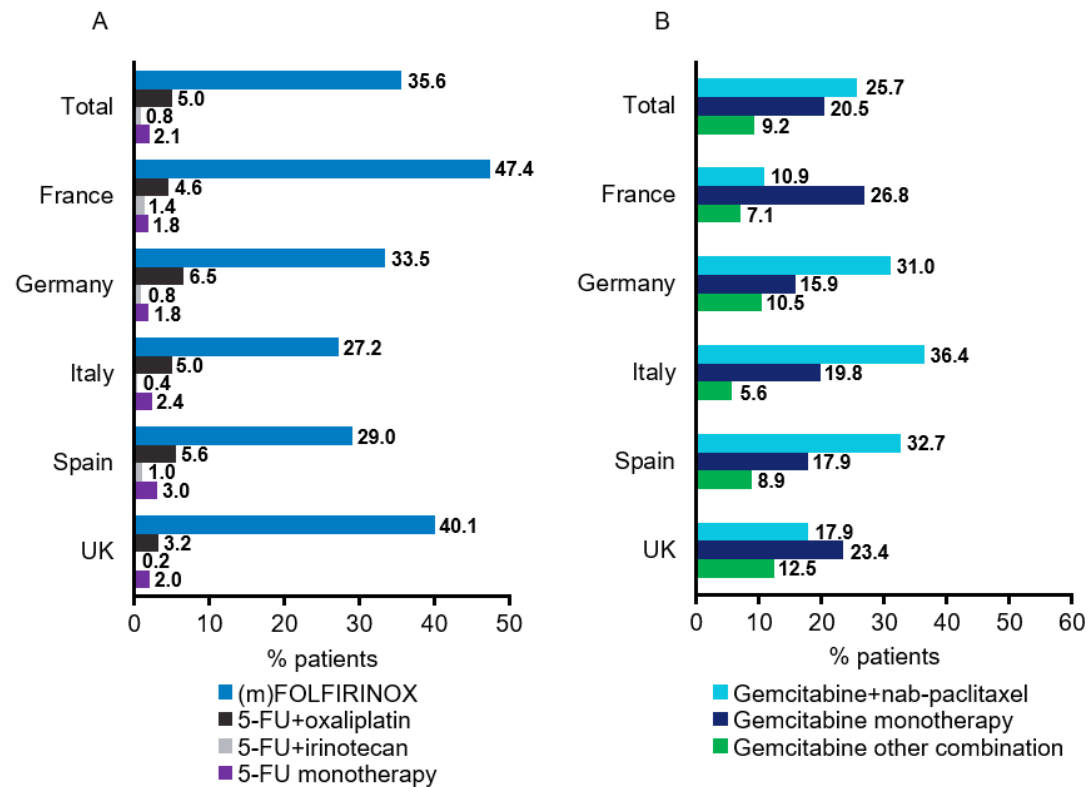
Adapted from Cherny *et al.* (2016) (11).

Supplementary figure 1: Flow chart describing physician recruitment and patient record collection

*North region includes the Netherlands, Denmark, Norway and Sweden

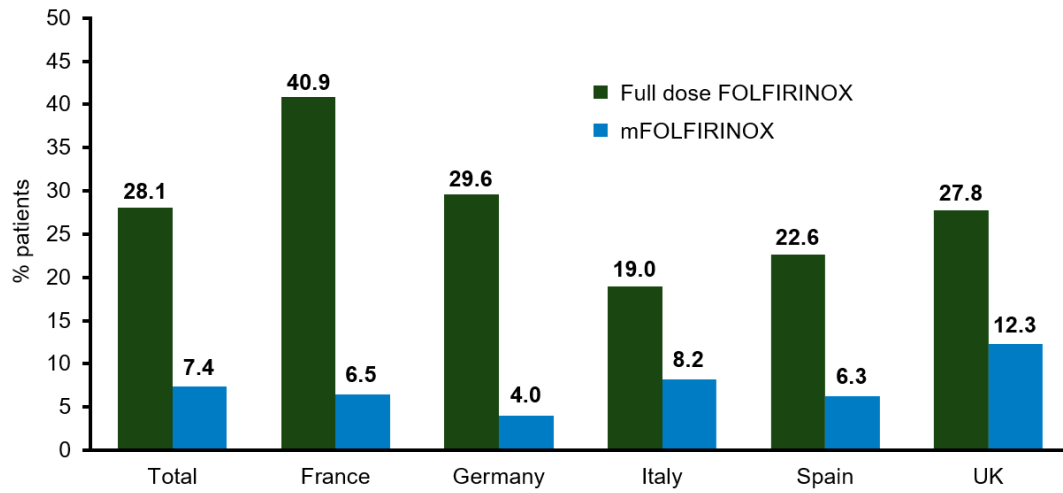
PRF, patient record form.

Supplementary figure 2: Use of A) 5-fluorouracil-based treatments and B) gemcitabine-based treatments in the first-line setting



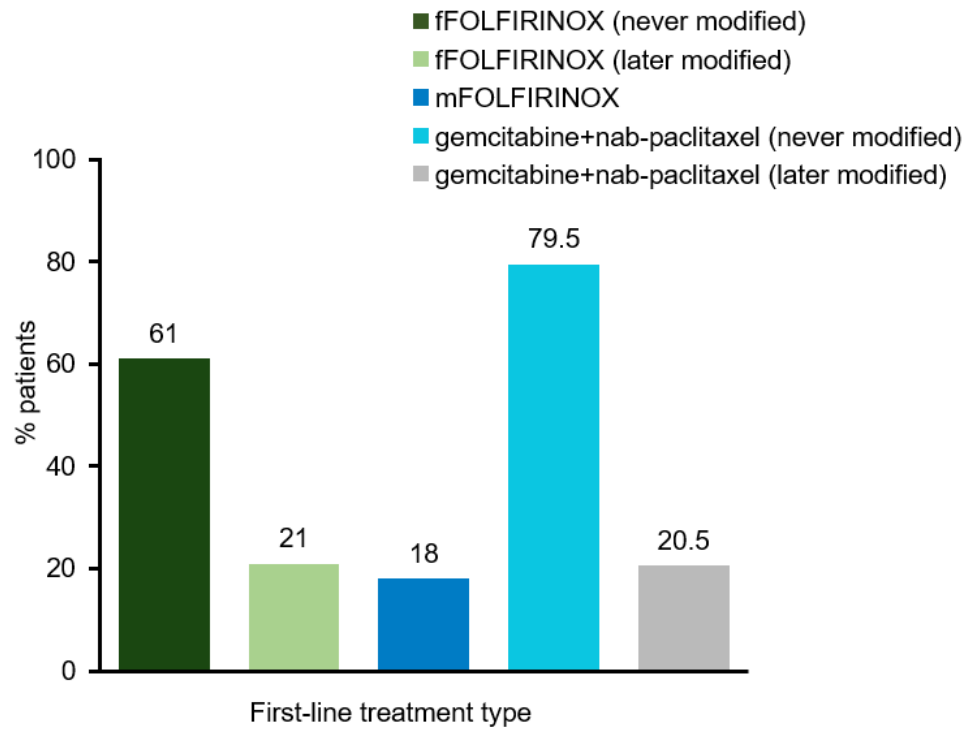
*(m)FOLFIRINOX includes full-dose and modified FOLFIRINOX.

5-FU, 5-fluorouracil; FOLFIRINOX, folinic acid, fluorouracil, irinotecan and oxaliplatin.

Supplementary figure 3: Use of modified and full-dose FOLFIRINOX in first line treatment

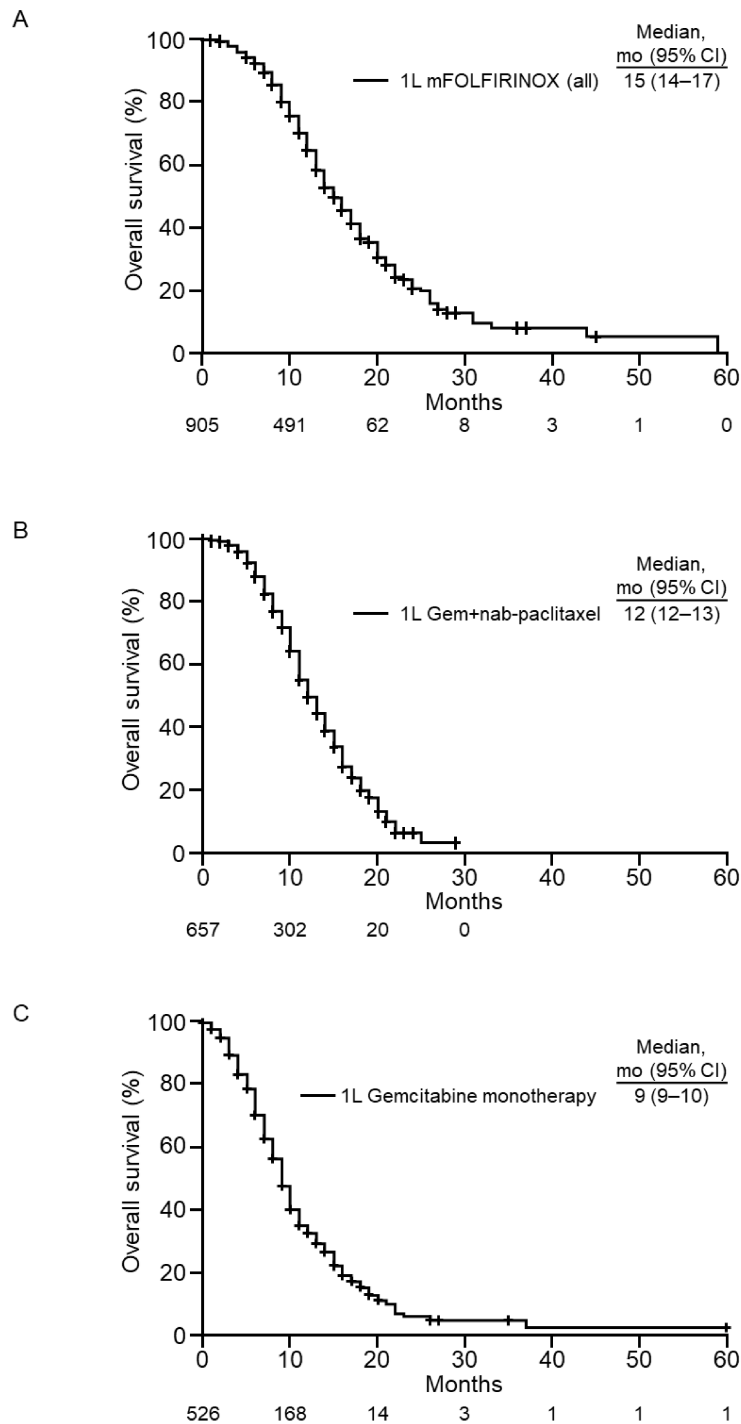
FOLFIRINOX, folinic acid, fluorouracil, irinotecan and oxaliplatin; m, modified.

Supplementary figure 4: First-line FOLFIRINOX and gemcitabine+nab-paclitaxel dose modifications



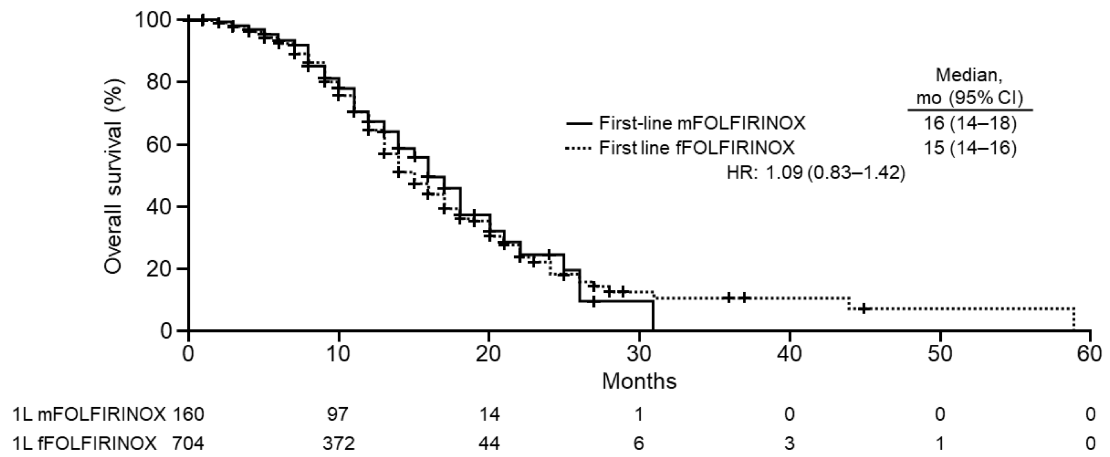
fFOLFIRINOX, full-dose folinic acid, fluorouracil, irinotecan and oxaliplatin; mFOLFIRINOX, modified folinic acid, fluorouracil, irinotecan and oxaliplatin.

Supplementary figure 5: Overall survival based on first-line A) mFOLFIRINOX treatment (modified at any time point), B) gemcitabine+nab-paclitaxel treatment or C) gemcitabine monotherapy



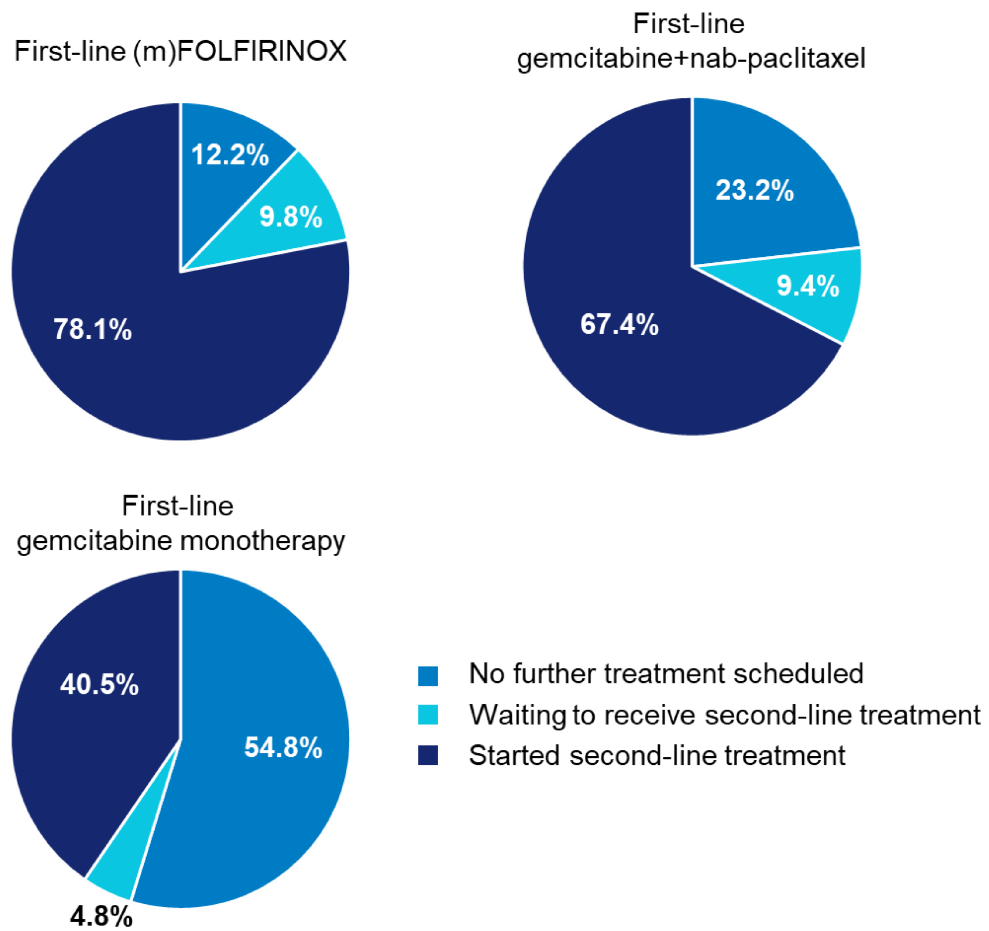
CI, confidence interval; mFOLFIRINOX, modified folinic acid, fluorouracil, irinotecan and oxaliplatin.

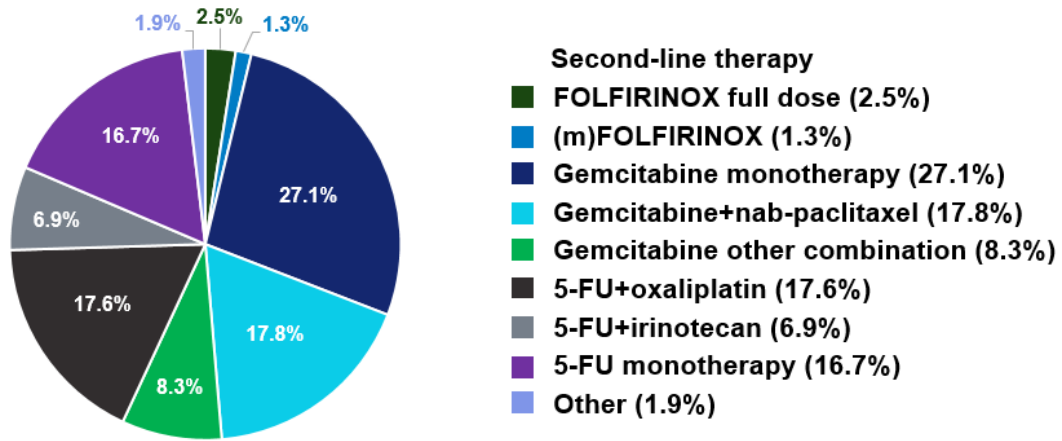
Supplementary figure 6: Overall survival based on first-line FOLFIRINOX dose at start of treatment



CI, confidence interval; fFOLFIRINOX, full-dose folinic acid, fluorouracil, irinotecan and oxaliplatin;

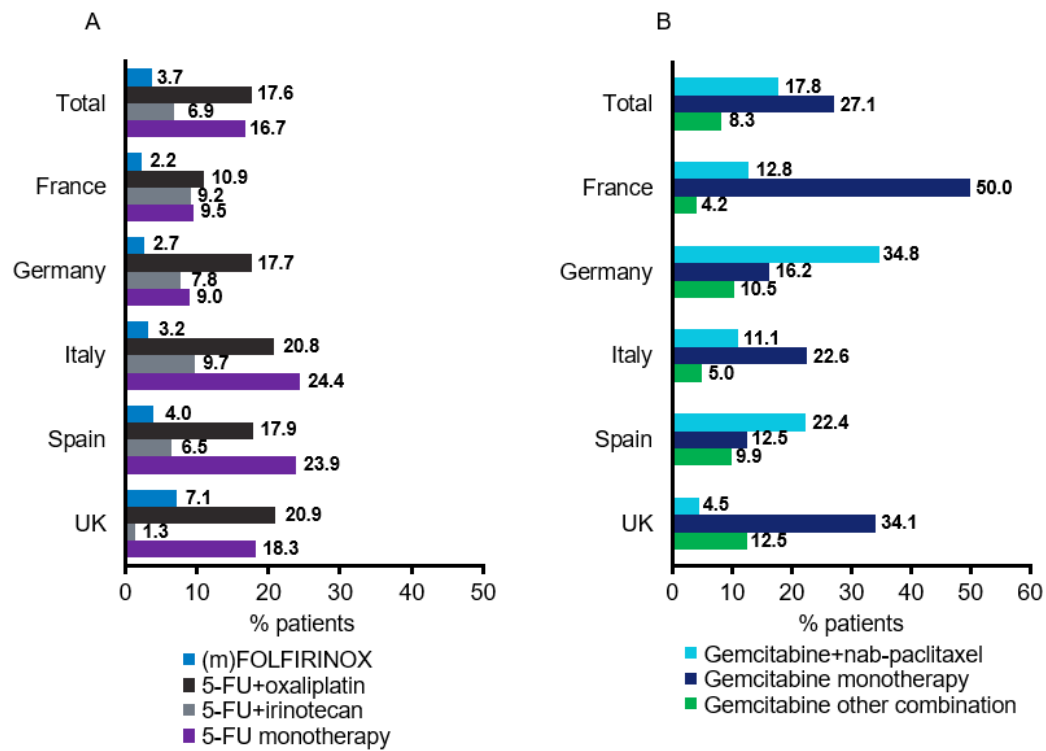
HR, hazard ratio; mFOLFIRINOX, modified folinic acid, fluorouracil, irinotecan and oxaliplatin.

Supplementary figure 7: Second-line treatment patterns by first-line treatment (n=1,666)

Supplementary figure 8: Overall breakdown of second-line treatment choices

5-FU, 5-fluorouracil; FOLFIRINOX, folinic acid, fluorouracil, irinotecan and oxaliplatin.

Supplementary figure 9: Use of A) 5-fluorouracil-based treatments and B) gemcitabine-based treatments in the second-line setting



*(m)FOLFIRINOX includes full-dose and modified FOLFIRINOX.

5-FU, 5-fluorouracil; FOLFIRINOX, folinic acid, fluorouracil, irinotecan and oxaliplatin.