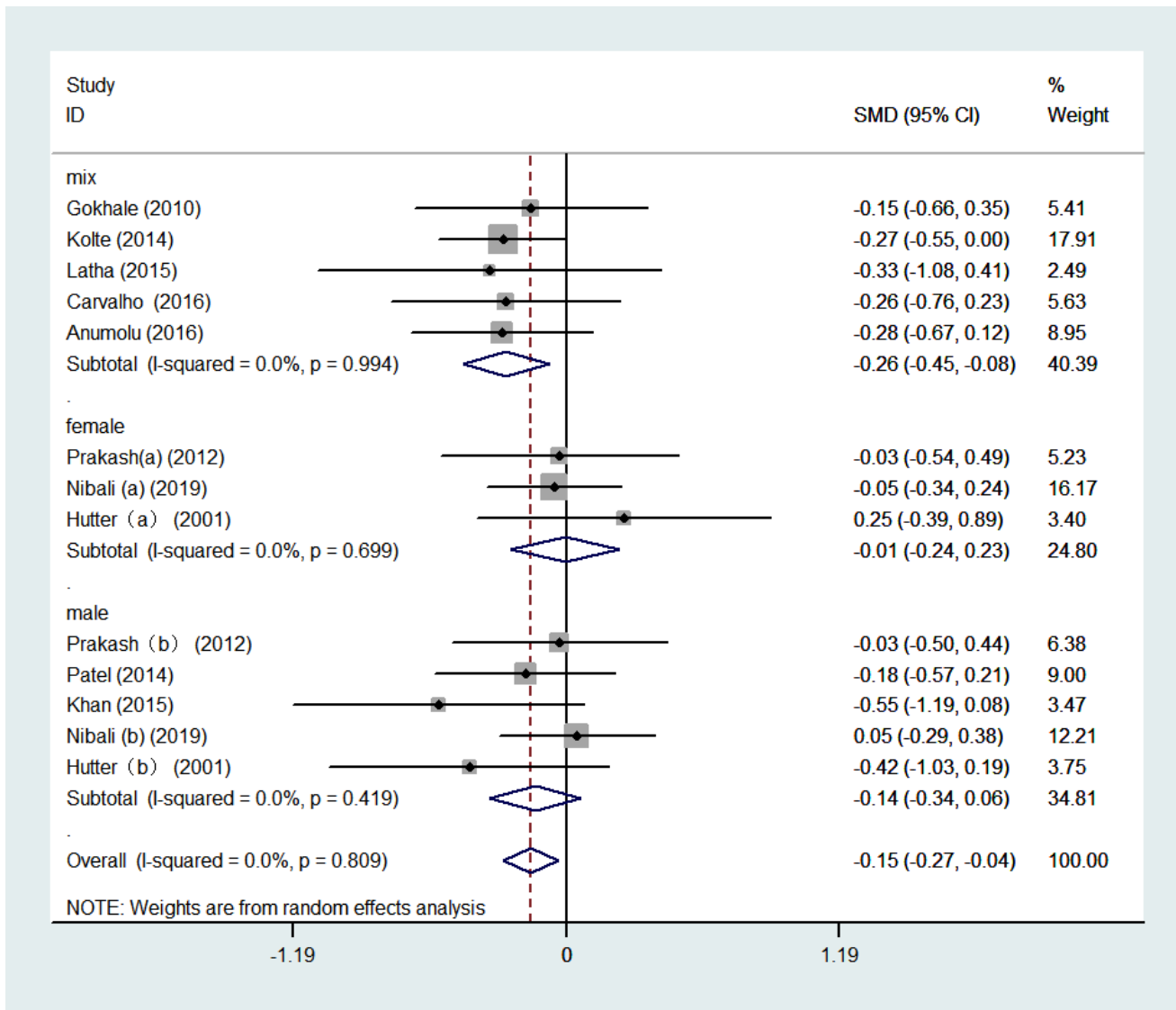
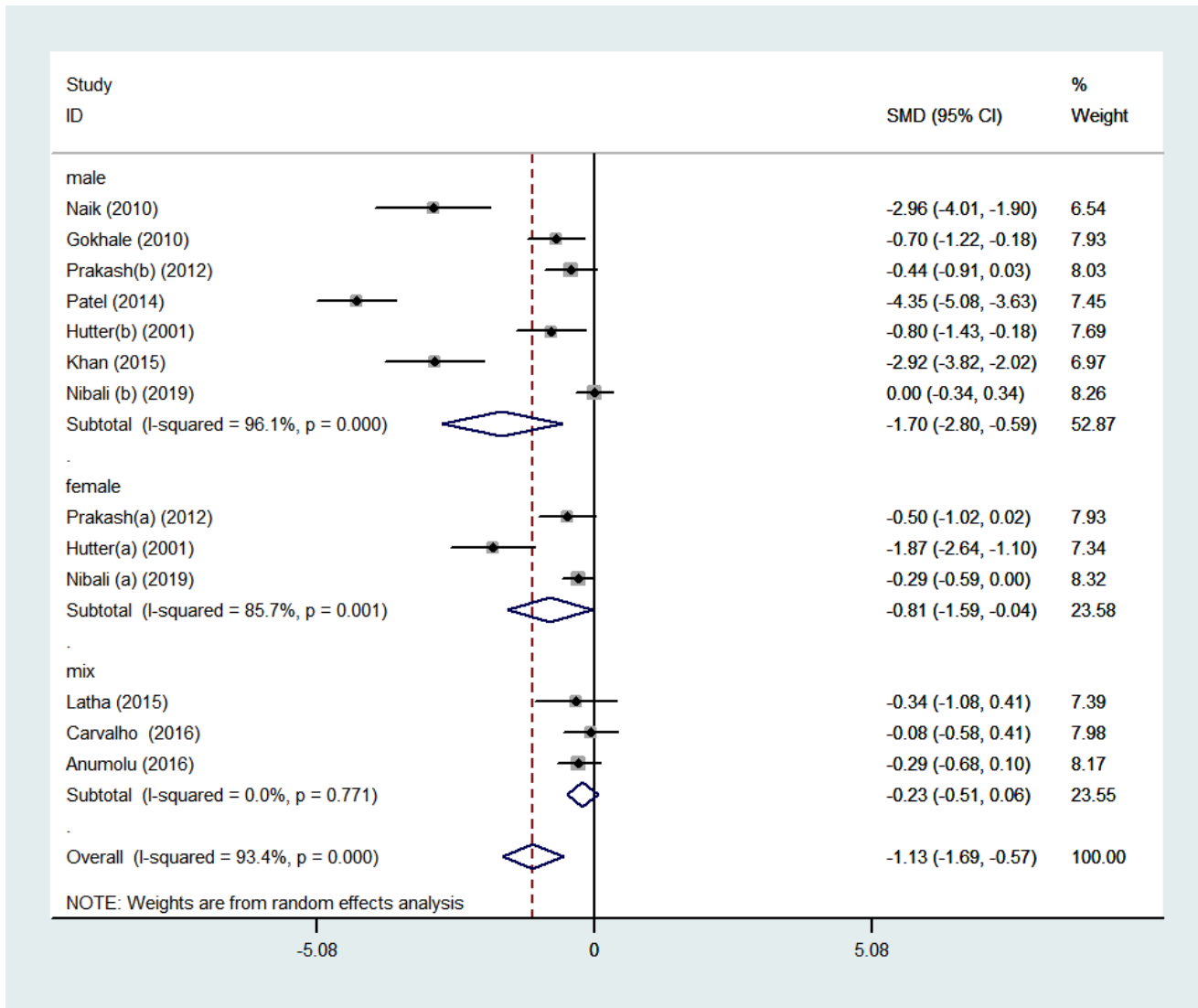


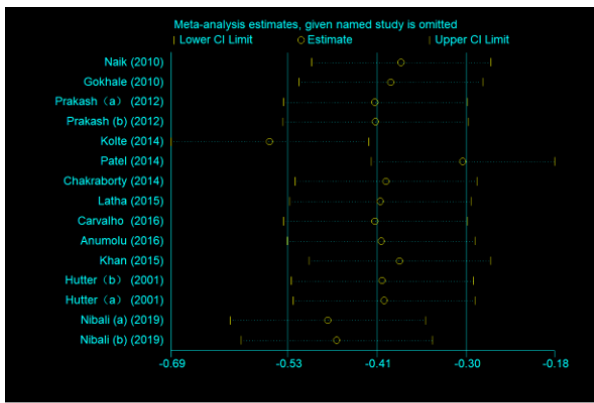
## Supplementary Material



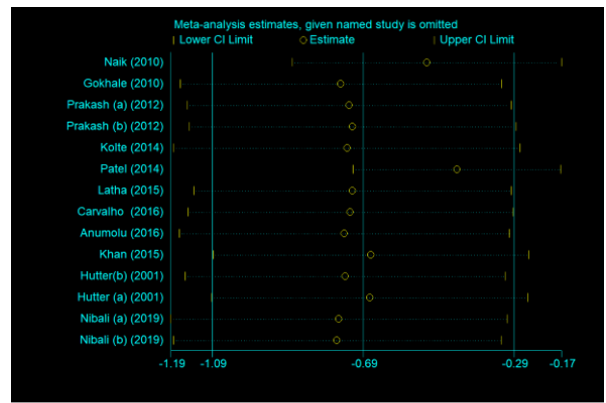
**Supplementary Figure 1.** Forest plot of the studies regarding the effect of periodontitis on MCH based on gender.



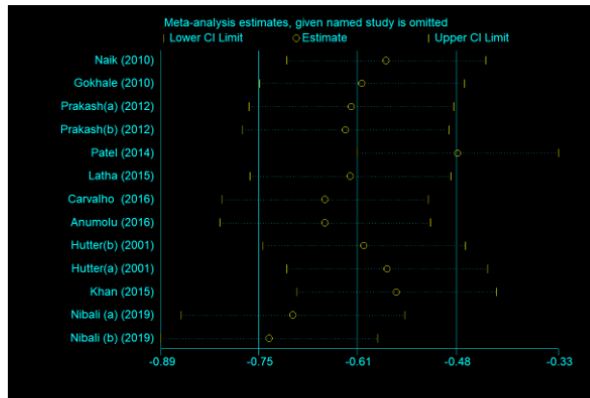
**Supplementary Figure 2.** Forest plot of the studies regarding the effect of periodontitis on HCT based on gender.



(a)

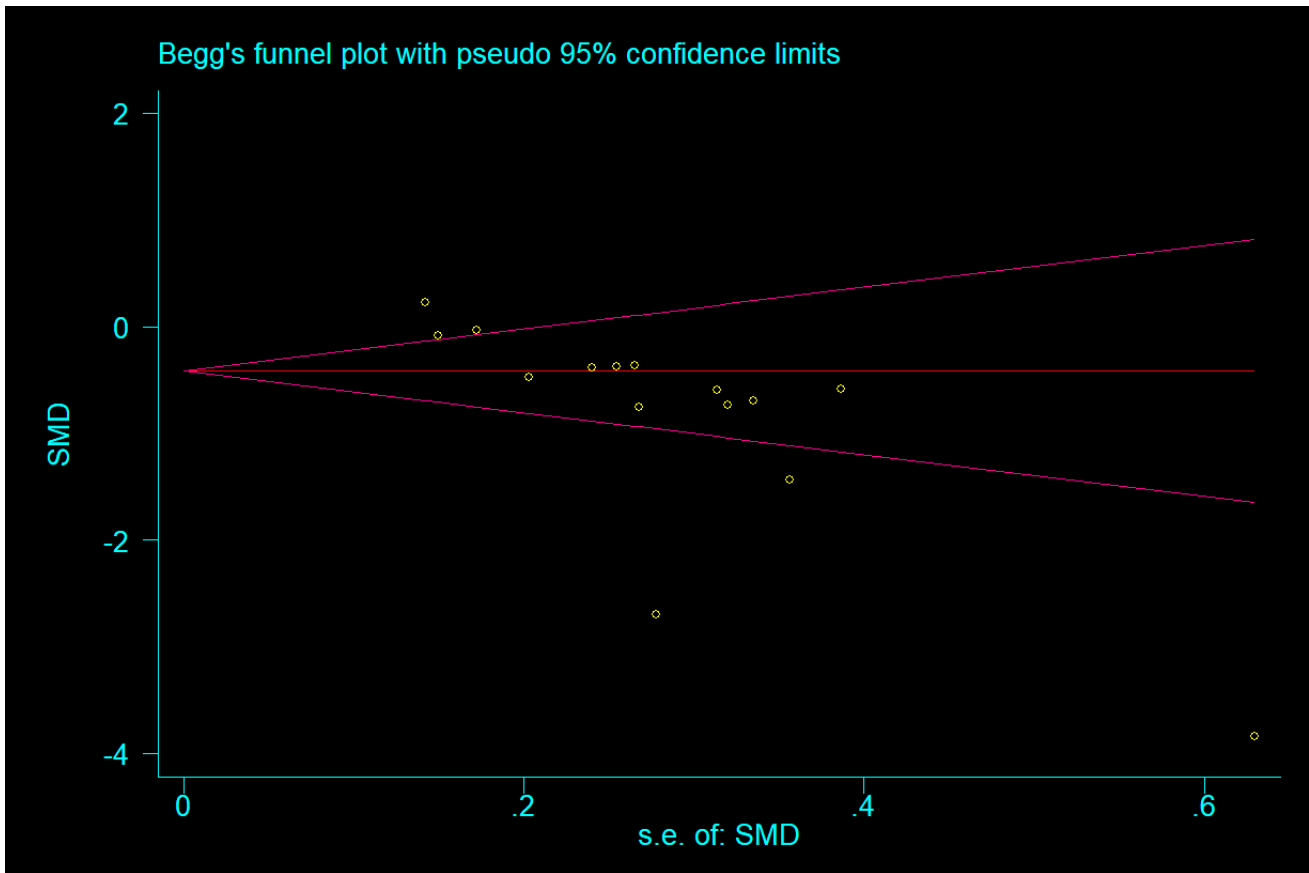


(b)

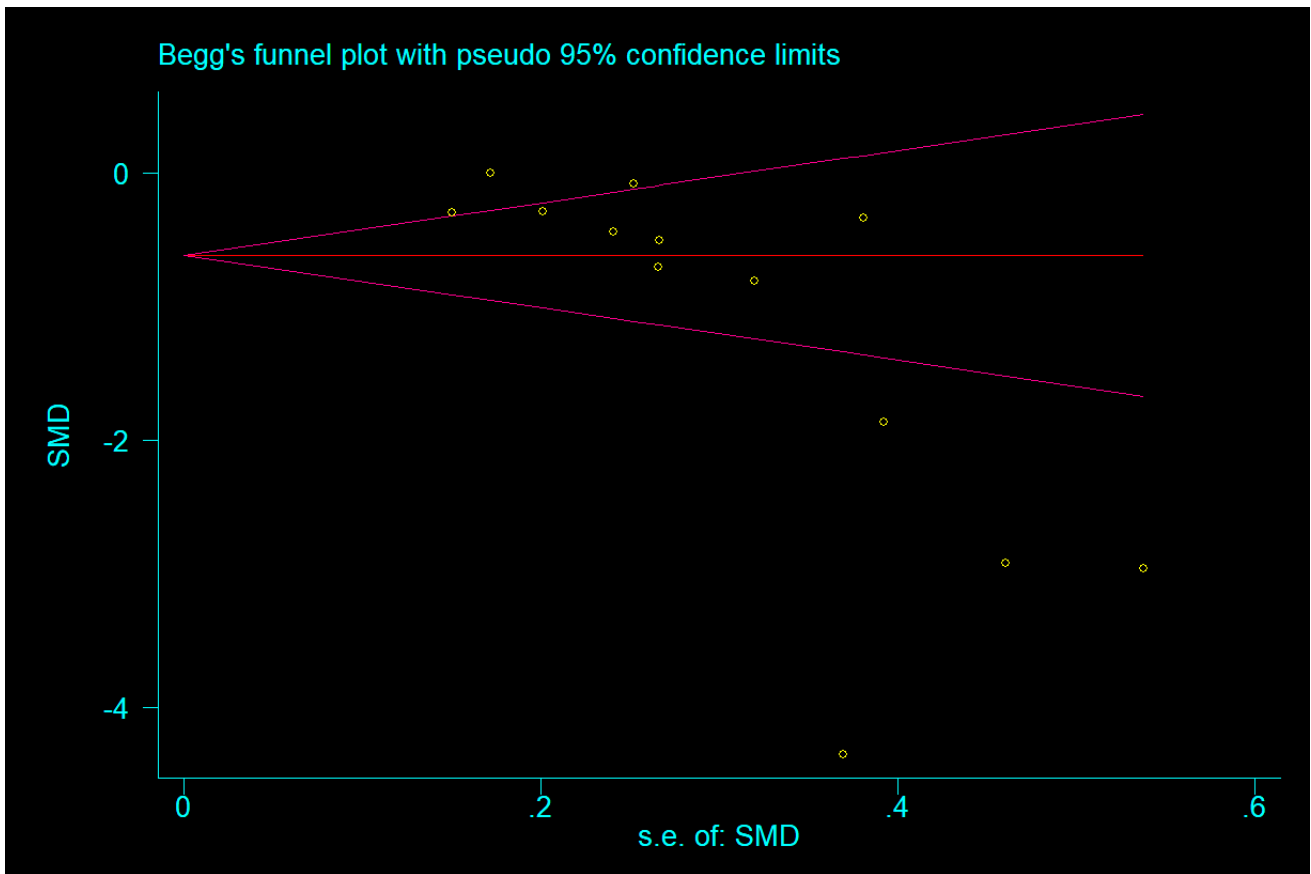


(c)

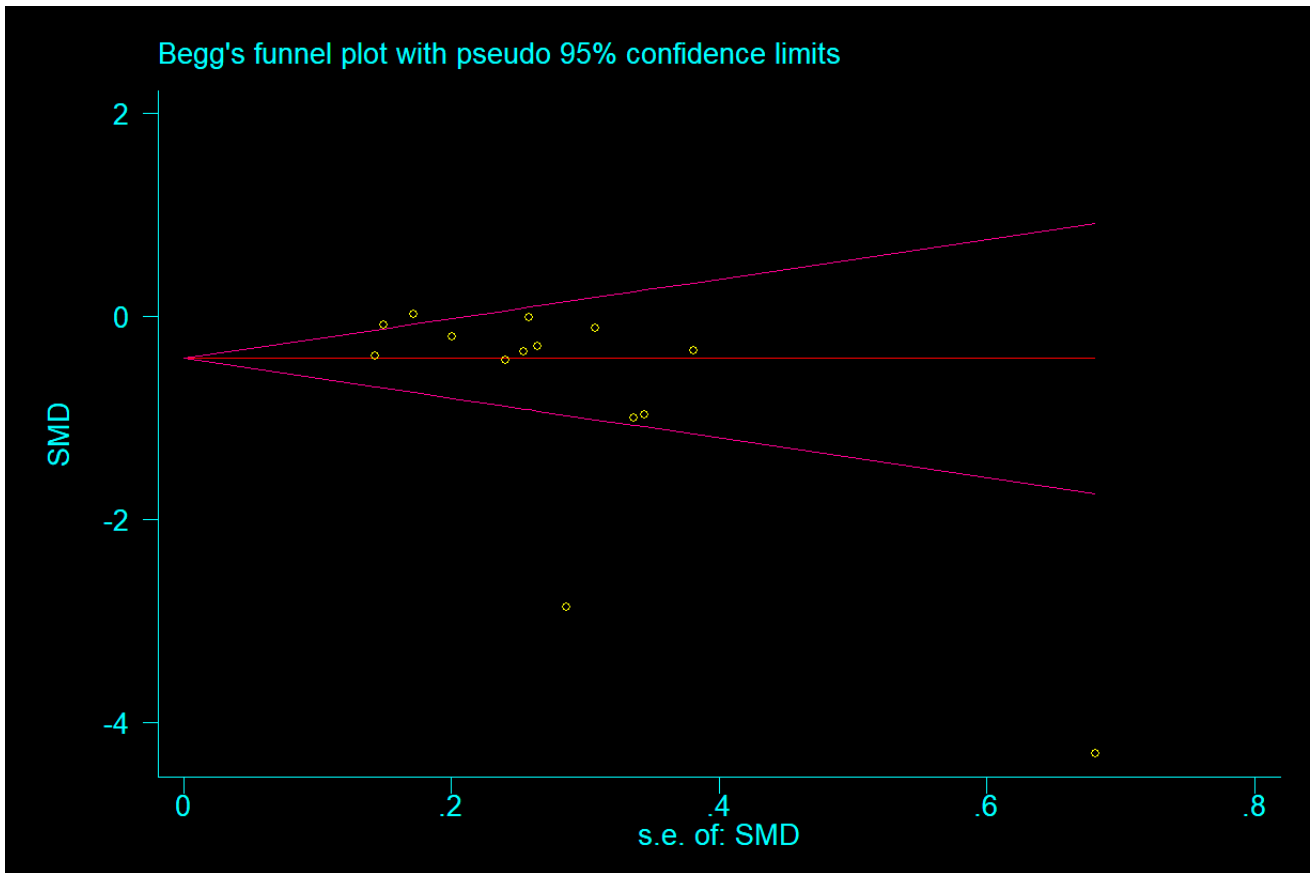
Supplementary Figure 3. Sensitivity analysis of meta-analysis.



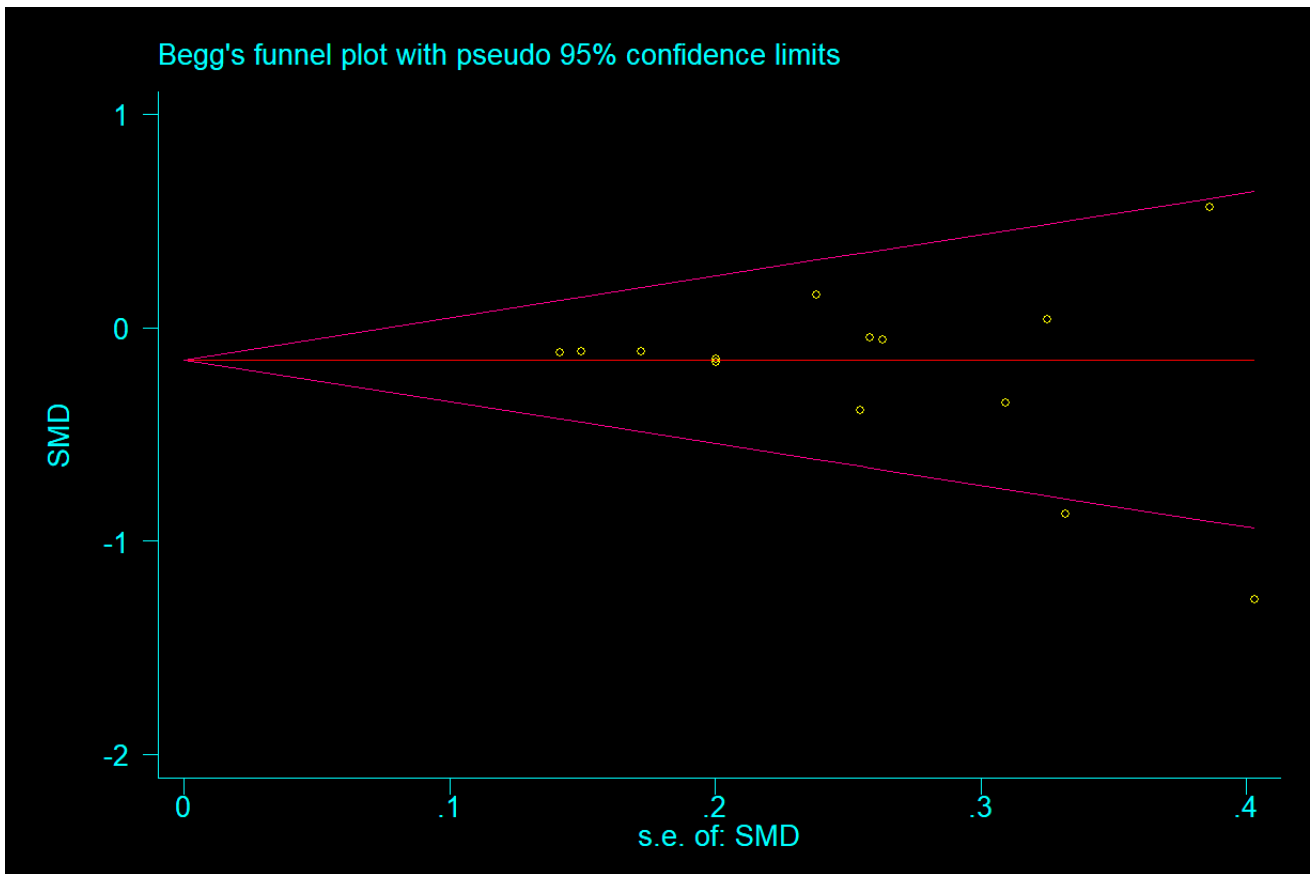
**Supplementary Figure 4.** Publication bias of the studies regarding the effect of periodontitis on Hb level.



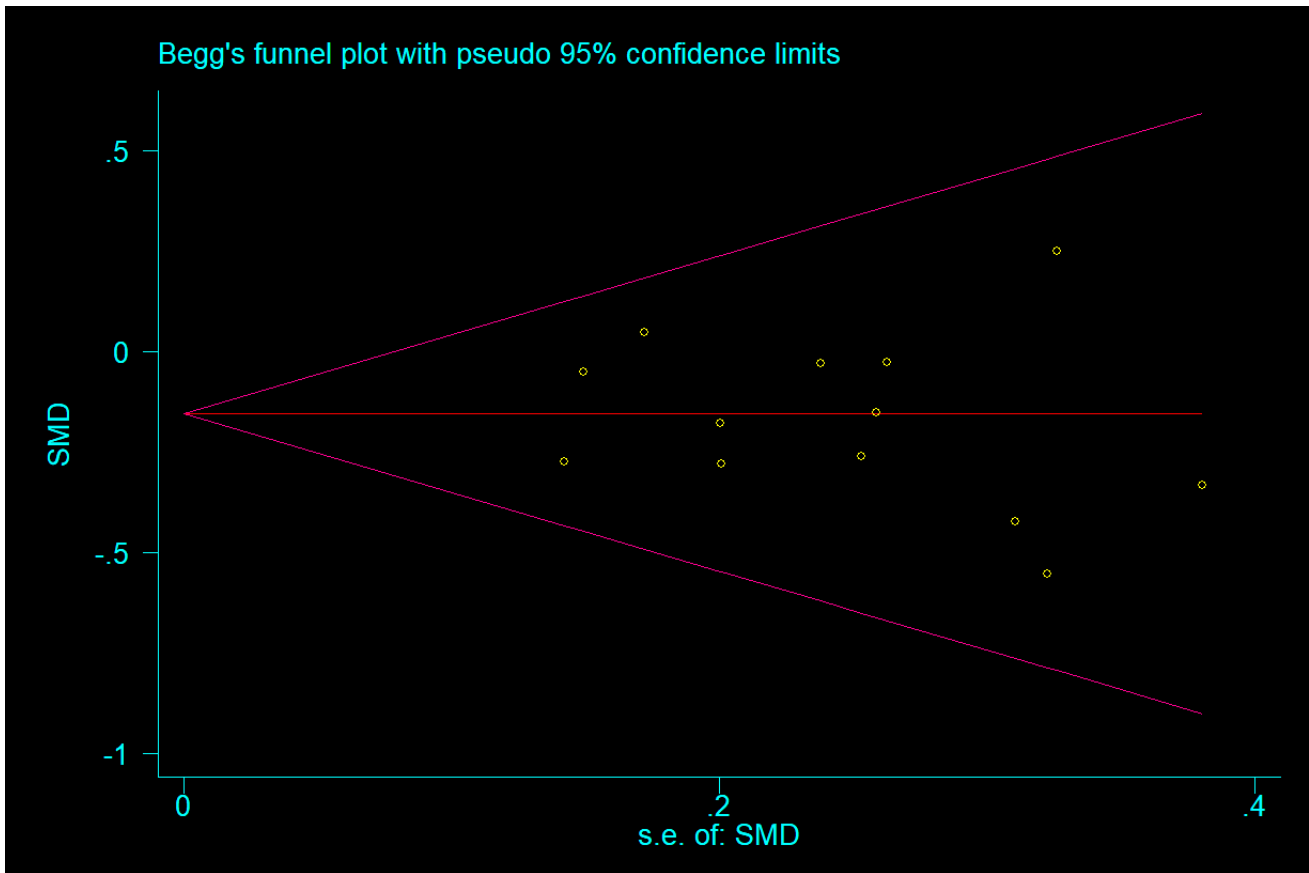
**Supplementary Figure 5.** Publication bias of the studies regarding the effect of periodontitis on HCT level.



**Supplementary Figure 6.** Publication bias of the studies regarding the effect of periodontitis on RBC level.

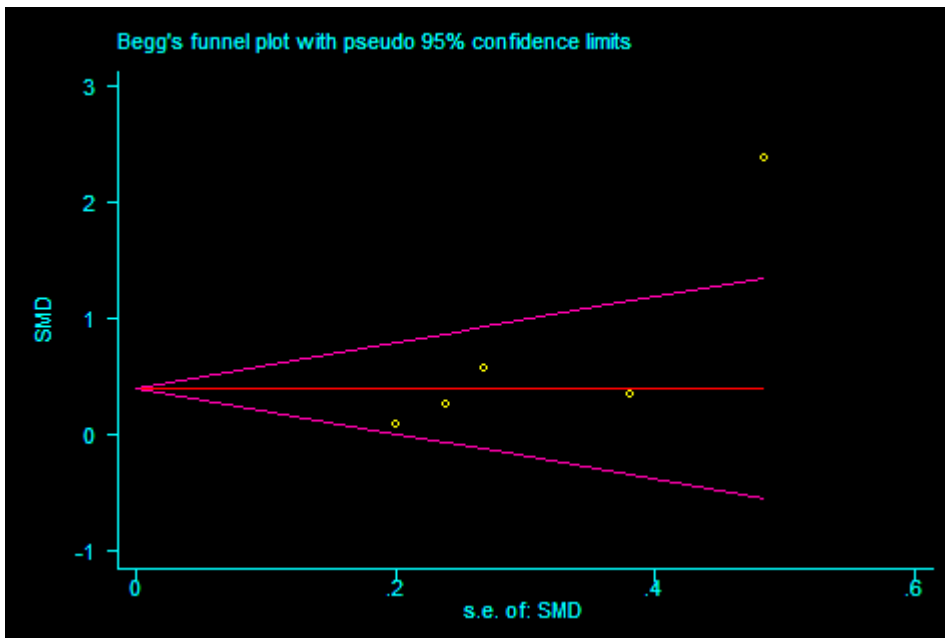


**Supplementary Figure 7.** Publication bias of the studies regarding the effect of periodontitis on MCV level.



**Supplementary Figure 8.** Publication bias of the studies regarding the effect of periodontitis on MCH level.





**Supplementary Figure 9.** Publication bias of the studies regarding the effect of periodontitis on ESR level.

**Supplementary Table 1.** Subgroup analysis of the association between periodontitis and anemia based on Hb level.

<b>Subgroup</b>	<b>Number of subjects</b>	<b>SMD (95%CI)</b>	<b>I<sup>2</sup></b>	<b>P value</b>
<b>Gender</b>				
Male	7	-1.14(-2.05, -0.24)	94.8%	0.01
Female	3	-0.37(-0.83, 0.09)	<b>63.7%</b>	<b>0.11</b>
Mix	4	-0.33 (-0.53, -0.13)	0.00%	<0.01
<b>Severity of periodontitis</b>				
CAL $\geq$ 5 mm	5	-0.85(-1.57, -0.13)	91.0%	0.02
BL $\geq$ 50%	3	-0.33(-0.89, 0.22)	<b>62.1%</b>	<b>0.24</b>
CAL $\geq$ 1 mm	6	-0.75(-1.45, -0.05)	93.1%	0.04
<b>Sample</b>				
<50	5	-1.20(-2.16, -0.24)	88.1%	0.02
$\geq$ 50	9	-0.49(-0.93, -0.05)	90.9%	0.03
Total	11	-0.69(-1.09, -0.29)	89.8%	<0.01

**Supplementary Table 2.** Subgroup analysis of the association between periodontitis and anemia based on RBC.

<b>Subgroup</b>	<b>Number of subjects</b>	<b>SMD (95%CI)</b>	<b>I<sup>2</sup></b>	<b>P value</b>
<b>Gender</b>				
Male	6	-0.13(-0.69, 0.00)	<b>63.9%</b>	0.05
Female	2	-0.08(-0.32, 0.16)	0.00%	0.51
Mix	3	-0.11(-0.31, -0.09)	8.50%	0.27
<b>Severity of periodontitis</b>				
CAL $\geq$ 5 mm	5	-0.43(-0.78, -0.08)	<b>65.7%</b>	<b>0.02</b>
BL $\geq$ 50%	3	-0.12(-0.45,0.22)	0.00%	0.50
CAL $\geq$ 1 mm	6	-0.06(-0.22, 0.11)	0.00%	0.51
<b>Sample</b>				
<50	3	-0.38(-0.83, 0.08)	66.3%	0.11
$\geq$ 50	8	-0.09(-0.28, -0.01)	0.00%	0.16
Total	9	-0.16(-0.22, -0.04)	34.0%	0.03

**Supplementary Table 3.** Subgroup analysis of the association between periodontitis and anemia based on MCV.

Subgroup	Number of subjects	SMD (95%CI)	I <sup>2</sup>	P value
<b>Gender</b>				
Male	7	-1.70 (-2.80, -0.59)	96.1%	<0.01
Female	3	-0.81 (-1.59, -0.04)	85.7%	0.04
Mix	3	-0.23 (-0.51, -0.06)	0.00%	0.12
<b>Severity of periodontitis</b>				
CAL $\geq$ 5 mm	5	-1.11(-1.95, -0.26)	93.3%	0.01
BL $\geq$ 50%	3	-1.08(-2.64, -0.42)	<b>69.3%</b>	<0.01
CAL $\geq$ 1 mm	5	-1.17(-2.40, -0.06)	96.1%	0.06
<b>Sample</b>				
<50	5	-1.73(-2.74, -0.73)	87.4%	<0.01
$\geq$ 50	8	-0.79(-1.43, -0.14)	94.3%	0.04
Total	11	-1.13(-1.69, -0.57)	93.4%	<0.01

**Supplementary Table 4.** Subgroup analysis of the association between periodontitis and anemia based on HCT.

Subgroup	Number of subjects	SMD (95%CI)	I <sup>2</sup>	P value
<b>Gender</b>				
Male	6	-0.14 (-0.34, 0.06)	0.00%	0.18
Female	2	-0.01(-0.24, 0.23)	0.00%	0.97
Mix	3	-0.26(-0.45, -0.08)	0.00%	<0.01
<b>Severity of periodontitis</b>				
CAL $\geq$ 5 mm	6	-0.10(-0.31, 0.10)	6.90%	0.32
BL $\geq$ 50%	3	-0.12(-0.48,0.23)	11.3%	0.50
CAL $\geq$ 1 mm	4	-0.20(-0.37, -0.04)	0.00%	0.02
<b>Sample</b>				
<50	3	-0.19(-0.47, 0.09)	6.10%	0.16
$\geq$ 50	8	-0.15(-0.28, -0.01)	<b>0.00%</b>	<b>0.03</b>
Total	9	-0.15(-0.27, -0.04)	0.00%	<0.01

**Supplementary Table 5.** Subgroup analysis of the association between periodontitis and anemia based on MCH.

<b>Subgroup</b>	<b>Number</b>	<b>SMD (95%CI)</b>	<b>I<sup>2</sup></b>	<b>P value</b>
<b>of subjects</b>				
<b>Gender</b>				
Male	7	-1.31(-2.14, -0.48)	93.8%	<0.01
Female	3	-0.29(-0.62, 0.05)	<b>36.5%</b>	<b>0.10</b>
Mix	5	-0.34(-0.74, 0.07)	73%	0.10
<b>Severity of periodontitis</b>				
CAL $\geq$ 5 mm	5	-0.93(-1.66, -0.19)	91.3%	0.01
BL $\geq$ 50%	3	-0.69(-1.03, -0.35)	<b>0.00%</b>	<b>&lt;0.01</b>
CAL $\geq$ 1 mm	7	-0.71(-1.39, -0.02)	93.3%	0.04
<b>Sample</b>				
<50	7	-1.04(-1.61, -0.47)	80.2%	<0.01

---

$\geq 50$	8	-0.55(-1.07, -0.03)	92.7%	0.04
Total	12*	-0.76 (-1.15, -0.37)	89.9%	<0.01

---