

## **Extent of resection and molecular pathologic subtype are potent prognostic factors of adult WHO grade II glioma**

Jinhyun Choi, MD,<sup>1</sup> Se Hoon Kim, MD, PhD,<sup>2</sup> Sung Soo Ahn, MD, PhD,<sup>3</sup> Hye Jin Choi, MD, PhD,<sup>4</sup>  
Hong In Yoon, MD, PhD,<sup>5</sup> Jae Ho Cho, MD, PhD,<sup>5</sup> Tae Hoon Roh, MD, PhD,<sup>6</sup> Seok-Gu Kang, MD, PhD,<sup>7</sup>  
Jong Hee Chang, MD, PhD,<sup>7\*</sup> and Chang-Ok Suh, MD, PhD<sup>8\*</sup>

<sup>1</sup>Department of Radiation Oncology, Jeju National University Hospital, Jeju, Korea

<sup>2</sup>Department of Pathology, Yonsei University College of Medicine, Seoul, Korea

<sup>3</sup>Department of Radiology, Yonsei University College of Medicine, Seoul, Korea

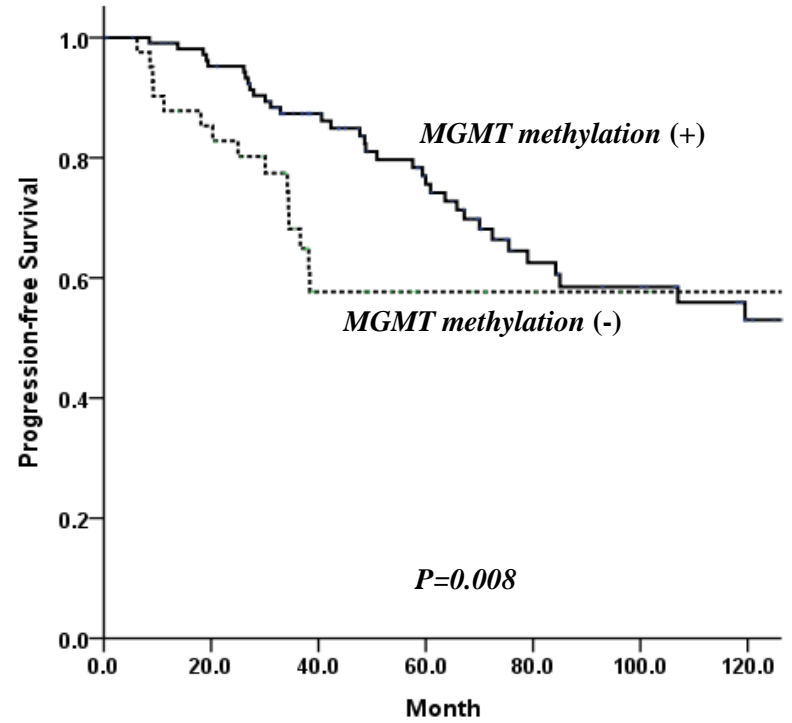
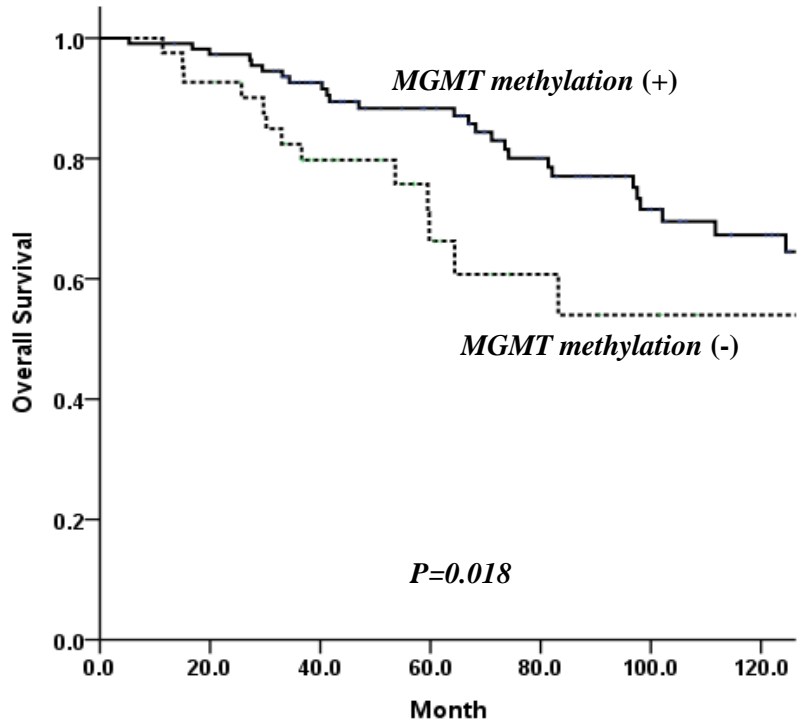
<sup>4</sup>Department of Internal Medicine, Yonsei University College of Medicine, Seoul, Korea

<sup>5</sup>Department of Radiation Oncology, Yonsei University College of Medicine, Seoul, Korea

<sup>6</sup>Department of Neurosurgery, Ajou University School of Medicine, Suwon, Korea

<sup>7</sup>Department of Neurosurgery, Yonsei University College of Medicine, Seoul, Korea

<sup>8</sup>Department of Radiation Oncology, CHA Bundang Medical Center, CHA University, Seongnam, Korea



Number at risk

Methyl(+)	101	82	66	49	34	16
Methyl(-)	41	35	22	12	6	2
	20	40	60	80	100	120

Number at risk

Methyl(+)	90	68	48	31	23	8
Methyl(-)	29	11	7	4	3	1
	20	40	60	80	100	120