

Appendix Table

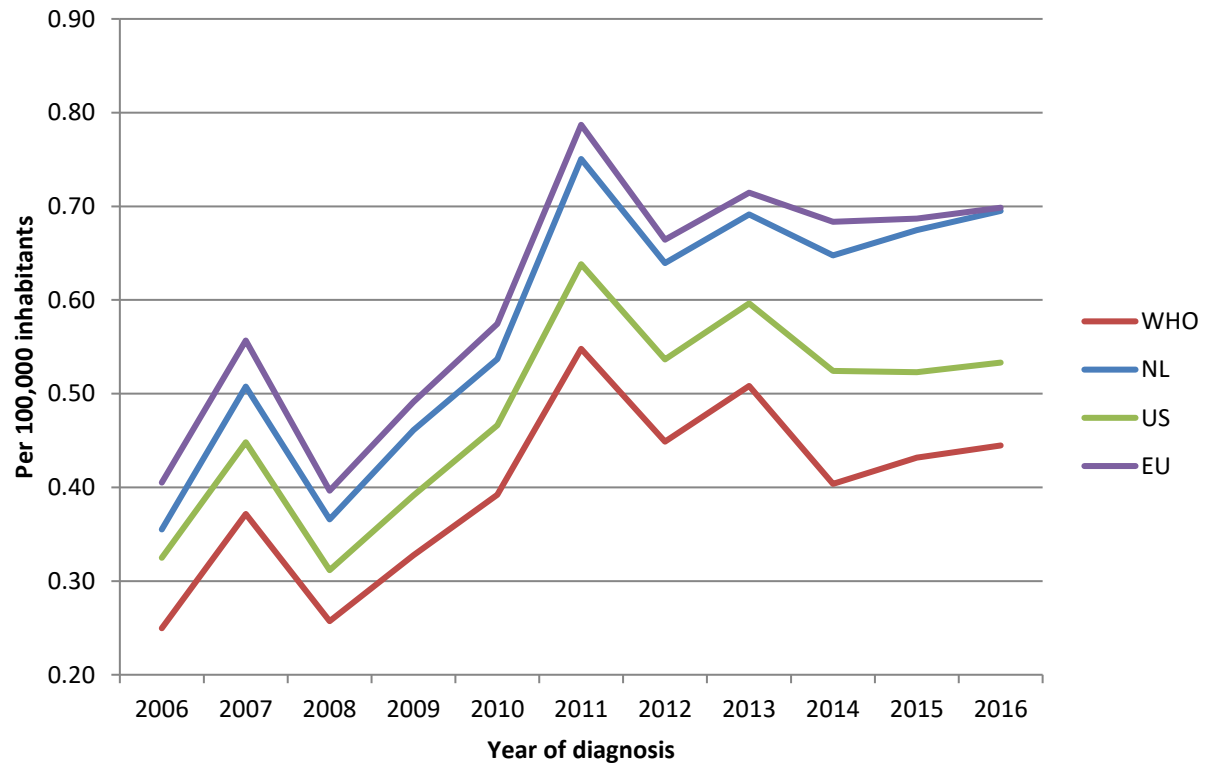
Observed incidence rates in the Netherlands standardised for several (standard) populations.

Standardized population	2006	2007	2008	2009	2010	2011	2012	2013	2014	2015	2016
NL 2006 - 2016	0.36	0.51	0.37	0.46	0.54	0.75	0.64	0.69	0.65	0.67	0.69
WHO 2000 - 2025	0.25	0.37	0.26	0.33	0.39	0.55	0.45	0.51	0.40	0.43	0.44
US 2000	0.32	0.45	0.31	0.39	0.47	0.64	0.54	0.60	0.52	0.52	0.53
EU 2013	0.41	0.56	0.40	0.49	0.57	0.79	0.66	0.71	0.68	0.69	0.70

NL = the Netherlands; WHO = World Health Organization; US = United States; EU = Europe

Appendix Figure

Observed incidence rates in the Netherlands standardised for several (standard) populations.



NL = the Netherlands; WHO = World Health Organization; US = United States; EU = Europe