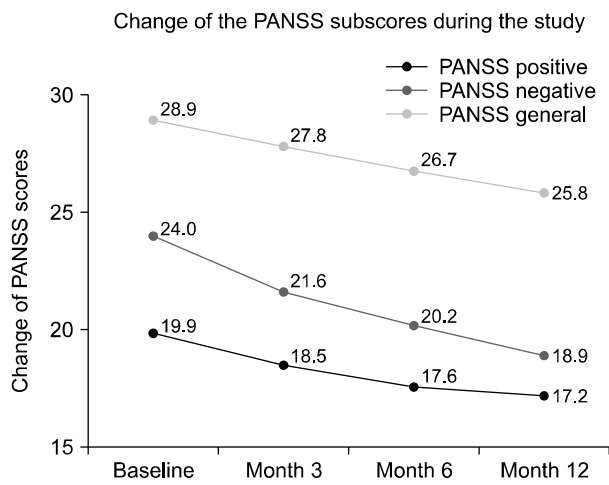
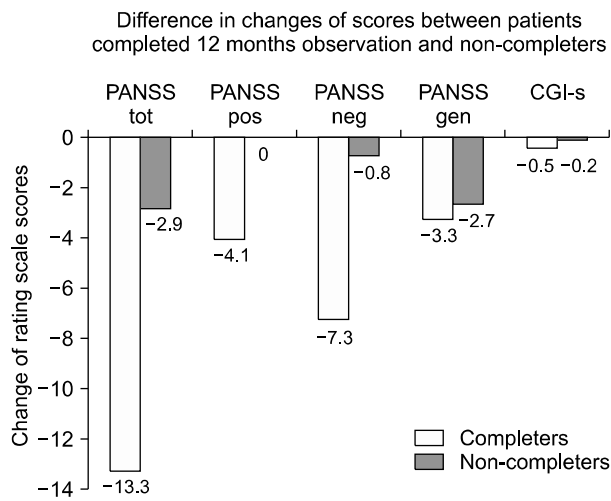


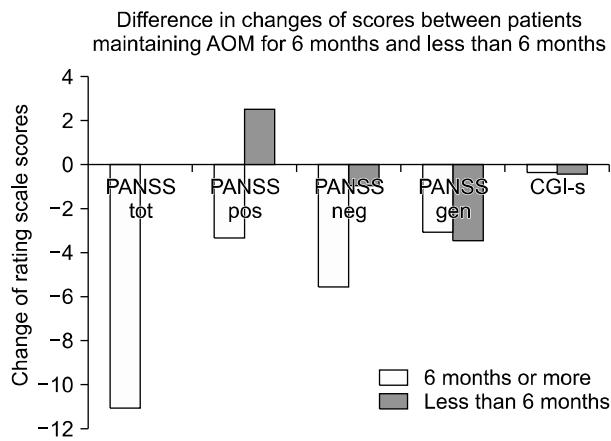
**Supplementary Fig. 1.** Distribution of aripiprazole once monthly (AOM) monotherapy and AOM/APpoly during the study. From AOM monotherapy to AOM/ antipsychotic polypharmacy (APpoly) n = 5, from AOM/APpolyo AOM monotherapy n = 2, Exact significance (2-tailed,  $p = 0.453$ ), McNemar Test. OAPs, oral antipsychotics.



**Supplementary Fig. 2.** The change of the Positive and Negative Syndrome Scale (PANSS) subscores during the study. For PANSS positive score,  $p = 0.065$ ,  $p = 0.027$ ,  $p = 0.023$ , and  $p = 0.015$  between baseline to month 3, month 3 to month 6, month 6 to month 12, and baseline to month 12, respectively, Wilcoxon Signed Rank test; Time effect,  $df = 3$ ,  $F = 3.624$ ,  $p = 0.038$ , one way GLM; For PANSS negative score,  $p = 0.005$ ,  $0.001$ ,  $0.007$ , and  $0.001$  between baseline to month 3, month 3 to month 6, month 6 to month 12, and baseline to month 12, respectively, Wilcoxon Signed Rank test; Time effect,  $df = 3$ ,  $F = 9.061$ ,  $p = 0.001$ , one way GLM; For PANSS general score,  $p = 0.090$ ,  $0.012$ ,  $0.010$ , and  $0.001$  between baseline to month 3, month 3 to month 6, month 6 to month 12, and baseline to month 12, respectively, Wilcoxon Signed Rank test; Time effect,  $df = 3$ ,  $F = 7.143$ ,  $p = 0.003$ , one way GLM.



**Supplementary Fig. 3.** Differences in changes of scores between patients completed 12 months observation and non-completers. Tot, total score; pos, positive; neg, negative; gen, general; CGI-S, Clinical Global Impression-Severity; PANSS, The Positive and Negative Syndrome Scale; Mann-Whitney *U* test;  $p = 0.007$ ,  $p = 0.053$ ,  $p = 0.000$ ,  $p = 0.616$ ,  $p = 0.291$ , respectively from the left side in the figure ( $n = 12$  vs.  $n = 6$ ).



**Supplementary Fig. 4.** Differences in changes of scores between patients completed 6 months observation and less than 6 months observation.

Tot, total score; pos, positive; neg, negative; gen, general; AOM, aripiprazole once monthly; CGI-S, Clinical Global Impression-Severity; PANSS, The Positive and Negative Syndrome Scale; Mann-Whitney  $U$  test;  $p = 0.078$ ,  $p = 0.078$ ,  $p = 0.157$ ,  $p = 1.000$ ,  $p = 0.837$ , respectively from the left side in the figure ( $n = 16$  vs.  $n = 2$ ).

**Supplementary Table 1.** Other psychotropics administration pattern during the study (n = 18)

Variable	Value
Mood stabilizers immediate before AOM, yes	2 (11.1)
Mood stabilizers at the first time of AOM (baseline), yes	2 (11.1)
Mood stabilizers at month 3, yes	1 (5.6)
Mood stabilizers at month 6, yes	1 (5.6)
Mood stabilizers at month 12, yes	1 (5.6)
Antiparkinsonian drugs immediate before AOM, yes	8 (44.4)
Antiparkinsonian drugs at the first time of AOM (baseline), yes	7 (38.9)
Antiparkinsonian drugs at month 3, yes	3 (16.7)
Antiparkinsonian drugs at month 6, yes	2 (11.1)
Antiparkinsonian drugs at month 12, yes	4 (22.2)
Antianxiety drugs immediate before AOM	0.9 ± 1.0
Antianxiety drugs at the first time of AOM (baseline)	0.7 ± 0.8
Antianxiety drugs at month 3	0.7 ± 0.8
Antianxiety drugs at month 6	0.6 ± 0.8
Antianxiety drugs at month 12	0.4 ± 0.6

Values are presented as number (%) or mean ± standard deviation.  
AOM, aripiprazole once monthly.