

Figure S3.

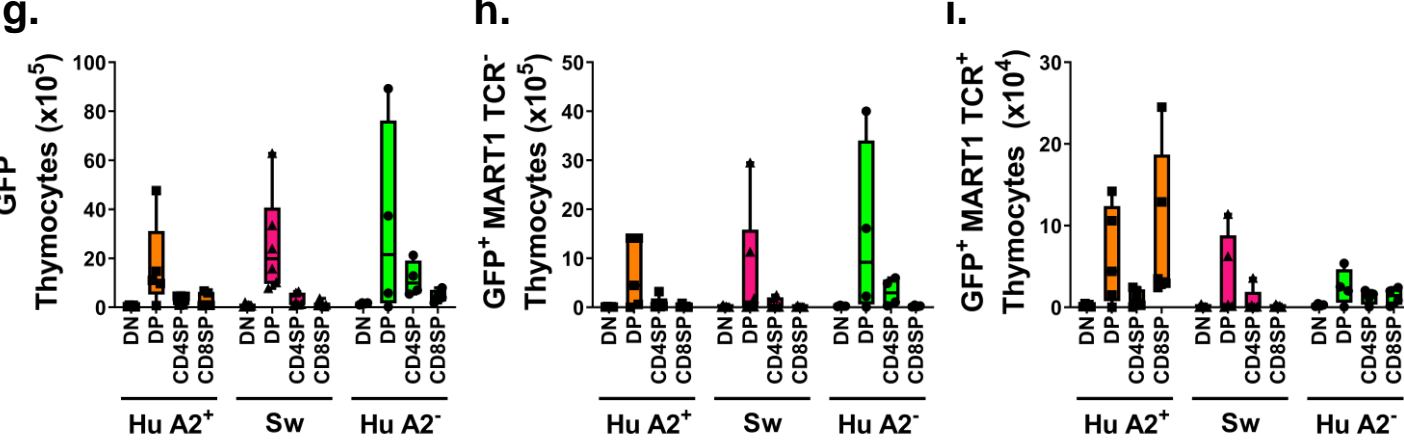
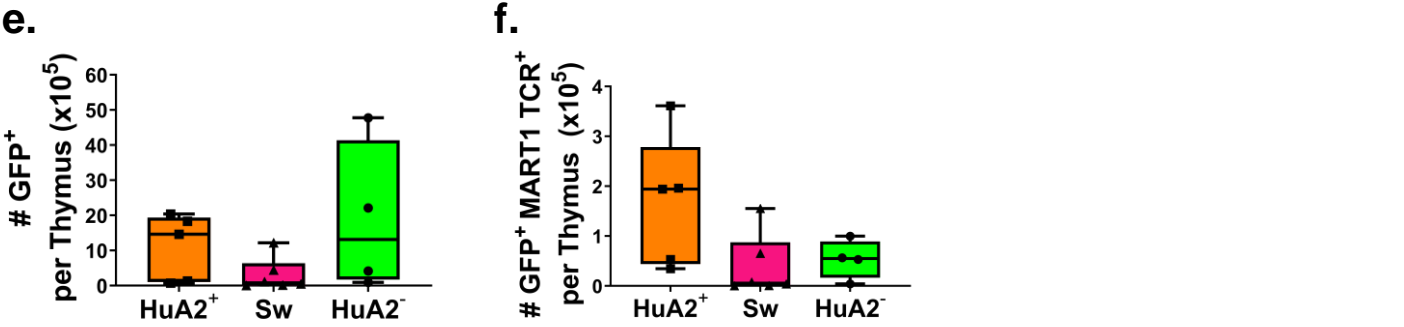
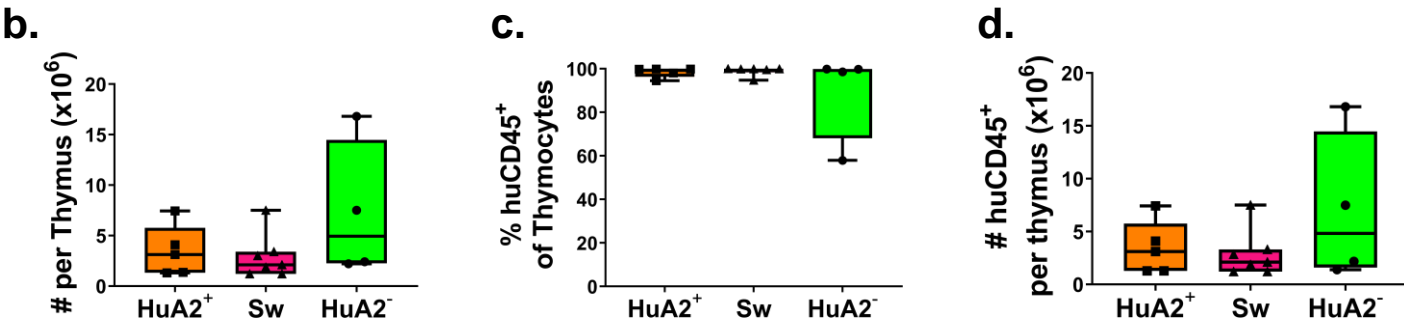
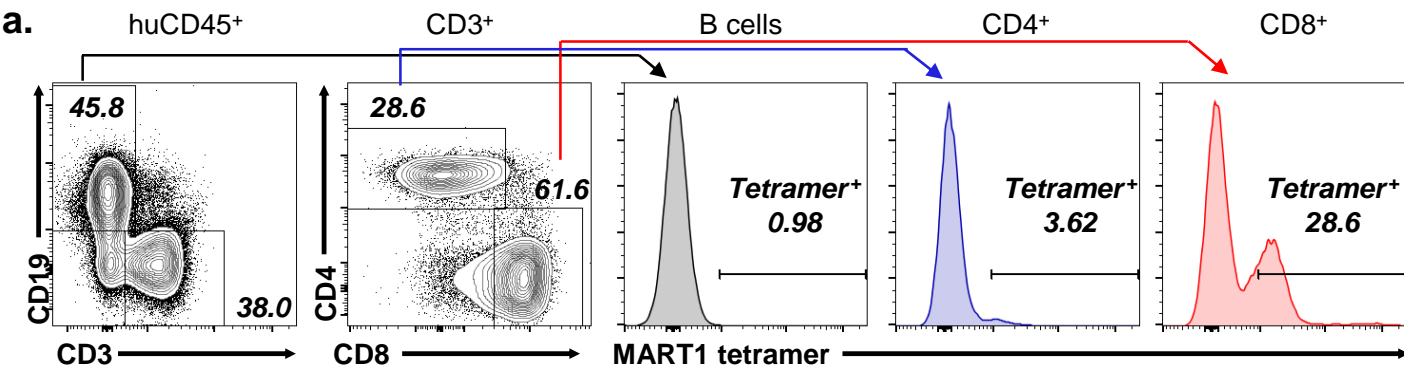


Figure S3: a. Mart1 tetramer staining of splenocytes from a humanized mouse transplanted with Mart1 TCR-transduced HLA-A2⁺ fetal liver CD34⁺ cells and an HLA-A2⁺ fetal thymus fragment. b. Absolute counts of thymus grafts at takedown, 10-14 weeks post-transplantation. c. Percent and d. absolute counts of human CD45⁺ cells in thymus grafts. Absolute counts of e. GFP⁺ and f. GFP⁺ MART1 TCR⁺ cells in grafted thymi at takedown. Absolute counts of thymocyte subpopulations of g. GFP⁻, h. GFP⁺ MART1 TCR⁻, and i. GFP⁺ MART1 TCR⁺ thymocytes. A2⁺ n = 5, Sw = 6 and A2⁻ n = 4 mice included in analysis.