

Figure S4.

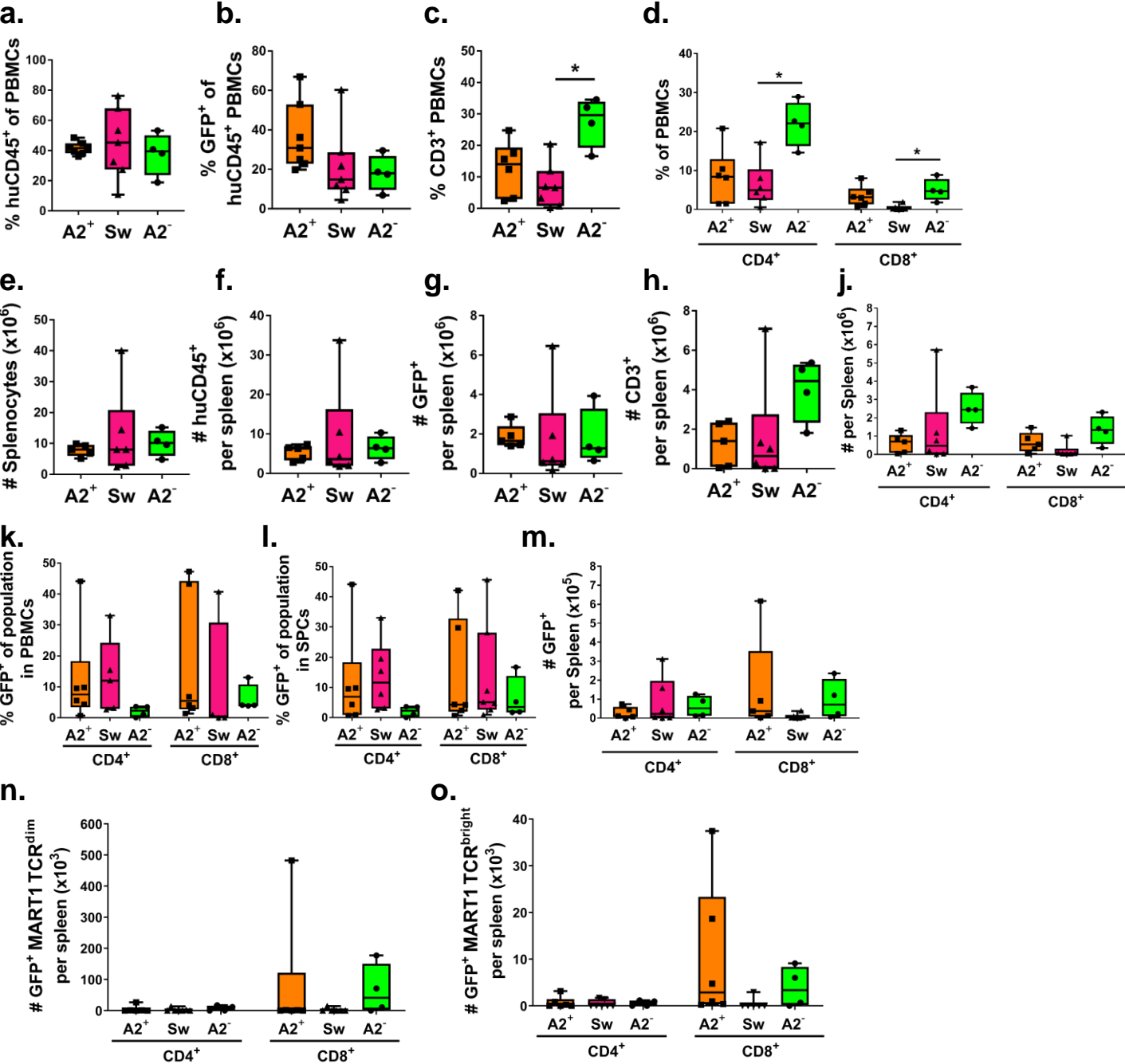


Figure S4: Proportions of **a.** huCD45⁺ cells; **b.** percent of GFP⁺ of huCD45⁺ cells; and **c.** proportions of T cells and **d.** CD4⁺ and CD8⁺ T cells of PBMCs. Absolute counts in transplanted mice, of **e.** total splenocytes, **f.** total huCD45⁺ cells per spleen, **g.** total GFP⁺ cells per spleen, **h.** total CD3⁺ T cells, **i.** total CD4⁺CD3⁺ and CD8⁺CD3⁺ cells. Percent GFP⁺ of CD4⁺ and CD8⁺ T cells in **k.** PBMCs or **l.** splenocytes, and absolute counts of **m.** GFP⁺CD4⁺ and GFP⁺CD8⁺ T cells among splenocytes. **n.** total GFP⁺Mart1^{dim} and **o.** total GFP⁺Mart1^{bright} T cells per spleen. Data are from A2⁺ n = 6, Sw n = 5 and A2⁻ n = 4 transplanted mice, respectively, at takedown, 10-14 weeks post-transplantation. * = p < 0.05 by the Kruskal-Wallis test using Dunn's correction for multiple comparisons.