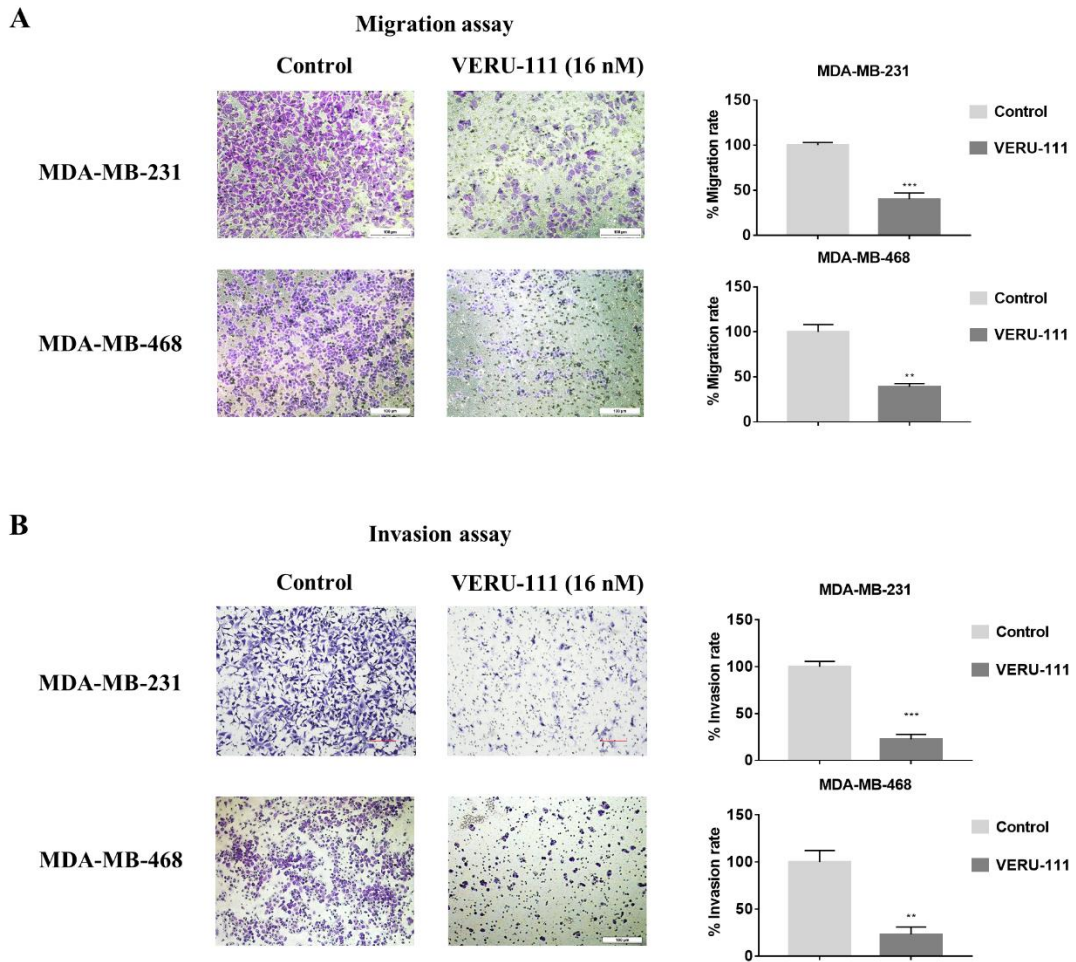


Supplementary Figure 1



**Supplementary Figure S1.** VERU-111 inhibits TNBC cell migration and invasion at 16 nM. (A) Representative images of migration assays showing MDA-MB-231 (upper panel) and MDA-MB-468 (lower panel) cells treated with VERU-111 (16 nM) for 24 h and 48 h, respectively, that have migrated through transwell membrane inserts. (B) Representative images of invasion assays showing MDA-MB-231 (upper panel) and MDA-MB-468 (lower panel) cells treated with VERU-111 (16 nM) for 24 h and 48 h, respectively, using Matrigel-coated transwell membrane inserts. All data are presented as the grand mean  $\pm$  SEM of three independent experiments, with *p*-values determined relative to the Control group (normalized to 100%), scale bar = 100  $\mu$ m.