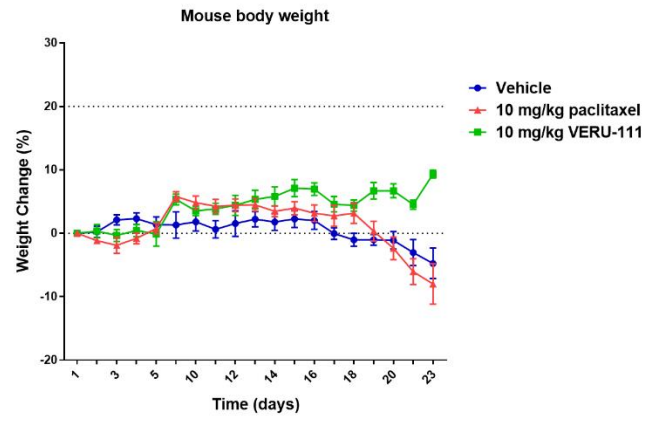
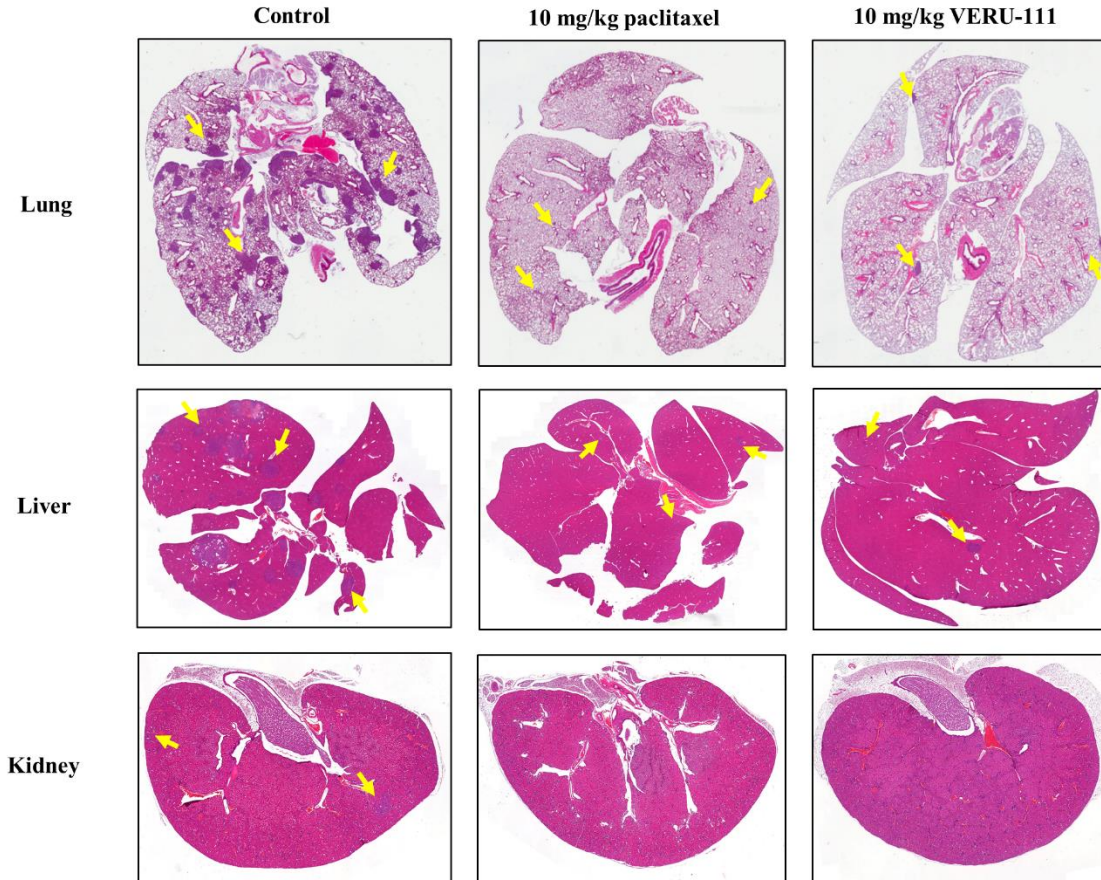


Supplementary Figure 5

A



B



Supplementary Figure S5. Body weight changes and histopathology of visceral organs following tail vein injection of MDA-MB-231 cells. VERU-111 exhibits potent anti-metastasis effects. (A) Percent change in body weight \pm SEM over time relative to starting body weight of mice in the vehicle (blue circles), paclitaxel (red triangles) or VERU-111-treated (green squares) cohorts (n = 7 mice/group). Only mice in the VERU-111 group continued to gain weight over the course of the experiment. Untreated mice that develop lung metastases typically lose body weight as they approach morbidity. (B) Representative H&E-stained slides of the metastases present in the lungs, livers, and kidneys harvested from mice in each cohort; examples of metastatic lesions are indicated by yellow arrows.