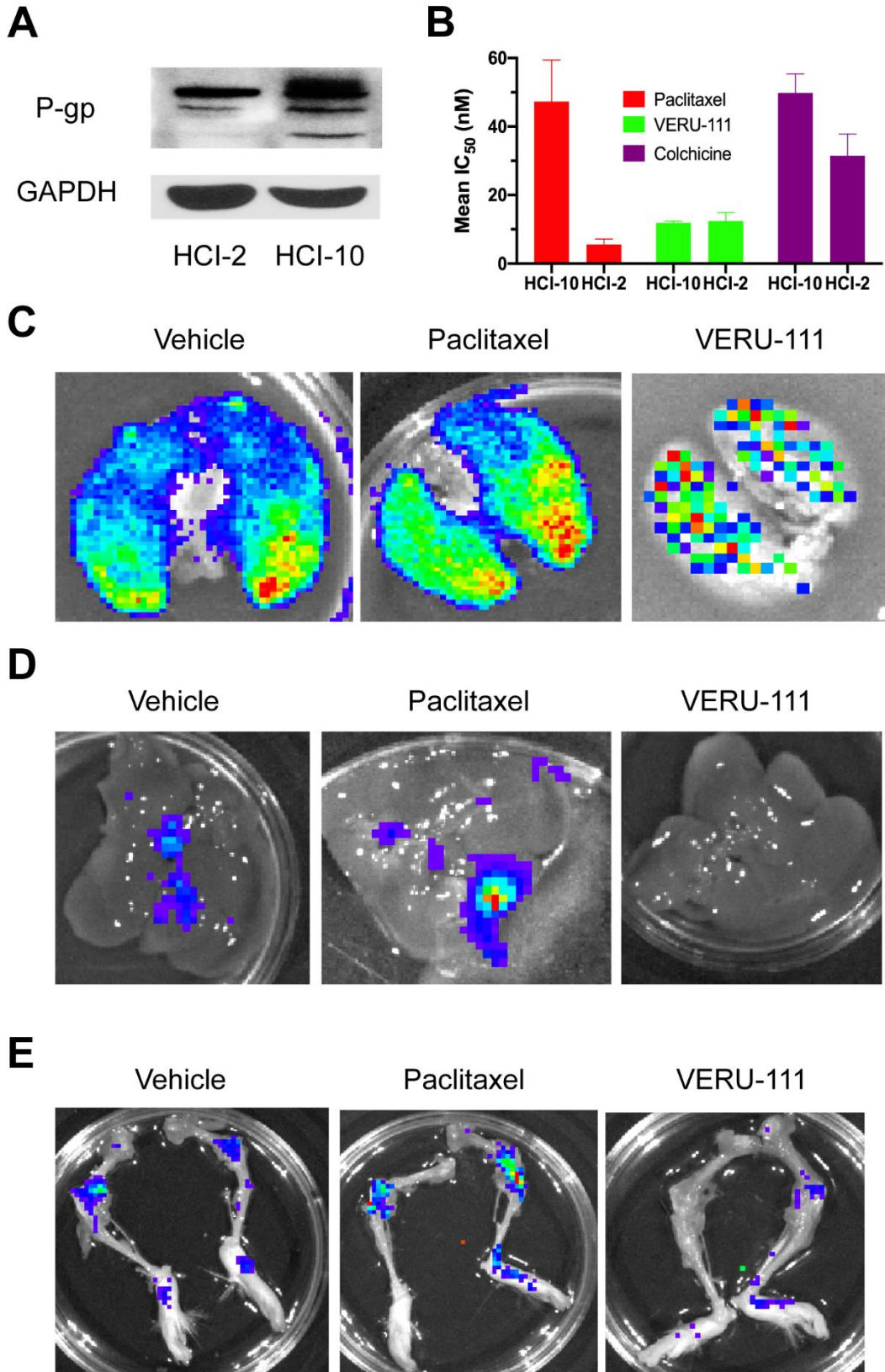


Supplementary Figure 6



Supplementary Figure S6. P-gp protein levels of HCI-2-Luc2 and HCI-10-Luc2 patient-derived primary cells and representative endpoint *ex vivo* bio-imaging data obtained using the taxane-resistant HCI-10-Luc2 patient-derived reporter-labeled xenograft model. (A) P-gp expression in HCI-2 and HCI-10 cells was determined by western blotting. (B) The growth inhibitory effect of colchicine, paclitaxel and VERU-111 was measured *in vitro* by the IncuCyte S3 live cell imaging system. IC₅₀ values were calculated based on changes in density as measured by phase contrast at study endpoint relative to initial plating density. The bar graphs represent the grand mean \pm SEM of the calculated IC₅₀ values from at least 3 independent experiments. (C-E) Images representative of the mean total photon flux per treatment cohort as determined by *ex vivo* bio-imaging for the lungs (C), liver (D) and leg bones (E).