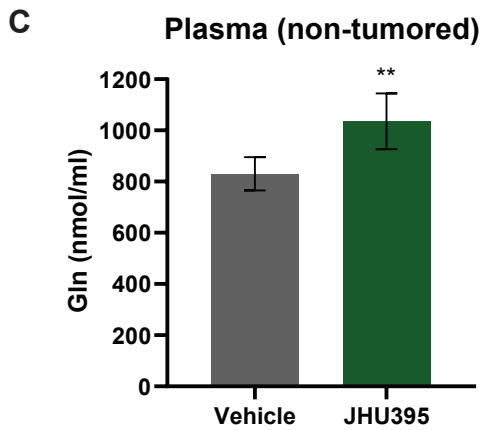
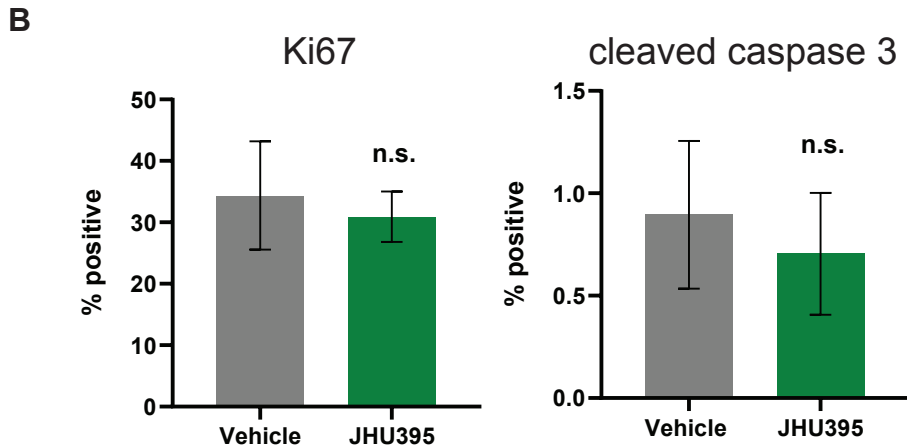
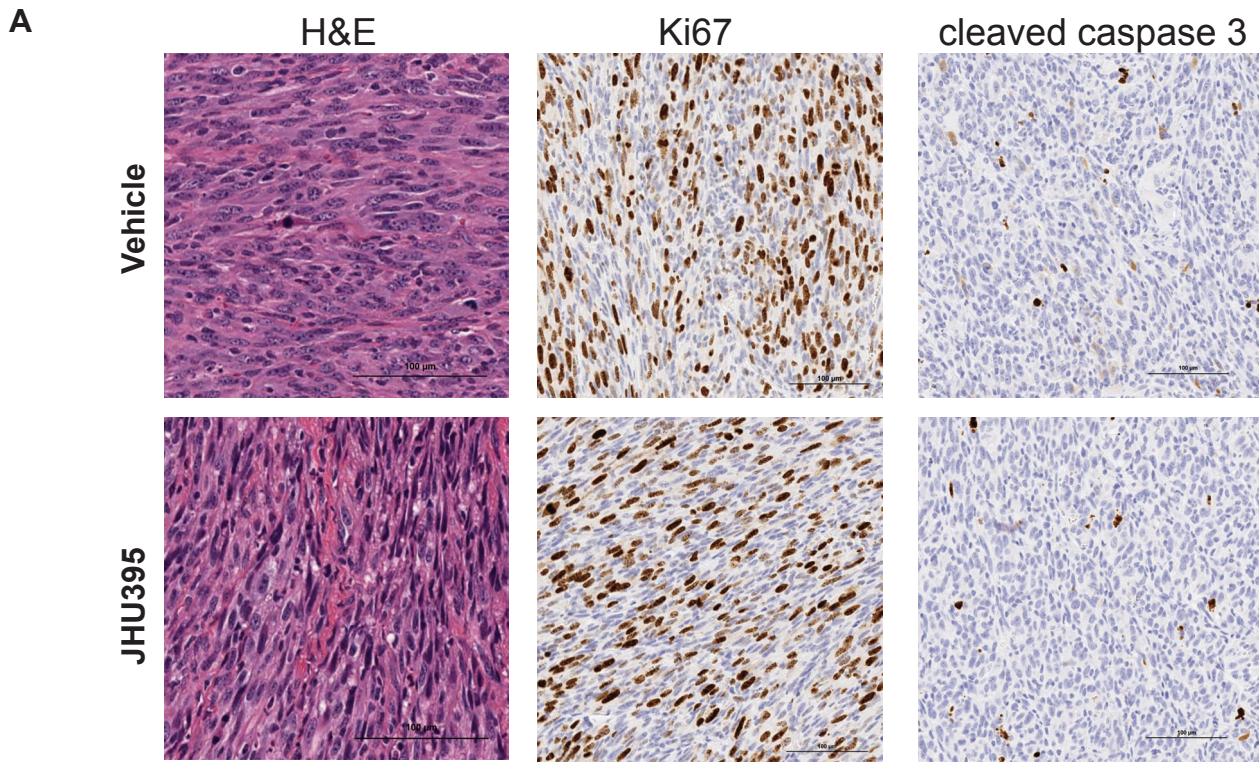


Supplemental Figure 3



Supplemental Figure 3: A) Representative H&E, Ki67, and cleaved caspase-3 stained images of murine flank MPNST from vehicle or JHU395 treatment groups at study termination. Scalebar = 100 μ m. B) Quantification of percent Ki67 or cleaved caspase-3 cells per group based on analysis of five regions per tumor, n = 3 tumors per treatment group. Statistical testing done by Student's t-test. C) Plasma glutamine quantified in JHU395- and vehicle-treated non-tumored B6 mice. Data shown is mean \pm SD. ** 0.001 < p \leq 0.01 by Student's t-test.