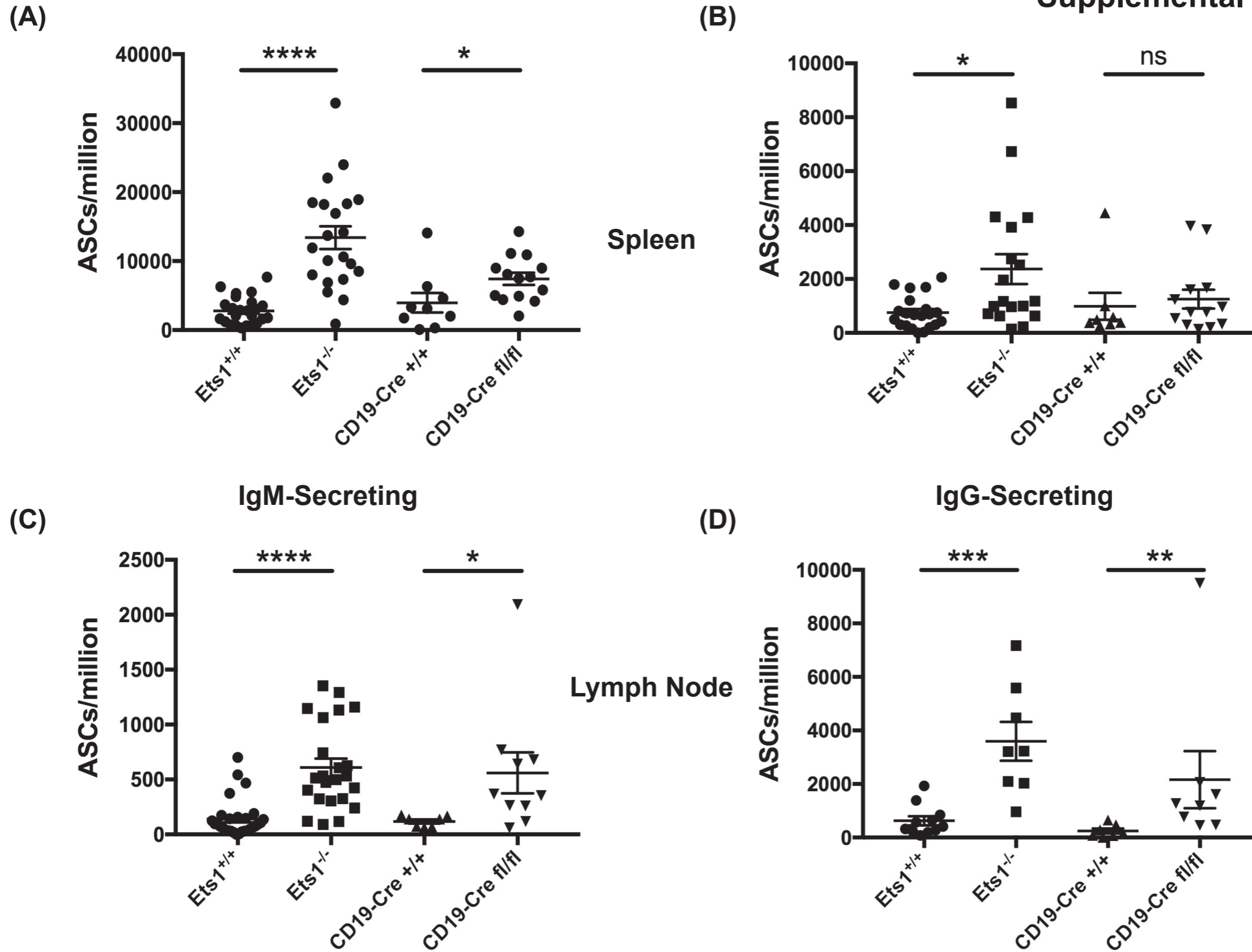
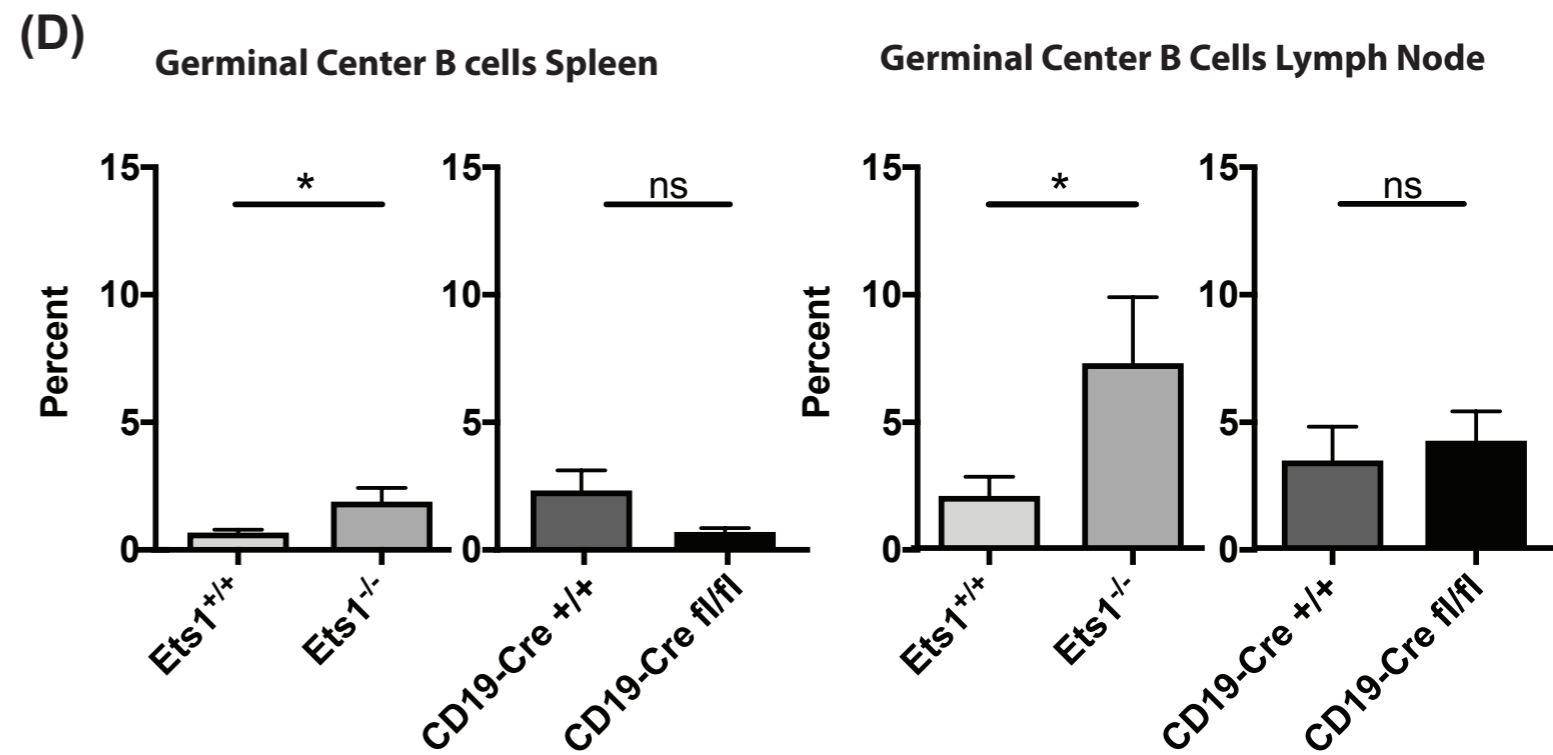
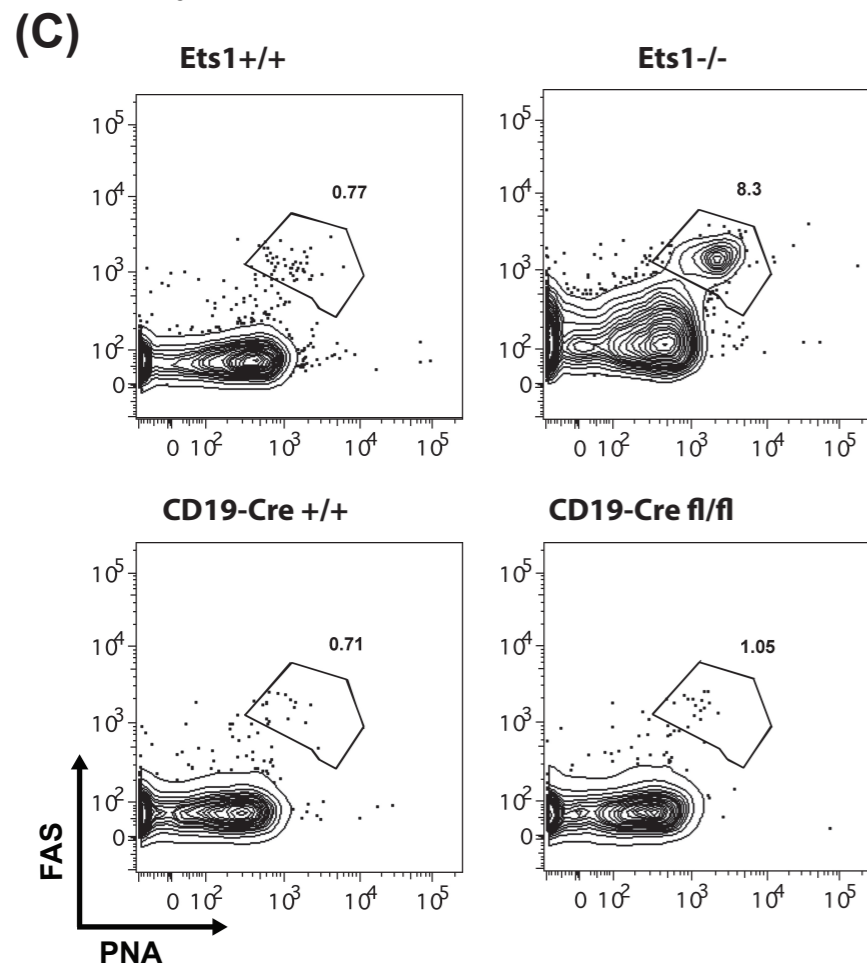
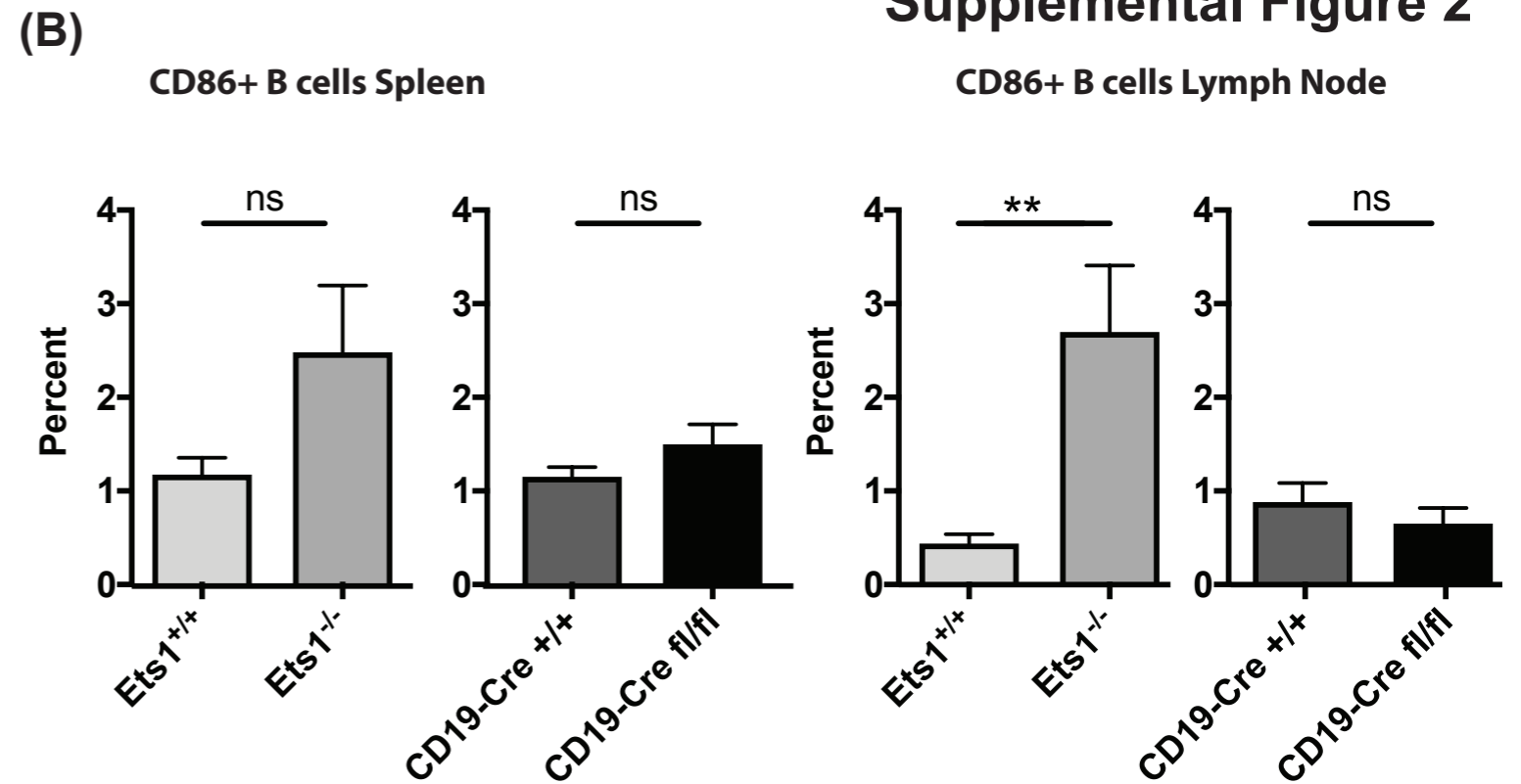
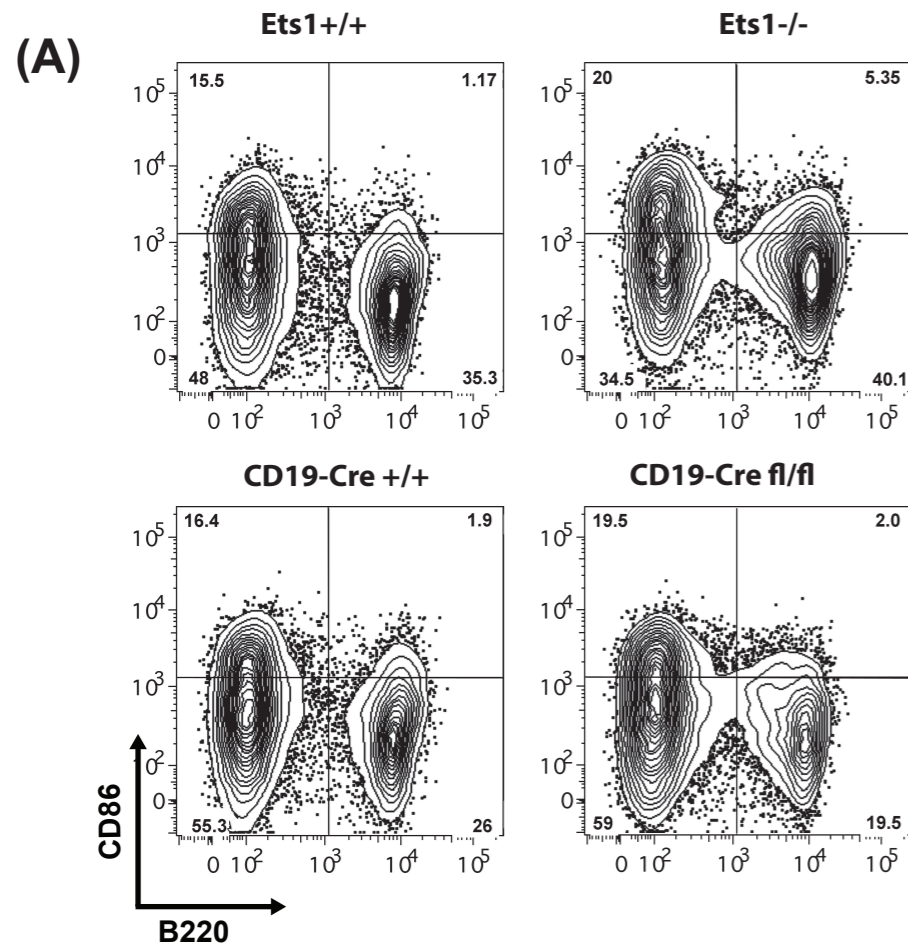


Supplemental Figure 1



Supplemental Figure 1. CD19-Cre *Ets1*^{fl/fl} mice have increased numbers of ASCs by ELISPOT. Quantification of IgM and IgG antibody-secreting cells in spleen and lymph nodes using ELISPOT. (Top) Spleen cells. (Bottom) Lymph Node cells (n 7-20= mice). (n=20 *Ets1*^{+/+}, 20 *Ets1*^{-/-}, 9 CD19-Cre *Ets1*^{+/+} and 14 CD19-Cre *Ets1*^{fl/fl} mice) -**p*<0.05; ***p*<0.01; ****p*<0.001; *****p*<0.0001; ns – not significant.

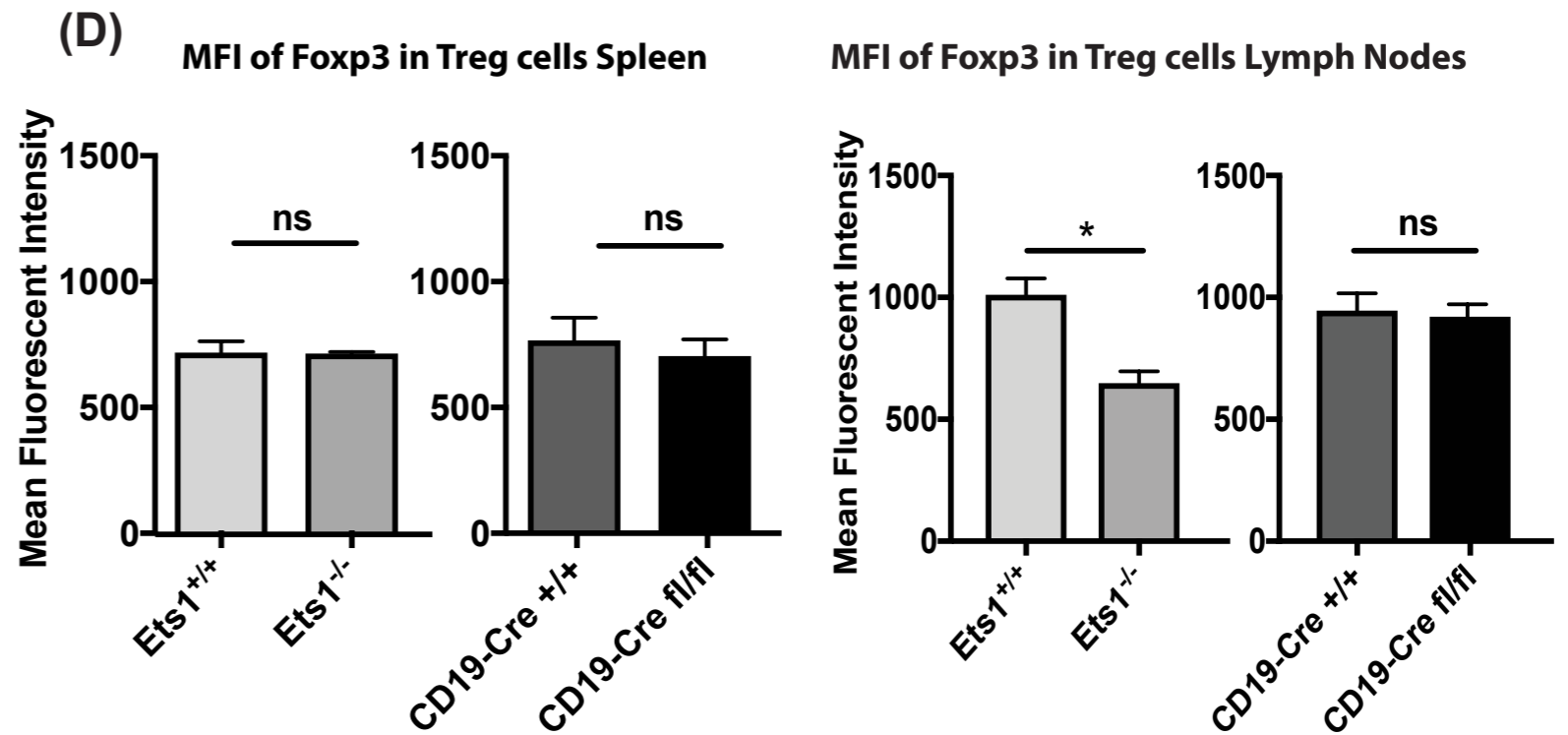
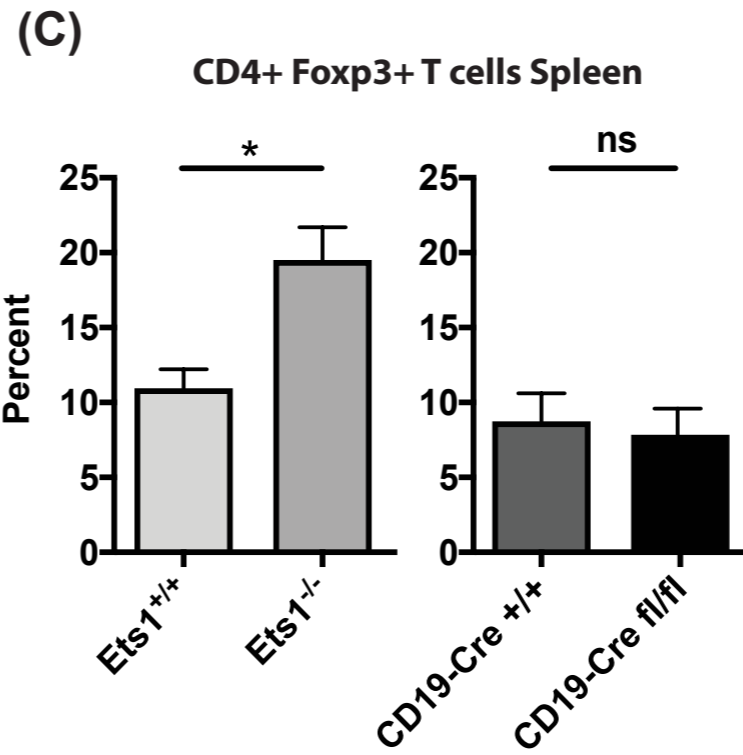
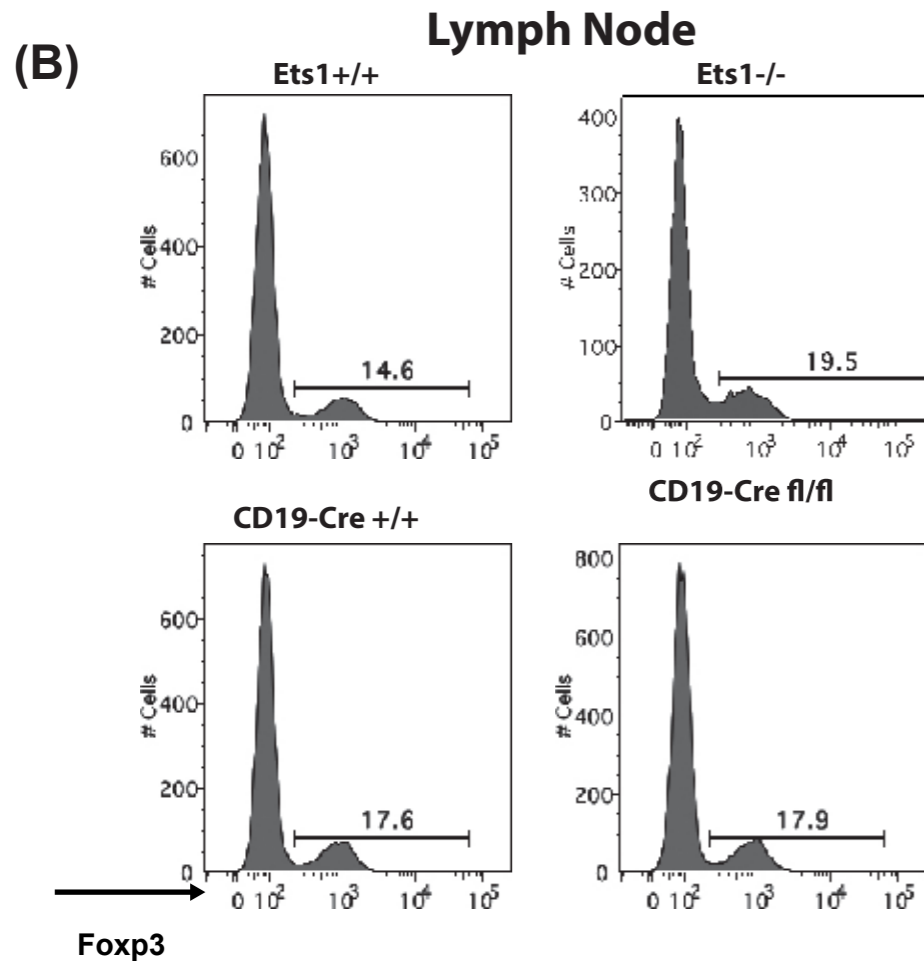
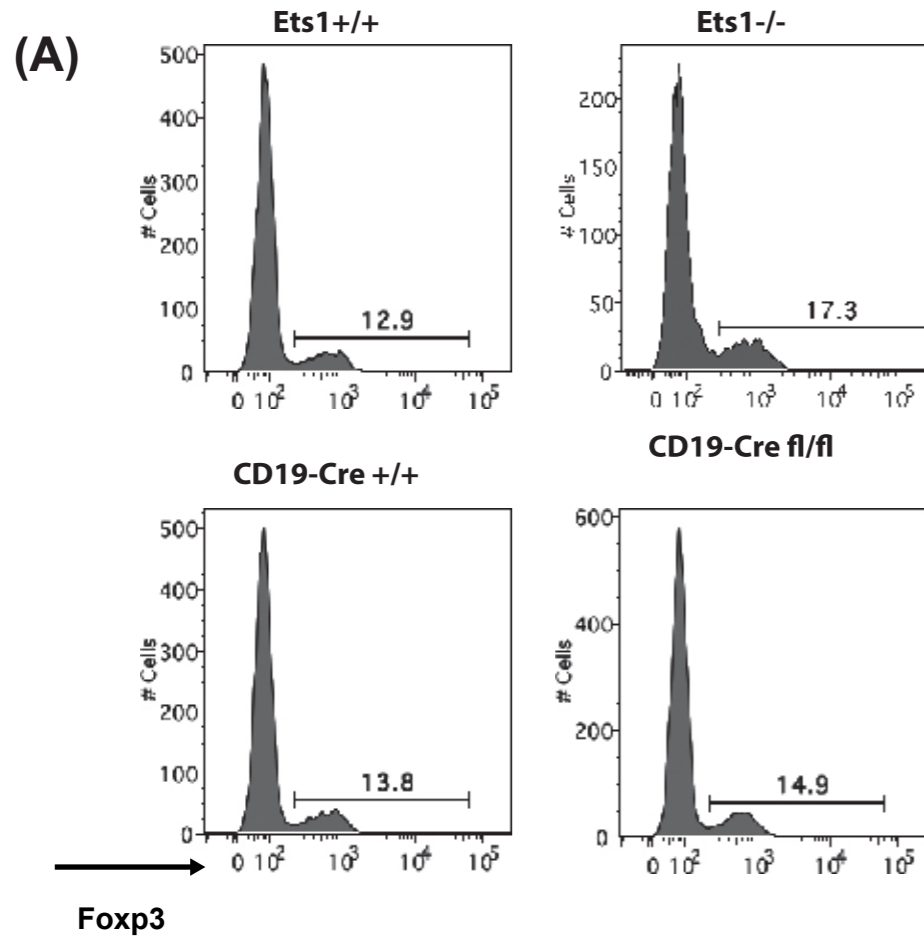
Supplemental Figure 2



Supplemental Figure 2. *Ets1*^{-/-} mice, but not *CD19-Cre Ets1*^{fl/fl} mice, have increases in CD86+ B cells and germinal center B cells. (A) Flow cytometry analysis of B220 versus CD86 in gated live spleen cells showing that *Ets1*^{-/-} mice, but not *CD19-Cre Ets1*^{fl/fl} mice, have increased percentages of CD86+ B cells. (B) Quantification of the percentages of CD86+ B cells in spleen and lymph nodes of the various strains of mice (n=8 *Ets1*^{+/+}, 6 *Ets1*^{-/-}, 11 *CD19-Cre Ets1*^{+/+} and 8 *CD19-Cre Ets1*^{fl/fl} mice). (C) Flow cytometry analysis of PNA versus Fas staining in gated live, B220+ spleen cells showing that *Ets1*^{-/-} mice, but not *CD19-Cre Ets1*^{fl/fl} mice, have increased percentages of germinal center B cells. (D) Quantification of the percentages of germinal center B cells in the spleen and lymph nodes of the various strains of mice (n=10 *Ets1*^{+/+}, 8 *Ets1*^{-/-}, 11 *CD19-Cre Ets1*^{+/+} and 8 *CD19-Cre Ets1*^{fl/fl} mice). *p<0.05; **p<0.01; ns – not significant.

Supplemental Figure 3

Spleen



Supplemental Figure 3. Ets1^{-/-} mice have increased percentages of CD4⁺Foxp3⁺ regulatory T cells, although the intensity of Foxp3 staining is reduced in Tregs from lymph nodes of Ets1^{-/-} mice. (A-B) Flow cytometry analysis of Foxp3 staining in gated live CD4⁺ spleen and lymph node T cells. (C) Quantification of the percentages of Foxp3⁺ CD4⁺ T cells in spleen and lymph nodes of the various strains of mice (n=3 Ets1^{-/-} mice and 5 mice of the other genotypes). (D) Quantification of the mean fluorescent intensity (MFI) of Foxp3 staining in live CD4⁺Foxp3⁺ T cells in the spleen and lymph nodes of the various strains of mice. *p<0.05; ns – not significant.