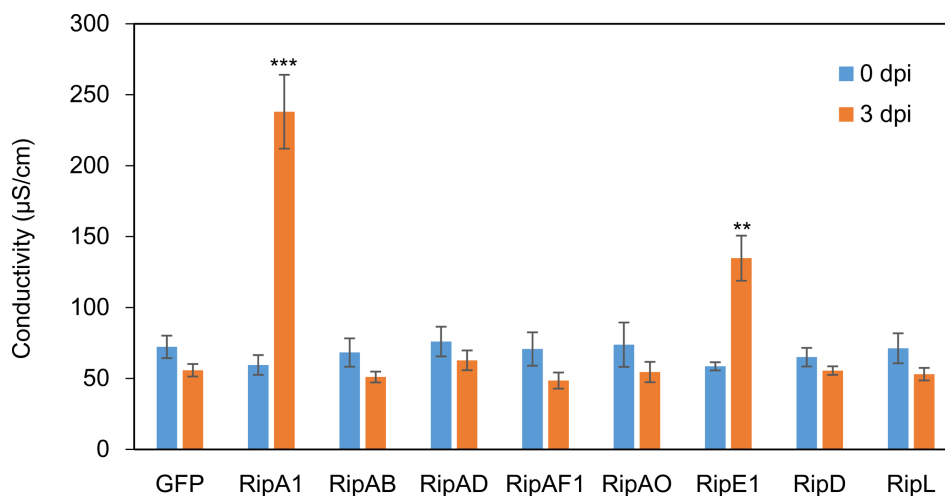
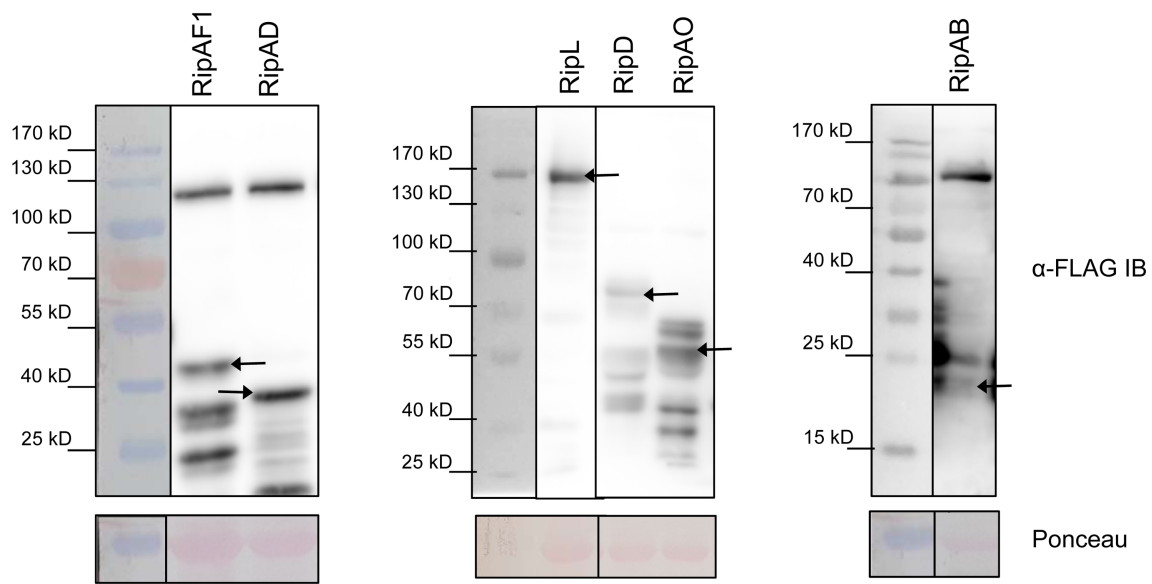


**Supplementary Table 1.** Primers used in this study

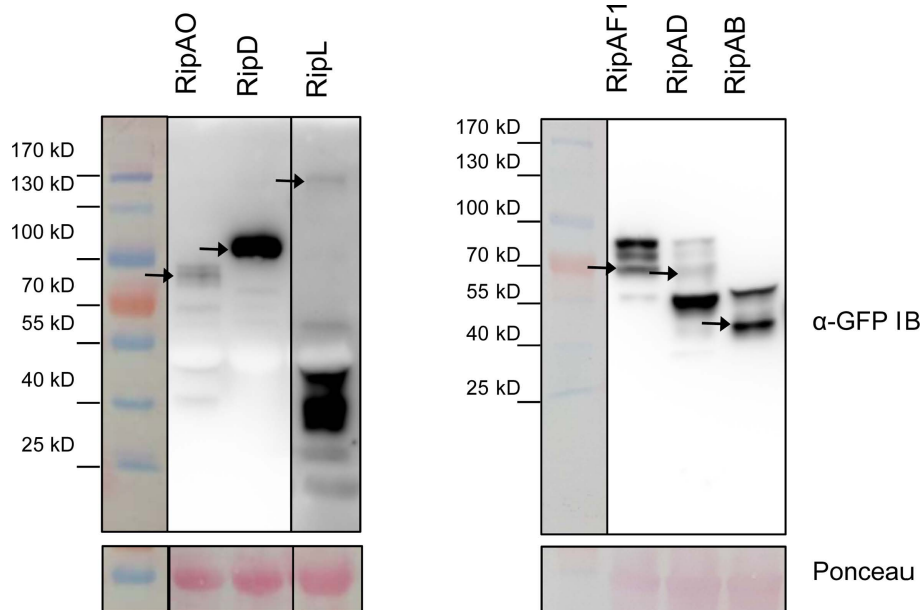
Gene	Sequence (5' → 3')	
	Forward	Reverse
RipA1-mod1	GGTCTCAAATGTCGATTGGCAGATCAAAGTC	GGTCTCAGCGCGTTGCCAGGATCTG
RipA1-mod2	GGTCTCAGCGCTGGCGATCAAGGCA	GGTCTCATTGGCCATCCCCTCCTGG
RipA1-mod3	GGTCTACCAATGTCGGGGTGTCCG	GGTCTCACGAATTCGGGAGACAGACCAGCA
RipAB	GGTCTCAAATGAGCCACAGCAAATCAAGGC	GGTCTCACGAAGTCGTCGTCGTCCTTGATCTTC
RipAD	GGTCTCAAATGTTGAAAATAGGCCGTATCAC	GGTCTCACGAACCAGTCGAGCTGCGGATC
RipAF1	GGTCTCAAATGGGTTTGCCACGGATCC	GGTCTCACGAATCGCGTTGATGTGGATGCC
RipAO	GGTCTCAAATGGCGGGTCCCCTACTGCTCA	GGTCTCACGAAGCGGTACCCATTCTGCTGCTT
RipD-mod1	GGTCTCAAATGGGAAATTTACAGATTAAGC-GAGCTCTGC	GGTCTCACGTAAGGCCCATGTGTTAAGCCC
RipD-mod2	GGTCTCATAACGGCTAAAGAGTACATCCTG	GGTCTCACGAAGACGCGATCATAGTCGATC
RipE1	GGTCTCAAATGCCGCCGCTCTGCCGTCGAT	GGTCTCACGAAGCTTTCTGTGGCGGGCGGCT-CACCTTT
RipL-mod1	GGTCTCAAATGTGGCGTTCAAACATCGGT	GGTCTCAGGCAAGAACGCGTCCTTCA
RipL-mod2	GGTCTCATGCCCGGAAGCGAAAACG	GGTCTCACAGGGCCGGCTTCAATGC
RipL-mod3	GGTCTCACCTGCACGCGTTCTCGAC	GGTCTCACGAACTTTGCTTTGCCCTTGCCC
<i>AtLDIP</i>	GGTCTCAAATGGCTACTCAAACGGATCTCGCT	GGTCTCACGAAATCAAGTGGATGGAACCTCAA
<i>NbActin</i>	GATGAAGATACTCACAGAAAGA	GTGGTTTCATGAATGCCAGCA
<i>NbSGT1</i>	TAATGTGTCATCAGATGCC	ACTTCTTTCCAGTTTGTGCGAC
<i>NbCYP71D20</i>	AAGGTCCACCGCACCATGTCCTTAGAG	AAGAATTCCTTGCCCCTTGAGTACTTGC
<i>NbACRE31</i>	AAGGTCCCGTCTTCGTCGGATCTTCG	AAGAATTCGGCCATCGTGATCTTGGTC
<i>NbACRE132</i>	AAGGTCCAGCGAAGTCTCTGAGGGTGA	AAGAATTCCAATCCTAGCTCTGGCTCCTG



**Supplementary Fig. 1.** Quantification of effector-induced cell death by electrolyte leakage assay. Conductivity in *Nicotiana benthamiana* leaf discs expressing each effector or GFP control was measured at 0 and 3 dpi. Data are presented as mean  $\pm$  standard error of mean ( $n = 4$ ). Statistical significance compared to GFP-expressing leaf is indicated by asterisks (Student's  $t$ -test, \*\* $P < 0.05$ , \*\*\* $P < 0.01$ ). This experiment was repeated more than three times with similar results. dpi, days post infiltration.



**Supplementary Fig. 2.** Detection of the 3×FLAG-tagged effector proteins. *Nicotiana benthamiana* leaf tissues infiltrated with *Agrobacterium tumefaciens* AGL1 strain carrying 3×FLAG-tagged effector construct were harvested at 1 dpi. Proteins were extracted from the samples and the effector protein expression was monitored by western blot with anti-FLAG antibody. Correct protein bands of predicted effector size are indicated with black arrows. Ponceau red staining is shown as a loading control. dpi, days post infiltration.



**Supplementary Fig. 3.** Detection of the YFP-tagged effector proteins. *Nicotiana benthamiana* leaf tissues infiltrated with *Agrobacterium tumefaciens* AGL1 strain carrying 3×FLAG-tagged effector construct were harvested at 1 dpi. Proteins were extracted from the samples and the effector protein expression was monitored by western blot with anti-FLAG antibody. Correct protein bands of predicted effector size are indicated with black arrows. Ponceau red staining is shown as a loading control. dpi, days post infiltration.