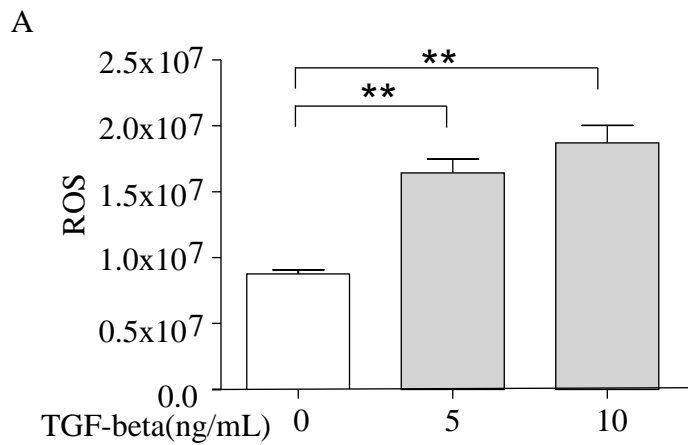
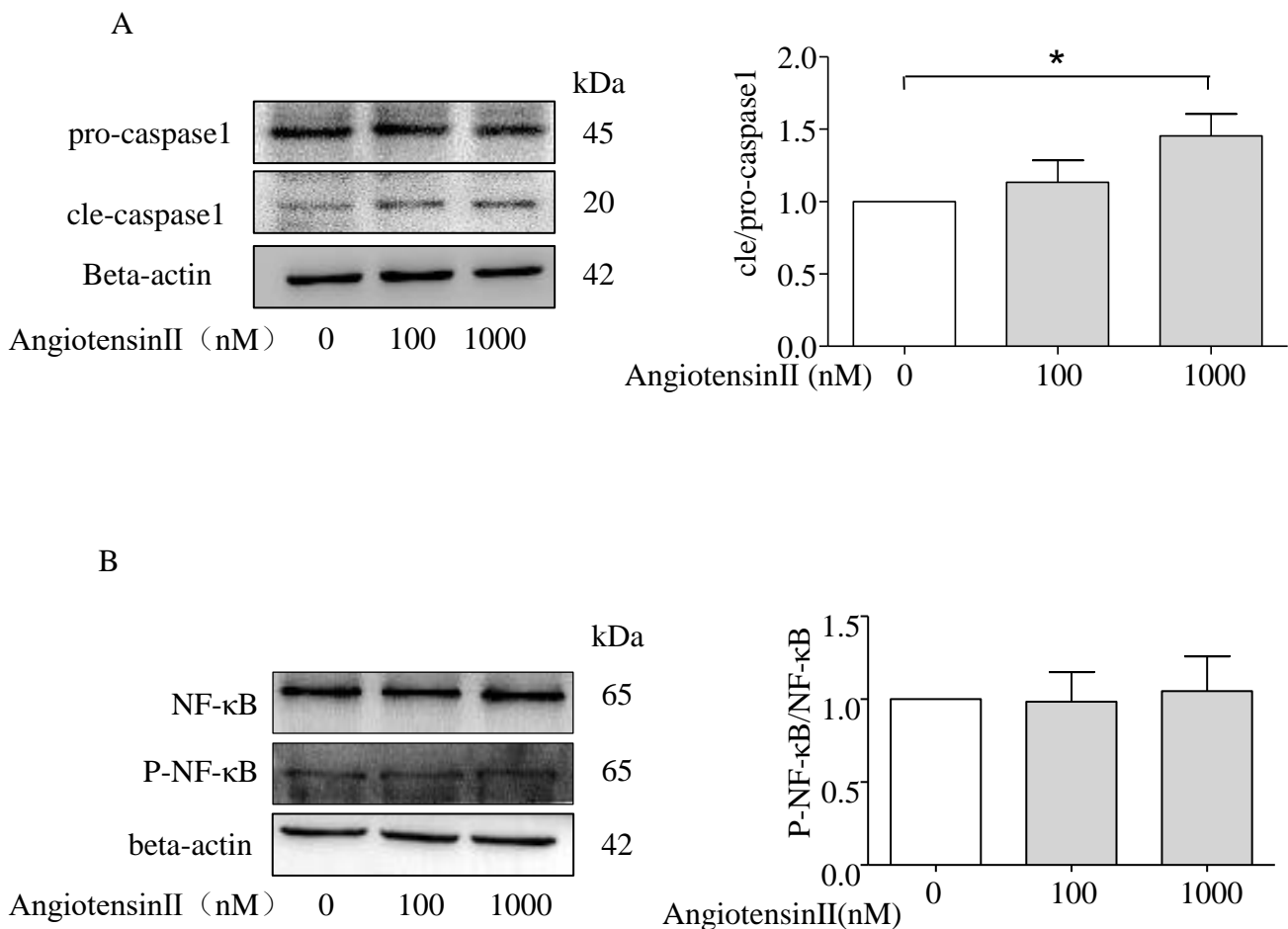


Supplementary Figure 1



Supplementary Figure 1 TGF-beta increased the level of ROS in NRK-52E cells. summarized data showing the effects of TGF-beta on the level of ROS in 72h (N=6). *p < 0.05, **p < 0.01 vs. TGF-beta 0ng/ml.

Supplementary Figure 2



Supplementary Figure 2 the effects of AngiotensinII on NLRP3 inflammasome activation and NLRP3 transcription.(A)Representative Westernblot and summarized data showing the expression of Caspase1,cleave-caspase1 and beta-actin (N=4).*p < 0.05 vs. AngII 0nM.(B)Representative Westernblot and summarized data showing the expression of NF-κB, p-NF-κB and beta-actin (N=4).