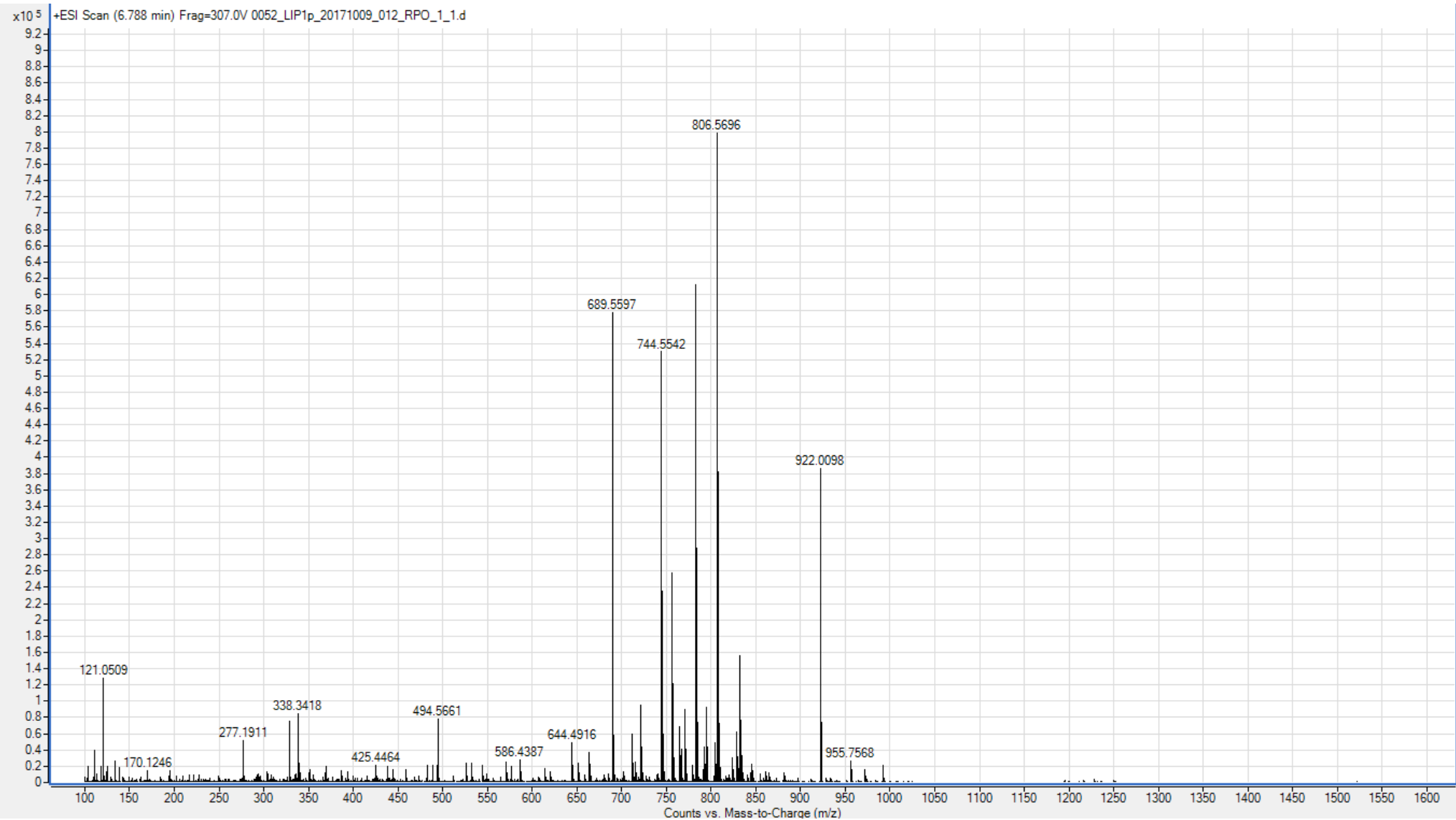


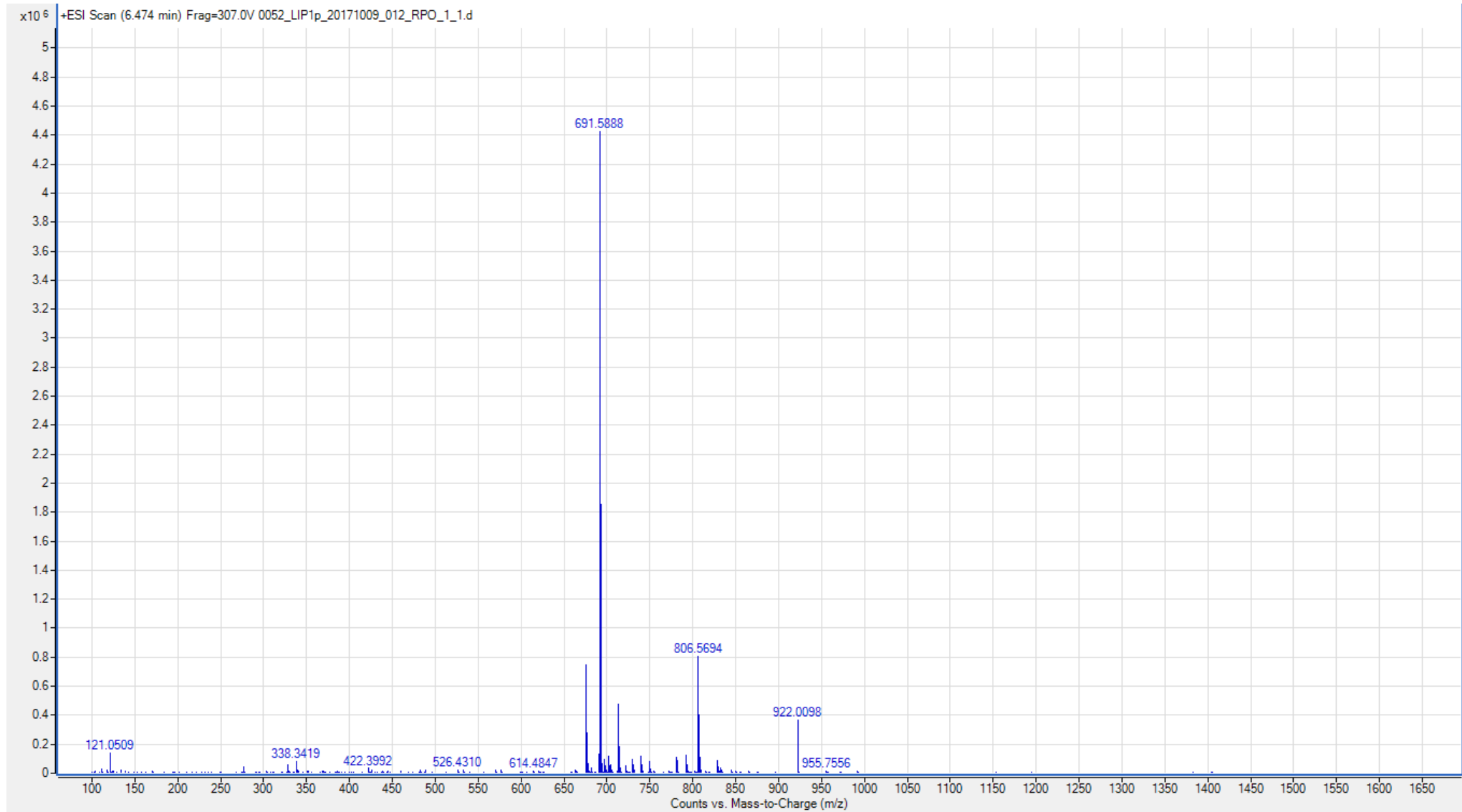
SUPPLEMENTARY TEXT 1

MS spectra for the Steno Diabetes
Center in-house library annotated lipids
for the pool sample

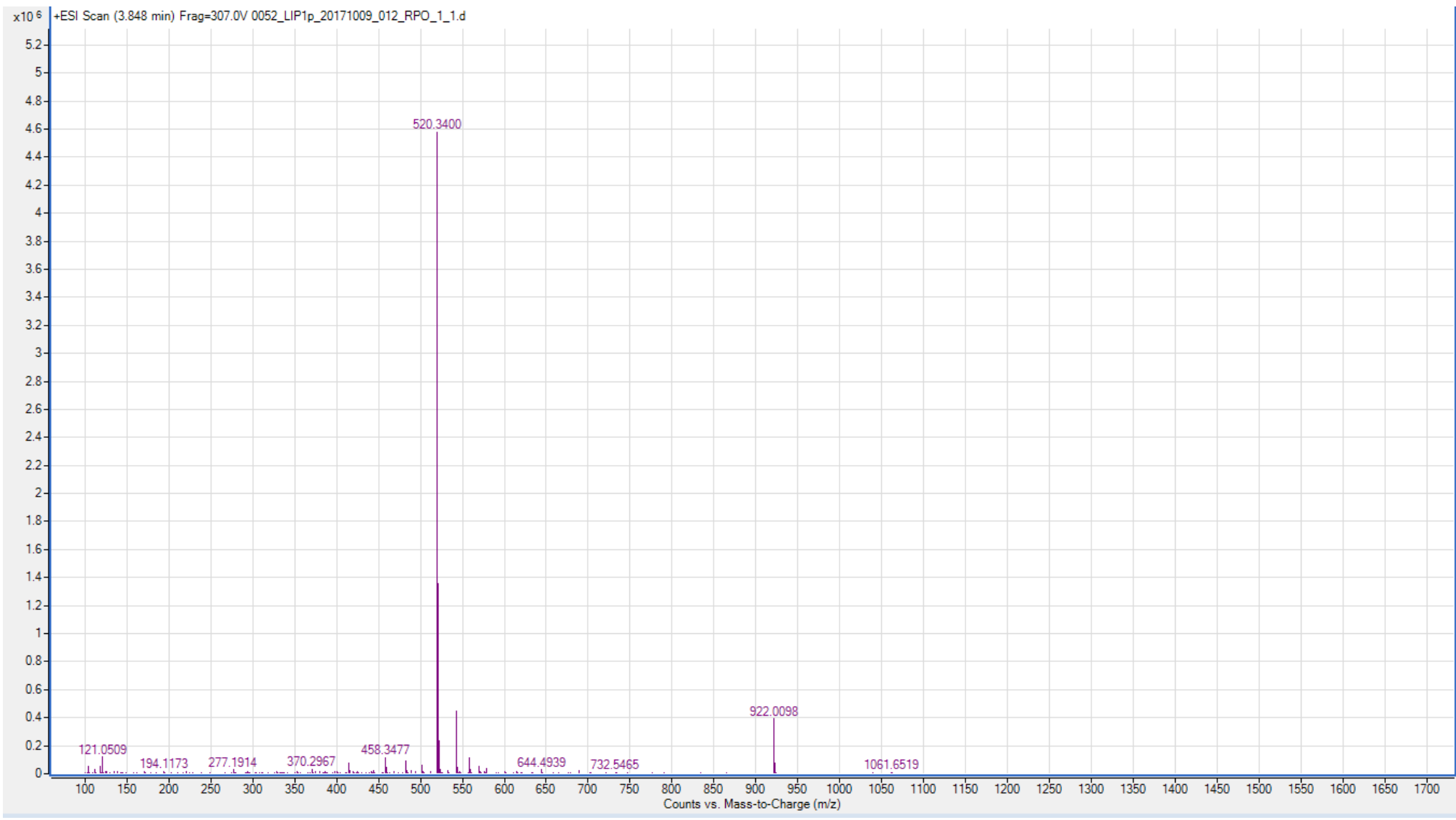
SM(d33:1): m/z= 689.56; RT=6.63



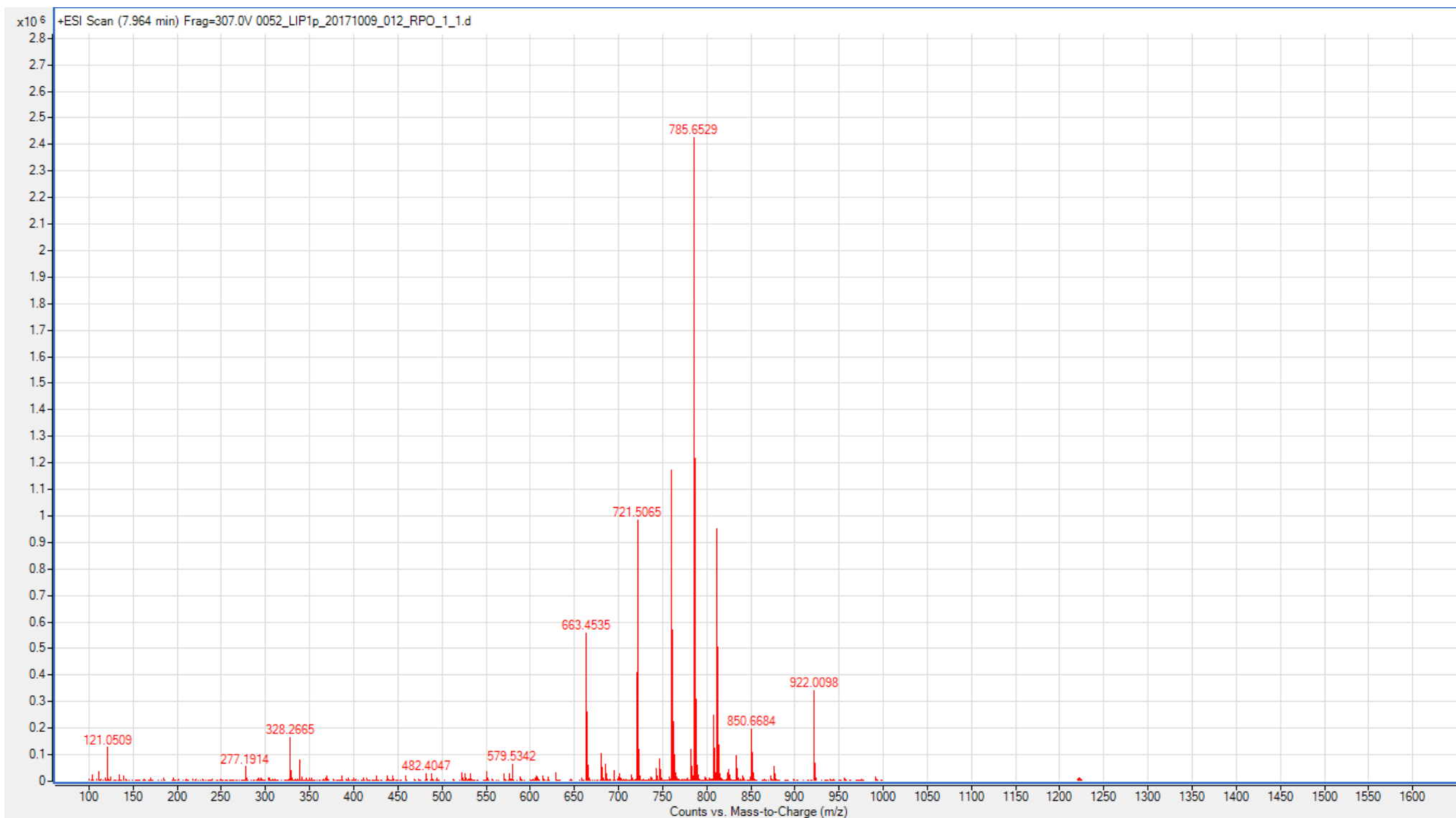
PC(O-36:2): $m/z=691.5884$; RT=6.4



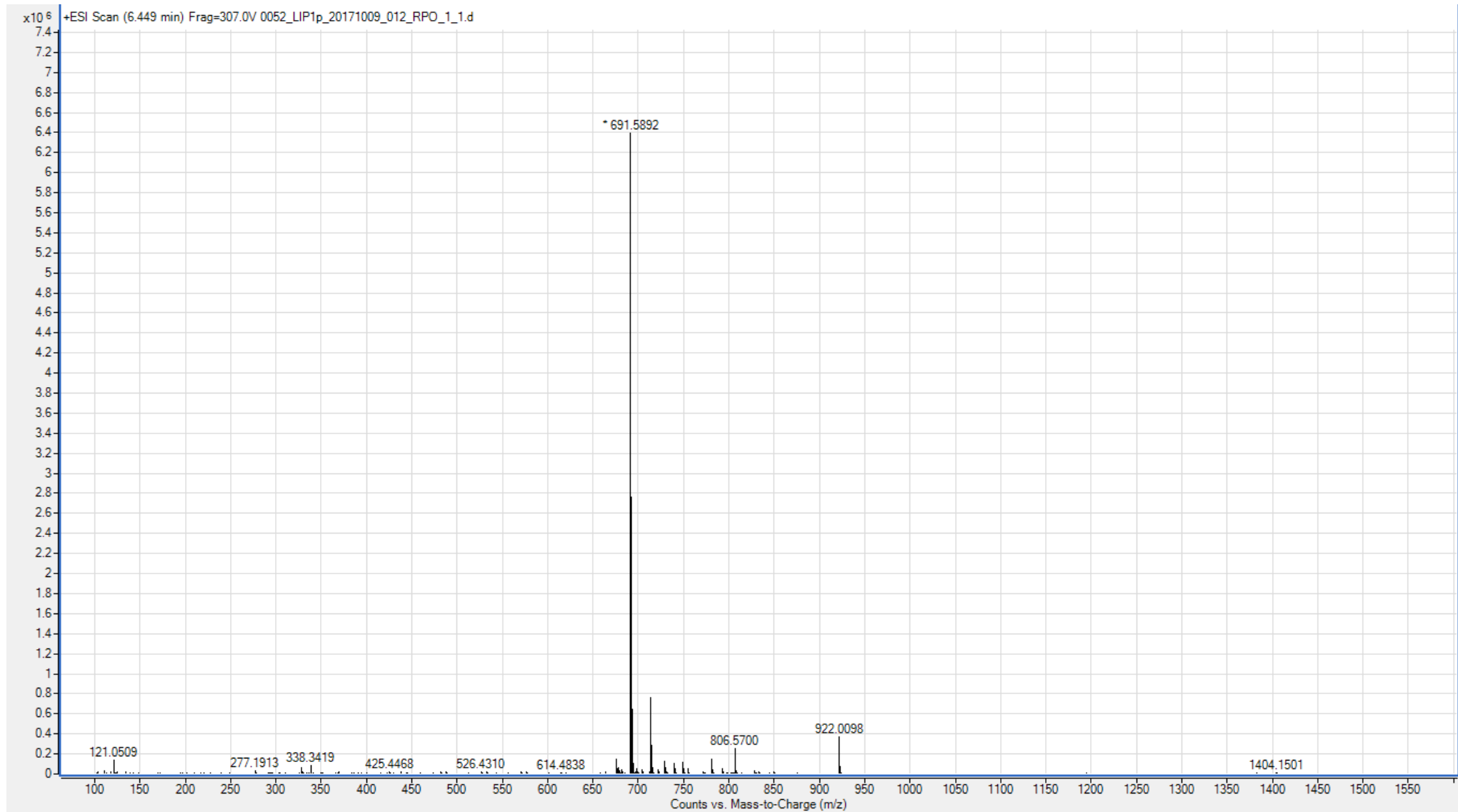
LPC(18:2): $m/z=520.34$; RT=3.79



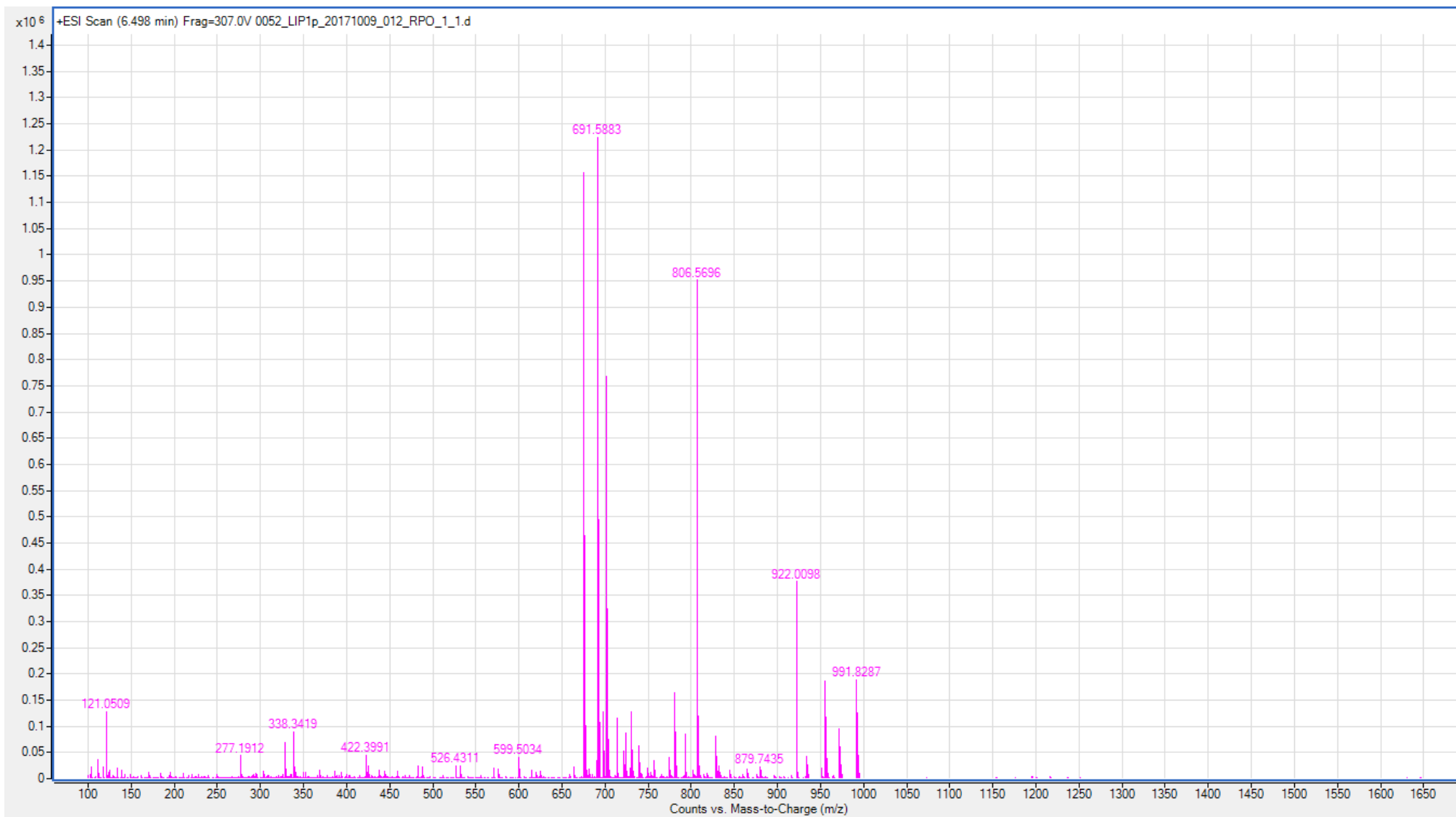
SM(d38:1): $m/z=759.64$; RT=7.82



SM(d32:1): m/z=675.54; RT=6.35



SM(d18:2/18:1): $m/z=727.57$; RT=6.4



PC(42:6): $m/z=862.63$; RT=7.11

