

OMTN, Volume 19

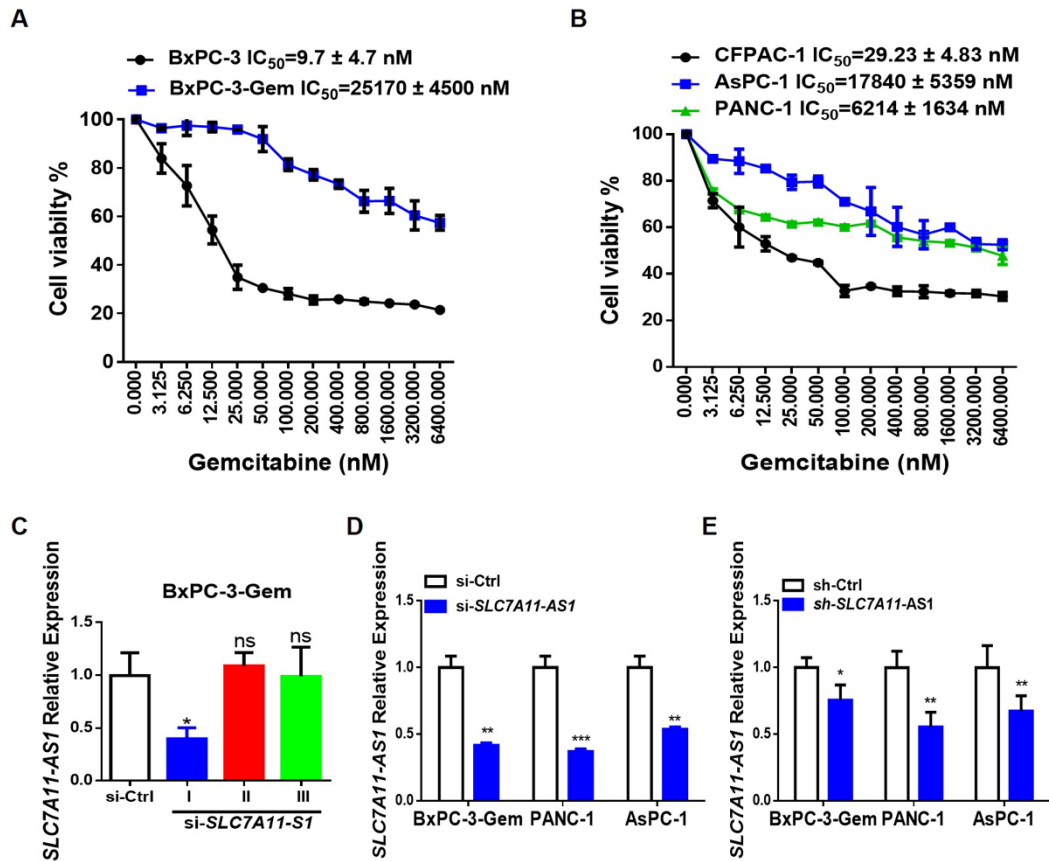
## Supplemental Information

### **lncRNA *SLC7A11-AS1* Promotes Chemoresistance by Blocking SCF <sup>$\beta$ -TRCP</sup>-Mediated Degradation of NRF2 in Pancreatic Cancer**

**Qingzhu Yang, Kai Li, Xuemei Huang, Chen Zhao, Yu Mei, Xinyuan Li, Lin Jiao, and Huanjie Yang**

**Supplementary Material**

**Figure S1**



**Figure S1.** Determination of *SLC7A11-AS1* knockdown efficiency in gemcitabine resistant PDAC cells. (A and B) MTT assay were performed to evaluate cells response to gemcitabine (72 hrs) in PDAC cell lines (n=3). (C-E) Efficiency of *SLC7A11-AS1* knockdown by siRNAs (C and D) or shRNA (E) in gemcitabine-resistant PDAC cell lines was verified by qRT-PCR (n=3). ns, not significant. \* $P<0.05$ , \*\* $P<0.01$ , \*\*\* $P<0.001$ .

**Table S1. Oligonucleotides and primers sequence**

| <b>siRNA</b>                            | <b>Sequence (5'-3')</b>  |
|---|--|
| si- <i>SLC7A11-AS1</i> I                | GCUCUCCAGACUCAGACU   |
| si- <i>SLC7A11-AS1</i> II               | GCCUUCAAAUUACACCUCU  |
| si- <i>SLC7A11-AS1</i> III              | CCAUAAACCAAGCAAGCCAU   |
| si-NRF2                                 | CCGGCATTTCACTAAACACAA  |
| <b>shRNA</b>                            | <b>Sequence (5'-3')</b>  |
| pLKO.1-puro<br>sh <i>SLC7A11-AS1</i>    | Sense:<br>CCGGGCTCTTCCAGACTCAGACTCTCG<br>AGAGTCTGAGTCTGGAAGAGCTTTTTG<br>Antisense:<br>AATTCAAAAAGCTCTTCCAGACTCA<br>GACTCTCGAGAGTCTGAGTCTGGAAGAGC |
| <b>Primers for Real-time RT-PCR</b>     | <b>Sequence (5'-3')</b>  |
| Oct4                                    | Forward: CGCCGTATGAGTTCTGTG<br>Reverse: GGTGATCCTCTTCTGCTTC  |
| Nanog                                   | Forward: AAGAACTCTCCAACATCCTGAAC<br>Reverse: CTTCTGCGTCACACCATT  |
| NRF2                                    | Forward: CACATCCAGTCAGAAACCAGTGG<br>Reverse: GGAATGTCTGCGCCAAAAGCTG  |
| HMOX1                                   | Forward: CCAGGCAGAGAATGCTGAGTTC<br>Reverse: AAGACTGGGCTCTCCTTGTTGC   |
| GCLM                                    | Forward: ACAGCGAGGAGCTTCATGATTGTAT<br>Reverse: GACATCTGGAACTCCCTGACC   |
| <i>SLC7A11-AS1</i>                      | Forward: AGCCTGGGTGATAAAGTG<br>Reverse: TAAGCCCTCAATGGATAG   |
| GAPDH                                   | Forward: TGCACCACCAACTGCTTAGC<br>Reverse: GGCATGGACTGTGGTCATGAG  |
| 18S                                     | Forward: AACTTTTCGATGGTAGTCGCCG<br>Reverse: CTTGGATGTGGTAGCCGTTT   |
| MT-RNR1                                 | Forward: CCTCCCAATAAAGCTAAAA<br>Reverse: GCTATTGTGTGTTTCAGATAT   |
| U99                                     | Forward: CCTCCTTTTCTTGCGGGGA<br>Reverse: CGTTTGAGGATAGAACCAGC  |
| <b>Primers for plasmid construction</b> | <b>Sequence (5'-3')</b>  |
| pCDNA3.1- <i>SLC7A11-AS1</i>            | Forward: CTAGCTAGCTCTGTCTGGCAA<br>GCGCCGCGCG<br>Reverse: CCGCTCGAGAGAGGAACAAGACTTT<br>ATTTAA   |
| HA- $\beta$ -TRCP1                      | Forward: AAACCTCGAGATGGACCCGGCCGAGG<br>CGGTGCT<br>Reverse: AAAGCGGCCGCTTATCTGGAGATG<br>TAGGTGTATG  |
| Flag- $\beta$ -TRCP1                    | Forward: AAACCTCGAGATGGACCCGGCCGAGG<br>CGGTGCT<br>Reverse: AAAGCGGCCGCTTATCTGGAGATGTA<br>GGTGTATG  |

|                                      |   |
|--------------------------------------|---|
| HA- $\beta$ -TRCP1-N                 | Forward: AAACTCGAGATGGACCCGGCCGAG<br>GCGGTGCT<br>Reverse: AAAGCGGCCGCTTAACTTCGGCA<br>GTGAATTCTCTGTA           |
| HA- $\beta$ -TRCP1-C                 | Forward: AAACTCGAGGAAACAAGCAAAGG<br>AGTTTACT<br>Reverse: AAAGCGGCCGCTTATCTGGAGAT<br>GTAGGTGTATG               |
| HA- $\beta$ -TRCP1-N- $\Delta$ F-box | Forward: TTGCAGAGAGATTTTCATCGAGAGAATGGTCAGG<br>ACAGAT<br>Reverse: GACCATTCTCTCGATGAAATCTCTCTGCAACATA<br>GGTTT |
| pEASY-T1-exon1-2                     | Forward: TCTGTCTGGCAAGCGCCGCGCG<br>Reverse: CTGAGTGTTTACAATGCTCGTG  |
| pEASY-T1-exon2-3                     | Forward: GGAAAAACAACATGAACTGTTC<br>Reverse: TTGGTTATGGAGTCTGAGAA  |
| pEASY-T1-exon3                       | Forward: GCTCGCTGCTTTCTGAAGGACA<br>Reverse: TTGGTTATGGAGTCTGAGAA  |
| pEASY-T1-exon1-3                     | Forward: TCTGTCTGGCAAGCGCCGCGCG<br>Reverse: TTGGTTATGGAGTCTGAGAA  |
| pEASY-T1-exon4-7                     | Forward: GCACACCTGGATGATATCAA<br>Reverse: AGAGGAACAAGACTTTATTTAA  |
| ISH Probe (pEASY-T1)                 | Forward: CACATCTGCCCAAGCAATC<br>Reverse: CTGTAAGATAATCTAGAAGGAGAAG  |

---