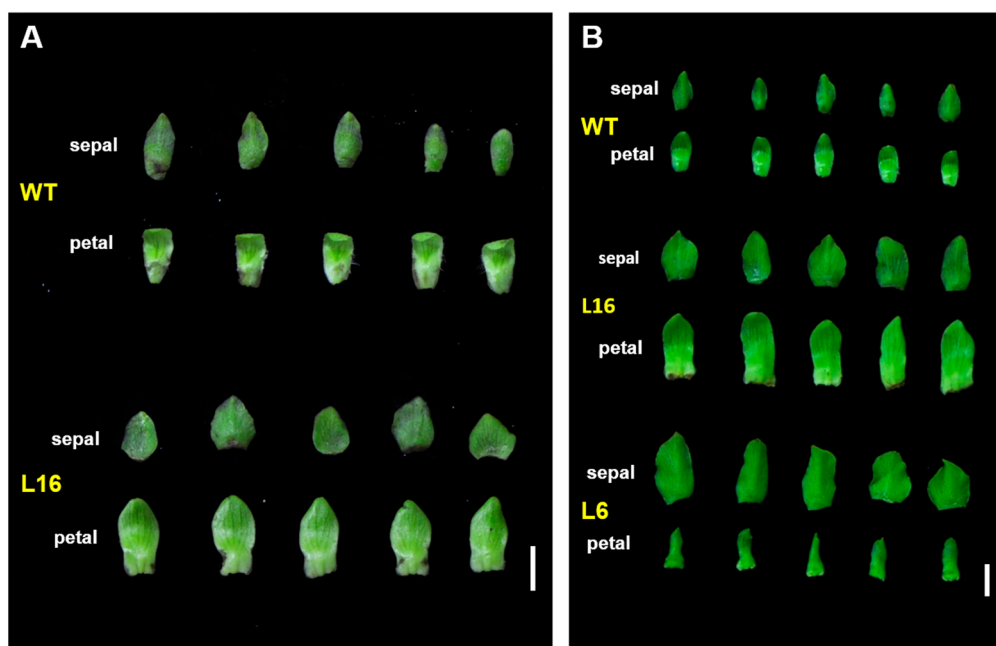
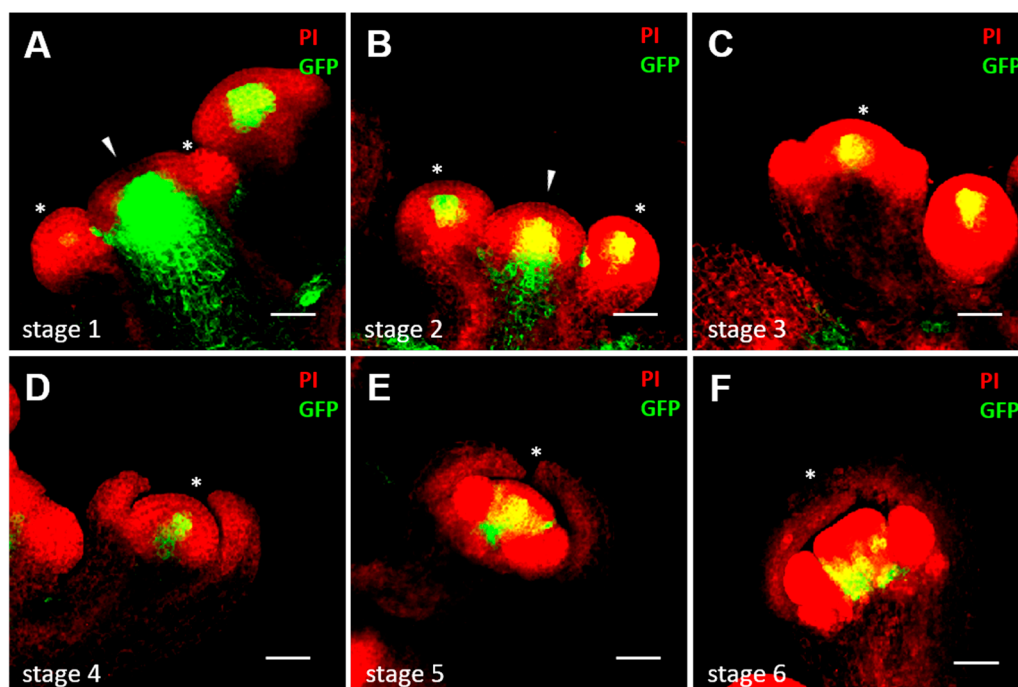


Supplementary Material



**Figure S1.** The sepals and petals of transgenic *Jatropha* developed abnormally. (A) Sepals and petals from the male flowers of WT and L16. (B) Sepals and petals from the female flowers of WT and the bisexual flowers of L16 and L6; scale bars = 5 mm.



**Figure S2.** The central regions of the floral primordium in *Arabidopsis* showed strong cytokinin signalling. (A–F) Longitudinal section of floral primordia of the *TCSn:GFP* transgenic *Arabidopsis* stained by propidium iodide (PI) (red) from stage 1 (A) to stage 6 (F). Asterisk, floral primordium; arrowhead, inflorescence meristem; scale bars = 30 μm.

**Table S1.** List of primers used in the qRT-PCR analysis.

<b>Gene</b>	<b>Forward</b>	<b>Reverse</b>
<i>AtIPT4</i>	5'-TCGCTGAGTTCCACCGCTCTAAG-3'	5'-AGGGTCCCATTATCCATGTCATTG-3'
<i>JcActin</i>	5'-CTCCTCTCAACCCCAAAGCCAA-3'	5'-CACCAGAATCCAGCACGATACCA-3'
<i>JcAHK2</i>	5'-TAGCGAGAAACTGGGATTTAGCA-3'	5'-TTCGTGATTGGCTTATTAGTGGG-3'
<i>JcARR3</i>	5'-CAGTTGCTGCTCATTTCATTCGTC-3'	5'-ATCTCCTTCGCCGTCGCCTTTA-3'
<i>JcAP3</i>	5'-AGCCCTACAACATCGACAAA-3'	5'-TCCAGACTCCTCATCTCGTC-3'
<i>JcPLIM2b</i>	5'-AGGGAGCTATACCCATGTCC-3'	5'-CATCTGCCAACCCAAACAAAA-3'
<i>JcAGL1</i>	5'-TTTTGCAAGCGCAGAAATGG-3'	5'-CCTGATTGCCTGCGTAGTT-3'