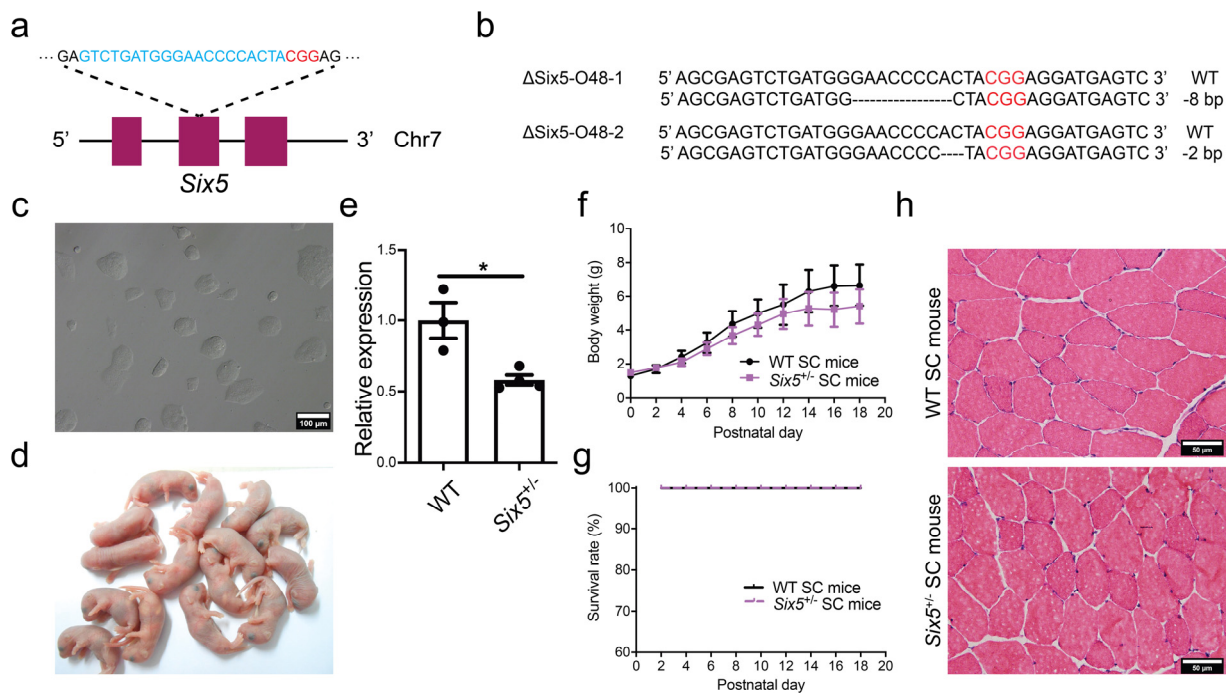


## Supplementary information, Figure S2



**Fig. S2** Generation of *Six5*<sup>+/-</sup> SC mice through ICAHCI of haploid cells carrying mutant *Six5*. **a** Schematic of the sgRNA targeting *Six5*. **b** Sequences of the *Six5* gene in two mutant cell lines ( $\Delta$ Six5-O48-1 and  $\Delta$ Six5-O48-2). **c** Phase-contrast image of  $\Delta$ Six5-O48-1 cell line. Scale bar, 100  $\mu$ m. **d** Newborn SC pups generated from  $\Delta$ Six5-O48-1 cells. **e** Transcription analysis of *Six5* in *Six5*<sup>+/-</sup> ( $n = 4$ ) and WT ( $n = 3$ ) SC mice. Unpaired Student's *t*-test, \* $P < 0.05$ . **f** Body weight analysis of *Six5*<sup>+/-</sup> and WT SC mice ( $n > 4$  per group, means  $\pm$  SD). **g** Survival curves of *Six5*<sup>+/-</sup> and WT SC mice ( $n > 4$  per group). **h** Histological analysis of TA muscles from *Six5*<sup>+/-</sup> and WT SC mice. Scale bars, 50  $\mu$ m.