

Supplementary information, Figure S3

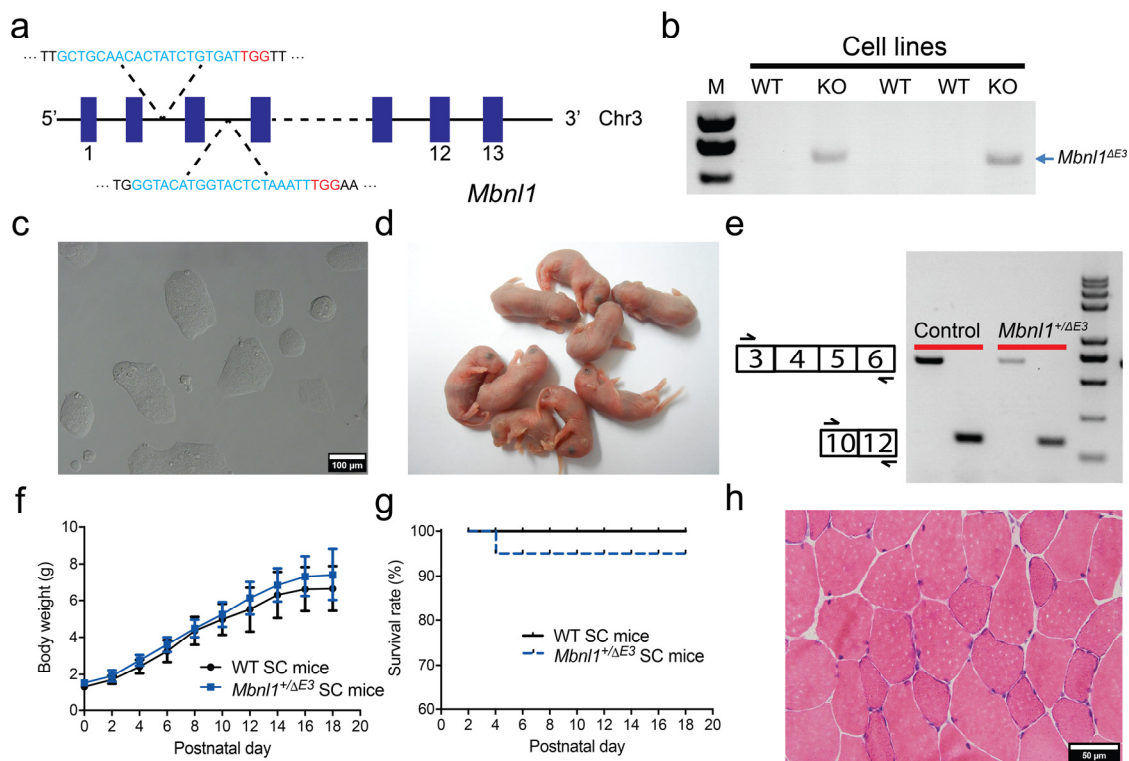


Fig. S3 Generation of *Mbn1*^{+ΔE3} SC mice through ICAHCI of haploid cells carrying mutant *Mbn1*. **a** Schematic of two sgRNAs for removing exon 3 of *Mbn1*. **b** Genotyping analysis of *Mbn1*^{ΔE3}-O48 cell lines. **c** Phase-contrast image of *Mbn1*^{ΔE3}-O48-2 cells. Scale bar, 100 μm. **d** Newborn SC pups generated from *Mbn1*^{ΔE3}-O48-2 cells. **e** RT-PCR of *Mbn1* in skeletal muscles from *Mbn1*^{+ΔE3} and WT SC mice. **f** Body weight analysis of *Mbn1*^{+ΔE3} and WT SC mice ($n > 8$ per group, means \pm SD). **g** Survival curves of *Mbn1*^{+ΔE3} and WT SC mice ($n > 8$ per group). **h** Representative image of H&E staining of TA muscles from *Mbn1*^{+ΔE3} SC mouse. Scale bar, 50 μm.