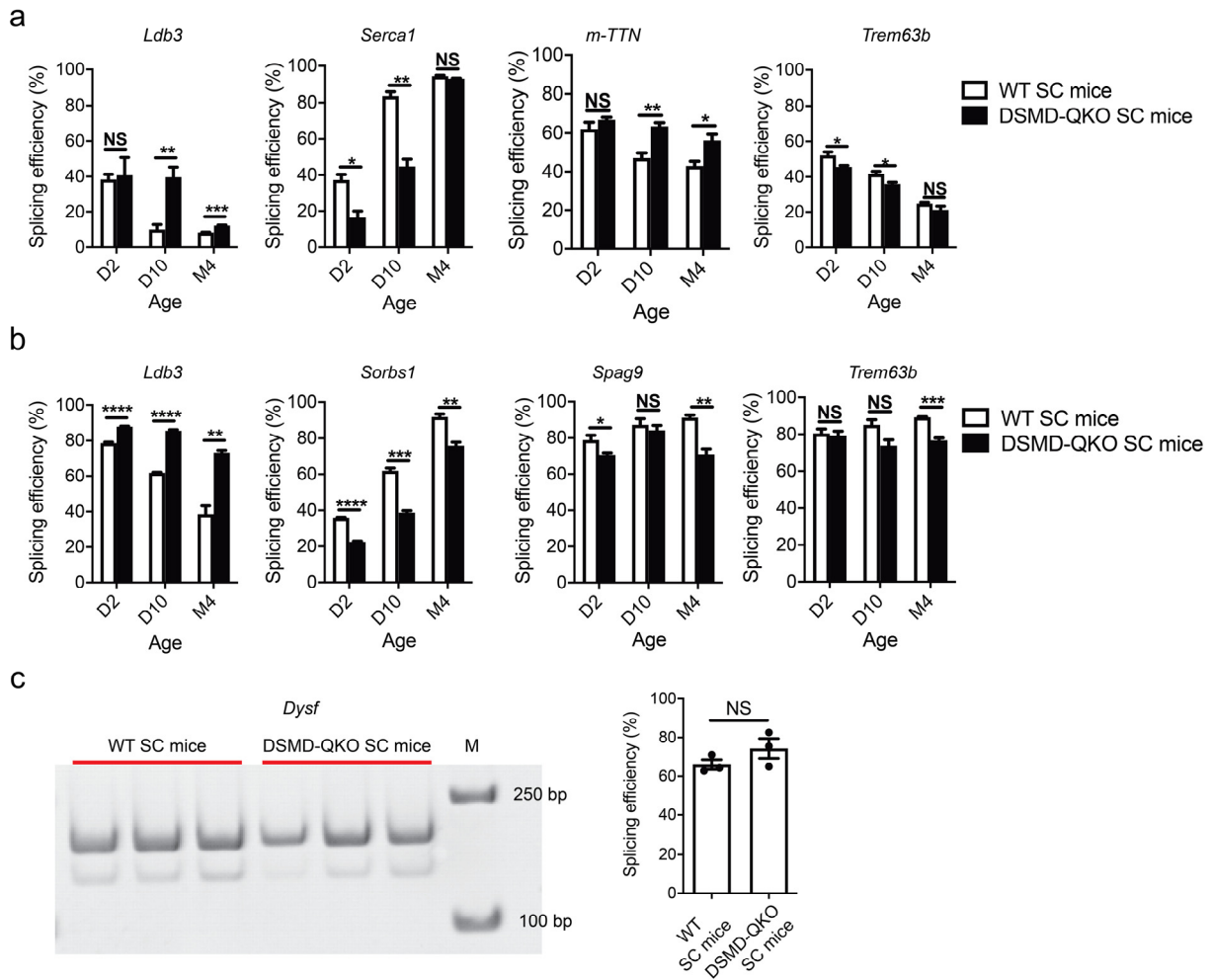


## Supplementary information, Figure S8



**Fig. S8** DM1-associated mis-splicing in DSMD-QKO SC mice. **a** Splicing efficiency of four target pre-mRNAs in TA muscle of QKO and WT SC mice. Unpaired Student's *t*-test, \* $P < 0.05$ , \*\* $P < 0.01$ , \*\*\* $P < 0.001$ . **b** Splicing efficiency of four target pre-mRNAs in cardiac muscle of QKO and WT SC mice. Unpaired Student's *t*-test, \* $P < 0.05$ , \*\* $P < 0.01$ , \*\*\* $P < 0.001$ , \*\*\*\* $P < 0.0001$ . **c** Splicing efficiency of *Dysf* that is not changed in muscle of human DM1 patients in TA muscle of DSMD-QKO SC mice and WT SC mice.