

Supplementary information, Figure S9

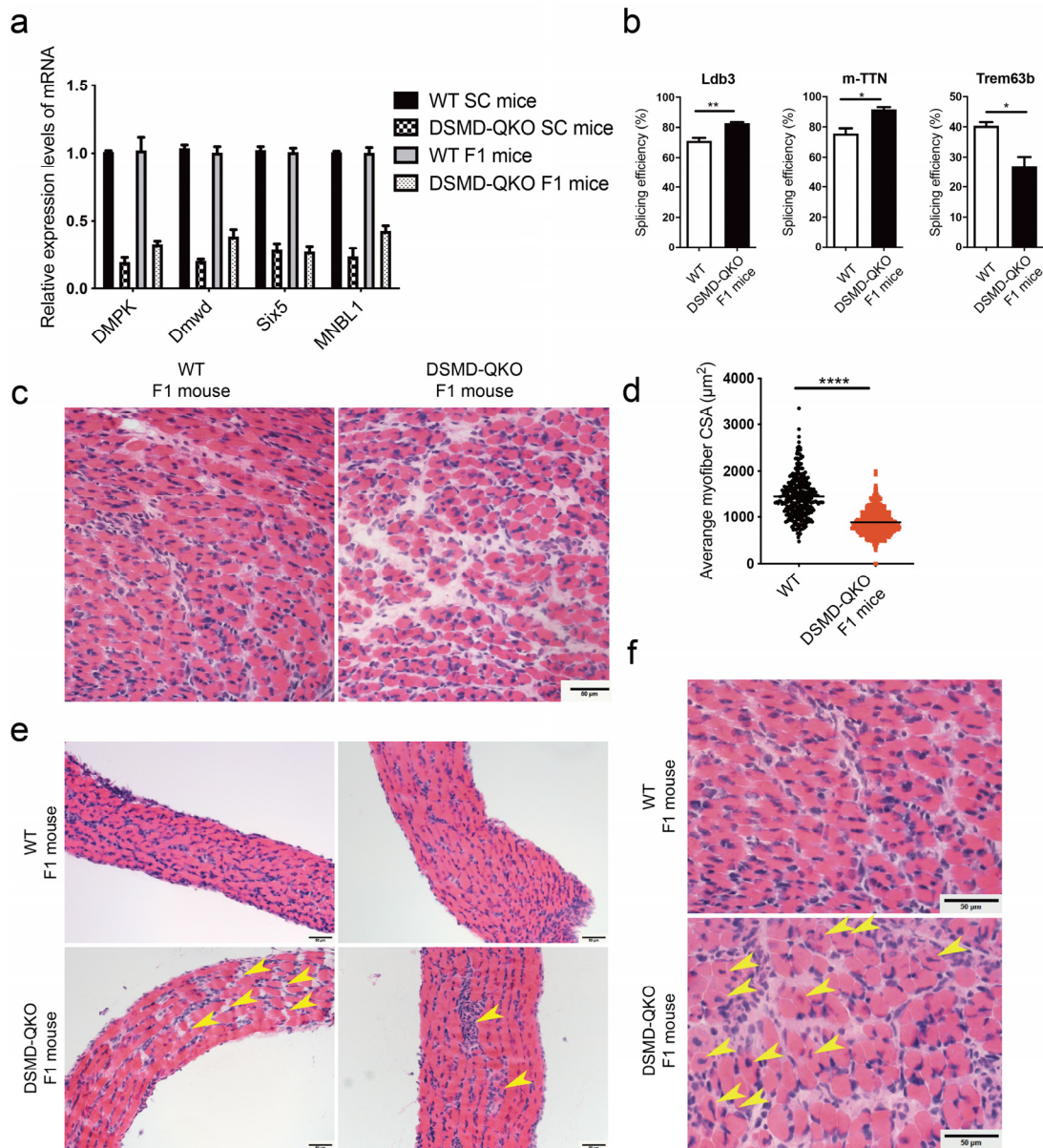


Fig. S9 Phenotype analysis of QKO F1 mice. **a** Relative mRNA expression levels of target genes in QKO SC and F1 mice. **b** Splicing efficiency of three target pre-mRNAs in TA muscle of QKO and WT F1 mice. Unpaired Student's *t*-test, * $P < 0.05$, ** $P < 0.01$. **c** H&E staining of TA muscle sections from DSMD-QKO and WT F1 mice (P0). Scale bar, 50 μm . **d** Myofiber CSA analysis in QKO F1 mice (P0) ($n = 3$ per group). Unpaired Student's *t*-test, **** $P < 0.0001$. **e**

Representative images of diaphragm in QKO F1 mice (P0). Yellow arrows indicate nuclear clumps (bottom right) and loose construction (bottom left) in diaphragm. Scale bars, 50 μm . **f**

Representative images of myofibers with central nuclei from TA muscle in QKO F1 mice (P0).

Yellow arrows indicate the myofibers with central nuclei. Scale bars, 50 μm .