

SUPPLEMENTAL MATERIAL

CIRCRES/2019/315829/Final

Yue Y et al.

EXPANDED METHODS

EPC Isolation:

Bone marrow extracted from the femurs, tibiae and hip-bones of 8-10-week-old C57BL/6J or IL-10 knockout mice were stained with labeled antibodies against lineage markers (CD3e(145-2C11), CD11b(M1/70), B220(RA3-6B2), Ter119(Ly76), Ly6G/C(RB6-8C5)) Sca-1 (D7) and CD31 (MEC13.3), then sorted to retain lineage-negative cells on a FACS Aria-II (BD Biosciences). Sorted cells were cultured in phenol red-free endothelial cell basal medium-2 (EBM-2, Clonetics) supplemented with exosome-free 10% FBS, vascular endothelial growth factor (VEGF)-A, fibroblast growth factor-2, epidermal growth factor, insulin-like growth factor-1, ascorbic acid, and antibiotics. Cells were cultured at 37 °C with 5% CO₂ in a humidified atmosphere. After 4 days in culture, non-adherent cells were removed by washing with PBS, new medium was applied, and the culture was maintained through day 7. Notice that for exosome study, all Fetal Bovine Serum (FBS) used in cell culture are Exosome depleted FBS (ThermoFisher Scientific A2720801).

Exosome Isolation, characterization and proteomics

The exosome isolation, purification and storage was performed as previously described and referenced in main text methods. Collected exosomes were suspended in Phosphate-Buffered Saline (PBS), aliquoted and stored at -80 °C or used immediately for experiments. The size and shape of exosomes were observed by electron microscopy supported by Electron Microscopy Resource Laboratory (EMRL) at University of Pennsylvania. Exosomes docking on Dynabeads (Sigma) coated with anti-mouse CD63 and CD81 was used to check exosome surface markers by flow cytometry. Three exosome markers, including HSP70(HSP 70/HSC 70 Antibody (W27): sc-24), CD63(CD63 Antibody (H-193): sc-15363) and Flotillin-1(Flotillin-1 Antibody (K-19): sc-16640) were verified by western blotting with antibodies from Santa Cruz. Exosome protein level was quantified with Pierce BCA Protein Assay Kit (Thermo Fisher) as manufacturer's instructions. Exosome particle number was quantified by NanoSight running Nanoparticle Tracking Analysis (NTA) software. The RNAs and proteins in exosomes were labeled and tracked by Exo-Glow (SBI) as manufacturer's instructions to check the delivery function of exosomes. 100ug each of WT and IL-10KO-EPC derived exosomes solved in PBS (duplicates in each group) were sent to SBI for Exo-RNA Next-Generation Sequencing according to manufacturer's instructions. Deep sequencing data were analyzed with Maverix software provided by SBI. 50ug of WT and IL-10KO-EPC derived exosomes solved in PBS were sent to Quantitative Proteomics Resource Core (QPRC) in U Penn for mass-spectrometry to characterize and quantify proteins from exosomes.

Echocardiography

Mice were anesthetized with 2% isoflurane inhalation with an isoflurane delivery system (Viking Medical, Medford, NJ). Transthoracic two-dimensional M-mode echocardiogram was obtained

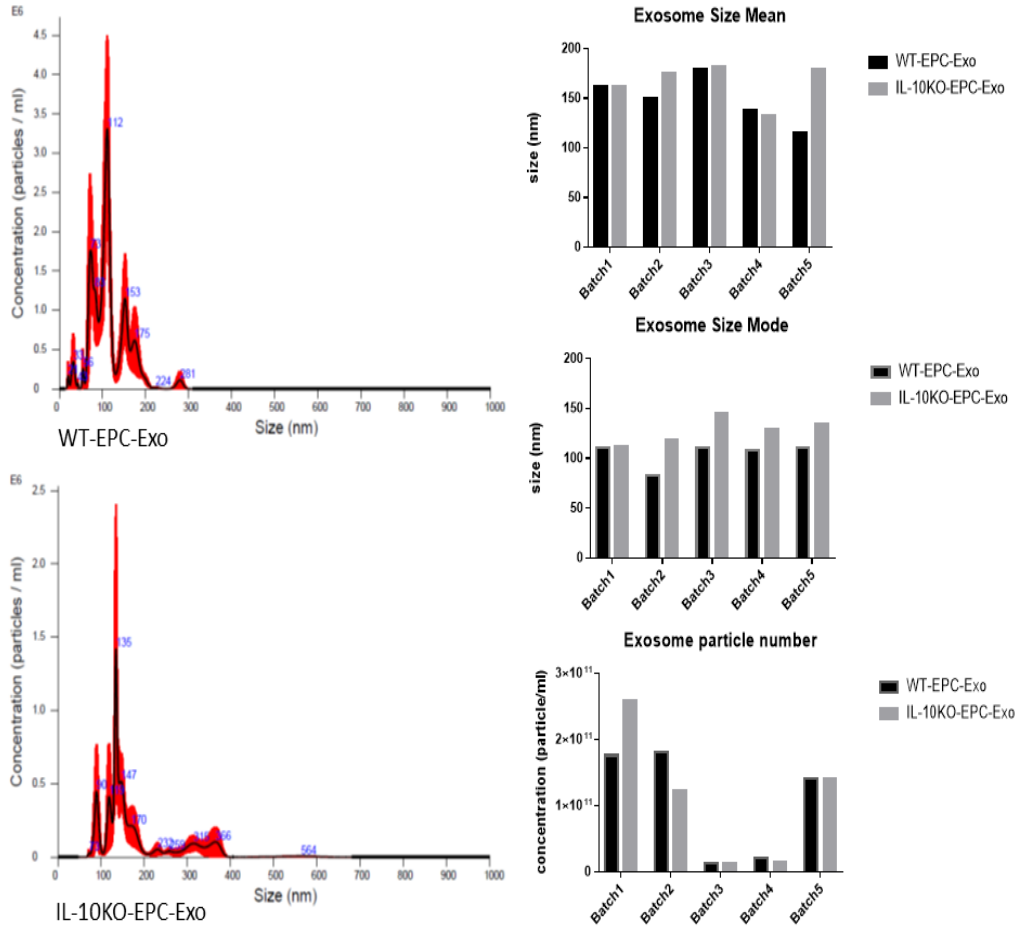
using Vevo 2100 (Visual Sonics, Toronto, Canada) Echocardiographic studies were performed before MI (baseline) and at 1, 2 and 4 weeks post-MI on mice anesthetized with a mixture of 1.5% isoflurane and oxygen (1 L/min). The internal diameter of the LV was measured in the short-axis view from M-mode recordings; ejection fraction (EF) and fractional shortening (FS) were calculated using corresponding formulas as previously described

Morphometric studies: Mice were euthanized by an overdose of Avertin (200 mg/kg BW, i.p.). The hearts were fixed by perfusion with 10% buffered formalin. Hearts were then cut into 3 slices (apex, mid-LV and base) and paraffin embedded. Morphometric analysis including infarct size, wall thickness and percent fibrosis was performed on Masson's trichrome stained tissue sections using Image-J software (NIH, version 1.30, <http://rsb.info.nih.gov/ij/>). Fibrosis area was measured to determine percent fibrosis. Analysis was performed on minimum of 5-6 consecutive sections from each animals.

Quantitative Real-Time Polymerase Chain Reaction (qRT-PCR) of miR-375

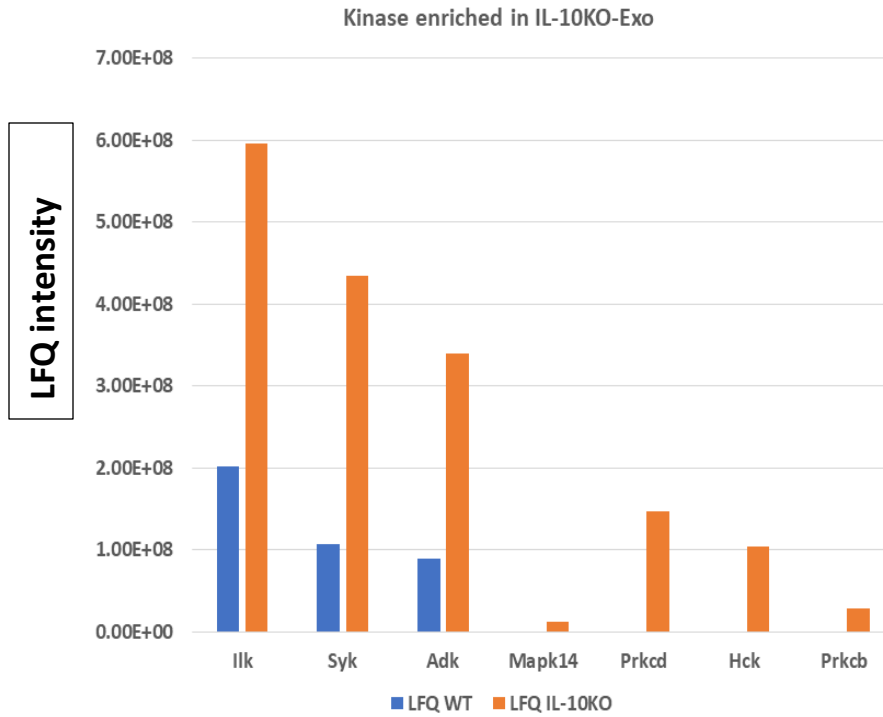
Expression levels of miR-375 were measured using quantitative miRNA stem loop RT-PCR technology (TaqMan miRNA assays; Applied Biosystems) as previously described¹. Transcription was performed using TaqMan miRNA RT kit (Applied Biosystems) according to the manufacturer's instructions. Real-Time PCR was performed on an Applied Biosystems 770 Step One Plus using the TaqMan Universal PCR Master Mix, No AmpErase UNG (Applied Biosystems) according to the manufacturer's instructions. The TaqMan specific primer 18S or U6 small nucleolar RNA (Gene Expression Macro; Bio-Rad) was used for normalization with the threshold delta-delta cycle method.

SUPPLEMENTAL FIGURES AND LEGENDS

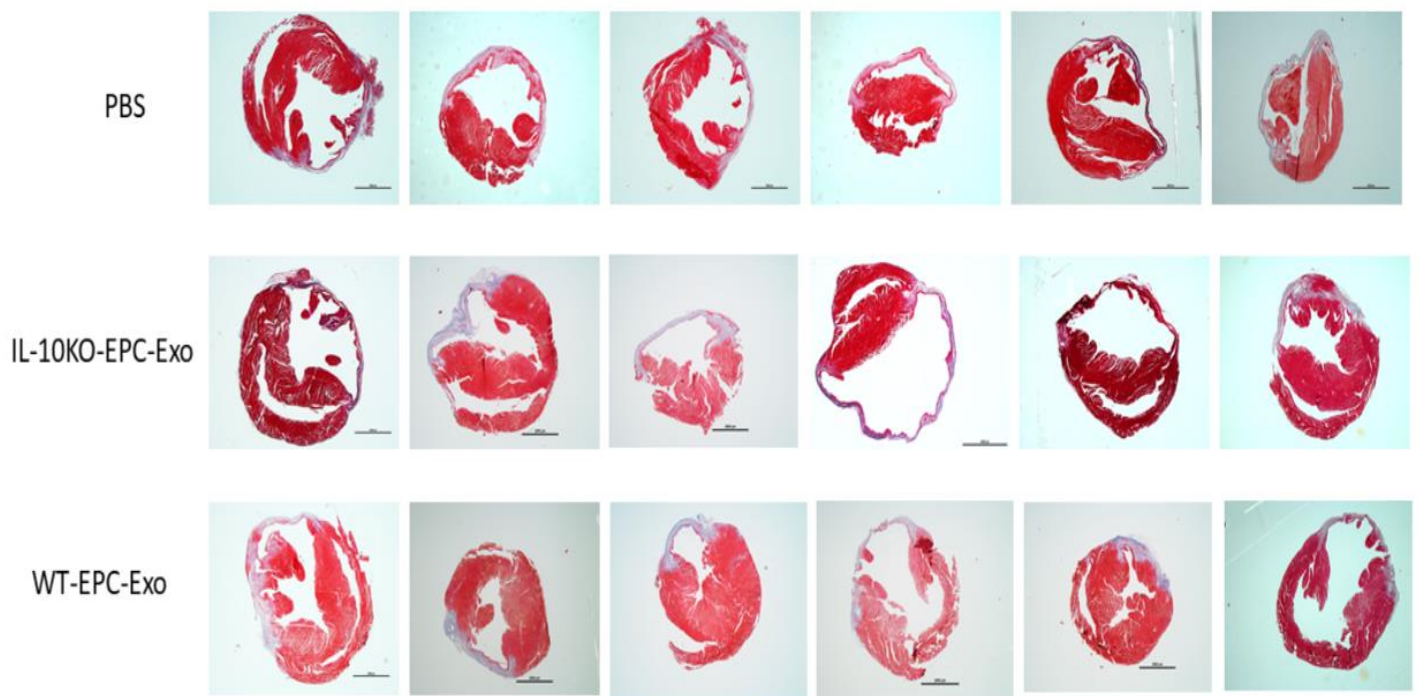


Online Figure I. Characterization of exosomes derived from different groups of EPCs.

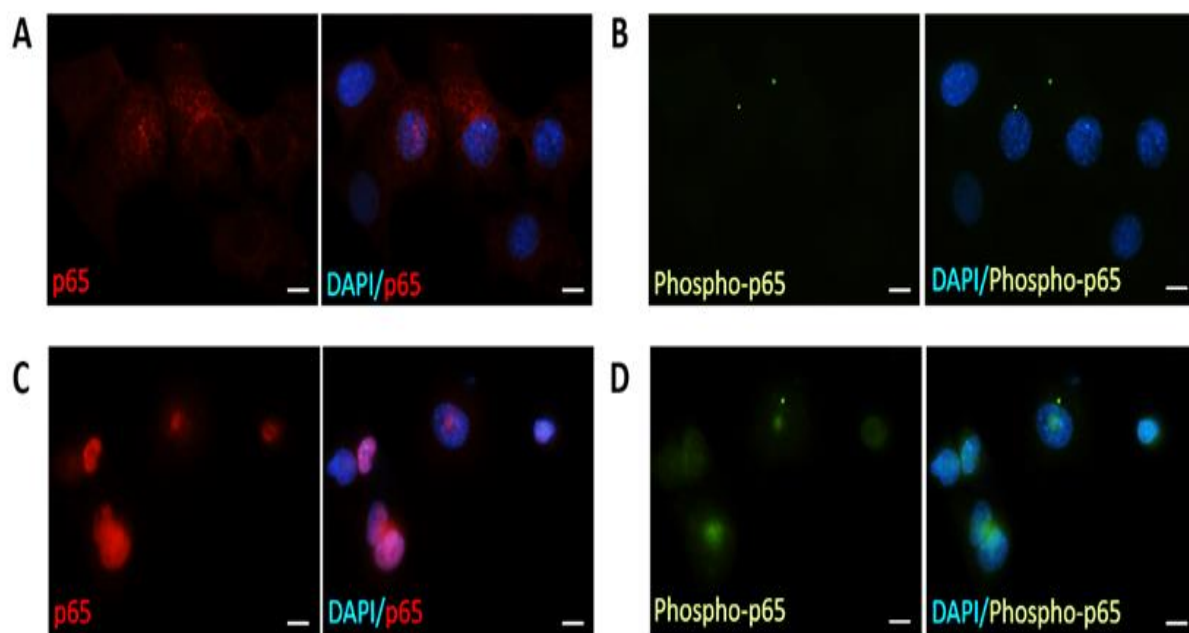
Nanosight analysis showed no significant difference in particle size and size range between WT and IL-10KO EPC derived exosomes. The particle number yield from EPCs varied from batch to batch isolations, however no obvious trend or difference was observed between WT and IL-10KO-EPC group isolations in a particular experiment.



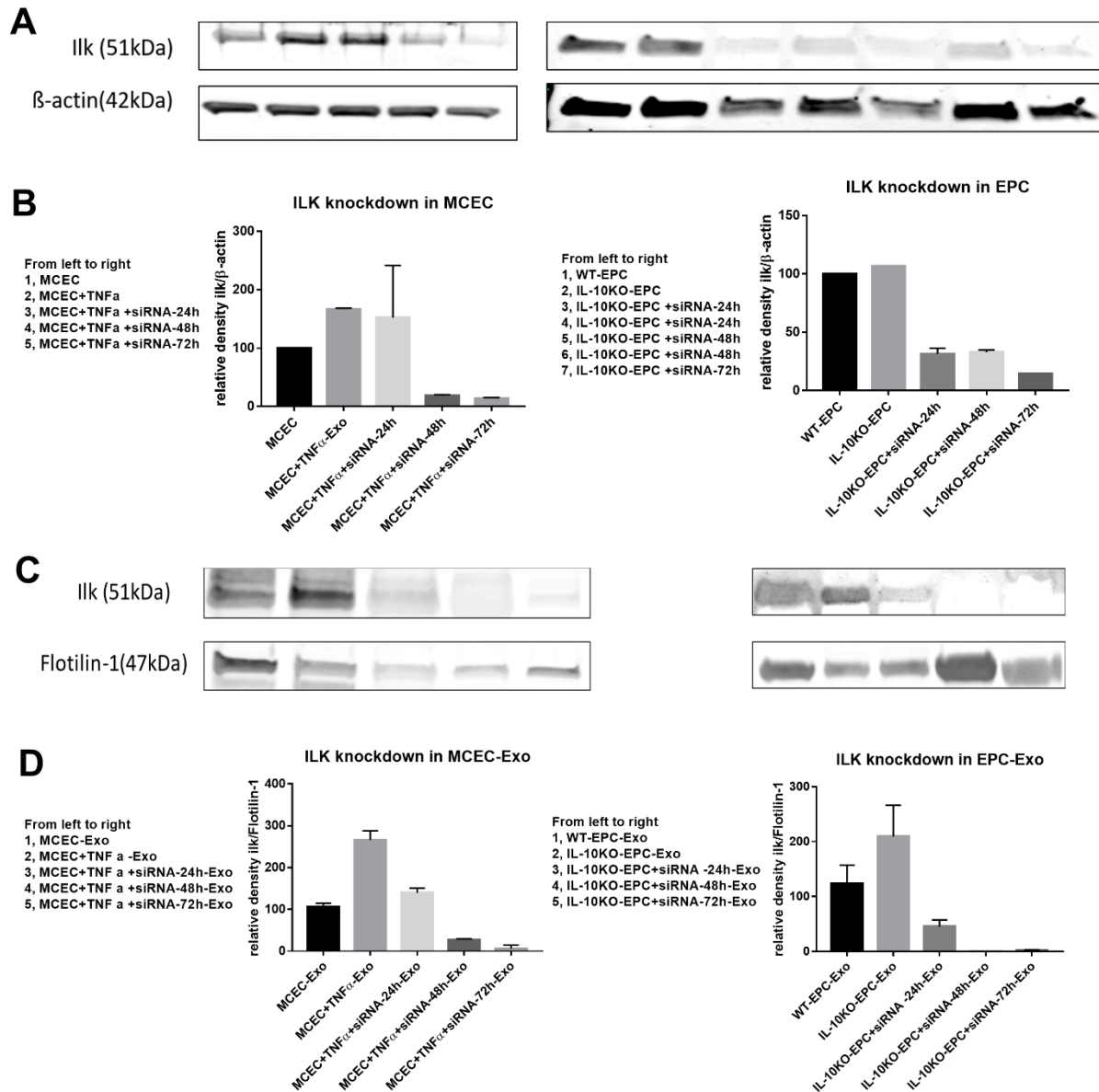
Online Figure II: Protein Kinases enriched in IL10-KO-EPC exosomes. Among protein kinases, ILK has highest protein levels in exosomes derived from IL10-KO EPCs. Data is graphed as Label-free quantification (LFQ intensity), showing relative amount of protein in 2 different biological samples (WT and IL10KO-EPC exosomes).



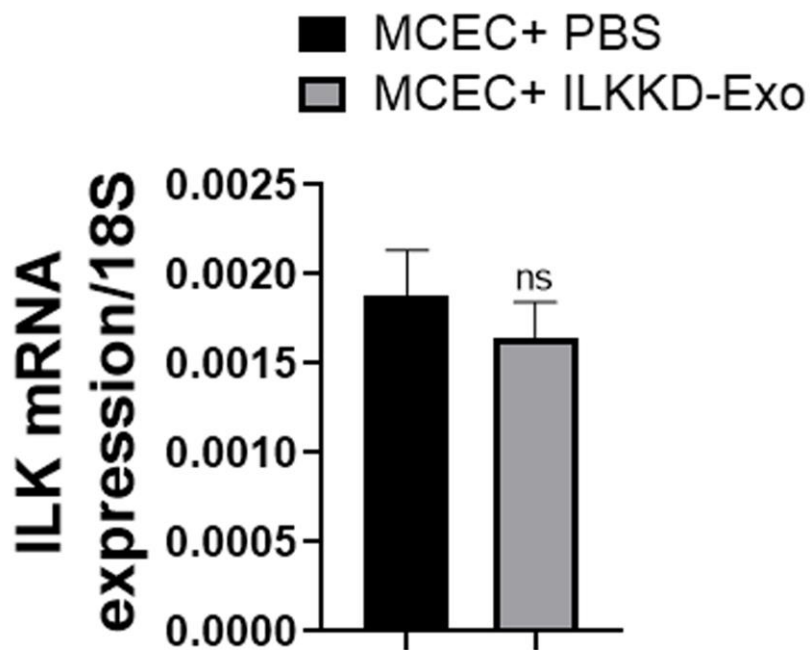
Online Figure III. Examples of Masson trichrome staining for the measurement of infarct size 4 weeks after MI and exosome treatments.



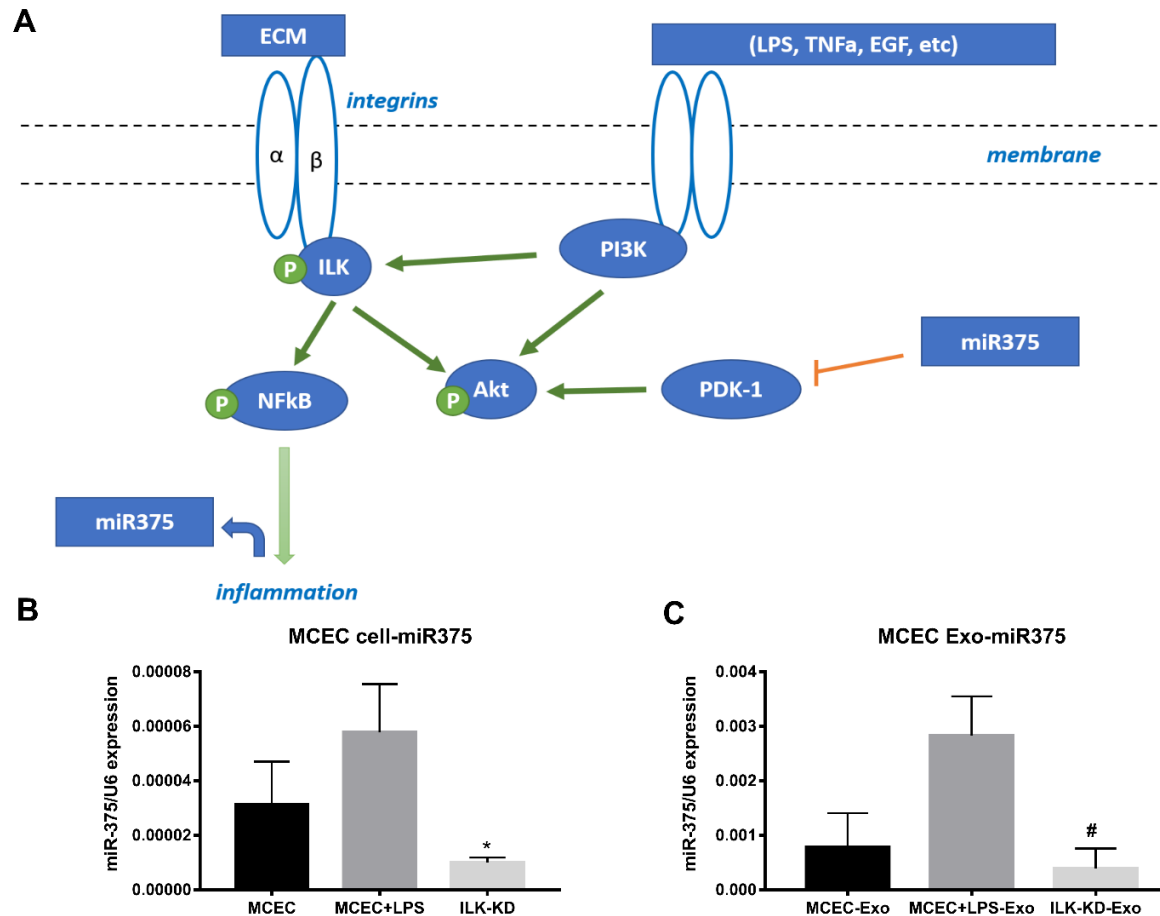
Online Figure IV. ILK delivered via exosome was functional in recipient cells: In order to prove MCEC derived exosomes contain functional proteins, MCECs were treated with MCEC-Exo or MCEC+TNF α -Exo for 15min, p65 and phospho-serine536-P65 were stained and observed. **A and B:** MCEC- Exo did not activate p65 nuclear translocation and phosphorylation. **C and D:** ILK enriched MCEC+TNF α -Exo activated p65 nuclear translocation and phosphorylation (scale bar, 10 μ m).



Online Figure V. ILK Knockdown efficiency in MCEC and EPC (both in cell and in exosome): siRNA strategy was used for ILK knockdown. **A to D**, ILK knockdown efficiency was around 70% to 90% in both MCEC cells and exosomes.



Online Figure VI: ILKKD exosome do not alter ILK mRNA in recipient cells: To rule out that siRNA used to knockdown ILK is somehow carried in the exosome and may directly alter ILK expression, MCECs were treated with exosomes from ILKKD cells for 24 hours before ILK mRNA was analyzed by RT-PCR. No significant changes in ILK mRNA expression were detected.



Online Figure VII: ILK knockdown decreased enrichment of miR-375 in inflamed cells and exosomes: **A**, ILK activates the NFκB pathway and induces downstream miR-375 expression. **B and C**, MCEC stimulated with 100ng/ml LPS for 24 hours showed enrichment of miR-375 both in cells and exosomes. MCEC treated with siRNA-ILK for 24 hours then stimulated with 100ng/ml LPS for another 24 hours showed decreased miR-375 expression both in cells and exosomes. *vs MCEC+LPS (*p<0.05); #vs MCEC+LPS-Exo (#p<0.05).

SUPPLEMENTAL TABLES

Online Table I: Mass spectrometry raw data on differential protein expression in exosomes from WT vs. IL10-KO EPCS.

Protein name	LFQ intensity WT	LFQ intensity IL_10KO
Lactadherin	5.63E+10	5.50E+10
Apolipoprotein E	1.79E+10	1.32E+10
Actin, cytoplasmic 1;Actin, cytoplasmic 1, N-terminally processed	1.24E+10	3.72E+10
Platelet glycoprotein 4	1.20E+10	1.85E+10
Histone H4	1.20E+10	2.51E+10
Programmed cell death 6-interacting protein	1.12E+10	1.07E+10
Glutathione peroxidase;Phospholipid hydroperoxide glutathione peroxidase, mitochondrial;Phospholipid hydroperoxide glutathione peroxidase, nuclear	1.06E+10	3.08E+09
Prolow-density lipoprotein receptor-related protein 1;Low-density lipoprotein receptor-related protein 1 85 kDa subunit;Low-density lipoprotein receptor-related protein 1 515 kDa subunit;Low-density lipoprotein receptor-related protein 1 intracellular domain	7.64E+09	1.03E+10
Fibronectin;Anastellin	6.92E+09	6.32E+09
Syntenin-1	6.67E+09	5.50E+09
Histone H2A;Histone H2A type 1-H;Histone H2A.J;Histone H2A type 1-K;Histone H2A type 1-F;Histone H2A type 3;Histone H2A type 1	6.60E+09	1.41E+10
Tubulin alpha-1B chain;Tubulin alpha-1C chain	5.62E+09	1.68E+10
Histone H2B;Histone H2B type 1-C/E/G;Histone H2B type 2-B;Histone H2B type 1-H;Histone H2B type 1-M;Histone H2B type 1-P;Histone H2B type 1-K;Histone H2B type 1-B;Histone H2B type 1-F/J/L;Histone H2B type 3-A;Histone H2B type 3-B;Histone H2B type 2-E;Histone H2B type 1-A	5.18E+09	1.50E+10
Macrophage metalloelastase	4.42E+09	3.69E+09
Tetraspanin-14	3.97E+09	6.76E+09
Clathrin heavy chain;Clathrin heavy chain 1	3.50E+09	4.37E+09
Galectin-3-binding protein	3.47E+09	4.47E+09
Tubulin beta-5 chain	3.47E+09	1.16E+10
Urokinase-type plasminogen activator;Urokinase-type plasminogen activator long chain A;Urokinase-type plasminogen activator short chain A;Urokinase-type plasminogen activator chain B	3.42E+09	3.10E+09
Heat shock cognate 71 kDa protein	2.86E+09	5.43E+09
Pyruvate kinase PKM	2.84E+09	1.23E+10

Glyceraldehyde-3-phosphate dehydrogenase	2.73E+09	6.49E+09
Alpha-2-macroglobulin;Alpha-2-macroglobulin 165 kDa subunit;Alpha-2-macroglobulin 35 kDa subunit	2.72E+09	4.39E+09
Integrin beta;Integrin beta-2	2.71E+09	1.28E+10
Ubiquitin-40S ribosomal protein S27a;Ubiquitin;40S ribosomal protein S27a;Ubiquitin-60S ribosomal protein L40;Ubiquitin;60S ribosomal protein L40;Polyubiquitin-B;Ubiquitin;Polyubiquitin-C;Ubiquitin;Ubiquitin-related 1;Ubiquitin-related 2	2.59E+09	3.60E+09
Immunoglobulin superfamily member 8	2.52E+09	2.51E+09
Annexin;Annexin A2	2.27E+09	3.76E+09
Integrin alpha-IIb;Integrin alpha-IIb heavy chain;Integrin alpha-IIb light chain	2.27E+09	1.10E+09
Integrin beta-1	2.24E+09	2.05E+09
Cathepsin B;Cathepsin B light chain;Cathepsin B heavy chain	2.18E+09	1.86E+09
Annexin A5	2.15E+09	3.72E+09
Lipoprotein lipase	2.00E+09	2.41E+09
Talin-1	1.99E+09	4.22E+09
Integrin beta-3	1.96E+09	7.90E+08
Integrin alpha-M	1.90E+09	1.66E+10
Histone H3;Histone H3.2	1.79E+09	1.13E+10
Elongation factor 1-alpha;Elongation factor 1-alpha 1	1.79E+09	5.58E+09
CD9 antigen	1.73E+09	1.80E+09
Aminopeptidase N	1.68E+09	2.17E+09
Filamin-A	1.46E+09	1.21E+09
Cation-dependent mannose-6-phosphate receptor	1.42E+09	7.25E+08
Guanine nucleotide-binding protein G(i) subunit alpha-2	1.41E+09	3.72E+09
Transitional endoplasmic reticulum ATPase	1.26E+09	8.92E+08
Tubulin alpha-4A chain	1.25E+09	3.88E+09
Lysozyme;Lysozyme C-2	1.13E+09	1.01E+09
Prosaposin	1.13E+09	1.80E+09
Annexin;Annexin A1	1.11E+09	4.95E+09
Tetraspanin;CD81 antigen	1.09E+09	1.14E+09
Annexin;Annexin A4	1.07E+09	6.51E+08
Granulins;Acrogranin;Granulin-1;Granulin-2;Granulin-3;Granulin-4;Granulin-5;Granulin-6;Granulin-7	1.06E+09	6.49E+08
Hemoglobin subunit alpha	1.06E+09	6.98E+09
Disintegrin and metalloproteinase domain-containing protein 10	1.05E+09	1.59E+09
Antithrombin-III	1.04E+09	1.12E+09
Ras-related protein Rap-1b	1.04E+09	1.54E+09
Transmembrane glycoprotein NMB	9.80E+08	1.03E+09
60S ribosomal protein L7	9.51E+08	2.10E+09

Collagen alpha-1(I) chain	9.32E+08	9.11E+08
Complement C1q subcomponent subunit B	9.25E+08	9.30E+08
Vimentin	9.20E+08	9.30E+08
Janus kinase and microtubule-interacting protein 3	9.19E+08	5.70E+08
Ribosomal protein S6 kinase alpha-3;Ribosomal protein S6 kinase;Ribosomal protein S6 kinase alpha-2	9.15E+08	9.28E+07
Peroxiredoxin-1	9.06E+08	5.64E+08
Haptoglobin;Haptoglobin alpha chain;Haptoglobin beta chain	8.75E+08	1.47E+09
Galectin;Galectin-9	8.73E+08	3.60E+09
Adenosylhomocysteinase	8.65E+08	1.75E+09
60S ribosomal protein L18	8.60E+08	6.66E+08
Major vault protein	8.50E+08	3.57E+08
H-2 class I histocompatibility antigen, D-B alpha chain	8.42E+08	1.61E+09
	8.40E+08	6.38E+08
Alpha-synuclein	8.30E+08	1.60E+08
60S ribosomal protein L7a	8.25E+08	6.89E+08
ADP-ribosylation factor 1;ADP-ribosylation factor 3;ADP-ribosylation factor 2	8.06E+08	1.78E+09
Integrin alpha-4	7.95E+08	1.08E+09
Complement C1q subcomponent subunit C	7.57E+08	1.01E+09
L-lactate dehydrogenase;L-lactate dehydrogenase A chain	7.44E+08	1.26E+09
	7.34E+08	3.22E+09
Galectin;Galectin-3	6.95E+08	8.83E+08
Tetraspanin;CD63 antigen	6.94E+08	3.48E+08
Tetraspanin;Tetraspanin-4	6.86E+08	1.27E+09
Heat shock protein HSP 90-beta	6.78E+08	1.64E+09
60S ribosomal protein L3	6.76E+08	1.04E+09
Ferritin;Ferritin light chain 1;Ferritin light chain 2	6.76E+08	7.22E+08
Serotransferrin	6.73E+08	5.55E+08
Annexin;Annexin A6	6.71E+08	1.51E+09
Proteasome subunit alpha type-6	6.47E+08	6.53E+08
40S ribosomal protein S8	6.46E+08	1.30E+09
Histone H3;Histone H3.1	6.42E+08	4.03E+09
CD44 antigen	6.31E+08	5.28E+08
	6.24E+08	7.88E+09
Ribosomal protein L15;60S ribosomal protein L15	6.19E+08	6.08E+08
60S ribosomal protein L6	6.17E+08	1.66E+09
Protein-tyrosine-phosphatase;Receptor-type tyrosine-protein phosphatase C	6.16E+08	1.20E+09
Heat shock protein HSP 90-alpha	6.08E+08	4.05E+09
ATP synthase subunit beta, mitochondrial	6.06E+08	6.18E+09
4F2 cell-surface antigen heavy chain	6.05E+08	8.68E+08

Tubulin beta-4B chain	5.94E+08	1.94E+09
Ferritin heavy chain;Ferritin heavy chain, N-terminally processed	5.88E+08	9.15E+08
Thiamine-triphosphatase	5.78E+08	2.73E+08
Fructose-bisphosphate aldolase;Fructose-bisphosphate aldolase A	5.76E+08	3.52E+08
Olfactomedin-4	5.71E+08	2.46E+09
Protein disulfide-isomerase A3	5.62E+08	2.37E+09
Guanine nucleotide-binding protein G(I)/G(S)/G(T) subunit beta-2	5.50E+08	1.18E+09
Proteasome subunit alpha type-4;Proteasome subunit alpha type	5.48E+08	6.66E+08
GTP-binding nuclear protein Ran;GTP-binding nuclear protein Ran, testis-specific isoform	5.40E+08	1.94E+09
T-complex protein 1 subunit beta	5.35E+08	6.33E+08
Proteasome subunit alpha type;Proteasome subunit alpha type-7	5.24E+08	6.38E+08
C5a anaphylatoxin chemotactic receptor 1	5.23E+08	1.28E+08
60S ribosomal protein L28	5.23E+08	1.97E+08
ATP synthase subunit alpha, mitochondrial;ATP synthase subunit alpha	5.03E+08	4.43E+09
60S acidic ribosomal protein P0	5.02E+08	1.10E+09
Reticulon;Reticulon-4	4.99E+08	6.88E+08
	4.94E+08	7.52E+08
60S ribosomal protein L4	4.92E+08	7.51E+08
Proteasome subunit alpha type;Proteasome subunit alpha type-1	4.91E+08	7.26E+08
Fibrinogen gamma chain	4.88E+08	7.27E+08
ADP/ATP translocase 2;ADP/ATP translocase 2, N-terminally processed	4.88E+08	4.71E+09
T-complex protein 1 subunit gamma	4.82E+08	7.36E+08
Calmodulin	4.79E+08	3.01E+08
Cathepsin D	4.78E+08	1.00E+09
Cytoplasmic dynein 1 heavy chain 1	4.70E+08	1.02E+09
Cell division control protein 42 homolog	4.58E+08	1.95E+09
Pigment epithelium-derived factor	4.54E+08	4.96E+08
Aldehyde dehydrogenase, mitochondrial	4.52E+08	3.14E+09
T-complex protein 1 subunit zeta	4.46E+08	5.35E+08
T-complex protein 1 subunit eta	4.30E+08	3.64E+08
Integrin alpha-V;Integrin alpha-V heavy chain;Integrin alpha-V light chain	4.25E+08	5.71E+08
60S ribosomal protein L11	4.17E+08	6.04E+08
Proteasome subunit alpha type;Proteasome subunit alpha type-3	4.15E+08	3.69E+08
Apolipoprotein B-100;Apolipoprotein B-48	4.07E+08	4.08E+08

60S ribosomal protein L10;60S ribosomal protein L10-like	4.06E+08	3.54E+08
60S ribosomal protein L26	3.99E+08	3.15E+08
Complement C1q subcomponent subunit A	3.97E+08	6.18E+08
Lysosome-associated membrane glycoprotein 1	3.91E+08	5.30E+08
60S ribosomal protein L12	3.88E+08	5.17E+08
Transferrin receptor protein 1	3.88E+08	7.91E+08
Ras-related C3 botulinum toxin substrate 2	3.85E+08	2.12E+09
Prostaglandin F2 receptor negative regulator	3.81E+08	3.51E+08
Proteasome subunit beta type;Proteasome subunit beta type-1	3.78E+08	5.93E+08
Fermitin family homolog 3	3.75E+08	8.70E+08
T-complex protein 1 subunit epsilon	3.73E+08	5.02E+08
60S ribosomal protein L13	3.73E+08	6.37E+08
78 kDa glucose-regulated protein	3.65E+08	2.71E+09
Thyroglobulin	3.64E+08	4.35E+08
Annexin A11;Annexin	3.64E+08	1.21E+09
Proteasome subunit alpha type;Proteasome subunit alpha type-2	3.60E+08	4.76E+08
Sodium/potassium-transporting ATPase subunit alpha-1	3.58E+08	8.07E+08
Collagen alpha-1(VI) chain	3.57E+08	6.25E+08
Integrin beta;Integrin beta-5	3.53E+08	6.64E+08
CD180 antigen	3.51E+08	2.80E+08
60S acidic ribosomal protein P2	3.47E+08	3.80E+08
Proteasome subunit alpha type;Proteasome subunit alpha type-5	3.46E+08	5.41E+08
Proteasome subunit beta type;Proteasome subunit beta type-3	3.45E+08	2.07E+08
14-3-3 protein zeta/delta	3.43E+08	6.51E+08
60S ribosomal protein L8	3.28E+08	3.58E+08
	3.26E+08	3.15E+08
	3.19E+08	0
60S ribosomal protein L14	3.14E+08	3.40E+08
Histone H3.3;Histone H3.3C;Histone H3	3.13E+08	4.22E+09
	3.08E+08	1.42E+08
60S ribosomal protein L21	3.07E+08	6.75E+08
Macrosialin	3.05E+08	3.81E+08
Cation-independent mannose-6-phosphate receptor	3.01E+08	3.57E+08
Peptidyl-prolyl cis-trans isomerase;Peptidyl-prolyl cis-trans isomerase A;Peptidyl-prolyl cis-trans isomerase A, N-terminally processed	3.01E+08	7.74E+08
Collagen alpha-2(I) chain	2.99E+08	5.26E+08
Eukaryotic initiation factor 4A-I;Eukaryotic initiation factor 4A-II;Eukaryotic initiation factor 4A-II, N-terminally processed	2.99E+08	1.33E+09

	2.98E+08	1.03E+09
Alpha-enolase;Enolase	2.98E+08	7.25E+08
40S ribosomal protein S4;40S ribosomal protein S4, X isoform	2.97E+08	5.86E+08
40S ribosomal protein S2	2.97E+08	6.82E+08
UPF0258 protein KIAA1024	2.94E+08	1.32E+09
EGF-like module-containing mucin-like hormone receptor-like 1	2.93E+08	1.66E+08
Plastin-2	2.93E+08	3.10E+08
Cytochrome b-245 heavy chain	2.86E+08	3.00E+09
Prostaglandin E synthase 3	2.86E+08	6.68E+08
Protein tweety homolog 2	2.83E+08	5.14E+08
	2.82E+08	6.98E+08
H-2 class I histocompatibility antigen, K-B alpha chain;H-2 class I histocompatibility antigen, D-K alpha chain;H-2 class I histocompatibility antigen, K-K alpha chain;H-2 class I histocompatibility antigen, K-Q alpha chain;H-2 class I histocompatibility antigen, K-W28 alpha chain	2.81E+08	5.85E+08
E3 ubiquitin-protein ligase HUWE1	2.78E+08	1.71E+08
EMILIN-2	2.78E+08	2.89E+08
Profilin;Profilin-1	2.77E+08	1.50E+09
Phosphoglycerate kinase 1;Phosphoglycerate kinase	2.77E+08	5.18E+08
T-complex protein 1 subunit theta	2.77E+08	4.18E+08
60S acidic ribosomal protein P1	2.76E+08	3.90E+08
Catalase	2.73E+08	3.44E+08
Tyrosine-protein phosphatase non-receptor type substrate 1	2.71E+08	3.63E+08
Disco-interacting protein 2 homolog B	2.69E+08	2.55E+08
Endoplasmin	2.68E+08	2.35E+09
Cofilin-1	2.62E+08	9.32E+08
Moesin;Radixin	2.60E+08	9.95E+07
Insulin-like growth factor II;Insulin-like growth factor II;Preptin	2.57E+08	3.12E+08
Alpha-1,4 glucan phosphorylase;Glycogen phosphorylase, liver form	2.57E+08	6.44E+08
T-complex protein 1 subunit alpha	2.54E+08	2.18E+08
Proteasome subunit beta type-4	2.54E+08	2.87E+08
High affinity immunoglobulin epsilon receptor subunit gamma	2.52E+08	8.45E+07
T-complex protein 1 subunit delta	2.49E+08	3.65E+08
Neuropilin-1	2.49E+08	2.08E+08
Copine-3	2.39E+08	1.14E+09
Bone marrow proteoglycan;Eosinophil granule major basic protein	2.38E+08	2.22E+09
Septin-7	2.37E+08	8.95E+07

V-type proton ATPase catalytic subunit A	2.35E+08	2.87E+08
Microtubule-associated protein RP/EB family member 2	2.33E+08	2.64E+08
Ras-related protein Rab-5C	2.24E+08	2.45E+08
26S protease regulatory subunit 6B	2.22E+08	1.53E+08
Properdin	2.22E+08	9.05E+07
L-lactate dehydrogenase B chain;L-lactate dehydrogenase	2.21E+08	9.02E+08
60S ribosomal protein L18a	2.20E+08	6.08E+08
UDP-glucuronosyltransferase 1-7C	2.20E+08	2.93E+08
High mobility group protein B1	2.19E+08	1.15E+09
Transforming protein RhoA;Rho-related GTP-binding protein RhoC	2.19E+08	4.13E+08
Integrin alpha-6;Integrin alpha-6 heavy chain;Integrin alpha-6 light chain	2.19E+08	1.72E+08
60S ribosomal protein L24	2.17E+08	3.42E+08
Myosin-9	2.16E+08	4.23E+09
Arrestin domain-containing protein 1	2.15E+08	1.76E+08
Matrix Gla protein	2.15E+08	0
Vacuolar protein sorting-associated protein 37B	2.13E+08	9.86E+07
Sacsin	2.12E+08	5.59E+07
Actin-related protein 2	2.11E+08	1.42E+08
Guanine nucleotide-binding protein G(I)/G(S)/G(O) subunit gamma-12	2.11E+08	9.74E+07
Rho-related GTP-binding protein RhoG	2.10E+08	5.60E+08
Serine/arginine-rich splicing factor 3	2.09E+08	4.02E+08
Osteopontin	2.08E+08	6.56E+08
Annexin;Annexin A3	2.08E+08	1.37E+09
40S ribosomal protein S9	2.05E+08	9.72E+08
Proteasome subunit beta type-6	2.04E+08	2.09E+08
Aldehyde dehydrogenase family 16 member A1	2.04E+08	2.28E+08
CD48 antigen	2.03E+08	3.93E+08
Integrin-linked protein kinase	2.02E+08	5.96E+08
NADPH--cytochrome P450 reductase	2.01E+08	2.82E+08
Sodium-dependent phosphate transporter 2	2.00E+08	2.02E+08
Ribosomal protein L19;60S ribosomal protein L19	1.97E+08	9.32E+07
Integrin beta;Integrin beta-6	1.93E+08	1.05E+08
Pleckstrin	1.91E+08	3.04E+08
WD repeat-containing protein 1	1.90E+08	4.06E+08
Ras-related protein Rab-7a	1.87E+08	6.06E+08
Calnexin	1.87E+08	7.88E+08
Titin	1.84E+08	4.95E+08
Hsc70-interacting protein	1.83E+08	4.52E+08
Proteasome subunit beta type;Proteasome subunit beta type-7	1.82E+08	8.16E+07

Vesicle-associated membrane protein 8	1.80E+08	8.57E+07
Complement component C8 beta chain	1.77E+08	3.41E+08
Gamma-aminobutyric acid receptor subunit alpha-4	1.77E+08	2.46E+07
Transketolase	1.76E+08	3.35E+08
Latent-transforming growth factor beta-binding protein 2	1.76E+08	0
Paralemmin-2	1.75E+08	4.57E+07
Pantetheinase	1.75E+08	2.03E+08
Ras-related protein Rab-11B;Ras-related protein Rab-11A	1.74E+08	6.05E+08
Neuroplastin	1.74E+08	5.80E+07
Vinculin	1.74E+08	1.26E+08
Macrophage scavenger receptor types I and II	1.71E+08	3.34E+08
Ig mu chain C region	1.70E+08	2.38E+08
Annexin;Annexin A7	1.69E+08	1.60E+08
40S ribosomal protein S13	1.68E+08	3.01E+08
Transforming growth factor-beta-induced protein ig-h3	1.66E+08	2.23E+08
Transaldolase	1.66E+08	3.25E+07
40S ribosomal protein S16	1.66E+08	3.37E+08
Tumor susceptibility gene 101 protein	1.65E+08	2.18E+08
Coagulation factor XIII A chain	1.61E+08	4.46E+07
Ras-related protein Rap-2b;Ras-related protein Rap-2c;Ras-related protein Rap-2a	1.60E+08	1.44E+08
Voltage-gated hydrogen channel 1	1.56E+08	3.53E+08
Collagen alpha-2(VI) chain	1.56E+08	3.88E+08
Hemoglobin subunit beta-1	1.56E+08	8.60E+08
Platelet glycoprotein IX	1.55E+08	0
Lysosome-associated membrane glycoprotein 2	1.55E+08	2.65E+08
Triosephosphate isomerase	1.53E+08	3.12E+08
Programmed cell death protein 6	1.53E+08	4.08E+08
Flotillin-1	1.51E+08	5.05E+08
Secretory carrier-associated membrane protein 2	1.49E+08	1.56E+08
Heterogeneous nuclear ribonucleoprotein K	1.49E+08	7.88E+08
Heterogeneous nuclear ribonucleoprotein U	1.47E+08	1.91E+09
Proteasome subunit beta type-5	1.47E+08	1.89E+08
60S ribosomal protein L32	1.47E+08	1.18E+08
Ras-related protein Rab-14	1.46E+08	1.95E+08
60S ribosomal protein L30	1.43E+08	6.29E+08
Alpha-mannosidase;Lysosomal alpha-mannosidase	1.43E+08	9.21E+07
EH domain-containing protein 4	1.43E+08	1.76E+08
Proteasome subunit beta type;Proteasome subunit beta type-2	1.42E+08	3.73E+08
Macrophage-expressed gene 1 protein	1.40E+08	5.20E+08
Elongation factor Tu;Elongation factor Tu, mitochondrial	1.40E+08	4.70E+08

Eukaryotic translation initiation factor 5A;Eukaryotic translation initiation factor 5A-1;Eukaryotic translation initiation factor 5A-2	1.39E+08	1.43E+08
60S ribosomal protein L13a	1.39E+08	4.18E+08
14-3-3 protein sigma	1.38E+08	3.04E+07
Complement C1q tumor necrosis factor-related protein 3	1.38E+08	1.69E+08
14-3-3 protein epsilon	1.38E+08	1.36E+08
Anoctamin-6	1.36E+08	3.21E+07
40S ribosomal protein S26	1.35E+08	4.51E+08
Complement C4-B;Complement C4 beta chain;Complement C4 alpha chain;C4a anaphylatoxin;Complement C4 gamma chain	1.35E+08	2.76E+08
Extended synaptotagmin-1	1.35E+08	4.37E+08
C-type lectin domain family 7 member A	1.31E+08	2.65E+08
Ras-related protein Rab-8B	1.31E+08	2.47E+08
S-formylglutathione hydrolase	1.29E+08	1.63E+08
Syntaxin-12	1.29E+08	4.66E+07
Vesicular integral-membrane protein VIP36	1.27E+08	1.74E+08
H-2 class II histocompatibility antigen, A beta chain;H-2 class II histocompatibility antigen, A-F beta chain;H-2 class II histocompatibility antigen, A-U beta chain;H-2 class II histocompatibility antigen, A-K beta chain;H-2 class II histocompatibility antigen, A-Q beta chain;H-2 class II histocompatibility antigen, A-D beta chain	1.26E+08	7.89E+08
Leukocyte surface antigen CD47	1.26E+08	3.49E+08
Thrombospondin-4	1.26E+08	3.67E+08
Proteasome subunit beta type;Proteasome subunit beta type-8	1.24E+08	1.43E+08
	1.23E+08	8.83E+07
40S ribosomal protein S6	1.22E+08	1.48E+08
Argininosuccinate synthase	1.22E+08	6.12E+08
Anion exchange protein;Band 3 anion transport protein	1.20E+08	8.24E+08
V-type proton ATPase subunit d 1	1.20E+08	3.52E+08
Platelet glycoprotein Ib beta chain	1.19E+08	0
Cytochrome c oxidase subunit 4 isoform 1, mitochondrial	1.18E+08	2.55E+08
Macrophage mannose receptor 1	1.17E+08	0
LIM and senescent cell antigen-like-containing domain protein 1;LIM and senescent cell antigen-like-containing domain protein 2	1.17E+08	3.32E+08
Actin-related protein 2/3 complex subunit 1B	1.16E+08	6.76E+08
	1.16E+08	0
DnaJ homolog subfamily A member 1	1.15E+08	1.35E+08
40S ribosomal protein S3a	1.15E+08	6.90E+08
Ras-related protein Rab-10	1.14E+08	2.34E+08

SLAM family member 5	1.14E+08	1.47E+08
E3 ubiquitin-protein ligase UBR4	1.13E+08	1.22E+08
Leukocyte immunoglobulin-like receptor subfamily B member 3	1.13E+08	7.63E+07
	1.12E+08	1.77E+08
	1.11E+08	2.58E+07
Actin-related protein 2/3 complex subunit 4	1.11E+08	3.62E+08
60S ribosomal protein L35	1.11E+08	1.86E+08
Calreticulin	1.09E+08	1.86E+09
40S ribosomal protein S5;40S ribosomal protein S5, N-terminally processed	1.09E+08	3.16E+08
Metastasis-associated protein MTA3;Metastasis-associated protein MTA2;Metastasis-associated protein MTA1	1.09E+08	9.32E+07
Triggering receptor expressed on myeloid cells 2	1.08E+08	0
Guanine nucleotide exchange factor DBS	1.08E+08	2.25E+08
Tyrosine-protein kinase;Tyrosine-protein kinase SYK	1.07E+08	4.35E+08
26S proteasome non-ATPase regulatory subunit 2	1.06E+08	8.69E+07
	1.06E+08	3.71E+08
Flavin reductase (NADPH)	1.05E+08	4.42E+08
Endoplasmic reticulum resident protein 44	1.04E+08	2.37E+07
Ig heavy chain V region 6.96;Ig heavy chain V region 7-39;Ig heavy chain V region 345;Ig heavy chain V region 5-84;Ig heavy chain V region RF	1.03E+08	0
Protein S100-A11	1.03E+08	2.04E+09
Zinc finger protein 697	1.03E+08	0
Ras-related protein Rab-6B;Ras-related protein Rab-6A	1.00E+08	5.20E+08
60S ribosomal protein L17	9.98E+07	2.75E+08
Alpha-1,4 glucan phosphorylase;Glycogen phosphorylase, brain form	9.98E+07	2.02E+08
Monocyte differentiation antigen CD14	9.90E+07	1.13E+08
Solute carrier family 2, facilitated glucose transporter member 3	9.90E+07	4.66E+08
40S ribosomal protein S23	9.86E+07	1.80E+08
Hepatocyte growth factor activator;Hepatocyte growth factor activator short chain;Hepatocyte growth factor activator long chain	9.80E+07	8.96E+07
Cytochrome c oxidase subunit 6B1	9.72E+07	1.93E+08
Low affinity immunoglobulin gamma Fc region receptor III	9.66E+07	9.46E+07
Olfactory receptor	9.66E+07	5.23E+08
Integrin alpha-X	9.64E+07	8.86E+07
ATP-dependent RNA helicase DDX3Y;Putative ATP-dependent RNA helicase P110;ATP-dependent RNA helicase DDX3X	9.58E+07	1.89E+08

Adenylyl cyclase-associated protein;Adenylyl cyclase-associated protein 1	9.39E+07	3.66E+08
Microsomal glutathione S-transferase 1	9.26E+07	1.68E+08
Collagen alpha-1(II) chain;Collagen alpha-1(II) chain;Chondrocalcin	9.21E+07	1.92E+08
Nucleolin	9.16E+07	2.67E+08
Calcium-transporting ATPase;Sarcoplasmic/endoplasmic reticulum calcium ATPase 3	9.14E+07	1.82E+08
Deoxyribose-phosphate aldolase	9.06E+07	1.00E+08
C-X-C chemokine receptor type 4	8.99E+07	8.34E+07
Tetraspanin;Leukocyte antigen CD37	8.97E+07	6.63E+08
60S ribosomal protein L27a	8.96E+07	2.87E+08
Nucleoside diphosphate kinase;Nucleoside diphosphate kinase B	8.96E+07	1.50E+08
Adenosine kinase	8.88E+07	3.40E+08
Actin, cytoplasmic 2;Actin, cytoplasmic 2, N-terminally processed	8.81E+07	1.13E+08
Apolipoprotein M	8.66E+07	1.03E+08
Guanine nucleotide-binding protein G(k) subunit alpha	8.58E+07	3.16E+08
Integral membrane protein 2B;BRI2, membrane form;BRI2 intracellular domain;BRI2C, soluble form;Bri23 peptide	8.57E+07	1.28E+08
Protein tweety homolog 3	8.41E+07	8.54E+07
Synaptic vesicle membrane protein VAT-1 homolog	8.37E+07	5.08E+07
Coiled-coil domain-containing protein 15	8.34E+07	2.56E+08
Phosphoglucomutase-1	8.26E+07	5.72E+07
ATP-binding cassette sub-family A member 1	8.06E+07	1.54E+07
V-type proton ATPase subunit a;V-type proton ATPase 116 kDa subunit a isoform 1	8.02E+07	9.83E+07
Heterogeneous nuclear ribonucleoprotein F;Heterogeneous nuclear ribonucleoprotein F, N-terminally processed	7.99E+07	8.02E+08
Elongation factor 2	7.95E+07	1.22E+09
Guanine nucleotide-binding protein G(I)/G(S)/G(T) subunit beta-1	7.92E+07	9.88E+07
	7.80E+07	1.00E+08
Eukaryotic translation initiation factor 3 subunit H	7.77E+07	1.98E+07
F-actin-capping protein subunit alpha-2	7.71E+07	1.31E+08
Uridine-cytidine kinase-like 1	7.65E+07	5.46E+07
Choline transporter-like protein 1	7.64E+07	5.33E+07
Transgelin-2	7.57E+07	2.05E+08
Synaptosomal-associated protein;Synaptosomal-associated protein 23	7.57E+07	3.64E+07
Vacuolar protein sorting-associated protein 28 homolog	7.49E+07	1.00E+08
14-3-3 protein theta	7.44E+07	2.50E+08
Golgi apparatus protein 1	7.23E+07	2.68E+07

Dolichyl-diphosphooligosaccharide--protein glycosyltransferase 48 kDa subunit	7.17E+07	2.51E+08
Ninjurin-1	7.07E+07	2.65E+07
14-3-3 protein beta/alpha;14-3-3 protein beta/alpha, N-terminally processed	7.03E+07	1.17E+08
Vesicle-associated membrane protein 3;Vesicle-associated membrane protein 2	6.94E+07	1.76E+08
60S ribosomal protein L36a	6.88E+07	0
Matrix metalloproteinase-9	6.79E+07	3.17E+09
Proteolipid protein 2	6.73E+07	5.42E+07
Cytochrome c oxidase subunit 2	6.71E+07	7.88E+08
S-adenosylmethionine synthase;S-adenosylmethionine synthase isoform type-2;S-adenosylmethionine synthase isoform type-1	6.71E+07	9.31E+07
Cytochrome b5 type B	6.70E+07	2.38E+08
Polyadenylate-binding protein;Polyadenylate-binding protein 1	6.65E+07	1.75E+08
Sulfotransferase 1C2	6.61E+07	3.27E+07
Dihydropolyllysine-residue succinyltransferase component of 2-oxoglutarate dehydrogenase complex, mitochondrial	6.60E+07	1.25E+08
Cytochrome c oxidase subunit 5A, mitochondrial	6.58E+07	1.05E+09
Urokinase plasminogen activator surface receptor	6.51E+07	4.59E+07
Cytochrome b-245 light chain	6.50E+07	1.39E+08
Cathepsin Z	6.49E+07	0
Betaine--homocysteine S-methyltransferase 1	6.29E+07	1.49E+08
26S protease regulatory subunit 7	6.18E+07	6.79E+07
Prohibitin-2	6.15E+07	6.36E+08
Dextrin	6.15E+07	1.89E+08
Protein EVI2A	6.11E+07	0
Myb-binding protein 1A	6.10E+07	2.31E+07
Histone H2A;Histone H2A type 2-C;Histone H2A type 2-A	6.03E+07	0
Galactokinase	6.02E+07	1.02E+08
Beta-2-microglobulin	5.98E+07	5.97E+07
Malate dehydrogenase, mitochondrial	5.95E+07	1.76E+09
Cytochrome b-c1 complex subunit Rieske, mitochondrial;Cytochrome b-c1 complex subunit 11	5.94E+07	1.84E+08
Plexin-B2;Plexin-C1;Plexin-D1	5.94E+07	5.99E+07
Phosphoglycerate mutase 2;Phosphoglycerate mutase 1	5.93E+07	0
Fibromodulin	5.91E+07	1.07E+08
Secretory carrier-associated membrane protein 3	5.90E+07	0
Actin-related protein 2/3 complex subunit 3	5.86E+07	6.55E+07
Multivesicular body subunit 12A	5.78E+07	9.17E+07

Spectrin beta chain, erythrocytic	5.71E+07	1.28E+07
Actin-related protein 3	5.69E+07	2.25E+08
ADP-ribosylation factor-like protein 6-interacting protein 1	5.69E+07	4.79E+07
Coronin;Coronin-1A	5.67E+07	1.89E+09
60 kDa heat shock protein, mitochondrial	5.64E+07	3.70E+09
Tubulin beta-6 chain	5.63E+07	0
	5.59E+07	6.22E+07
Brain acid soluble protein 1	5.53E+07	1.79E+07
Protein-tyrosine-phosphatase;Receptor-type tyrosine-protein phosphatase eta	5.45E+07	5.60E+07
Katanin p60 ATPase-containing subunit A-like 2;Spermatogenesis-associated protein 5	5.44E+07	0
Napsin-A	5.43E+07	1.21E+08
Aspartate--tRNA ligase, cytoplasmic	5.42E+07	7.62E+07
Low-density lipoprotein receptor-related protein 1B	5.41E+07	8.91E+07
Asporin	5.37E+07	1.18E+08
Ribosomal protein;60S ribosomal protein L10a	5.36E+07	1.33E+08
Transmembrane emp24 domain-containing protein 10	5.28E+07	5.27E+08
Eukaryotic translation initiation factor 3 subunit E	5.19E+07	1.74E+08
Tyrosine-protein phosphatase non-receptor type;Tyrosine-protein phosphatase non-receptor type 6	5.18E+07	3.45E+08
Interleukin-1 receptor accessory protein	5.13E+07	8.14E+07
Heterogeneous nuclear ribonucleoproteins A2/B1	5.05E+07	1.63E+08
Coatomer subunit beta	5.03E+07	2.41E+07
Fatty acid-binding protein, epidermal	4.98E+07	5.60E+07
Cartilage oligomeric matrix protein	4.97E+07	5.64E+07
V-type proton ATPase subunit B, brain isoform	4.97E+07	1.19E+08
	4.96E+07	4.98E+07
	4.94E+07	1.06E+08
Serum albumin	4.92E+07	8.13E+07
Plasma membrane calcium-transporting ATPase 1;Calcium-transporting ATPase;Plasma membrane calcium-transporting ATPase 2	4.85E+07	0
ATP synthase-coupling factor 6, mitochondrial	4.82E+07	1.20E+08
Nucleosome assembly protein 1-like 1	4.75E+07	3.51E+08
	4.71E+07	0
Secreted phosphoprotein 24	4.67E+07	6.03E+08
Echinoderm microtubule-associated protein-like 2	4.59E+07	7.48E+07
Receptor protein-tyrosine kinase;Macrophage colony-stimulating factor 1 receptor	4.59E+07	0
Histone H2A;Histone H2A.V;Histone H2A.Z	4.57E+07	0
Peroxiredoxin-4	4.57E+07	1.61E+08

Eukaryotic translation initiation factor 3 subunit A	4.54E+07	8.07E+07
Long-chain specific acyl-CoA dehydrogenase, mitochondrial	4.54E+07	1.96E+08
Glutathione S-transferase Mu 1;Glutathione S-transferase Mu 7;Glutathione S-transferase Mu 2	4.53E+07	1.05E+08
Malate dehydrogenase, cytoplasmic	4.46E+07	7.54E+07
Ectonucleoside triphosphate diphosphohydrolase 1	4.45E+07	0
Ras GTPase-activating-like protein IQGAP1	4.42E+07	2.46E+08
Neural cell adhesion molecule 1	4.40E+07	2.48E+07
Basigin	4.37E+07	1.14E+08
Thrombospondin-1	4.35E+07	7.05E+08
60S ribosomal protein L27	4.34E+07	2.22E+08
	4.32E+07	1.97E+08
Bone marrow stromal antigen 2	4.29E+07	1.44E+07
Tubulin beta-2B chain;Tubulin beta-2A chain	4.27E+07	6.80E+07
14-3-3 protein gamma;14-3-3 protein gamma, N-terminally processed	4.13E+07	7.60E+07
Rab GDP dissociation inhibitor beta	4.13E+07	9.20E+07
Delta(3,5)-Delta(2,4)-dienoyl-CoA isomerase, mitochondrial	4.04E+07	1.08E+08
Serine/arginine-rich splicing factor 1	4.04E+07	1.93E+08
F-actin-capping protein subunit alpha-1	4.04E+07	1.87E+08
T-lymphocyte surface antigen Ly-9	3.99E+07	6.87E+07
Myristoylated alanine-rich C-kinase substrate	3.98E+07	7.68E+07
40S ribosomal protein S25	3.93E+07	1.00E+08
Thymidylate kinase	3.83E+07	2.44E+07
Serine incorporator 3	3.82E+07	3.91E+07
Acyl-protein thioesterase 2	3.80E+07	5.50E+07
40S ribosomal protein S19	3.80E+07	3.74E+07
Legumain	3.69E+07	0
Protein disulfide-isomerase	3.66E+07	1.88E+09
Alpha-centractin;Beta-centractin	3.64E+07	7.95E+07
ADP-ribosylation factor-like protein 8B;ADP-ribosylation factor-like protein 8A	3.63E+07	0
Coatomer subunit alpha;Coatomer subunit alpha;Xenin;Proxenin	3.62E+07	8.65E+07
Endophilin-A2	3.61E+07	0
Chitinase-like protein 3	3.60E+07	4.11E+09
Pyruvate dehydrogenase E1 component subunit beta, mitochondrial	3.56E+07	8.83E+07
Peflin	3.55E+07	7.92E+07
Non-specific protein-tyrosine kinase;Tyrosine-protein kinase Lyn	3.54E+07	3.87E+07
	3.54E+07	9.28E+07

Prohibitin	3.50E+07	1.13E+09
Guanine nucleotide-binding protein G(s) subunit alpha isoforms short;Guanine nucleotide-binding protein G(s) subunit alpha isoforms XLas	3.46E+07	0
Proteasome subunit beta type;Proteasome subunit beta type-9	3.44E+07	1.12E+07
Core histone macro-H2A.1;Histone H2A	3.43E+07	1.65E+08
Fumarate hydratase, mitochondrial	3.43E+07	1.04E+08
Small nuclear ribonucleoprotein Sm D3	3.38E+07	6.86E+07
EH domain-containing protein 1;EH domain-containing protein 3	3.38E+07	1.81E+08
Insulin-like growth factor-binding protein 2	3.38E+07	4919200
26S proteasome non-ATPase regulatory subunit 11	3.35E+07	9.56E+07
Cytochrome b5	3.34E+07	0
Unconventional myosin-Ic	3.34E+07	2.29E+07
40S ribosomal protein S18	3.33E+07	1.49E+08
40S ribosomal protein S15a	3.27E+07	4.15E+08
Actin-related protein 2/3 complex subunit 2	3.22E+07	4.22E+08
Ras-related protein Rab-35	3.19E+07	8.56E+07
Guanine nucleotide-binding protein G(q) subunit alpha	3.13E+07	0
Solute carrier family 2, facilitated glucose transporter member 1	3.03E+07	8.20E+07
Aldose reductase	2.99E+07	4.83E+08
Eukaryotic translation initiation factor 3 subunit F	2.98E+07	0
Prolyl endopeptidase FAP;Antiplasmin-cleaving enzyme FAP, soluble form	2.97E+07	4.75E+07
Cytochrome b-c1 complex subunit 1, mitochondrial	2.93E+07	8.11E+08
Inosine-5-monophosphate dehydrogenase;Inosine-5-monophosphate dehydrogenase 2	2.86E+07	6.26E+07
Protein unc-93 homolog B1	2.81E+07	4.34E+07
26S protease regulatory subunit 4	2.79E+07	0
Protein S100;Protein S100-A4	2.75E+07	2.11E+08
Protein disulfide-isomerase A6	2.72E+07	2.10E+08
Vacuolar protein sorting-associated protein 35	2.68E+07	9.91E+07
Ras suppressor protein 1	2.66E+07	0
Protein S100-A9	2.64E+07	9.34E+07
40S ribosomal protein S10	2.64E+07	2.02E+08
Dolichyl-diphosphooligosaccharide--protein glycosyltransferase subunit 1	2.64E+07	1.00E+09
Stress-70 protein, mitochondrial	2.62E+07	5.68E+08
Raftlin	2.58E+07	1.79E+07
SUN domain-containing protein 2	2.57E+07	1.75E+09
Retinol-binding protein 4	2.50E+07	4.27E+07
Thioredoxin-related transmembrane protein 4	2.48E+07	9.16E+07

CD177 antigen	2.48E+07	6.51E+09
ATP-citrate synthase	2.47E+07	5.28E+07
Arachidonate 5-lipoxygenase-activating protein	2.46E+07	6.36E+08
CD5 antigen-like	2.45E+07	1.12E+07
V-type proton ATPase subunit H	2.41E+07	6042900
RuvB-like 2	2.39E+07	4.22E+07
Glycosylated lysosomal membrane protein	2.39E+07	0
ATP synthase subunit d, mitochondrial	2.38E+07	6.93E+08
Transmembrane protein C16orf54 homolog	2.37E+07	3.30E+07
Growth factor receptor-bound protein 2	2.34E+07	0
Vacuolar protein sorting-associated protein 4B	2.32E+07	1.44E+08
Protein-glutamine gamma-glutamyltransferase 2	2.32E+07	2.58E+08
Nuclear pore membrane glycoprotein 210	2.26E+07	3.62E+08
60S ribosomal protein L31	2.24E+07	5.60E+07
Peroxiredoxin-5, mitochondrial	2.22E+07	7.35E+07
SLAM family member 7	2.13E+07	0
Ketosamine-3-kinase	2.10E+07	2.60E+07
Exportin-1	2.09E+07	3.36E+07
AP-2 complex subunit alpha-2	2.08E+07	2.75E+07
	2.06E+07	0
Mitogen-activated protein kinase kinase kinase 4;Misshapen-like kinase 1;Traf2 and NCK-interacting protein kinase	2.04E+07	1406200
26S proteasome non-ATPase regulatory subunit 14	2.02E+07	0
C-type lectin domain family 6 member A	2.00E+07	0
Vesicle-associated membrane protein-associated protein B	1.99E+07	0
Regulator complex protein LAMTOR5	1.97E+07	1.44E+07
Reticulocalbin-3	1.97E+07	0
Cadherin-13	1.96E+07	0
Multivesicular body subunit 12B	1.93E+07	0
Serine/arginine-rich splicing factor 6;Serine/arginine-rich splicing factor 4	1.92E+07	0
Insulin-like growth factor-binding protein 6	1.90E+07	4.13E+07
Cytochrome b-c1 complex subunit 2, mitochondrial	1.89E+07	1.39E+09
Platelet-activating factor acetylhydrolase	1.82E+07	7.75E+07
Leukocyte immunoglobulin-like receptor subfamily B member 4;Mast cell surface glycoprotein Gp49A	1.79E+07	3.61E+07
Voltage-dependent anion-selective channel protein 1	1.66E+07	9.02E+08
Leucyl-cystinyl aminopeptidase	1.65E+07	1.42E+08
Serine--tRNA ligase, cytoplasmic	1.62E+07	5.79E+07
Barrier-to-autointegration factor;Barrier-to-autointegration factor, N-terminally processed	1.62E+07	7.83E+07
BRISC complex subunit Abro1	1.54E+07	1.11E+07

Aconitate hydratase, mitochondrial	1.49E+07	1.04E+09
Bifunctional purine biosynthesis protein PURH;Phosphoribosylaminoimidazolecarboxamide formyltransferase;IMP cyclohydrolase	1.46E+07	5.14E+07
Heterogeneous nuclear ribonucleoproteins C1/C2	1.36E+07	2.69E+08
Proteasome activator complex subunit 2	1.36E+07	0
Aspartate aminotransferase, mitochondrial	1.36E+07	9.95E+07
CD2-associated protein	1.32E+07	6666000
Beta-1,4-galactosyltransferase 1;Lactose synthase A protein;N-acetyllactosamine synthase;Beta-N- acetylglucosaminylglycopeptide beta-1,4- galactosyltransferase;Beta-N-acetylglucosaminyl- glycolipid beta-1,4-galactosyltransferase;Processed beta- 1,4-galactosyltransferase 1	1.30E+07	3.65E+07
Coagulation factor X;Factor X light chain;Factor X heavy chain;Activated factor Xa heavy chain	1.29E+07	1.32E+08
Mimecan	1.27E+07	2.86E+07
26S protease regulatory subunit 6A	1.26E+07	0
Guanine nucleotide-binding protein subunit beta-2-like 1;Guanine nucleotide-binding protein subunit beta-2-like 1, N-terminally processed	1.26E+07	5.34E+08
Sorcin	1.26E+07	3.30E+08
Trifunctional enzyme subunit alpha, mitochondrial;Long- chain enoyl-CoA hydratase;Long chain 3-hydroxyacyl- CoA dehydrogenase	1.25E+07	6.37E+08
Protein transport protein Sec31A	1.24E+07	2.63E+07
Ras GTPase-activating-like protein IQGAP2	1.21E+07	2.69E+07
Basement membrane-specific heparan sulfate proteoglycan core protein;Endorepellin;LG3 peptide	1.15E+07	0
Small nuclear ribonucleoprotein-associated protein;Small nuclear ribonucleoprotein-associated protein B;Small nuclear ribonucleoprotein-associated protein N	1.13E+07	3.04E+07
Ras-related protein Rab-1A;Ras-related protein Rab-1B	1.10E+07	2.55E+07
Myoferlin	1.08E+07	0
Heat shock protein beta-1	9900000	0
Arginine--tRNA ligase, cytoplasmic	9569600	2.42E+07
Syntaxin-binding protein 2	9458100	1.89E+07
Platelet glycoprotein Ib alpha chain	9436900	0
	9042600	6.08E+07
Stabilin-1	8519600	0
Trem-like transcript 1 protein	7810800	0
Neutrophilic granule protein	7498300	2.44E+09
Sequestosome-1	7494200	6708400
Phosphate carrier protein, mitochondrial	7257900	5.54E+08
MAD2L1-binding protein	7213500	1570800

Tubulin beta-4A chain	7209900	1.42E+07
	6357200	3.14E+07
Ras association domain-containing protein 2	6088100	1.57E+07
ATP-binding cassette sub-family E member 1	5609800	5708100
Dolichyl-diphosphooligosaccharide--protein glycosyltransferase subunit 2	4199800	6.49E+08
Stomatin-like protein 2, mitochondrial	3994400	3.92E+07
ATPase inhibitor, mitochondrial	377340	1991500
Protein mago nashi homolog 2;Protein mago nashi homolog	0	3.28E+07
Antigen peptide transporter 2	0	5.21E+07
Natural resistance-associated macrophage protein 1	0	3.79E+07
Lymphocyte antigen 6E	0	1.06E+08
Transcription elongation factor B polypeptide 1	0	5.61E+07
ATP-dependent RNA helicase A	0	6.93E+07
Matrin-3	0	8.11E+07
TAR DNA-binding protein 43	0	3.01E+08
Lymphocyte antigen 6G	0	3.43E+08
Laminin subunit alpha-2	0	0
ORM1-like protein 2;ORM1-like protein 1	0	0
Signal transducer and activator of transcription;Signal transducer and activator of transcription 1	0	1.83E+08
Glutathione peroxidase;Glutathione peroxidase 1	0	2.27E+08
Muscleblind-like protein 1;Muscleblind-like protein 3;Muscleblind-like protein 2	0	1.22E+08
Neutrophil gelatinase-associated lipocalin	0	1.80E+08
Ragulator complex protein LAMTOR1	0	3.61E+07
cAMP-dependent protein kinase type II-alpha regulatory subunit;cAMP-dependent protein kinase type II-beta regulatory subunit	0	3.34E+07
Immunoglobulin superfamily member 2	0	0
CD97 antigen	0	2.25E+08
Ras-related protein Rap-1A	0	1.05E+08
Fascin	0	0
Ubiquitin-conjugating enzyme E2 D2;Ubiquitin-conjugating enzyme E2 D3	0	5.95E+07
Beta-2-microglobulin;Ig lambda-1 chain C region	0	1.45E+07
Neurobeachin-like protein 2	0	1.02E+08
cAMP-dependent protein kinase catalytic subunit beta	0	2.69E+07
Tetraspanin;Tetraspanin-9	0	0
Nuclear receptor-binding protein	0	0
Major facilitator superfamily domain-containing protein 10	0	5.42E+07
	0	0

FXYP domain-containing ion transport regulator 5	0	5896100
Paxillin	0	1.37E+08
Myotrophin	0	2.00E+08
	0	2.59E+07
Coatamer subunit gamma-2;Coatamer subunit gamma-1	0	2.94E+07
Eukaryotic initiation factor 4A-III;Eukaryotic initiation factor 4A-III, N-terminally processed	0	8.54E+07
Cytochrome c oxidase subunit NDUFA4	0	8.48E+07
Endoplasmic reticulum-Golgi intermediate compartment protein 2	0	1.23E+07
NADH dehydrogenase [ubiquinone] 1 alpha subcomplex subunit 9, mitochondrial	0	2.33E+07
Metalloendopeptidase;Meprin A subunit alpha	0	8.02E+07
ADP-dependent glucokinase	0	1.28E+09
Olfactomedin-like protein 3	0	3.48E+07
N-acylneuraminase cytidyltransferase	0	3669900
Phosphoenolpyruvate carboxykinase [GTP], mitochondrial	0	1.68E+08
C-type lectin domain family 12 member A	0	2.02E+08
Protein disulfide-isomerase A4	0	4.38E+07
Cytoplasmic FMR1-interacting protein 1	0	8.59E+07
ADP-ribosyl cyclase/cyclic ADP-ribose hydrolase 2	0	1.90E+08
Copine-2	0	1.27E+08
Cathelin-related antimicrobial peptide	0	1.84E+09
Erlin-2;Erlin-1	0	2.70E+07
Metalloreductase STEAP3	0	5.01E+07
Ankyrin-1	0	2.57E+07
Heterogeneous nuclear ribonucleoprotein Q	0	1.00E+08
C-type lectin domain family 5 member A	0	0
Fatty acid synthase;[Acyl-carrier-protein] S-acetyltransferase;[Acyl-carrier-protein] S-malonyltransferase;3-oxoacyl-[acyl-carrier-protein] synthase;3-oxoacyl-[acyl-carrier-protein] reductase;3-hydroxyacyl-[acyl-carrier-protein] dehydratase;Enoyl-[acyl-carrier-protein] reductase;Oleoacyl-[acyl-carrier-protein] hydrolase	0	5.68E+07
TBC1 domain family member 10B	0	0
MICOS complex subunit Mic60	0	3.01E+07
Electron transfer flavoprotein subunit beta	0	1.12E+08
26S proteasome non-ATPase regulatory subunit 1	0	0
Propionyl-CoA carboxylase beta chain, mitochondrial	0	0
Neutral alpha-glucosidase AB	0	9.63E+07
Alpha-actinin-1;Alpha-actinin-4	0	1.58E+07
Heat shock 70 kDa protein 1A;Heat shock 70 kDa protein 1B	0	7.83E+07

Probable ATP-dependent RNA helicase DDX5	0	2.96E+08
26S proteasome non-ATPase regulatory subunit 7	0	3.83E+07
Cytohesin-4;Cytohesin-1;Cytohesin-3;Cytohesin-2	0	2.75E+07
60S ribosomal protein L23	0	7.62E+07
Septin-9	0	0
Formin-like protein 1;Formin-like protein 3;Formin-like protein 2	0	3.02E+07
3-beta-hydroxysteroid-Delta(8),Delta(7)-isomerase	0	7.73E+07
Eukaryotic translation initiation factor 3 subunit I	0	9382700
Four and a half LIM domains protein 1	0	1.53E+08
Histone-binding protein RBBP7	0	5.61E+07
Mitochondrial carrier homolog 2	0	7.94E+07
116 kDa U5 small nuclear ribonucleoprotein component	0	4.59E+07
Tetraspanin;CD82 antigen	0	2.32E+08
B-cell differentiation antigen CD72	0	2.45E+07
Mitochondrial-processing peptidase subunit alpha	0	8.96E+07
ATP synthase subunit gamma;ATP synthase subunit gamma, mitochondrial	0	5.92E+08
Heterogeneous nuclear ribonucleoprotein A3	0	2.25E+07
Aspartyl/asparaginyl beta-hydroxylase	0	4.09E+07
F-actin-capping protein subunit beta	0	7.18E+07
55 kDa erythrocyte membrane protein	0	0
Fibrillin-1	0	9206700
Glycerol-3-phosphate dehydrogenase;Glycerol-3-phosphate dehydrogenase, mitochondrial	0	4.53E+07
RNA-binding protein Raly	0	5.78E+07
DnaJ homolog subfamily C member 5	0	3956900
Non-specific protein-tyrosine kinase;Tyrosine-protein kinase BTK	0	8.58E+07
Protein SET	0	5.52E+07
Transmembrane emp24 domain-containing protein 2	0	3.77E+07
von Willebrand factor;von Willebrand antigen 2	0	2.69E+07
Glucose-6-phosphate 1-dehydrogenase;Glucose-6-phosphate 1-dehydrogenase X;Glucose-6-phosphate 1-dehydrogenase 2	0	5.13E+08
4-trimethylaminobutyraldehyde dehydrogenase	0	2.56E+08
Carnitine O-palmitoyltransferase 1, liver isoform	0	1.13E+08
Toll-interacting protein	0	0
Histidine triad nucleotide-binding protein 1	0	4.08E+07
Glycerol kinase 2;Glycerol kinase	0	6.25E+07
Lymphocyte cytosolic protein 2	0	6.78E+07
Aldehyde dehydrogenase;Fatty aldehyde dehydrogenase	0	5.92E+07

Myosin light chain kinase, smooth muscle;Myosin light chain kinase, smooth muscle, deglutamylated form	0	0
40S ribosomal protein SA	0	3.32E+08
Mitogen-activated protein kinase;Mitogen-activated protein kinase 14	0	1.30E+07
CAD protein;Glutamine-dependent carbamoyl-phosphate synthase;Aspartate carbamoyltransferase;Dihydroorotase	0	1.40E+08
Syntaxin-binding protein 5-like	0	1.05E+08
Glycerol-3-phosphate dehydrogenase [NAD(+)];Glycerol-3-phosphate dehydrogenase 1-like protein;Glycerol-3-phosphate dehydrogenase [NAD(+)], cytoplasmic	0	0
26S proteasome non-ATPase regulatory subunit 13	0	2.57E+08
Myosin-1	0	7169300
Carbonyl reductase [NADPH] 1	0	3.73E+07
Deleted in malignant brain tumors 1 protein	0	8.18E+07
H/ACA ribonucleoprotein complex subunit 4	0	0
Copine-1	0	1.36E+08
Integrin alpha-L	0	5.42E+08
Extracellular matrix protein 1	0	0
Apoptotic chromatin condensation inducer in the nucleus	0	0
Leucine-rich repeat-containing protein 25	0	0
Ubiquitin-like modifier-activating enzyme 1	0	4.37E+08
CAAX prenyl protease 1 homolog	0	8.66E+07
Bifunctional glutamate/proline--tRNA ligase;Glutamate--tRNA ligase;Proline--tRNA ligase	0	1.36E+08
Dedicator of cytokinesis protein 8	0	1740100
Succinyl-CoA ligase subunit beta;Succinyl-CoA ligase [GDP-forming] subunit beta, mitochondrial	0	5.23E+07
GTPase IMAP family member 4	0	3.82E+07
Signal peptidase complex catalytic subunit SEC11;Signal peptidase complex catalytic subunit SEC11A	0	4.30E+07
Signal transducer and activator of transcription;Signal transducer and transcription activator 6	0	0
Acyl-protein thioesterase 1	0	3.86E+07
NADH dehydrogenase [ubiquinone] 1 beta subcomplex subunit 10	0	2.78E+07
Myosin regulatory light polypeptide 9;Myosin regulatory light chain 12B	0	5.59E+07
40S ribosomal protein S14	0	8.31E+07
Ubiquitin thioesterase OTUB1	0	6.83E+07
Dynactin subunit 1	0	0
Integrin beta;Integrin beta-2-like protein	0	6.83E+08
Ubiquitin carboxyl-terminal hydrolase;Ubiquitin carboxyl-terminal hydrolase 5	0	2.05E+07
Histone deacetylase;Histone deacetylase 1	0	3.72E+07

P2X purinoceptor;P2X purinoceptor 4	0	2.93E+07
Putative oxidoreductase GLYR1	0	9.70E+07
60S ribosomal protein L5	0	5.61E+07
Non-specific protein-tyrosine kinase;Tyrosine-protein kinase Fyn;Tyrosine-protein kinase Yes;Neuronal proto-oncogene tyrosine-protein kinase Src;Proto-oncogene tyrosine-protein kinase LCK	0	4.50E+07
Voltage-dependent anion-selective channel protein 2	0	6.84E+08
Long-chain-fatty-acid--CoA ligase 1;Long-chain-fatty-acid--CoA ligase 5	0	5.44E+07
Glycogen [starch] synthase, muscle	0	1.60E+08
Peroxiredoxin-6	0	4.98E+07
Malectin	0	1.08E+08
Glutathione S-transferase omega-1;Glutathione S-transferase omega-2	0	2.32E+07
Acidic mammalian chitinase	0	3.51E+07
	0	0
Branched-chain-amino-acid aminotransferase;Branched-chain-amino-acid aminotransferase, mitochondrial	0	7.08E+07
Microfibrillar-associated protein 5	0	1.29E+07
Choline-phosphate cytidyltransferase A	0	0
Bridging integrator 2	0	6794800
Cathepsin E	0	8.14E+07
Glycogen synthase kinase-3 beta;Glycogen synthase kinase-3 alpha	0	8884300
Minor histocompatibility protein HA-1	0	6.19E+07
	0	0
Sphingosine-1-phosphate lyase 1	0	6.68E+07
Synaptophysin-like protein 1	0	1.33E+08
Surfeit locus protein 4	0	0
NudC domain-containing protein 2	0	2.70E+07
	0	1.55E+08
Dynamin-1-like protein	0	7.49E+07
Rho guanine nucleotide exchange factor 1	0	1.93E+07
Protein LYRIC	0	2.26E+07
Splicing factor U2AF 26 kDa subunit;Splicing factor U2AF 35 kDa subunit	0	9.10E+07
Glutathione S-transferase Mu 5	0	2.63E+07
Synaptojanin-2-binding protein	0	2.82E+07
Ribosomal protein S6 kinase;Ribosomal protein S6 kinase alpha-1	0	3.35E+07
Torsin-1A-interacting protein 1	0	2.16E+08
Proto-oncogene vav	0	9.69E+07

Ubiquitin carboxyl-terminal hydrolase;Ubiquitin carboxyl-terminal hydrolase 7	0	0
Deoxynucleoside triphosphate triphosphohydrolase SAMHD1	0	7.03E+07
Atlastin-3	0	5.29E+07
Acidic leucine-rich nuclear phosphoprotein 32 family member E	0	8.83E+07
Small nuclear ribonucleoprotein E	0	0
Adenylosuccinate lyase	0	2.25E+07
Acyl-coenzyme A oxidase;Peroxisomal acyl-coenzyme A oxidase 3	0	0
	0	0
Hexokinase;Hexokinase-3	0	2.55E+08
GPI-anchor transamidase	0	0
E3 ubiquitin-protein ligase RNF213	0	4.39E+07
Heterogeneous nuclear ribonucleoprotein D0;Heterogeneous nuclear ribonucleoprotein D-like	0	7.35E+07
Dynamin-3;Dynamin-2	0	2.89E+07
Zinc finger homeobox protein 3	0	349080
Sister chromatid cohesion protein PDS5 homolog A;Sister chromatid cohesion protein PDS5 homolog B	0	3.00E+07
Protein kinase C delta type;Protein kinase C delta type;Protein kinase C delta type regulatory subunit;Protein kinase C delta type catalytic subunit;Protein kinase C	0	1.47E+08
Cytoplasmic FMR1-interacting protein 2	0	1.76E+07
40S ribosomal protein S7	0	6.36E+09
Non-specific protein-tyrosine kinase;Tyrosine-protein kinase HCK	0	1.04E+08
Thioredoxin-related transmembrane protein 1	0	1.29E+08
Cathepsin S	0	1.73E+08
Probable global transcription activator SNF2L1;SWI/SNF-related matrix-associated actin-dependent regulator of chromatin subfamily A member 5	0	2.12E+07
Sulfide:quinone oxidoreductase, mitochondrial	0	5.15E+07
Prenylcysteine oxidase	0	2.24E+07
Methylosome protein 50	0	4542100
Neutrophil cytosol factor 1	0	3.25E+08
ATP synthase subunit f, mitochondrial	0	1.80E+08
Calumenin	0	5552400
Polypyrimidine tract-binding protein 3	0	1.56E+08
Importin subunit alpha;Importin subunit alpha-7;Importin subunit alpha-5;Importin subunit alpha-5, N-terminally processed	0	1.54E+07
Ribose-phosphate pyrophosphokinase 1;Ribose-phosphate pyrophosphokinase 2	0	1.26E+08
Valine--tRNA ligase	0	5.83E+07

Sialoadhesin	0	1.39E+08
Splicing factor 3B subunit 1	0	3.88E+07
Heterogeneous nuclear ribonucleoprotein L	0	3.05E+08
AP complex subunit beta;AP-2 complex subunit beta;AP-1 complex subunit beta-1	0	2.16E+07
3-ketoacyl-CoA thiolase A, peroxisomal;3-ketoacyl-CoA thiolase B, peroxisomal	0	0
SUMO-activating enzyme subunit 2	0	5550900
Calcium-transporting ATPase;Sarcoplasmic/endoplasmic reticulum calcium ATPase 2	0	3.16E+07
Voltage-dependent anion-selective channel protein 3	0	3.67E+08
Adenylosuccinate synthetase isozyme 1	0	4.67E+07
Myosin-14	0	5.97E+07
Ras-related C3 botulinum toxin substrate 1;Ras-related C3 botulinum toxin substrate 3	0	1.76E+08
	0	1.70E+07
Interferon-induced very large GTPase 1	0	2.07E+07
Eukaryotic translation initiation factor 3 subunit C	0	3.02E+07
Dihydrolipoyl dehydrogenase, mitochondrial;Dihydrolipoyl dehydrogenase	0	8.22E+07
3-hydroxyacyl-CoA dehydrogenase type-2	0	1.55E+08
Glucosidase 2 subunit beta	0	2.07E+07
Homogentisate 1,2-dioxygenase	0	1.97E+07
CD151 antigen	0	4.13E+07
Heterogeneous nuclear ribonucleoprotein H;Heterogeneous nuclear ribonucleoprotein H, N-terminally processed;Heterogeneous nuclear ribonucleoprotein H2	0	1.26E+08
Neutrophil collagenase	0	2.73E+08
Neutrophil cytosol factor 2	0	5.48E+07
UDP-glucose 6-dehydrogenase	0	7.93E+07
Very-long-chain 3-oxoacyl-CoA reductase	0	9.79E+07
Formyl peptide receptor 2	0	1.86E+08
Catechol O-methyltransferase	0	4.36E+07
Peptidoglycan-recognition protein;Peptidoglycan recognition protein 1	0	9.92E+07
ATP-dependent Clp protease proteolytic subunit;ATP-dependent Clp protease proteolytic subunit, mitochondrial	0	3.86E+07
Tripeptidyl-peptidase 1	0	0
Complement C3;Complement C3 beta chain;C3-beta-c;Complement C3 alpha chain;C3a anaphylatoxin;Acylation stimulating protein;Complement C3b alpha chain;Complement C3c alpha chain fragment 1;Complement C3dg fragment;Complement C3g fragment;Complement C3d fragment;Complement C3f fragment;Complement C3c alpha chain fragment 2	0	3.15E+07

Thy-1 membrane glycoprotein	0	8.78E+07
H-2 class II histocompatibility antigen gamma chain	0	8.40E+07
Ribonucleoside-diphosphate reductase;Ribonucleoside-diphosphate reductase large subunit	0	1.69E+07
Adenine phosphoribosyltransferase	0	2.69E+08
Lactotransferrin	0	1.50E+09
Superoxide dismutase;Superoxide dismutase [Mn], mitochondrial	0	8.19E+07
Lymphocyte antigen 6C2;Lymphocyte antigen 6C1	0	2.01E+09
Activated RNA polymerase II transcriptional coactivator p15	0	4.09E+07
Myeloperoxidase;Myeloperoxidase light chain;Myeloperoxidase heavy chain	0	1.16E+10
Integrin alpha-5;Integrin alpha-5 heavy chain;Integrin alpha-5 light chain	0	3.77E+07
ATP-dependent 6-phosphofructokinase, liver type;ATP-dependent 6-phosphofructokinase;ATP-dependent 6-phosphofructokinase, muscle type;ATP-dependent 6-phosphofructokinase, platelet type	0	1.40E+08
Gelsolin	0	0
Non-specific protein-tyrosine kinase;Tyrosine-protein kinase Fgr	0	1.30E+08
H-2 class II histocompatibility antigen, A-U alpha chain;H-2 class II histocompatibility antigen, A-B alpha chain;Beta-2-microglobulin;H-2 class II histocompatibility antigen, A-Q alpha chain;H-2 class II histocompatibility antigen, A-S alpha chain;H-2 class II histocompatibility antigen, A-R alpha chain;H-2 class II histocompatibility antigen, A-F alpha chain;H-2 class II histocompatibility antigen, I-E alpha chain;H-2 class II histocompatibility antigen, A-D alpha chain;H-2 class II histocompatibility antigen, A-K alpha chain	0	1.23E+08
26S proteasome non-ATPase regulatory subunit 3	0	2913100
Lamin-B1	0	4.06E+08
Nucleoside diphosphate kinase;Nucleoside diphosphate kinase A	0	4483500
Fibroblast growth factor;Fibroblast growth factor 2	0	4.30E+07
Histone H1.2;Histone H1.4;Histone H1.3;Histone H1.1	0	3.60E+08
Galectin-1	0	1.76E+08
Phosphatidylcholine-sterol acyltransferase	0	3.44E+07
Polypyrimidine tract-binding protein 1	0	3.73E+08
Serpin H1	0	3.06E+07
Cytochrome c oxidase subunit 5B, mitochondrial	0	7.89E+07
Beta-hexosaminidase;Beta-hexosaminidase subunit beta	0	1.77E+08
Thioredoxin-dependent peroxide reductase, mitochondrial	0	1.42E+08
Embigin	0	0

Chromobox protein homolog 3	0	7.19E+07
Peptidyl-prolyl cis-trans isomerase;Peptidyl-prolyl cis-trans isomerase B	0	1.85E+08
DNA helicase;DNA replication licensing factor MCM3	0	4.99E+07
High affinity immunoglobulin gamma Fc receptor I	0	0
Glutamate dehydrogenase 1, mitochondrial	0	4.85E+08
Protein S100;Protein S100-A8	0	0
Guanine nucleotide-binding protein subunit alpha-13	0	1.95E+07
Histone H2AX;Histone H2A type 2-B	0	0
Aconitate hydratase;Cytoplasmic aconitate hydratase	0	2.14E+08
Cathepsin G	0	1.40E+08
Beta-hexosaminidase;Beta-hexosaminidase subunit alpha	0	7.67E+07
Alpha-2-HS-glycoprotein	0	1.26E+08
Ornithine aminotransferase, mitochondrial	0	9.65E+07
High mobility group protein B2	0	4.10E+08
Carcinoembryonic antigen-related cell adhesion molecule 1	0	1.40E+08
Ras-related protein Rab-3D	0	8.80E+07
Ras-related protein Rab-21	0	1.34E+08
Ras-related protein Rab-18	0	2.10E+07
Pyruvate dehydrogenase E1 component subunit alpha;Pyruvate dehydrogenase E1 component subunit alpha, somatic form, mitochondrial	0	2.02E+08
rRNA 2-O-methyltransferase fibrillar; rRNA/tRNA 2-O-methyltransferase fibrillar-like protein 1	0	1.71E+08
Tyrosine-protein phosphatase non-receptor type;Tyrosine-protein phosphatase non-receptor type 1	0	0
Oxygen-dependent coproporphyrinogen-III oxidase, mitochondrial	0	1.63E+08
Hydroxymethylglutaryl-CoA lyase, mitochondrial	0	6.22E+07
Non-specific protein-tyrosine kinase;Tyrosine-protein kinase CSK	0	0
Signal transducer and activator of transcription;Signal transducer and activator of transcription 3	0	7.34E+07
Histone H1.5	0	5.32E+07
Medium-chain specific acyl-CoA dehydrogenase, mitochondrial	0	3.45E+07
Dolichyl-diphosphooligosaccharide--protein glycosyltransferase subunit STT3A	0	1.14E+08
ADP/ATP translocase 1	0	2.21E+08
Arachidonate 5-lipoxygenase	0	1.42E+08
Eosinophil peroxidase;Eosinophil peroxidase light chain;Eosinophil peroxidase heavy chain	0	1.94E+09
DNA replication licensing factor MCM4	0	1.85E+07
DNA helicase;DNA replication licensing factor MCM5	0	0

Corticosteroid 11-beta-dehydrogenase isozyme 1	0	8.76E+07
Very long-chain specific acyl-CoA dehydrogenase, mitochondrial	0	2.77E+07
Proliferation-associated protein 2G4	0	1.06E+08
Translocator protein	0	1.63E+08
60S ribosomal protein L9	0	5.39E+08
Peroxisomal multifunctional enzyme type 2;(3R)-hydroxyacyl-CoA dehydrogenase;Enoyl-CoA hydratase 2	0	3.20E+07
NADH dehydrogenase [ubiquinone] iron-sulfur protein 6, mitochondrial	0	2.25E+07
Monocarboxylate transporter 1	0	0
Ras-related protein Rab-2A;Ras-related protein Rab-2B	0	2.75E+08
Isocitrate dehydrogenase [NADP], mitochondrial	0	6.89E+08
Erythrocyte band 7 integral membrane protein	0	5.35E+07
Galactocerebrosidase	0	2.01E+07
Ras-related protein Rab-8A	0	2.61E+08
ADP-ribosyl cyclase/cyclic ADP-ribose hydrolase 1	0	0
V-type proton ATPase subunit D	0	2.09E+07
Endoplasmic reticulum resident protein 29	0	1.77E+08
Monocarboxylate transporter 4	0	6.37E+07
Transmembrane 9 superfamily member 2	0	4.68E+07
Eukaryotic translation initiation factor 5	0	6.66E+07
DNA-directed RNA polymerase III subunit RPC2	0	6.71E+07
RuvB-like 1	0	1.55E+08
Poly(rC)-binding protein 1	0	3.29E+08
40S ribosomal protein S20	0	2.27E+08
60S ribosomal protein L37a	0	2.65E+07
Protein transport protein Sec61 subunit alpha isoform 1	0	3.80E+07
ADP-ribosylation factor 4	0	1.84E+08
Nuclear transport factor 2	0	1.14E+08
Serine/threonine-protein phosphatase PP1-alpha catalytic subunit;Serine/threonine-protein phosphatase;Serine/threonine-protein phosphatase PP1-gamma catalytic subunit	0	1.93E+08
Serine/threonine-protein phosphatase PP1-beta catalytic subunit	0	5.79E+07
26S protease regulatory subunit 8	0	0
40S ribosomal protein S11	0	5.50E+08
Small nuclear ribonucleoprotein Sm D1	0	4.30E+07
26S protease regulatory subunit 10B	0	5.12E+07
Serine/threonine-protein phosphatase;Serine/threonine-protein phosphatase 2A catalytic subunit alpha isoform;Serine/threonine-protein phosphatase 2A catalytic subunit beta isoform	0	3.52E+07

40S ribosomal protein S24	0	1.24E+08
40S ribosomal protein S3	0	8.25E+08
Mitogen-activated protein kinase 1;Mitogen-activated protein kinase;Mitogen-activated protein kinase 3	0	5.64E+07
Dynein light chain 2, cytoplasmic;Dynein light chain 1, cytoplasmic	0	0
40S ribosomal protein S17	0	3.50E+07
60S ribosomal protein L22	0	1.06E+08
Actin, alpha skeletal muscle;Actin, alpha cardiac muscle 1;Actin, aortic smooth muscle;Actin, gamma-enteric smooth muscle	0	5.34E+08
Tubulin alpha-1A chain;Tubulin alpha-3 chain	0	5.88E+07
Protein kinase C beta type	0	2.85E+07
14-3-3 protein eta	0	0
Ubiquitin carboxyl-terminal hydrolase;Probable ubiquitin carboxyl-terminal hydrolase FAF-X	0	7.94E+07
Vasodilator-stimulated phosphoprotein	0	1.02E+08
Nascent polypeptide-associated complex subunit alpha;Nascent polypeptide-associated complex subunit alpha, muscle-specific form	0	0
ADP-ribosylation factor 5	0	6732700
DNA helicase;DNA replication licensing factor MCM6	0	2.10E+07
Mannan-binding lectin serine protease 1;Mannan-binding lectin serine protease 1 heavy chain;Mannan-binding lectin serine protease 1 light chain	0	5.82E+07
Cytochrome b-c1 complex subunit 6, mitochondrial	0	2.58E+08
Heterogeneous nuclear ribonucleoprotein U-like protein 2	0	9.84E+07
DNA topoisomerase 2-alpha;DNA topoisomerase 2;DNA topoisomerase 2-beta	0	6.96E+07
Aquaporin-1	0	9.19E+07
Nucleobindin-1	0	5.69E+07
Transcription factor p65	0	1.15E+07
DNA topoisomerase 1	0	1.29E+07
Succinyl-CoA ligase subunit beta;Succinyl-CoA ligase [ADP-forming] subunit beta, mitochondrial	0	3.40E+07
Ras-related protein Rab-27B	0	0
Short-chain specific acyl-CoA dehydrogenase, mitochondrial	0	4.42E+07
GTP-binding protein SAR1b;GTP-binding protein SAR1a	0	9.56E+07
RNA-binding protein 39	0	7.14E+07
ATP-dependent RNA helicase DDX39A	0	3.05E+07
Non-syndromic hearing impairment protein 5 homolog	0	5554800
Prolyl endopeptidase	0	0
Tapasin	0	7.86E+08
Phosphatidylinositol-binding clathrin assembly protein	0	1.41E+07

Replication protein A 32 kDa subunit	0	4.18E+07
ATP synthase subunit O, mitochondrial	0	2.98E+08
Non-POU domain-containing octamer-binding protein	0	2.06E+08
Serine hydroxymethyltransferase	0	6.03E+08
	0	0
DnaJ homolog subfamily A member 2	0	6.78E+07
	0	5090800
Transmembrane emp24 domain-containing protein 9	0	4.75E+07
Serine/arginine-rich splicing factor 7	0	6.91E+07
Heterogeneous nuclear ribonucleoprotein M	0	5.94E+08
Chloride intracellular channel protein;Chloride intracellular channel protein 1	0	4.80E+08
Pyrroline-5-carboxylate reductase;Pyrroline-5-carboxylate reductase 2	0	0
ATP synthase F(0) complex subunit B1, mitochondrial	0	6.22E+08
Actin-related protein 2/3 complex subunit 5	0	0
Replication factor C subunit 3	0	0
AP-3 complex subunit beta-1	0	0
Acetyl-CoA acetyltransferase, mitochondrial	0	3.04E+08
26S proteasome non-ATPase regulatory subunit 12	0	2.85E+07
Malic enzyme;NAD-dependent malic enzyme, mitochondrial	0	0
Probable ATP-dependent RNA helicase DDX17	0	0
Translocon-associated protein subunit alpha	0	2.12E+08
Translocon-associated protein subunit delta	0	1.70E+08
Dehydrogenase/reductase SDR family member 1	0	1.62E+07
C-1-tetrahydrofolate synthase, cytoplasmic;Methylenetetrahydrofolate dehydrogenase;Methenyltetrahydrofolate cyclohydrolase;Formyltetrahydrofolate synthetase;C-1-tetrahydrofolate synthase, cytoplasmic, N-terminally processed	0	1.26E+08
Delta-1-pyrroline-5-carboxylate synthase;Glutamate 5-kinase;Gamma-glutamyl phosphate reductase	0	3.58E+07
Acid ceramidase;Acid ceramidase subunit alpha;Acid ceramidase subunit beta	0	4.57E+07
Aldehyde dehydrogenase;Aldehyde dehydrogenase family 3 member B1	0	3.44E+08
cAMP-dependent protein kinase type I-alpha regulatory subunit;cAMP-dependent protein kinase type I-alpha regulatory subunit, N-terminally processed	0	0
Uncharacterized protein C17orf62 homolog	0	8.96E+07
Alanine--tRNA ligase, cytoplasmic	0	4648800
Splicing factor, proline- and glutamine-rich	0	0
Heat shock 70 kDa protein 4	0	5.69E+07

Matrix metalloproteinase-25	0	0
DNA helicase;DNA replication licensing factor MCM7	0	1.44E+08
Nucleophosmin	0	1.81E+08
Retinoid-inducible serine carboxypeptidase	0	0
Beta-1,4-galactosyltransferase 5	0	2.71E+07
Lamin-B receptor	0	5.79E+08
Succinyl-CoA:3-ketoacid-coenzyme A transferase;Succinyl-CoA:3-ketoacid coenzyme A transferase 1, mitochondrial	0	8.47E+07
B-cell receptor-associated protein 31	0	0
6-phosphogluconate dehydrogenase, decarboxylating	0	1.80E+08
Transcription intermediary factor 1-beta	0	5.85E+07
Flotillin-2	0	3.68E+08
Urocanate hydratase	0	2.23E+07
Mannan-binding lectin serine protease 2;Mannan-binding lectin serine protease 2 A chain;Mannan-binding lectin serine protease 2 B chain	0	7.21E+07
Pleckstrin homology domain-containing family B member 2	0	4.09E+07
Amino acid transporter	0	5.76E+07
Derlin-1	0	4.65E+07
Dehydrogenase/reductase SDR family member 4	0	5.58E+07
Nucleolar protein 56	0	0
3-ketoacyl-CoA thiolase, mitochondrial	0	2.22E+08
Nuclear pore complex protein Nup155	0	1.93E+08
Nucleolar RNA helicase 2	0	3.61E+07
Calcium uniporter protein, mitochondrial	0	1.25E+08
Neutrophil elastase	0	4.57E+07
Myosin-4	0	3.73E+08
Endoplasmic reticulum metalloproteinase 1	0	3.63E+07
Sulfurtransferase;3-mercaptopyruvate sulfurtransferase	0	2.94E+07
NADH dehydrogenase [ubiquinone] iron-sulfur protein 8, mitochondrial	0	4.92E+07
	0	0
Monofunctional C1-tetrahydrofolate synthase, mitochondrial	0	1.29E+08
2,4-dienoyl-CoA reductase, mitochondrial	0	0
ERO1-like protein alpha	0	3.11E+07
ATP synthase subunit delta, mitochondrial	0	8.94E+07
Translocon-associated protein subunit gamma	0	6.13E+07
Elongation factor 1-gamma	0	2.06E+08
10 kDa heat shock protein, mitochondrial	0	2.35E+08
60S ribosomal protein L38	0	5.89E+07

Coactosin-like protein	0	1.41E+08
Ras-related protein Rab-27A	0	1.96E+08
Complement C1r-B subcomponent;Complement C1r-B subcomponent heavy chain;Complement C1r-B subcomponent light chain;Complement C1r-A subcomponent;Complement C1r-A subcomponent heavy chain;Complement C1r-A subcomponent light chain	0	5.07E+07
Transmembrane 9 superfamily member 3	0	4.36E+07
Engulfment and cell motility protein 1	0	2.11E+07
V-type proton ATPase subunit G 1	0	6.39E+07
Cytochrome b-c1 complex subunit 9	0	3.79E+07
ATP-binding cassette sub-family F member 1	0	9.89E+07
Dedicator of cytokinesis protein 2	0	8.03E+08
Unconventional myosin-Ig	0	2.21E+08
Mitochondrial 2-oxoglutarate/malate carrier protein	0	2.04E+08
2-oxoglutarate dehydrogenase, mitochondrial	0	3.03E+08
Histone-binding protein RBBP4	0	1.03E+07
ATP-binding cassette sub-family B member 7, mitochondrial	0	4.28E+07
Rho GDP-dissociation inhibitor 2	0	2.99E+07
ATP-dependent RNA helicase DDX19A	0	5.25E+07
Serine/arginine-rich splicing factor 2	0	6.54E+07
Regucalcin	0	8.65E+07
	0	0
UDP-glucose:glycoprotein glucosyltransferase 1	0	2.85E+07
Leucine-rich PPR motif-containing protein, mitochondrial	0	1.70E+07
Toll-like receptor 13	0	0
E2/E3 hybrid ubiquitin-protein ligase UBE2O	0	0
Leucine--tRNA ligase, cytoplasmic	0	0
Cullin-associated NEDD8-dissociated protein 1	0	1.47E+08
Calcium/calmodulin-dependent protein kinase type II subunit gamma	0	0
	0	5.13E+07
40S ribosomal protein S12	0	3.90E+08
Serine/threonine-protein phosphatase 2A 65 kDa regulatory subunit A alpha isoform;Serine/threonine-protein phosphatase 2A 65 kDa regulatory subunit A beta isoform	0	2.78E+08
Up-regulated during skeletal muscle growth protein 5	0	3.90E+07
28S ribosomal protein S9, mitochondrial	0	7102900
Oligosaccharyltransferase complex subunit OSTC	0	4.83E+07
	0	6.97E+08
Protein DEK	0	0
Glutaredoxin-related protein 5, mitochondrial	0	4.78E+07

Unconventional myosin-If	0	3.30E+08
Calcium-binding mitochondrial carrier protein Aralar1;Calcium-binding mitochondrial carrier protein Aralar2	0	9.53E+07
Enoyl-CoA hydratase, mitochondrial	0	2.86E+08
Protein RCC2	0	0
Neutral cholesterol ester hydrolase 1	0	1.60E+08
Calcium-binding mitochondrial carrier protein SCaMC-1	0	0
Cytoskeleton-associated protein 4	0	1.55E+08
Asparagine--tRNA ligase, cytoplasmic	0	4.15E+07
Protein disulfide-isomerase TMX3	0	1.03E+08
Choline transporter-like protein 2	0	0
26S proteasome non-ATPase regulatory subunit 6	0	3.47E+07
Endoplasmic reticulum aminopeptidase 1	0	1.99E+07
U4/U6 small nuclear ribonucleoprotein Prp31	0	3.58E+07
Structural maintenance of chromosomes protein 5	0	0
Lysophospholipid acyltransferase 7	0	6.52E+07
Succinate dehydrogenase [ubiquinone] flavoprotein subunit, mitochondrial	0	4.41E+08
BRO1 domain-containing protein BROX	0	4.44E+07
Presequence protease, mitochondrial	0	2.71E+07
Aminoacyl tRNA synthase complex-interacting multifunctional protein 2	0	3.15E+07
Vacuolar protein sorting-associated protein 37C	0	2.26E+07
Carboxymethylenebutenolidase homolog	0	1.98E+07
Peptidyl-tRNA hydrolase 2, mitochondrial	0	2.69E+07
Rotatin	0	6.40E+07
Complement component 1 Q subcomponent-binding protein, mitochondrial	0	2.64E+08
Grancalcin	0	9.28E+07
Isocitrate dehydrogenase [NAD] subunit, mitochondrial	0	7.68E+07
Long-chain fatty acid transport protein 4	0	9.05E+07
V-type proton ATPase subunit a	0	1.83E+08
Sn1-specific diacylglycerol lipase beta	0	4.19E+07
Mitochondrial amidoxime reducing component 2	0	5764400
Trifunctional enzyme subunit beta, mitochondrial;3-ketoacyl-CoA thiolase	0	2.24E+08
NADH dehydrogenase [ubiquinone] 1 alpha subcomplex subunit 10, mitochondrial	0	9.56E+07
Electron transfer flavoprotein subunit alpha, mitochondrial	0	2.00E+08
Pre-mRNA-processing-splicing factor 8	0	9.27E+07
Cytochrome c oxidase subunit 6C	0	2.19E+08
ATP synthase subunit g, mitochondrial	0	7.18E+07

Microsomal glutathione S-transferase 3	0	3.86E+07
Cytosol aminopeptidase	0	5.00E+07
Cytochrome b-c1 complex subunit 8	0	1.40E+08
Trafficking protein particle complex subunit 5	0	0
Cytochrome b-c1 complex subunit 7	0	2.18E+08
NADH dehydrogenase [ubiquinone] 1 beta subcomplex subunit 9	0	0
NADH dehydrogenase [ubiquinone] 1 beta subcomplex subunit 7	0	0
Dehydrogenase/reductase SDR family member 7	0	8.47E+07
Alpha-soluble NSF attachment protein	0	3.79E+07
Citrate synthase, mitochondrial;Citrate synthase	0	3.30E+08
Mitochondrial pyruvate carrier 2	0	5.21E+07
Cytochrome c1, heme protein, mitochondrial	0	3.24E+08
Microfibril-associated glycoprotein 4	0	3.48E+07
Eukaryotic translation elongation factor 1 epsilon-1	0	6.32E+07
Cysteine and histidine-rich domain-containing protein 1	0	4252500
60S ribosomal protein L34	0	0
Coronin-7;Coronin	0	2.94E+07
NADH dehydrogenase [ubiquinone] flavoprotein 2, mitochondrial	0	0
Isocitrate dehydrogenase [NAD] subunit alpha, mitochondrial	0	7.75E+07
Protein FAM162A	0	2.55E+07
Adipocyte plasma membrane-associated protein	0	6.93E+07
Charged multivesicular body protein 4b	0	5.09E+07
Mast cell-expressed membrane protein 1	0	1.93E+08
Tumor necrosis factor alpha-induced protein 8-like protein 2	0	1.86E+07
Transmembrane protein 43	0	2.79E+08
Proline-5-carboxylate reductase 3	0	3.86E+07
Multifunctional protein ADE2;Phosphoribosylaminoimidazole-succinocarboxamide synthase;Phosphoribosylaminoimidazole carboxylase	0	1.24E+08
Persulfide dioxygenase ETHE1, mitochondrial	0	1.64E+08
Protein XRP2	0	2.09E+07
Importin-7	0	3.51E+07
Estradiol 17-beta-dehydrogenase 11	0	9.36E+07
NADH dehydrogenase [ubiquinone] 1 alpha subcomplex subunit 13	0	6.95E+07
E3 SUMO-protein ligase RanBP2	0	2.07E+07
Phosphatidylinositol 3,4,5-trisphosphate 5-phosphatase 1	0	2.98E+07
Inositol-3-phosphate synthase 1	0	1.14E+07

ATP-binding cassette sub-family B member 10, mitochondrial	0	5.27E+07
Placenta-specific gene 8 protein	0	1.97E+08
	0	4.24E+07
Hypoxia up-regulated protein 1	0	2.22E+08
RAS guanyl-releasing protein 2	0	2.33E+07
Mitochondrial dicarboxylate carrier	0	2.02E+07
Transient receptor potential cation channel subfamily V member 2	0	0
Succinyl-CoA ligase [ADP/GDP-forming] subunit alpha, mitochondrial	0	4.15E+07
Nuclear pore complex protein Nup160	0	3.99E+07
Spliceosome RNA helicase Ddx39b	0	2.13E+08

Online Table II: List of primers used

primer list		
primer		sequence (5'-3')
ICAM-1	Forward	GTGATGCTCAGGTATCCATCCA
	Reverse	CACAGTTCTCAAAGCACAGCG
VCAM-1	Forward	AGTTGGGGATTTCGGTTGTTCT
	Reverse	CCCCTCATTCCTTACCACCC
P-selectin	Forward	GAAAGGGCTGATTGTGACCCC
	Reverse	AGTAGTTCCGCACTGGGTACA
E-selectin	Forward	ATGAAGCCAGTGCATACTGTC
	Reverse	CGGTGAATGTTTCAGATTGGAGT
mGAPDH	Forward	TCAGGAGAGTGTTTCCTCGTC
	Reverse	CCCTGTTGCTGTAGCCGTAT
hGAPDH	Forward	GAAAGCCTGCCGGTGAATA
	Reverse	TTCCCGTTCTCAGCCTTGAC
mIL-10	Forward	CAGCCGGGAAGACAATAACTG
	Reverse	CCGCAGCTCTAGGAGCATGT
m 18S	Forward	ACGAGACTCTGGCATGCTAACTAG
	Reverse	CGCCACTTGTCCCTCTAAGAA
mTNFa	Forward	CTGAGTTCTGCAAAGGGAGAG
	Reverse	CCTCAGGGAAGAATCTGGAAAG
mIL-1b	Forward	CCTCACAAGCAGAGCACAA
	Reverse	CCAGCCCATACTTTAGGAAGAC
mILK	Forward	ACTACTTGGGGTGCCTTGGA
	Reverse	CAAACCCGTCTCTGCGATCTCT
mVEGFR	Forward	TGCTGAAAGAGGGCGCTACT
	Reverse	TGCCGATGTGAATTAGGATCTTG
mMCP-1	Forward	CTTCCTCCACCACCATGCA

	Reverse	CCAGCCGGCAACTGTGA
--	---------	-------------------

Online Table III: List and source of reagents used

list of reagents	
Item	Cat #
Amicon Ultra-15 Centrifugal Filter Units	UFC910008
anti-ILK antibody	ab76468
beta-actin antibody	sc-47778
CD63 Antibody (H-193)	sc-15363
control siRNA	sc-37007
EGM-2 Endothelial Cell Growth Medium-2 BulletKit	cc-3162
Ethylenediaminetetraacetic Acid (0.5M Solution/pH 8.0)	BP2482100
Exosome depleted FBS	A2720801
flotillin-1 antibody	sc-74566
Gelatin from bovine skin	G9391
Gibco™ (Phosphate Buffered Saline) Solution, pH 7.4	10010023
HEPES (1 M)	15630080
HSC 70 Antibody (B-6)	sc-7298
HUVEC cell line	ATCC® CRL-1730™
ILK siRNA (m)	sc-35667
in situ cell death detection kit, TMR red	12156792910
Lipofectamine® RNAiMAX Transfection Reagent	13778150
MCEC cell line	CLU510
NF-κB p65 (L8F6) Mouse mAb	# 6956S
Opti-MEM® I Reduced Serum Medium	31985070
Penicillin-Streptomycin (10,000 U/mL)	15140122
Phospho-NF-κB p65 (Ser536) (93H1) Rabbit mAb	#3033

Pierce™ BCA Protein Assay Kit	23225
Recombinant Mouse TNF-alpha (aa 80-235) Protein, CF	410-MT-010/CF
Standard Corning Matrigel Matrix	356234

REFERENCES

1. Garikipati VN, Krishnamurthy P, Verma SK, Khan M, Abramova T, Mackie AR, Qin G, Benedict C, Nickoloff E, Johnson J, Gao E, Losordo DW, Houser SR, Koch WJ and Kishore R. Negative Regulation of miR-375 by Interleukin-10 Enhances Bone Marrow-Derived Progenitor Cell-Mediated Myocardial Repair and Function After Myocardial Infarction. *Stem Cells*. 2015;33:3519-29.