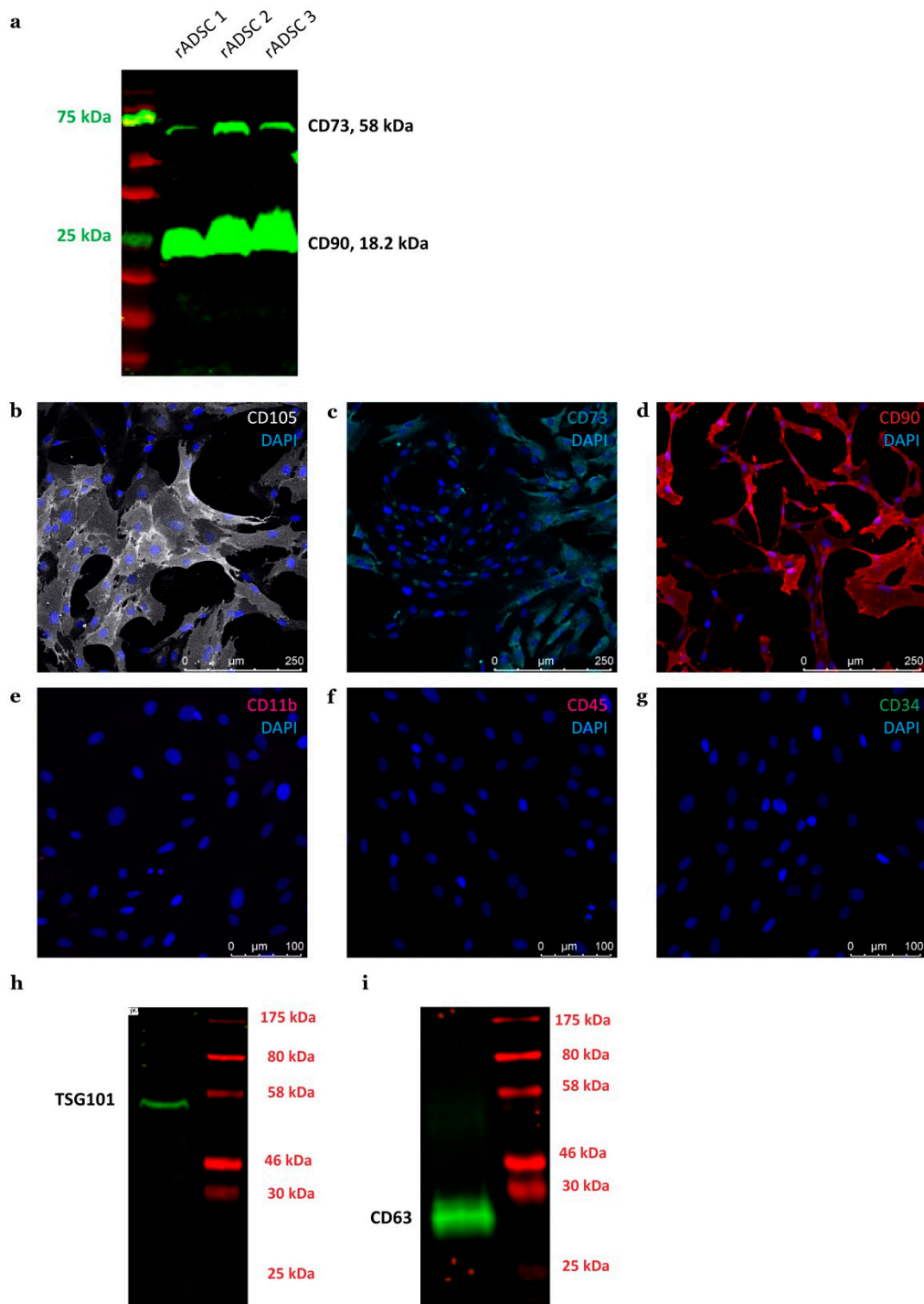


SUPPLEMENTARY FIGURE



Supplementary figure 1. Characterisation of rADSCs and rADSC-EVs. Whole Western blot for three rADSC donors double stained against CD73 and CD90 (a). Immunofluorescence images of p3 rADSC cultures stained for CD105 (b), CD73 (c) and CD90 (d), note that positive cells can be clearly discriminated from negative cells. Immunofluorescence analysis of p3 rADSC cultures stained for CD11b (e), CD45 (f) and CD34 (g); note that no positive cells were observed. Whole Western blots for pooled rADSC-EV fractions stained against TSG101 (h) and CD63 (i).

SUPPLEMENTARY TABLES

Supplementary Table 1 | Antibodies

1 st Antibodies				
Reactivity	Species	company	dilution	note
S100	rabbit	DAKO	1:200	permeabilization
SOX10	mouse	Santa Cruz	1:50	permeabilization
vimentin	chicken	Invitrogen	1:200	permeabilization
NGFR	rabbit	CellSignaling	1:400	
CD90	mouse	Santa Cruz	1:50	
CD73	rabbit	CellSignaling	1:50	
CD105	goat	R&D	1:100	
CD11b	rat	ThermoFisher	1:100	
CD45	rabbit	Santa Cruz	1:30	
CD34	mouse	Santa Cruz	1:30	
TSG101	rabbit	abcam	1:500	
CD63	mouse	abcam	1:500	

2 nd Antibodies			
Reactivity	Fluorophore	company	dilution
rabbit	AF488Plus	Invitrogen	1:600
mouse	AF594	Invitrogen	1:300
mouse	AF488	Invitrogen	1:300
chicken	DL650	Invitrogen	1:400
goat	AF546	Invitrogen	1:300
rat	AF594	Invitrogen	1:400
rabbit	IRDye 800CW	LI-COR	1:15000
mouse	IRDye 800CW	LI-COR	1:15000

Supplementary Table 2 | Primer sequences used for RT-PCR

Gene	Primer sequence
NGF	Foward: ATCGCTCTCCTTCACAGAGTTT
	Reverse: TGTACGGTTCTGCCTGTACG
BDNF	Foward: TACCTGGATGCCGCAAACAT
	Reverse: TGGCCTTTTGATACCGGGAC
CNTF	Foward: ATGGCTTTCGCAGAGCAAAC
	Reverse: CAACGATCAGTGCTTGCCAC
GDNF	Foward: CGCTGACCAGTGACTCCAAT
	Reverse: TGGTAAACCAGGCTGTCGTC