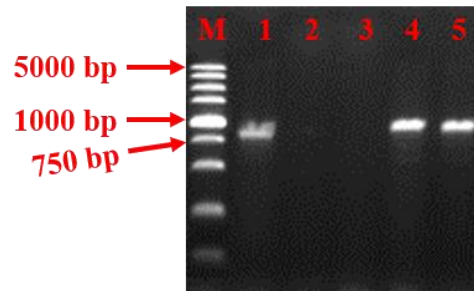


Supplementary Figure 1. Sucrose promotes axillary bud growth in *Chrysanthemum morifolium*. (A) 0 mM sucrose treatment; (B) 20 mM sucrose treatment. Scale bars: 1 mm; red arrows: axillary buds.



Supplementary Figure 2. Gel electrophoresis with the products of PCR analysis of genomic DNA (primers pMDC43-F and CmSWEET17-R). M: DNA Marker 5000; 1: plasmid pMDC43-CmSWEET17; 2: H₂O; 3: Wild-type; 4: OX-39; 5: OX-40.

Supplementary Table 1. Sequences of primers used in the present study.

Primer name	Sequence (5' to 3')
<i>CmSWEET17-F</i>	ATGGCTACCACCATTAGCTTC
<i>CmSWEET17-R</i>	TCATATCTTTTCAATCGACG
<i>CmSWEET17-1A-F</i>	TTCAGTCGACATGGCTACCACCATTAGCTT
<i>CmSWEET17-1A-R</i>	GAGTGCGGCCGCGATATCTTTTCAATCGACG
pMDC43-F	TTACCTGTCCACACAATCTGCC
<i>CmSUC2-Q-F</i>	GGTGTCTCCACCGGTGACA
<i>CmSUC2-Q-R</i>	AATACCTATGGCGCGTGGTT
<i>CmSUC3-Q-F</i>	GGCATGCTTTCTCGTCATT
<i>CmSUC3-Q-R</i>	AAGGTTGAACCACAAGACCTGTAAT
<i>CmSUC4-Q-F</i>	GCATGCCGTTAGCTGTTACG
<i>CmSUC4-Q-R</i>	ACTCAATCCGTGAGGCTACCA
<i>CmHXK1-Q-F</i>	AAACAATCGTGGAGGTATGTGAC
<i>CmHXK1-Q-R</i>	TCCGGCAGCCGAGAGA
<i>CmHXK2-Q-F</i>	GCGGGTGATAGACACCGAAT
<i>CmHXK2-Q-R</i>	ACGTGCCTGACATCAAGTCTTG
<i>CmHXK3-Q-F</i>	TGAGCGAGCTGATGCAGTAATA
<i>CmHXK3-Q-R</i>	TTGATAACCATGCCTCCTGAAGT
<i>CmSnRK1-Q-F</i>	TGAAATGCAGGTGGGTTTCCT
<i>CmSnRK1-Q-R</i>	GAGCTCATGGCACCATCATTC
<i>CmTOR-Q-F</i>	CATTCTCCATGTGCTCGAA
<i>CmTOR-Q-R</i>	TGAAGAAATTGAGCGGAAGATG
<i>CmSWEET1-Q-F</i>	CGTCTTTGCTCTCCATGGAA
<i>CmSWEET1-Q-R</i>	AATGGCTGCAGCGAAACC
<i>CmSWEET2-Q-F</i>	GCTGGGAGTTTTTGGCCTATT
<i>CmSWEET2-Q-R</i>	TTCAAGGTCTGTTACAAGCATGCT
<i>CmSWEET3-Q-F</i>	GTTGCGAATGGCTGTAGGACTA
<i>CmSWEET3-Q-R</i>	TGGGAGCAGCATAAAGCATAA
<i>CmSWEET4-Q-F</i>	AATGCCATTTGTTACCCAA
<i>CmSWEET4-Q-R</i>	GGCCCCAGATCCATTGGTA
<i>CmSWEET9-Q-F</i>	TGTTGGATTTCGGATTGATCGT
<i>CmSWEET9-Q-R</i>	CGATGCACGCCTTTTGC
<i>CmSWEET10-Q-F</i>	TTGTCGGATTTGGATTGATTGTT
<i>CmSWEET10-Q-R</i>	CACACCACGGGTAACTCCACTT
<i>CmSWEET11-Q-F</i>	TCTGATATTCTTCCGGCTGTCA
<i>CmSWEET11-Q-R</i>	GGCTATGTGGCCATCATCTTG
<i>CmSWEET16-Q-F</i>	AGCGTAGAGTACATGCCGTTTCT
<i>CmSWEET16-Q-R</i>	TCCAAACCCCGCCATTAA
<i>CmSWEET17-Q-F</i>	TTGGTGGTGTGTAGCGGTG
<i>CmSWEET17-Q-R</i>	TATCAGAAGTCGTTTCGCTACCAT