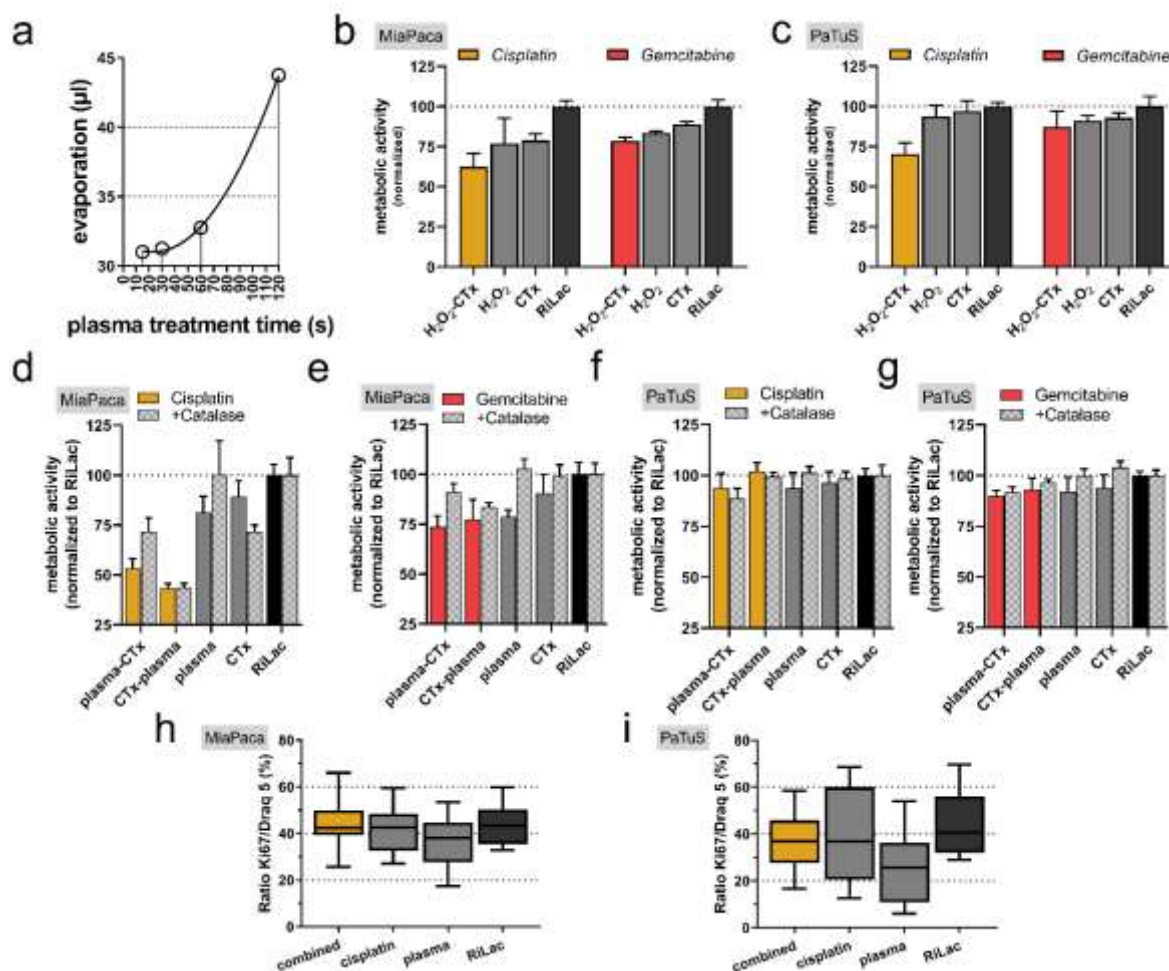


Article

Gas Plasma-Conditioned Ringer's Lactate Enhances the Cytotoxic Activity of Cisplatin and Gemcitabine in Pancreatic Cancer *In Vitro* and *In Ovo*

Kim-Rouven Liedtke, Eric Freund, Maraike Hermes, Stefan Oswald, Claus-Dieter Heidecke, Lars-Ivo Pardecke and Sander Bekeschus

Supplementary Materials



Supplementary Figure 1: Additional information. (a) The amount of evaporated liquid of 100 µl plasma-treated *Ringer's* solution; (b) the metabolic activity of MiaPaca cells exposed to treatment solutions containing supplemented H₂O₂ instead of plasma-treated *Ringer's*; (c) the metabolic activity of PaTuS cells exposed to treatment solutions containing supplemented H₂O₂ instead of plasma-treated RiLac; (d,e) the metabolic activity of MiaPaca cells after exposure to treatment solutions with cisplatin and gemcitabine ± catalase; (f,g) the metabolic activity of PaTuS cells after exposure to treatment solutions with cisplatin and gemcitabine ± catalase at t = 48 h; (h) amount of proliferating cancer cells (Ki67⁺/Draq5⁺) in kryo-sections from *in ovo*-grown pancreatic tumors out of MiaPaca cells; (i) amount of proliferating cancer cells (Ki67⁺/Draq5⁺) in kryo-sections from *in ovo*-grown pancreatic tumors out of PaTuS cells. Data are (a–c) representatives or (d–g) out of four independent experiments and are presented as mean + SEM, or (h,i) are from independent experiments with between eight and thirteen eggs per group presented as median ± min and max.



© 2020 by the authors. Licensee MDPI, Basel, Switzerland. This article is an open access article distributed under the terms and conditions of the Creative Commons Attribution (CC BY) license (<http://creativecommons.org/licenses/by/4.0/>).