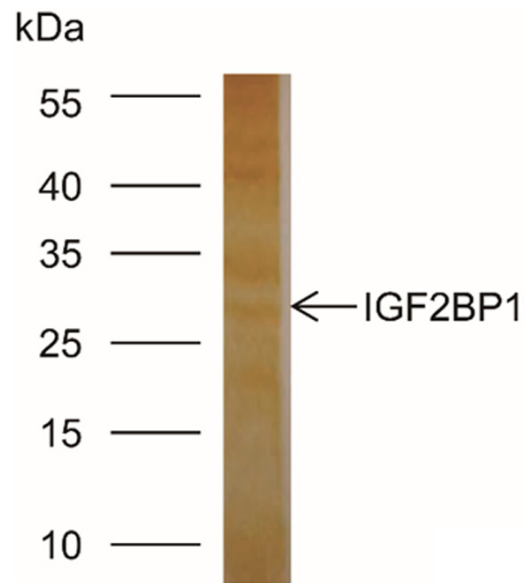


NEAT1 stabilizes ELF3 mRNA

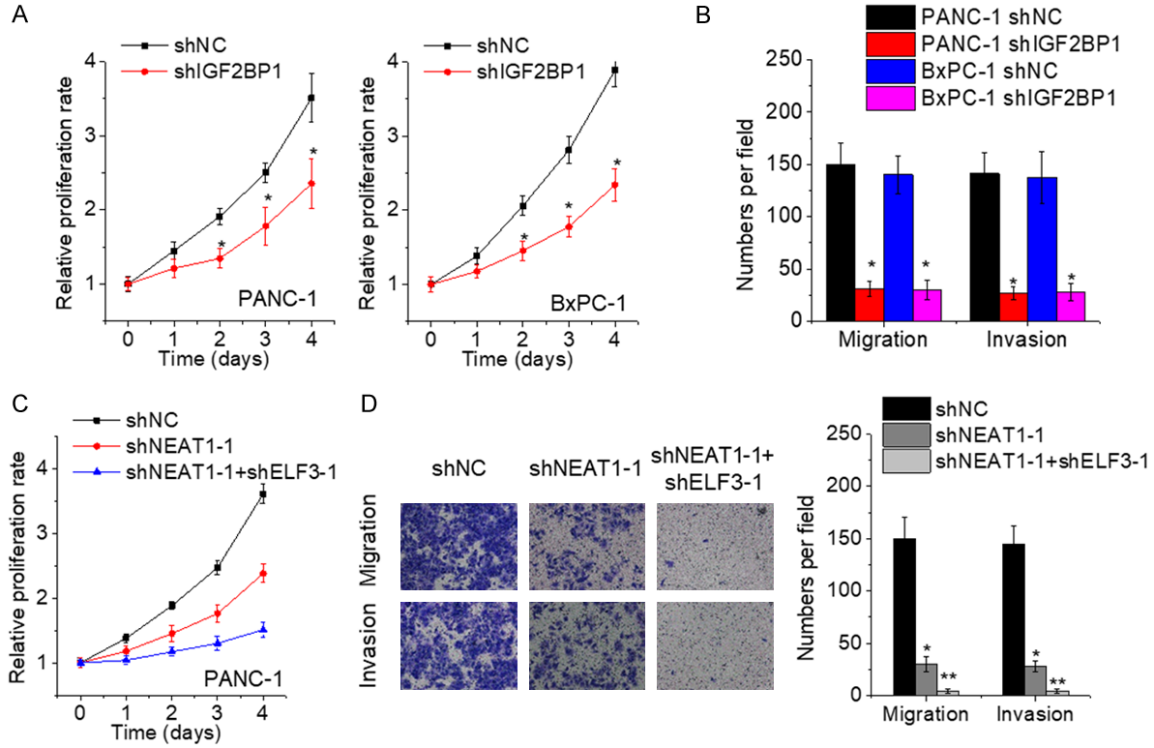
Gene	Fold enrichment	p value
ELF3	20.413	1.05E-09
UBE2T	15.123	1.73E-07
PAX8	10.672	4.23E-05
DLC3	9.578	3.18E-04
USP9X	8.412	2.67E-04
NF45	6.226	1.09E-03
VEGFA	4.128	8.41E-02
UBE2C	4.011	4.13E-02

Supplementary Figure 1. The mRNA pulled down by NEAT1 was subjected to RNA sequencing analysis. ELF3 mRNA was one of the most enriched transcripts.



Supplementary Figure 2. The RNA pull-down followed by mass spectrometry analysis identified IGF2BP1 as a potential NEAT1-interacting protein.

NEAT1 stabilizes ELF3 mRNA



Supplementary Figure 3. NEAT1 exerts oncogenic effects partially via ELF3. A. The proliferation of control and IGF2BP1-depleted PANC-1 and BxPC-1 cells was detected by CCK-8 assay. B. The cell migration and invasion of control and IGF2BP1-depleted PANC-1 and BxPC-1 cells was detected by transwell assay. C. Depletion of ELF3 expression strengthened the proliferation inhibition by NEAT1 knockdown in PANC-1 cells. D. Depletion of ELF3 expression strengthened the migration and invasion inhibition by NEAT1 knockdown in PANC-1 cells.