

## S5 Appendix. Multispecies coalescent approach

### A comparative approach for species delimitation based on multiple methods of multi-locus DNA sequence analysis: a case study of the genus *Giraffa* (Mammalia, Cetartiodactyla)

Alice Petzold<sup>1,2</sup>, Alexandre Hassanin<sup>1,2\*</sup>

1 Institut de Systématique, Évolution, Biodiversité (ISYEB), Sorbonne Université, MNHN, CNRS, EPHE, Paris, France

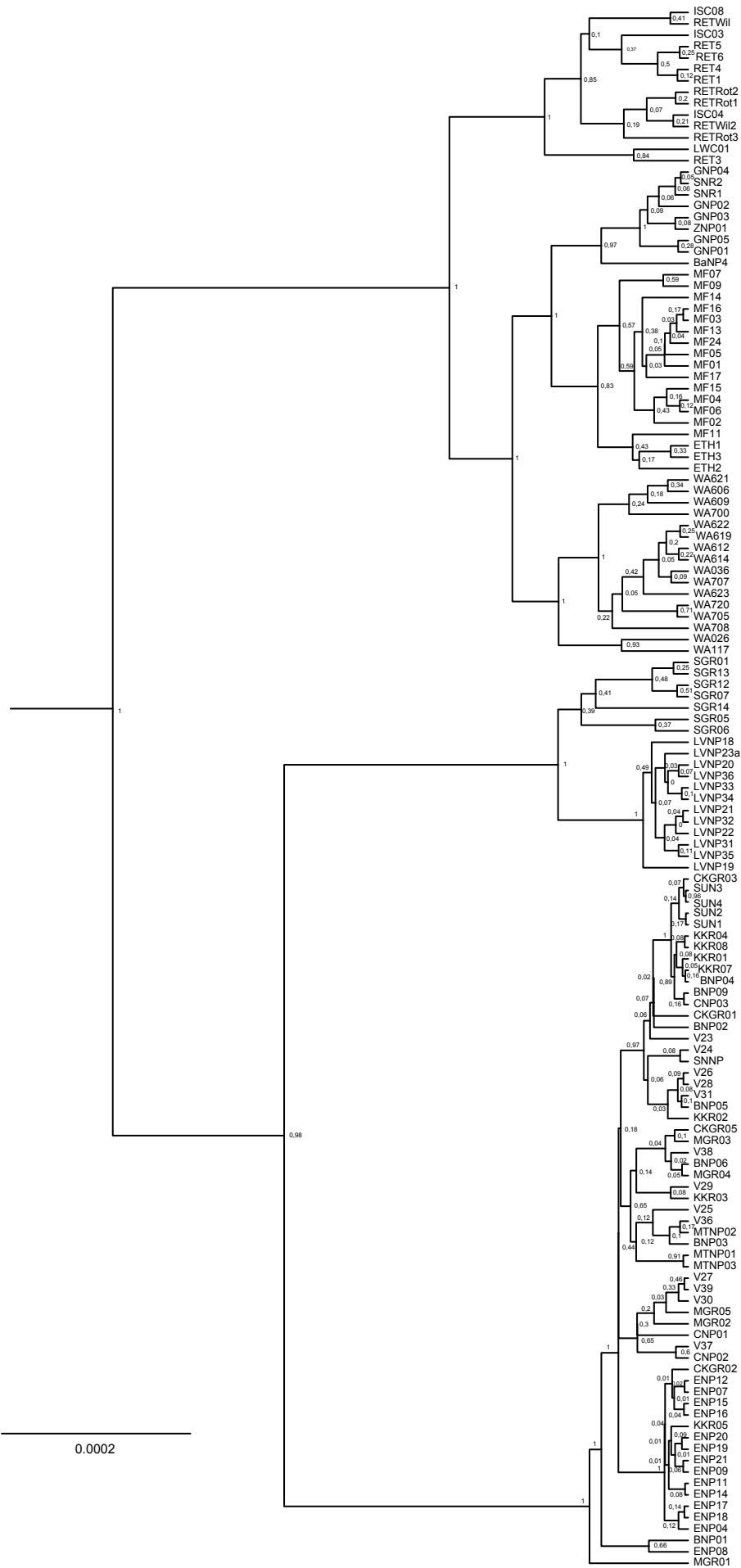
2 Muséum national d'Histoire naturelle, CP51, 55 rue Buffon - 75005 Paris, France

\*Correspondence: [alexandre.hassanin@mnhn.fr](mailto:alexandre.hassanin@mnhn.fr)

**Table A.** Summary of BPP results obtained in the analyses of the dataset including 21 introns for 66 giraffes.

Putative species  speciesmodelprior	Bayesian Phylogenetics and Phylogeography (PP)											
	3S			4S			5S			6S		
	1	2	3	1	2	3	1	2	3	1	2	3
(C) <i>camelopardalis</i>	-	-	-	-	-	-	-	-	-	-	-	-
(R1) <i>rothschildi</i>	-	-	-	-	-	-	-	-	-	-	-	-
(A1) <i>antiquorum</i>	-	-	-	-	-	-	-	-	-	-	-	-
(P1) <i>peralta</i>	-	-	-	-	-	-	1.0	1.0	1.0	1.0	1.0	1.0
(A1 R1) <i>antiquorum &amp; rothschildi</i>	-	-	-	-	-	-	-	-	-	-	-	-
(C R1) <i>camelopardalis &amp; rothschildi</i>	-	-	-	-	-	-	-	-	-	-	-	-
(C A1) <i>camelopardalis &amp; antiquorum</i>	-	-	-	-	-	-	-	-	-	-	-	-
(C R1 A1) <i>camelopardalis, rothschildi &amp; antiquorum</i>	-	-	-	-	-	-	1.0	1.0	1.0	1.0	1.0	1.0
(C R1 A1 P1) <i>Giraffa camelopardalis sensu stricto B</i>	-	-	-	1.0	1.0	1.0	-	-	-	-	-	-
(R2) <i>reticulata</i>	-	-	-	1.0	1.0	1.0	1.0	1.0	1.0	1.0	1.0	1.0
(C R1 A1 P1 R2) <i>Giraffa camelopardalis sensu stricto A</i>	1.0	1.0	1.0	-	-	-	-	-	-	-	-	-
(T1) <i>tippelskirchi</i>	-	-	-	-	-	-	-	-	-	0.26	0.4	0.34
(T2) <i>thornicrofti</i>	-	-	-	-	-	-	-	-	-	0.26	0.4	0.34
(T1 T2) <i>Giraffa tippelskirchi</i>	1.0	1.0	1.0	1.0	1.0	1.0	1.0	1.0	1.0	0.74	0.6	0.65
(G) <i>giraffa</i>	-	-	-	-	-	-	-	-	-	-	-	-
(A2) <i>angolensis</i>	-	-	-	-	-	-	-	-	-	-	-	-
(G A2) <i>Giraffa giraffa</i>	1.0	1.0	1.0	1.0	1.0	1.0	1.0	1.0	1.0	1.0	1.0	1.0

PP: average posterior probability values; “-“: not found.



**Fig A.** MSC species-tree constructed from the nuDNA-G274O6 dataset using \*BEAST with the posterior probability values indicated for each node (outgroup taxa *Bos*, *Ovis*, *Okapia* not shown).