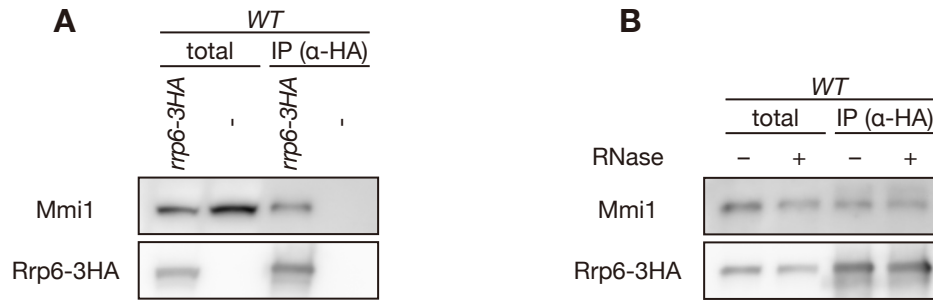


S4 Fig.



S4 Fig. Rrp6 physically interacts with Mmi1.

(A) Co-immunoprecipitation of Rrp6 and Mmi1 in wild-type cells. Native cell extracts were prepared from exponentially growing cells expressing Rrp6-3HA from a plasmid in MM medium and subjected to immunoprecipitation with anti-HA antibody. Cells carrying an empty vector were used as a negative control. Precipitates and 10% total cell extracts were then immunoblotted with anti-Mmi1 and anti-HA antibodies.

(B) The effect of RNase treatment on interaction between Rrp6 and Mmi1. Native cell extracts were incubated with or without RNase and subjected to immunoprecipitation with anti-HA antibody.