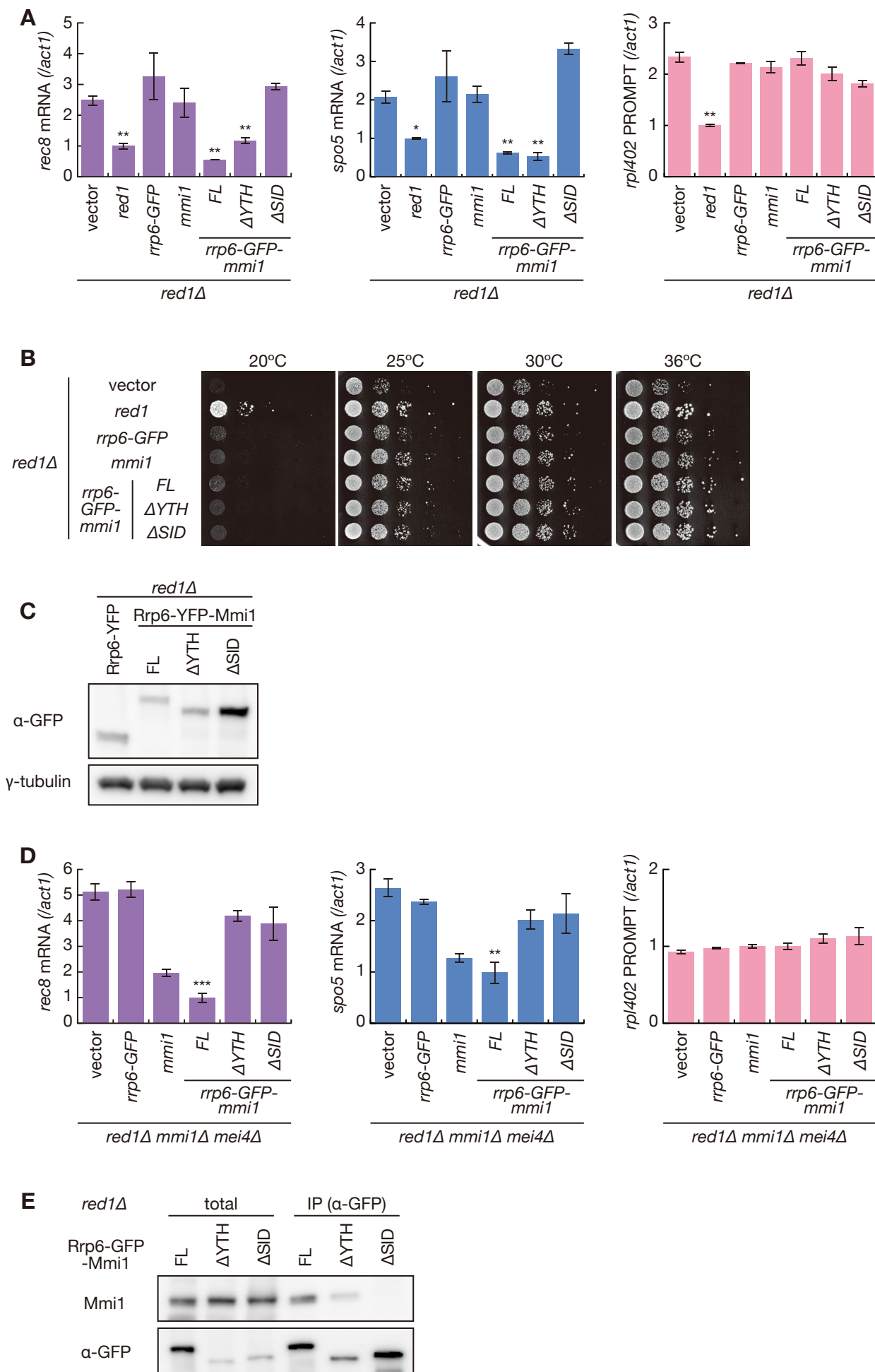


**S6 Fig.**



**S6 Fig. Interaction between Rrp6 and Mmi1 is essential for meiotic transcript elimination.**

(A) Expression of *rec8* mRNA, *spo5* mRNA, and *rpl402* PROMPT in *red1Δ* cells expressing Red1, Rrp6-GFP, Mmi1 or chimeric proteins composed of Rrp6, GFP, and full-length or truncated Mmi1 from plasmids in liquid MM medium. Transcripts of each gene were analyzed by RT-qPCR and normalized to *act1*. Error bars represent standard error of three independent samples. \* $P < 0.05$ ; \*\* $P < 0.01$  compared with cells carrying empty vector (Student's *t*-test).

(B) Growth profiles of *red1Δ* cells expressing Red1, Rrp6-GFP, Mmi1, or chimeric proteins composed of Rrp6, GFP, and full-length or truncated Mmi1 from plasmids. Ten-fold serial dilutions of cells were spotted on MM medium and incubated at the indicated temperatures.

(C) Expression levels of chimeric Rrp6-YFP-Mmi1 proteins. Cell extracts were prepared from exponentially growing cells expressing Rrp6-YFP or chimeric proteins composed of Rrp6, YFP, and full-length or truncated Mmi1 from plasmids in liquid MM medium and immunoblotted with anti-GFP antibody.  $\gamma$ -tubulin was used as a loading control.

(D) Expression of *rec8* mRNA, *spo5* mRNA and *rpl402* PROMPT in *red1Δ mmi1Δ mei4Δ* cells expressing Red1, Rrp6-GFP, Mmi1, or chimeric proteins composed of Rrp6, GFP, and full-length or truncated Mmi1 from plasmids in liquid MM medium. Transcripts were analyzed by RT-qPCR and normalized to *act1*. Error bars represent standard error of three independent samples. \* $P < 0.05$ ; \*\* $P < 0.01$ ; \*\*\* $P < 0.001$  compared with cells carrying empty vector (Student's *t*-test).

(E) Co-immunoprecipitation of endogenous Mmi1 and chimeric Rrp6-GFP-Mmi1 proteins. Native cell extracts were prepared from exponentially growing cells expressing chimeric proteins composed of Rrp6, GFP, and full-length or truncated Mmi1 from plasmids in liquid MM medium and subjected to immunoprecipitation with anti-GFP antibody. Precipitates and 10% total cell extracts were then immunoblotted with anti-Mmi1 and anti-GFP antibodies.