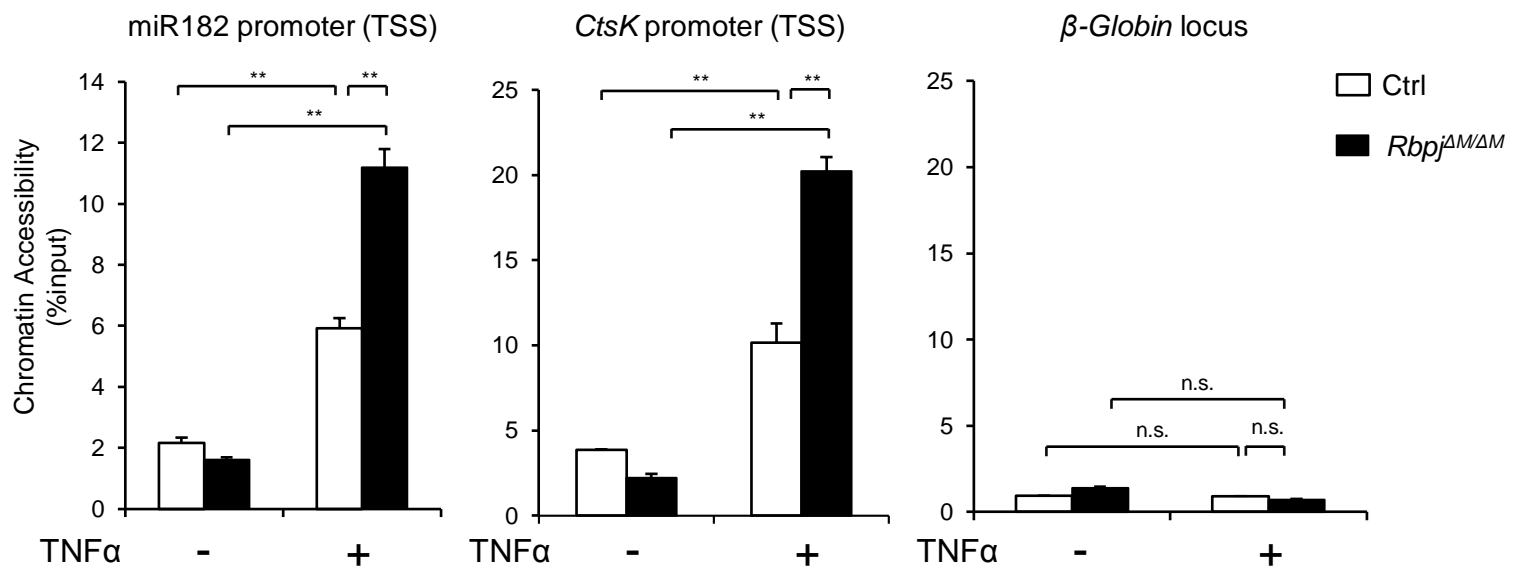
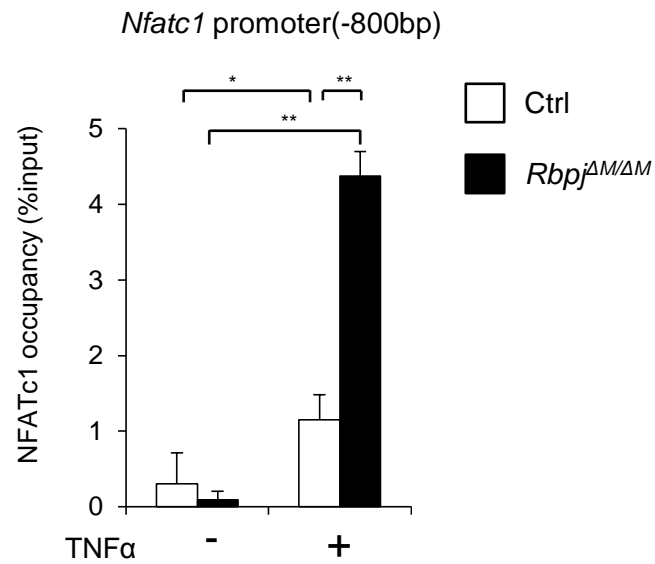


## Supplementary Fig. 1



**Supplementary Fig. 1.** FAIRE analysis of chromatin accessibility at the TSS region in the miR182 promoter, *CtsK* promoter (positive control) and *β-Globin* locus (negative control) in the Ctrl or *Rbpj*<sup>ΔM/ΔM</sup> BMMs stimulated or not with TNFα (40 ng/ml) for 48 h.

## Supplementary Fig. 2



**Supplementary Fig. 2.** ChIP analysis of NFATc1 occupancy at the indicated loci (800 bp upstream of TSS, as a positive control of ChIP NFATc1) in the NFATc1 promoter in the Ctrl or *Rbpj*<sup>ΔM/ΔM</sup> BMMs stimulated or not with TNFα (40 ng/ml) for 48 h.