

Cooperation therapy between anti-metastasis by small molecule inhibitors and anti-growth by photodynamic-AIEgens in ovarian cancer

Jun Dai ^{*1}, Min Xu ^{*2}, Quan Wang ², Juliang Yang ², Jinjin Zhang ¹, Pengfei Cui ¹,
Wenwen Wang ¹, Xiaoding Lou ^{✉2}, Fan Xia ^{✉2}, Shixuan Wang ^{✉1}

¹ Department of Obstetrics and Gynecology, Tongji Hospital, Tongji Medical College, Huazhong University of Science and Technology, Wuhan 430030, China.

² Engineering Research Center of Nano-Geomaterials of the Ministry of Education, Faculty of Materials Science and Chemistry, China University of Geosciences, Wuhan 430074, China.

* These authors contributed equally to this work.

✉ Corresponding author: louxiaoding@cug.edu.cn (Xiaoding Lou);
xiafan@cug.edu.cn (Fan Xia); shixuanwang@tjh.tjmu.edu.cn (Shixuan Wang)

2. Supporting Figures

Figure S1

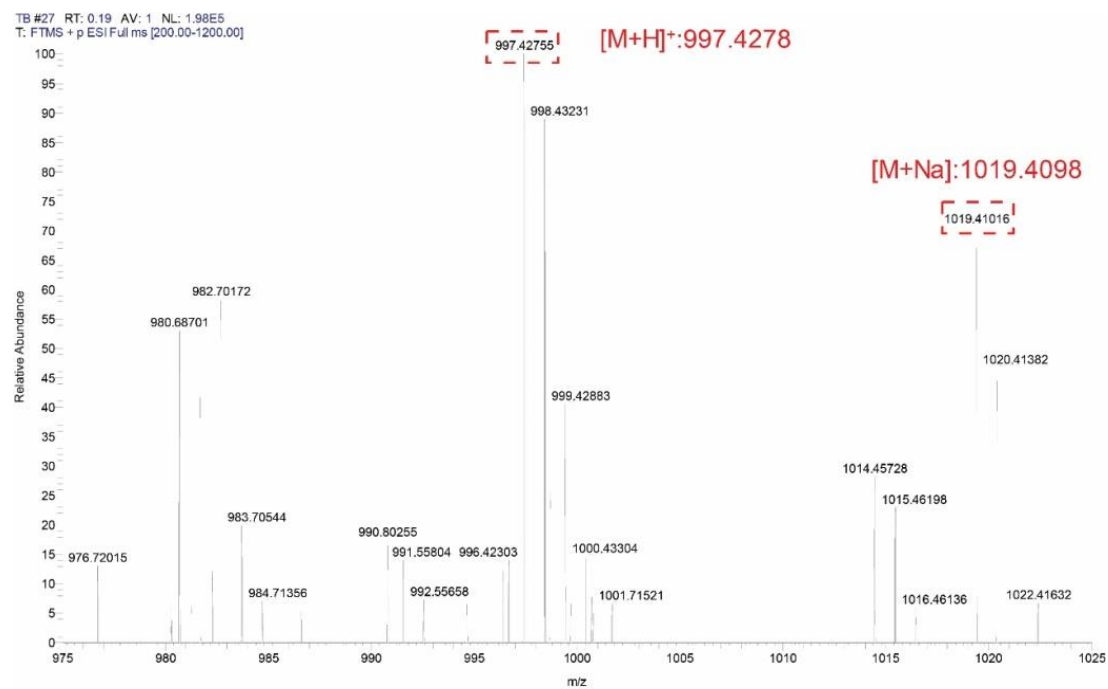


Figure S1. High resolution mass spectrum (HRMS) (MALDI-TOF) of TB, $[M+H]^+$ 997.42775 (calcd 997.4278); $[M+Na]$ 1019.41016 (calcd 1019.4098).

Figure S2

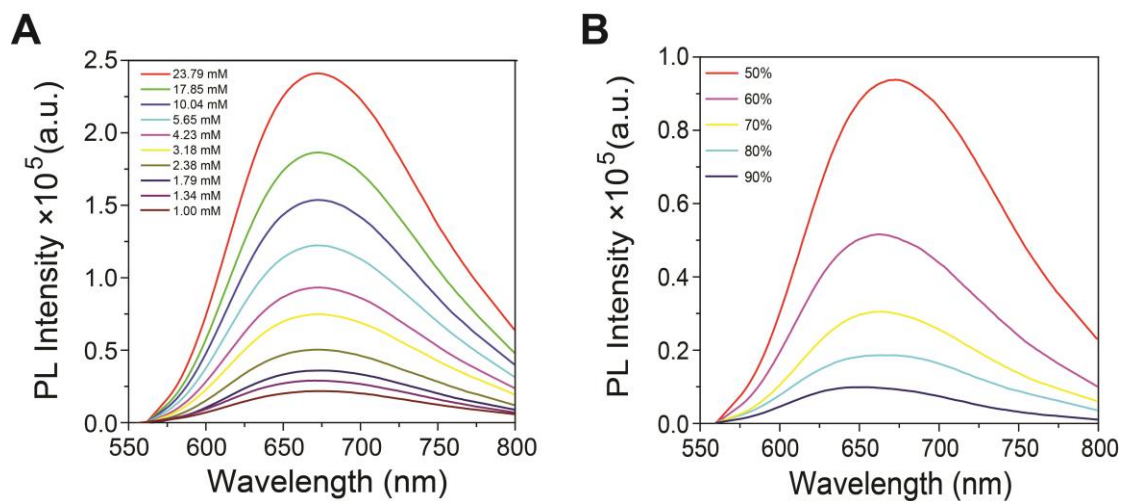


Figure S2. (A) The PL intensity of TB with different concentrations. (B) The PL intensity of TB (1 mM) in the THF/water mixtures.

Figure S3

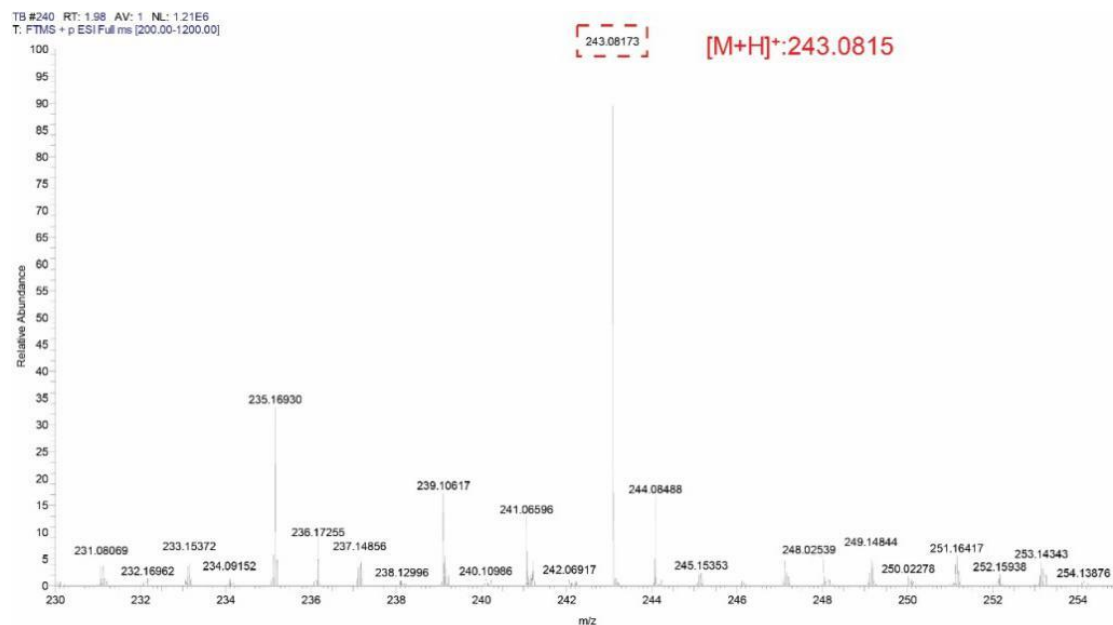


Figure S3. The HRMS (MALDI-TOF) of KBU2046, $[M+H]^+$ 243.08173 (calcd 243.0815).

Figure S4

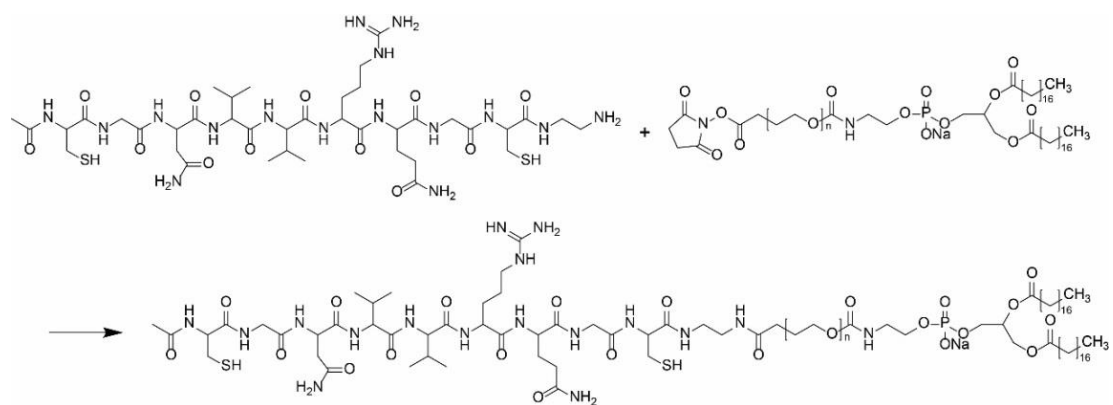


Figure S4. Synthesis of TMTP1-PEG-DSPE.

Figure S5

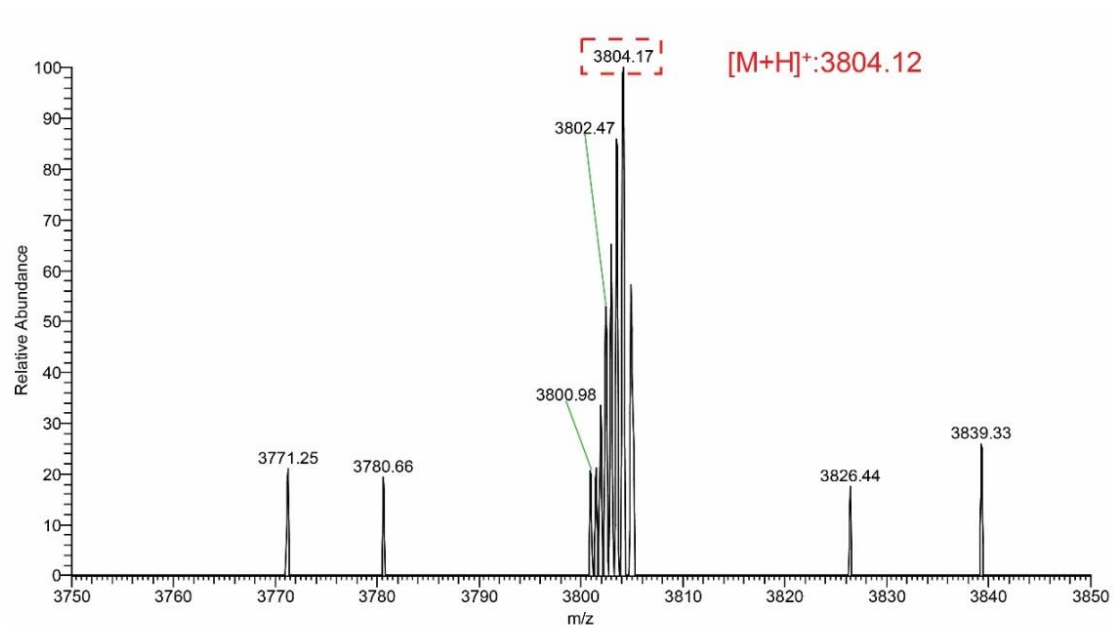


Figure S5. The HRMS (MALDI-TOF) of TMTTP1-PEG-DSPE, [M+H]⁺ 3804.17 (calcd 3804.12).

Figure S6

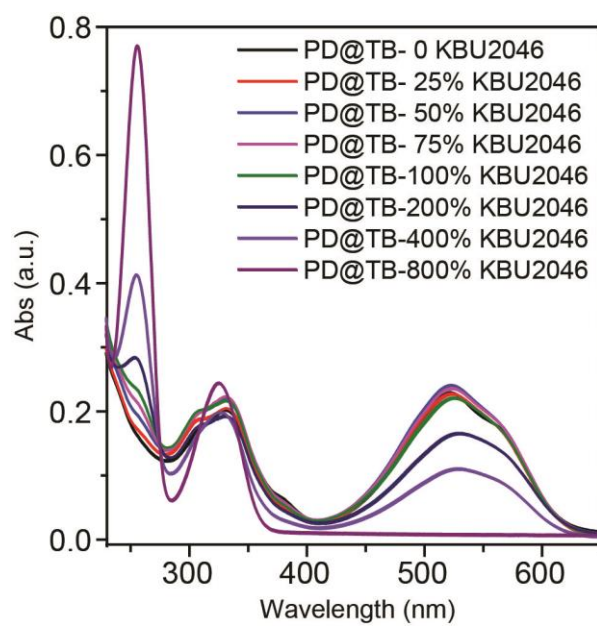


Figure S6. The drug loading capacity investigation of TPD@TB/KBU2046 nanoparticles.

Figure S7

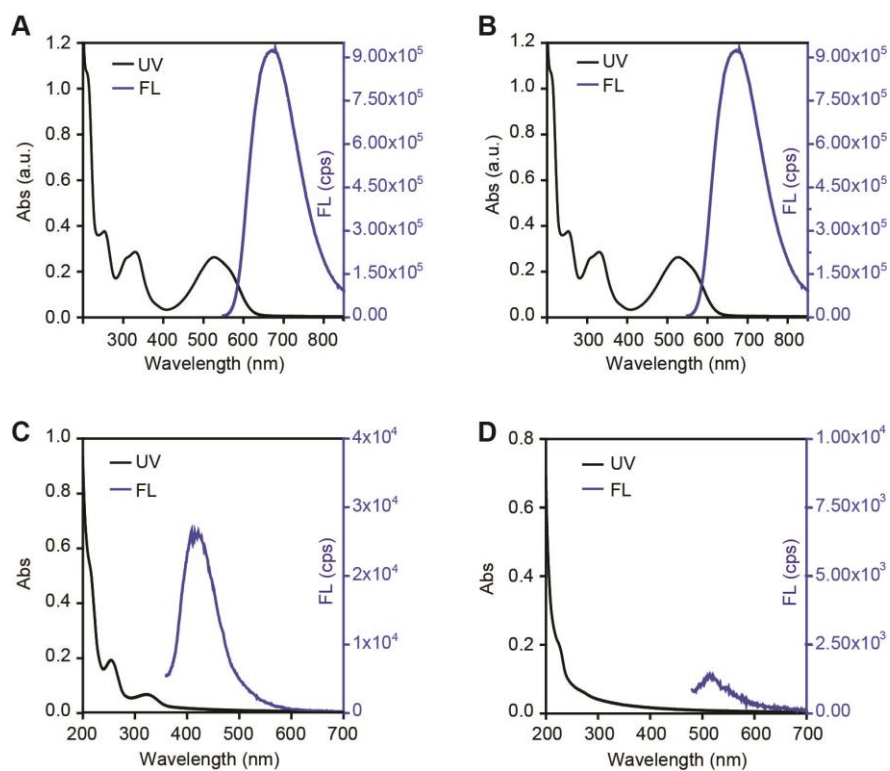


Figure S7. The UV-vis absorption and emission ($E_x = 530$ nm) spectrum of (A) PD@TB/KBU2046, (B) TPD@TB, (C) TPD@KBU2046 and (D) TPD nanoparticles.

Figure S8

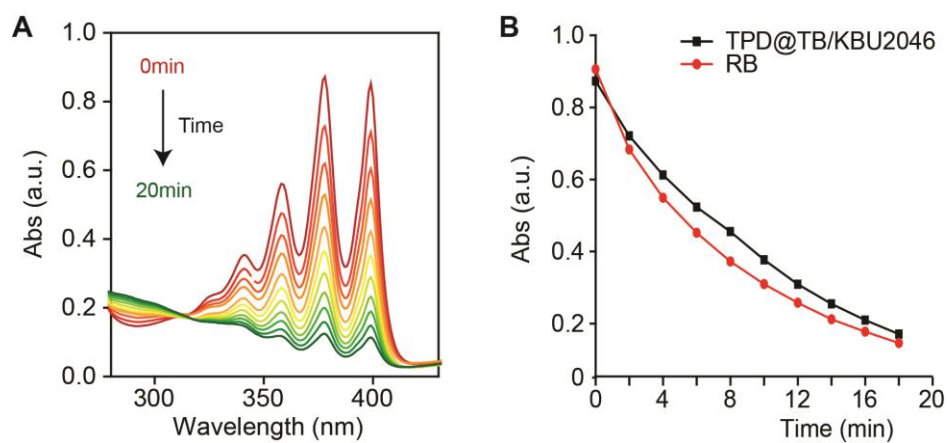


Figure S8. (A) The UV-vis absorption spectrum of the ROS indicator ABDA mixed with RB upon light irradiation (white light, 100 mW cm^{-2}). (B) The photosensitive activity of TPD@TB/KBU2046 nanoparticles and RB.