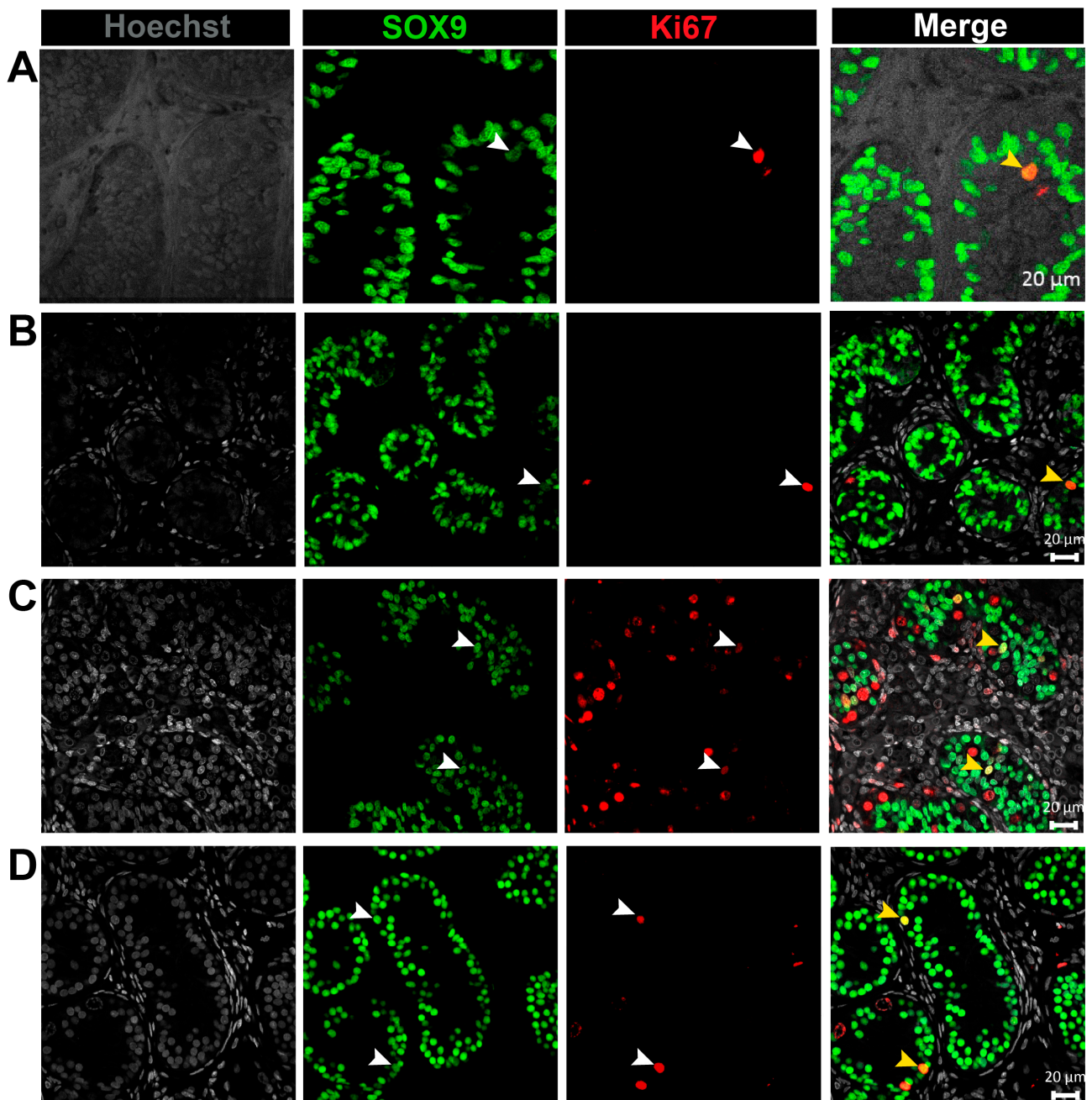
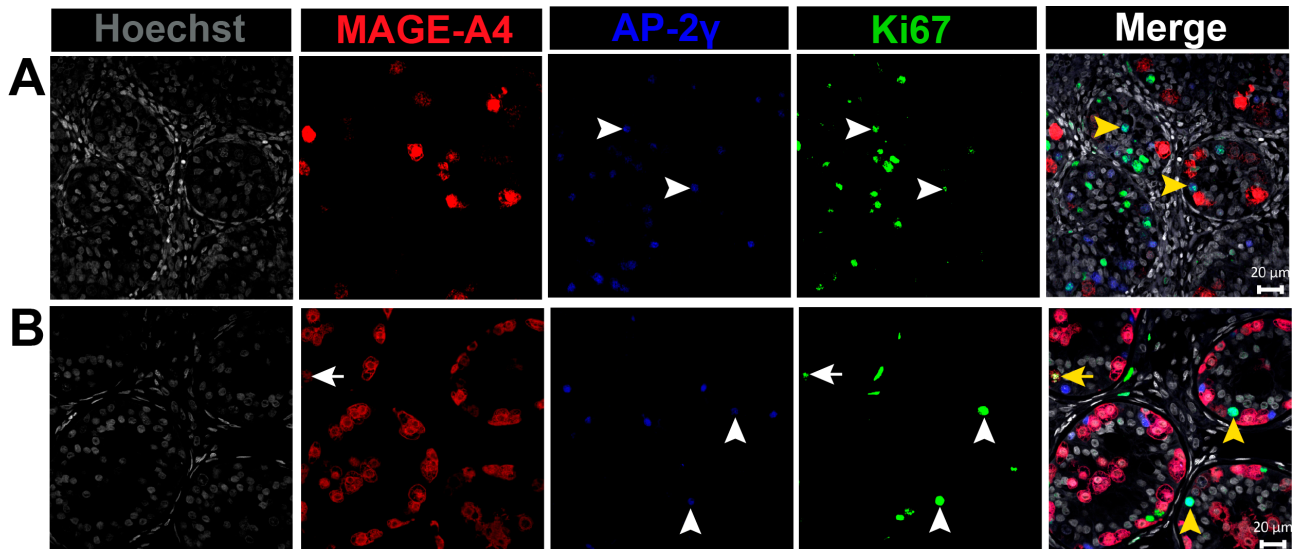


## Supplementary Material



**Figure S1.** Co-localisation of SOX9 and Ki67 expression in immature testis tissue. **(A)** Ungrafted testis tissue from 1-year-old patient. **(B)** Ungrafted testis tissue from 2-year-old patient. **(C)** Pre-graft control. **(D)** Graft recovered from mice exposed to hCG for 7 months followed by 5 months withdrawal hCG. Yellow arrowheads indicate SOX9<sup>+</sup>/Ki67<sup>+</sup> cells (proliferating Sertoli cells). White arrows indicate corresponding cells in single channel images. Scale bar: 20 µm.



**Figure S2.** Co-localisation of MAGE-A4, AP2 $\gamma$  and Ki67 expression in immature testis tissue. **(A)** Pre-graft control. **(B)** Long-term xenograft exposed continuously to hCG. Yellow arrowheads denote AP2 $\gamma$ <sup>+</sup>/Ki67<sup>+</sup> cells (proliferating gonocytes). Yellow arrow indicates MAGE-A4<sup>+</sup>/Ki67<sup>+</sup> cells (proliferating spermatogonia). White arrows and arrowheads indicate corresponding cells in single channel images. Scale bar: 20  $\mu$ m