

The Effects of Hyperuricemia on the Prognosis of IgA Nephropathy are More Potent in Females

Tae Ryom Oh ¹, Hong Sang Choi ¹, Chang Seong Kim ¹, Kyung Pyo Kang ², Young Joo Kwon ³, Sung Gyun Kim ⁴, Seong Kwon Ma ¹, Soo Wan Kim ^{1,*†} and Eun Hui Bae ^{1,*†}

¹ Department of Internal Medicine, Chonnam National University Medical School, 42 Jebongro, Gwangju 61469, Korea; tryeomoh@daum.net (T.R.O.); hongsang38@hanmail.net (H.S.C.); laminion@hanmail.net (C.S.K.); drmsk@hanmail.net (S.K.M.)

² Department of Internal Medicine and Research Institute of Clinical Medicine of Chonbuk National University-Chonbuk National University Hospital, Chonbuk National University Medical School, Jeonju 54907, Korea; kpkang@jbnu.ac.kr

³ Department of Internal Medicine, Korea University College of Medicine, Seoul 02841, Korea; yjkwon@korea.ac.kr

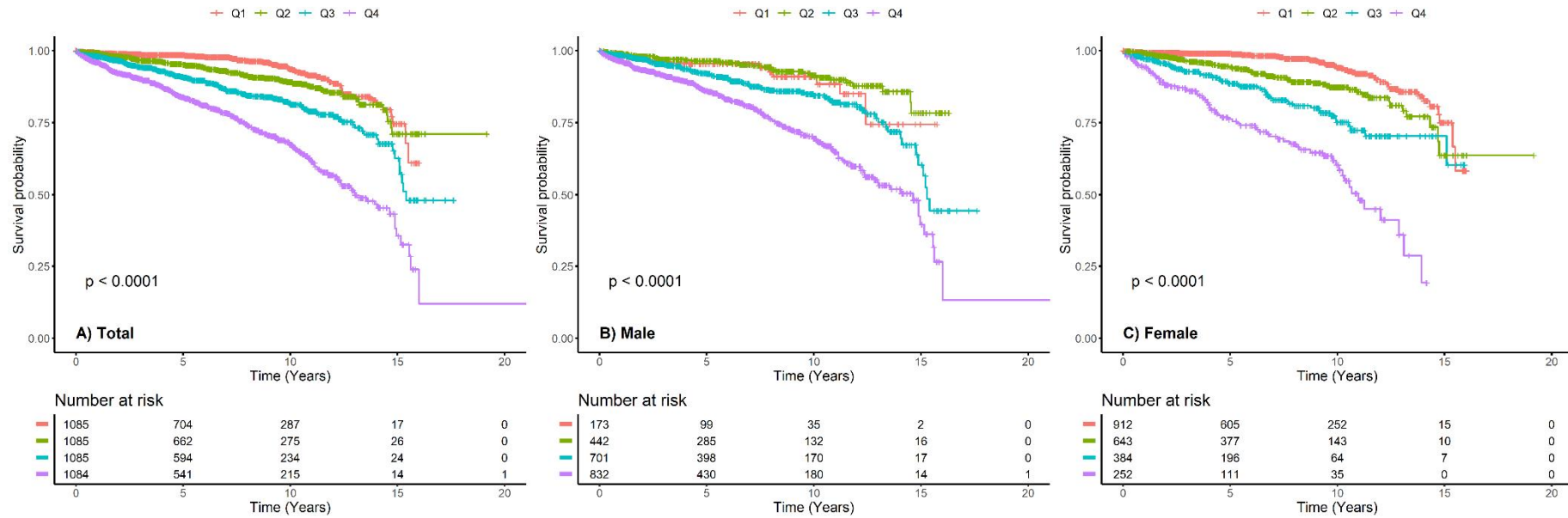
⁴ Department of Internal Medicine, Hallym University Sacred Heart Hospital, Anyang 14068, Korea; sgkim@hallym.ac.kr

* Correspondence: skimw@chonnam.ac.kr (S.W.K.); Tel.: +82-62-220-6271; baedak76@gmail.com (E.H.B.); Tel.: +82-62-220-6503, Fax: +82-62-225-8578

† These authors have contributed equally to this manuscript as correspondence authors.

Supplementary Materials

Figure S1. Kaplan-Meier survival curve with log-rank test for composite renal outcome by quartiles of uric acid



Quartiles 4 showed the highest event incidence in all groups.