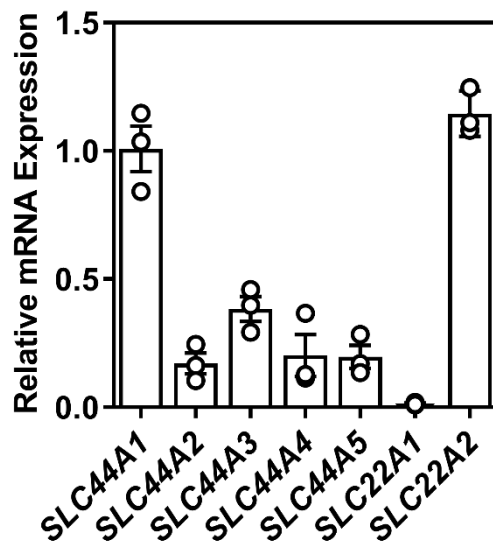


Supplementary Table S1. qPCR primer sequences.

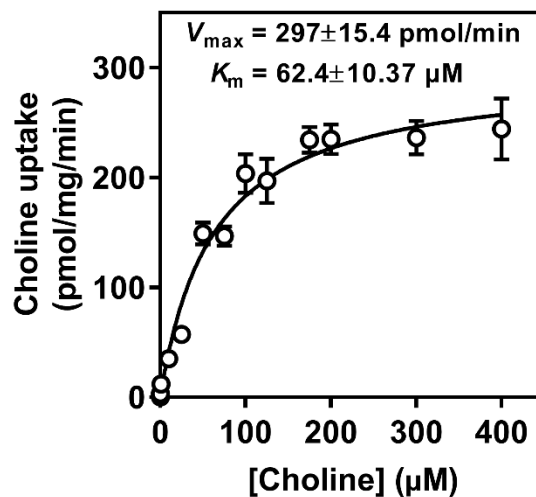
<i>Gene</i>	<i>Forward Primer</i>	<i>Reverse Primer</i>
<i>SLC44A1</i>	TTTCCTGCTATGCCAAGTTTGC	CCAGAATGGTTAAGATCCACACA
<i>SLC44A2</i>	AAAGGGAGGGAGAGTTTTGC	CCCTTGGGTGGGTTTAGTTT
<i>SLC44A3</i>	GTCCAAAAGCAGACTCACTGT	GCAAATAGGGAGTAGCACTCAGG
<i>SLC44A4</i>	GGGATCAGCGGTCTTATTGA	GCGCAGAAGCAAGATAAAC
<i>SLC44A5</i>	ACCCAGAAAGAGCAGCCTAT	TTTAGCAACACGGAGGGACT
<i>SLC22A1</i>	TAATGGACCACATCGCTCAA	ACCCCTGATAGAGCACAGA
<i>SLC22A2</i>	AAGAATGGGGAATCACAATGG	AGATGTGGACGCCAAGATTC
<i>SLC5A7</i>	TTGGTGGCCGAGATATTGGTT	GCCATTGATATACCCTCCTCCG
<i>PCYT1A</i>	CTCTGATGCAAGCGAAGAACC	ATCACCGTGAAGCCTTTGAAG
<i>CHKA</i>	CTTGGTGATGAGCCTCGGAA	AAGTGACCTCTCTGCGAGAA
<i>CHKB</i>	AGTCTCGGTTCCAGTTCTAC	CTTCTGCTCGTTGTTCCTCC
β <i>ACTIN</i>	CCAACCGCGAGAAGATGACC	GGAGTCCATCACGATGCCAG
<i>HSP90</i>	CCAGTTTGGTGTCGGTTTCTAT	CTGGGTATCGTTGTTGTGTTTTG
<i>JFH1 Hepatitis C Virus</i>	GTCTGCGGAACCGGTGAGTA	GCCCAAATGGCCGGGATA

Supplementary Figure S1. FBS-cultured Huh7.5 choline transporter transcript expression



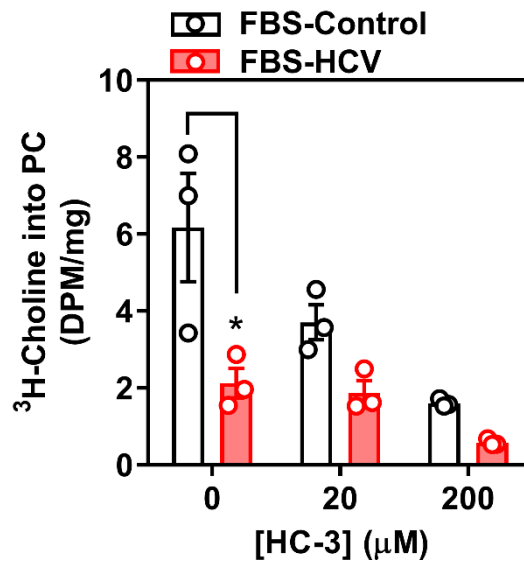
Supplementary Figure S1. FBS-cultured Huh7.5 choline transporter transcript expression. RNA was isolated from FBS-cultured Huh7.5 cells to measure choline transporter (*SLC44A1-5*; choline transporter-like 1-5, and *SLC22A1* and 2; organic cation transporter 1 and 2) transcript expression. All groups are shown relative to the expression of *SLC44A1* and normalized to the average of β *ACTIN* and *HSP90*.

Supplementary Figure S2. HS-cultured Huh7.5 choline uptake kinetics



Supplementary Figure S2. HS-cultured Huh7.5 choline uptake kinetics. Choline uptake saturation kinetics from HS-cultured Huh7.5 cells, fit to a Michaelis-Menten curve. Data are mean \pm SEM and are representative of 3 independent experiments.

Supplementary Figure S3. Inhibition of choline transport in FBS-cultured infected cells



Supplementary Figure S3. Inhibition of choline transport in FBS-cultured infected cells. FBS-cultured Huh7.5 cells were infected at an MOI of 1 for 24 h in the presence or absence of 20 or 200 µM hemicholinium-3 (HC-3) to inhibit choline uptake. [³H]-choline incorporation into PC was measured. Data are mean ± SEM and are representative of 3 independent experiments. Statistical significance was determined by two-way ANOVA with a Tukey *post-hoc* analysis, such that * represents *p* < 0.05 compared to uninfected vehicle control within inhibitor condition.

Supplementary Figure S4. Graphical abstract

