

Supplementary Table. Comparison of baseline characteristics between DM and non-DM.

| Variables | DM (n=2,125) | Non-DM (n=3,416) | p |
|---|-----------------|------------------|--------|
| Age (years) | 70.4±11.4 | 67.4±15.9 | <0.001 |
| Male sex (n, %) | 1157 (54.4) | 1785 (52.3) | 0.112 |
| Body mass index (kg/m ²) | 23.9±3.9 | 23.0±3.9 | <0.001 |
| Hypertension | 1571 (73.9) | 1709 (50.0) | <0.001 |
| Diabetes mellitus history | 1961 (92.3) | 0 (0.0) | <0.001 |
| Dyslipidemia | 1088 (55.5) | 1081 (35.4) | <0.001 |
| Heart failure history | 986 (46.4) | 1422 (41.6) | 0.001 |
| Smoking history | 854 (40.2) | 1286 (37.6) | 0.059 |
| Alcohol history | 780 (36.7) | 1342 (39.3) | 0.055 |
| Obesity | 133 (6.3) | 145 (4.3) | 0.001 |
| Ischemic heart disease | 839 (39.5) | 722 (21.1) | <0.001 |
| Cerebrovascular disease | 392 (18.4) | 448 (13.1) | <0.001 |
| Chronic kidney disease | 471 (22.2) | 323 (9.5) | <0.001 |
| Chronic obstructive lung disease | 234 (11.0) | 390 (11.4) | 0.647 |
| Atrial fibrillation | 537 (25.3) | 995 (29.1) | 0.002 |
| Malignancy | 154 (7.2) | 300 (8.8) | 0.043 |
| Systolic blood pressure (mmHg) | 134.3±30.8 | 129.2±29.8 | <0.001 |
| Diastolic blood pressure (mmHg) | 78.8±18.5 | 78.5±18.9 | 0.572 |
| Heart rate (bpm) | 93.3±25.3 | 92.3±26.3 | 0.159 |
| Hb A1c (%) | 7.3±1.4 | 5.8±0.4 | <0.001 |
| N-terminal Pro-B type natriuretic peptide (pg/ml) | 10213.3±10970.8 | 8672.5±10681.0 | <0.001 |
| Brain natriuretic peptide (pg/ml) | 1392.8±1378.2 | 1305.0±1256.2 | 0.124 |
| High-sensitivity C-reactive protein (mg/dL) | 2.6±4.6 | 2.1±3.9 | 0.002 |
| Troponin-I (ng/mL) | 3.0±15.7 | 2.8±22.3 | 0.722 |

Values are mean±SD or n (%). DM, diabetes mellitus.

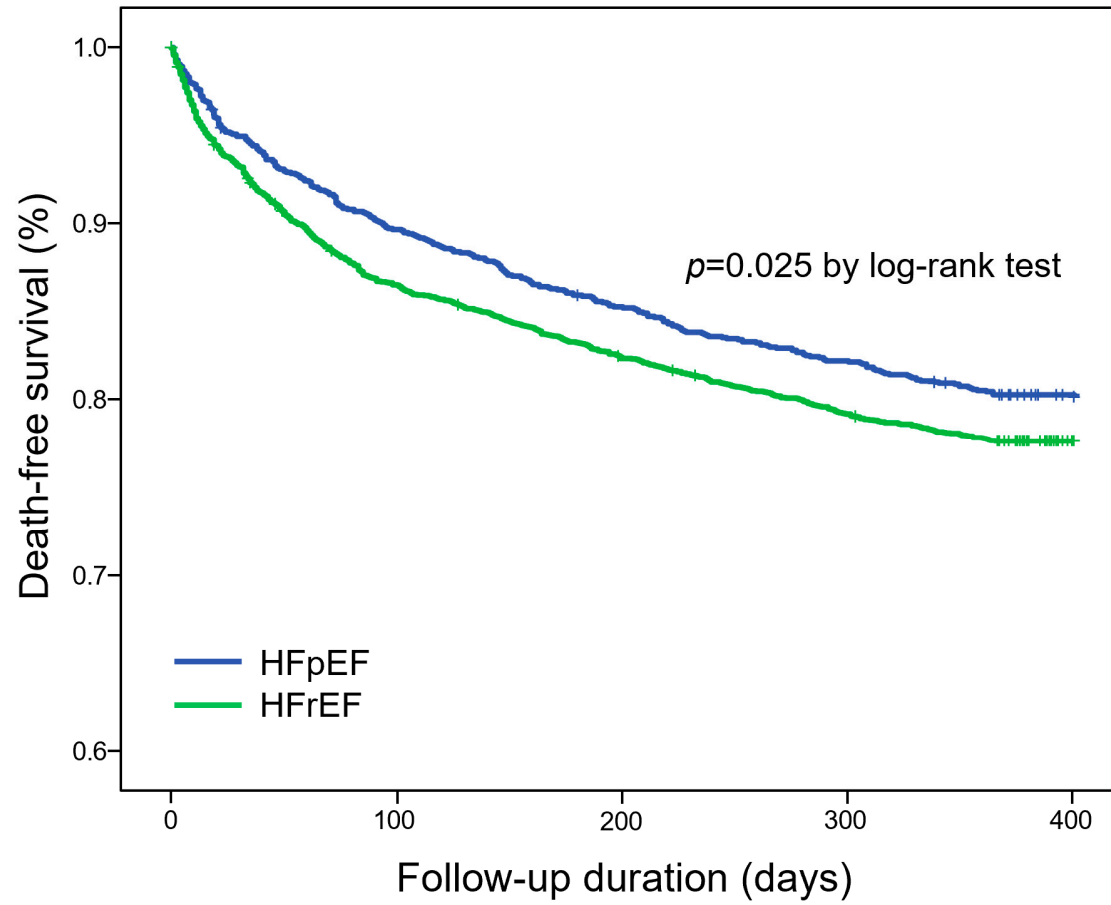


Figure S1