

## **Bayesian Spatiotemporal Modeling of Routinely Collected Data to Assess the Effect of Health Programs in Malaria Incidence During Pregnancy in Burkina Faso**

**Toussaint Rouamba<sup>1,2</sup>, Sekou Samadoulougou<sup>3,4</sup>, Halidou Tinto<sup>1</sup>, Victor A. Alegana<sup>5,6</sup>, and Fati Kirakoya-Samadoulougou<sup>2</sup>**

1 Clinical Research Unit of Nanoro, Institute for Research in Health Sciences, National Center for Scientific and Technological Research, 528, Avenue Kumda-Yoore, BP 218 Ouagadougou CMS 11, Ouagadougou, Burkina Faso

2 Center for research in epidemiology, Biostatistics and Clinical Research, School of Public Health, University libre de Bruxelles (ULB), Route de Lennik, 808 B-1070 Bruxelles. Brussels, Belgium

3 Centre for Research on Planning and Development (CRAD), Laval University, Quebec, G1V 0A6, Canada

4 Evaluation Platform on Obesity Prevention, Quebec Heart and Lung Institute, Quebec, G1V 4G5, Canada.

5. Kenya Medical Research Institute - Wellcome Trust Research Programme, P.O. Box 43640-00100, Nairobi, Kenya

6. Geography and Environmental Science, University of Southampton, SO17 1BJ Southampton, UK

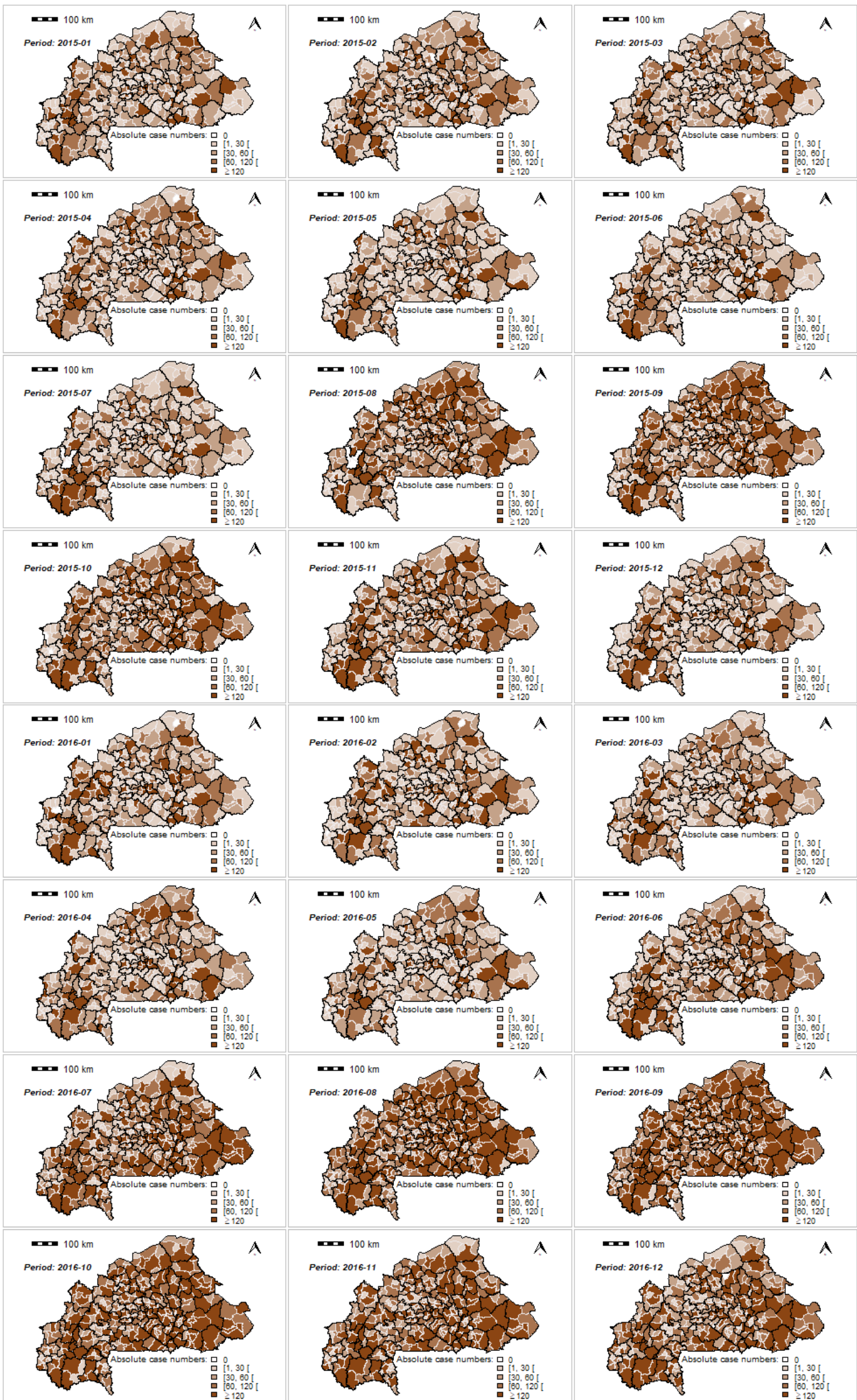
\*Correspondence to [rouambatoussaint@gmail.com](mailto:rouambatoussaint@gmail.com)

### **Supplementary Information 5**

**Figure S3.** Geographic distribution of observed absolute case numbers of malaria in pregnant in Burkina Faso from 2015 to 2017.

Source: The shapefile was obtained from the "Base Nationale de Découpage du territoire" of Burkina Faso (BNDT, 2006). The malaria in pregnancy data were obtained from the National Malaria Control Program of Burkina Faso, downloaded from the District Health Information System 2.

Maps created by Toussaint Rouamba et al, 2019

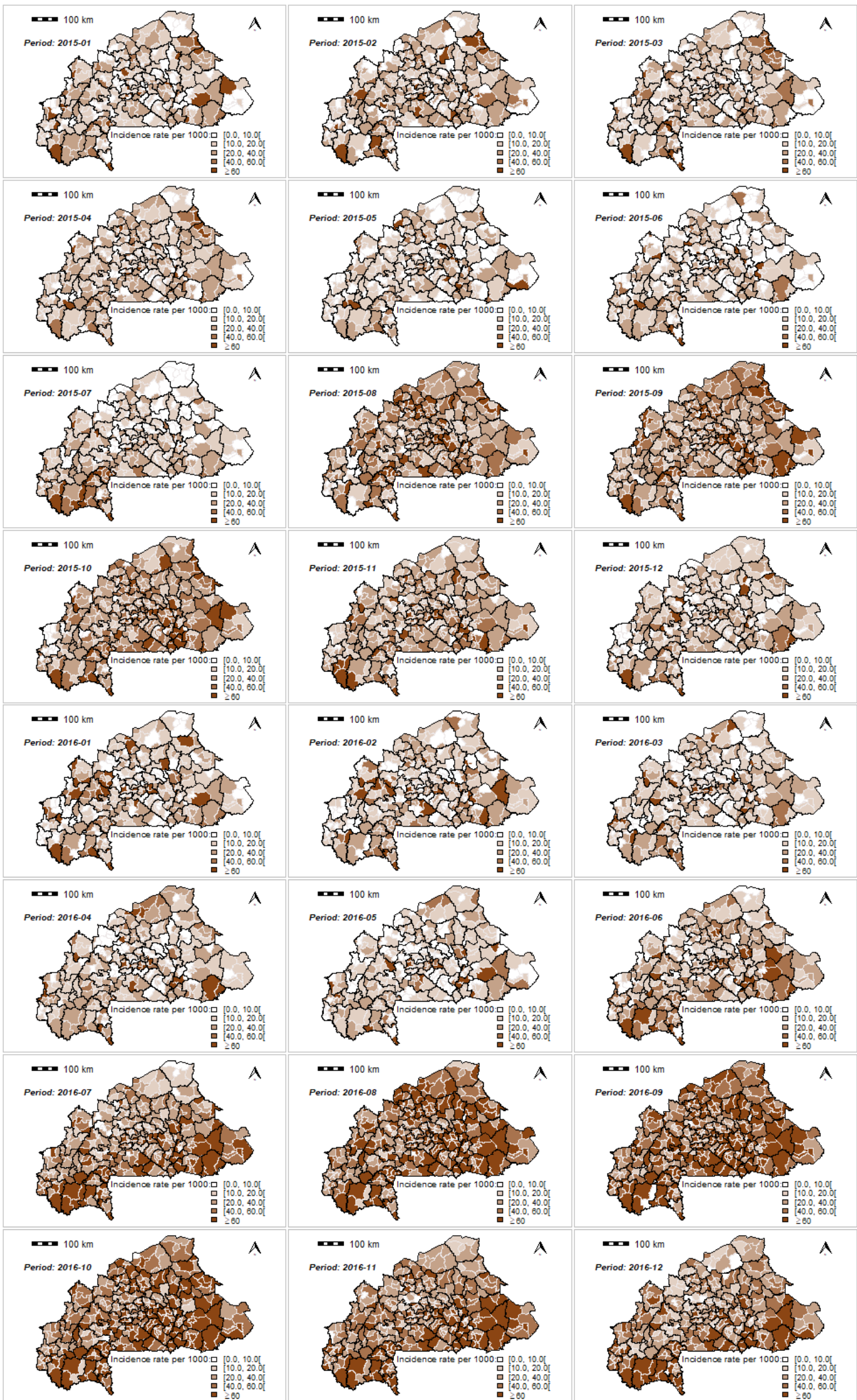


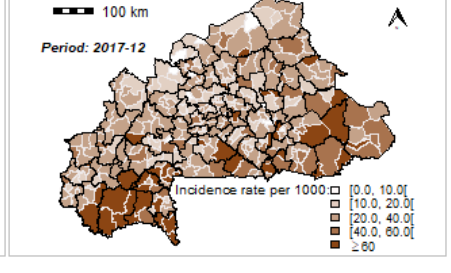
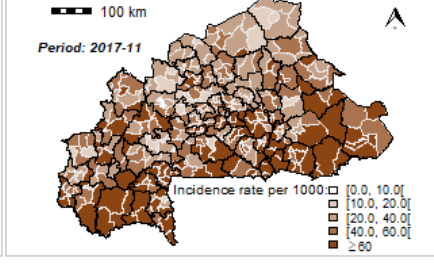
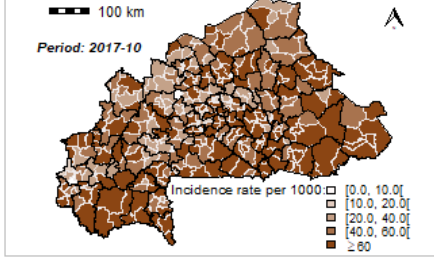
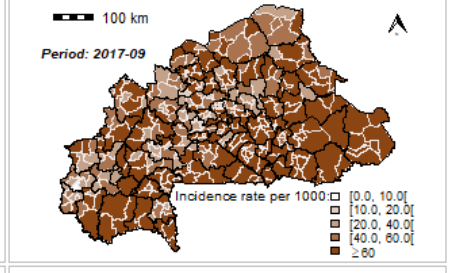
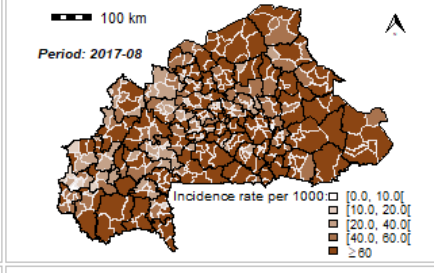
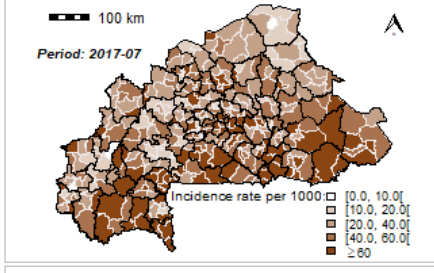
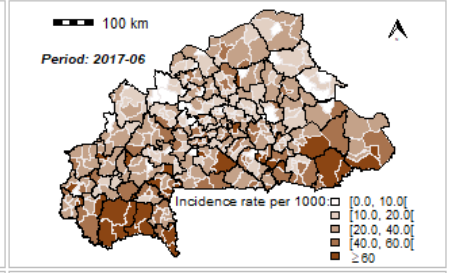
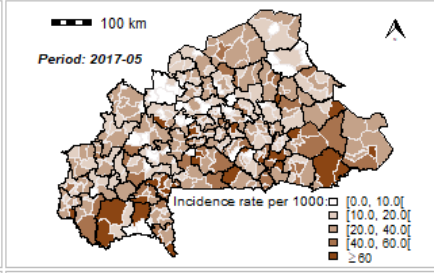
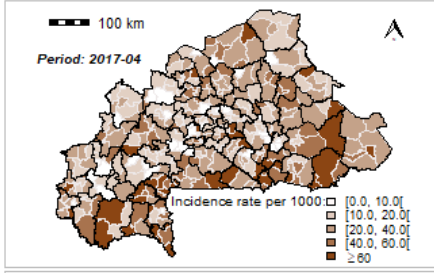
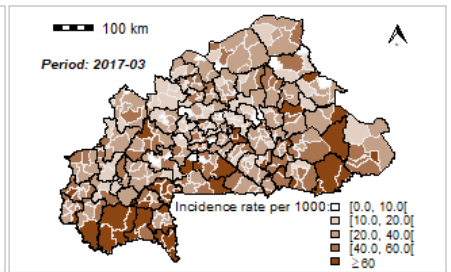
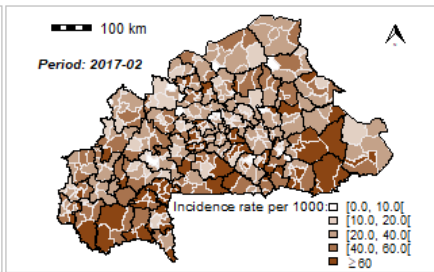
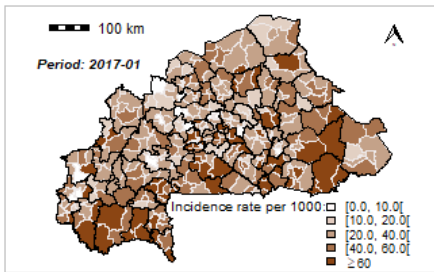


**Figure S4.** Geographic distribution of monthly crude incidence rate per 1000 pregnant women at risk of malaria in Burkina Faso from 2015 to 2017

Source: The shapefile was obtained from the "Base Nationale de Découpage du territoire" of Burkina Faso (BNDT, 2006). The malaria in pregnancy data were obtained from the National Malaria Control Program of Burkina Faso, downloaded from the District Health Information System 2.

Maps created by Toussaint Rouamba et al, 2019





**Figure S5.** Geographic distribution of monthly Malaria in pregnancy standardized morbidity ratio in Burkina Faso from 2015 to 2017 as the ratio of observed cases and expected cases.

Source: The shapefile was obtained from the "Base Nationale de Découpage du territoire" of Burkina Faso (BNDT, 2006). The malaria in pregnancy data were obtained from the National Malaria Control Program of Burkina Faso, downloaded from the District Health Information System 2.

Maps created by Toussaint Rouamba et al, 2019

