

Supplementary Information

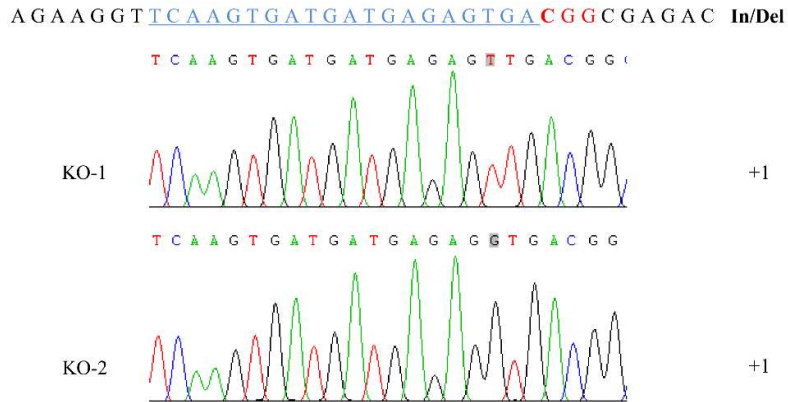


Fig. S1. Sequence confirmation of the *FLN2* mutations induced by Cas9/sgRNA. The 20 nt Cas9/sgRNA target sequence is shown underlined in blue, the PAM site is marked in red, and the inserted nucleotides in gray. The net length of the indel is shown on the right.

Table S1. The sequence of primers used for qRT-PCR assays.

Gene	Primer ID	Primer sequences
<i>UBQ5</i>	F(5'-3')	CTCGCCGACTACAACATCCA
	R(5'-3')	TCTTGGGCTTGGTGTACGTCTT
<i>OsFLN2</i>	F(5'-3')	CCGAATGGCTTCTCTTCTTCTC
	R(5'-3')	GGCTCCTGATTGAGTTGGTACTACA
<i>UGP1</i>	F(5'-3')	ATGTCGTCGGAGGCGCGGG
	R(5'-3')	CGGCGGCGGAGGAGGAGCG
<i>SPS2</i>	F(5'-3')	ATGTGGTTGAACTTGCTAAA
	R(5'-3')	GATATGGCCAAGTGCACC
<i>SPS6</i>	F(5'-3')	TCTTCAGCGGCCTCCTCCGC
	R(5'-3')	GCGCCGACTCCGACGAC
<i>PFPα</i>	F(5'-3')	GTGGAAGTGATGGTCTTCTC
	R(5'-3')	CAATGATTACTAAAGCATCC
<i>cyFBP1</i>	F(5'-3')	ATGGATCACGAGGCGGACG
	R(5'-3')	TTGTTGACGGCGGAGGCGAC
<i>PPase</i>	F(5'-3')	GAGCGAGGCGGACGGAGGCG
	R(5'-3')	GTGTCGAGGTCGTGCCAGG
<i>OsSUT3</i>	F(5'-3')	CCGTCGACATGGAGCTCGA
	R(5'-3')	AACGTACGGGGTGAGGAGA
<i>OsSUT4</i>	F(5'-3')	CGCCGGCGGTGGCGGCCTCA
	R(5'-3')	CGTGAGGAGCGAGAGCTGA
<i>OsSWEET11</i>	F(5'-3')	GACGTTCTTGCAGGTGTACA
	R(5'-3')	TAGCGGACGATGTAGGCGGC
<i>OsSWEET14</i>	F(5'-3')	TTCCCAACGTGCTGGGCTTCT
	R(5'-3')	GCACCTCGCGGGTCTTGACG
<i>OsMT</i>	F(5'-3')	GCTGCCAGGCAGGAAGCT
	R(5'-3')	GGTTCCAGTTTCACCACGACA
<i>OsTPT2</i>	F(5'-3')	TAGTTGGGTAGCTGCTTTGATCGA
	R(5'-3')	AAATGGGATGATGGAGGCTTTG