

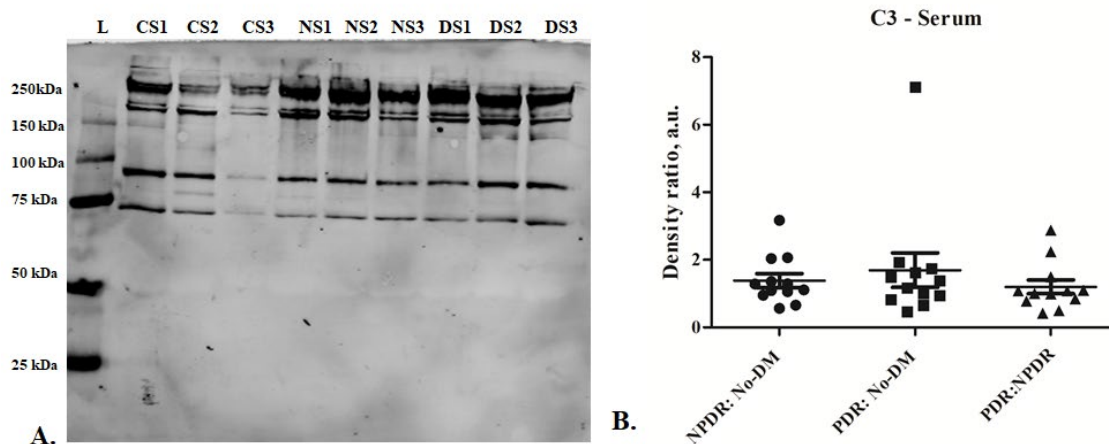
## Supplementary Materials

**Supplementary Table S1:** Details of antibodies used for western blotting and their dilutions.

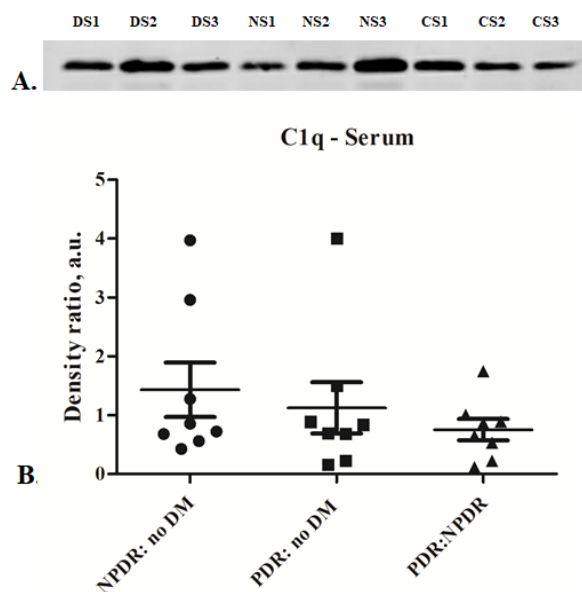
Antibody list	Conc. of protein used	Dilution	% of gel and condition used
Ms C3, Santacruz-sc-28294	15 µg	1:300	7.5% SDS PAGE, non-reducing condition
Ms C1q, Abcam-ab71089	30µg	1:1000	12% SDS PGAE, reducing condition
Ms C4b, Santa Cruz, sc-74524	25µg	1:200	10%SDS PAGE, non-reducing condition
Rb CFB, Abcam, ab72658	25µg	1:500	10%SDS PAGE, non-reducing condition
Ms CFH, Santacruz, sc-166613	30 µg	1:200	7.5%SDS PAGE, reducing condition
Anti -Ms. 680RD, Licor-catalogue no. 926-68070	-	1:75,00	-
Anti -Rb 800CW, Licor, catalogue no.926-32211	--	1:10,000	--

**Supplementary Table S2:** Primer sequence and TaqMan assays used for qRT PCR

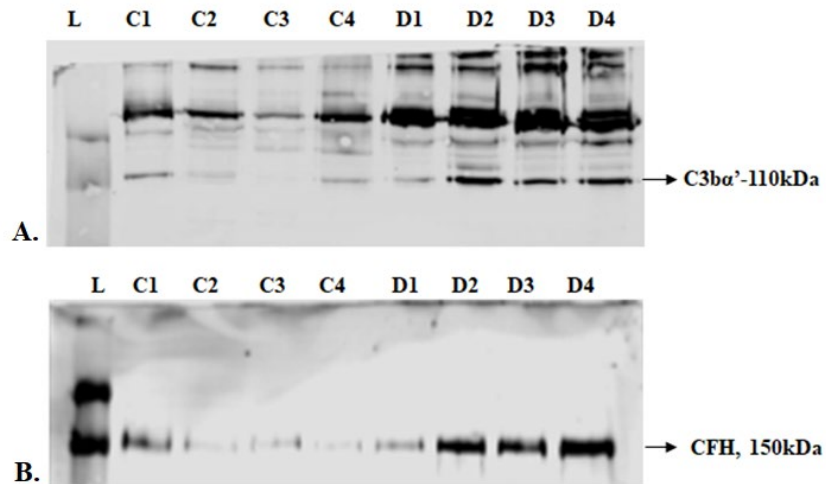
Gene	Forward primer	Reverse primer	Ref.
<i>CXCR4</i>	AGCATGACGGACAAGTACAGG	GATGAAGTCGGGAATAGTCAGC	(Vaday et al., 2004)
<i>Vegf 165</i>	ATCTTCAAGCCATCCTGTGTGC	CAAGGCCACAGGGATTTTC	(Medford et al., 2009)
<i>CFH</i>	TACTGGCTGGATACCTGCTC	CCTGACGGAGTCTCAAATG	(Zhang et al., 2015)
<i>β Actin</i>	TCTACAATGAGCTGCGTGTG	GGTGAGGATCTTCATGAGGT	(Horvatinovich et al., 1994)



**Supplementary Figure 1.** (A) Representative Western blot of C3 in serum of PDR, NPDR, and No-DM controls. (B) Quantification of C3 in PDR vs. no-DM (n=12) and no-DM control (n=12); data represented as mean  $\pm$  SEM. DS: PDR serum, NS: NPDR serum, CS: control serum, L: protein ladder, n.s.: not significant.



**Supplementary Figure 2.** (A) Representative Western blot of C1q in serum of PDR, NPDR, and No-DM controls. (B). Quantification of C1q in PDR (n=8) and no-DM control (n=8); data represented as mean  $\pm$  SEM. DS: PDR serum, NS: NPDR serum, CS: control serum, L: protein ladder, n.s.: not significant.



**Supplementary Figure 3.** Representative Western blot images of (A) C3 and (B) CFH in PDR and no-DM control vitreous. In the Western blots, three of four PDR vitreous samples (D2, D3, and D4) showed higher C3βα' and a concurrent increase in CFH levels.

Horvatinovich, J.M., Sparks, S.D., and Borowitz, M.J. (1994). Detection of terminal deoxynucleotidyl transferase by flow cytometry: a three color method. *Cytometry* 18(4), 228-230. doi: 10.1002/cyto.990180407.

Medford, A.R., Douglas, S.K., Godinho, S.I., Uppington, K.M., Armstrong, L., Gillespie, K.M., et al. (2009). Vascular Endothelial Growth Factor (VEGF) isoform expression and activity in human and murine lung injury. *Respir Res* 10, 27. doi: 10.1186/1465-9921-10-27.

Vaday, G.G., Hua, S.B., Peehl, D.M., Pauling, M.H., Lin, Y.H., Zhu, L., et al. (2004). CXCR4 and CXCL12 (SDF-1) in prostate cancer: inhibitory effects of human single chain Fv antibodies. *Clin Cancer Res* 10(16), 5630-5639. doi: 10.1158/1078-0432.CCR-03-0633.

Zhang, Y., Huang, Q., Tang, M., Zhang, J., and Fan, W. (2015). Complement Factor H Expressed by Retinal Pigment Epithelium Cells Can Suppress Neovascularization of Human Umbilical Vein Endothelial Cells: An in vitro Study. *PLoS One* 10(6), e0129945. doi: 10.1371/journal.pone.0129945.