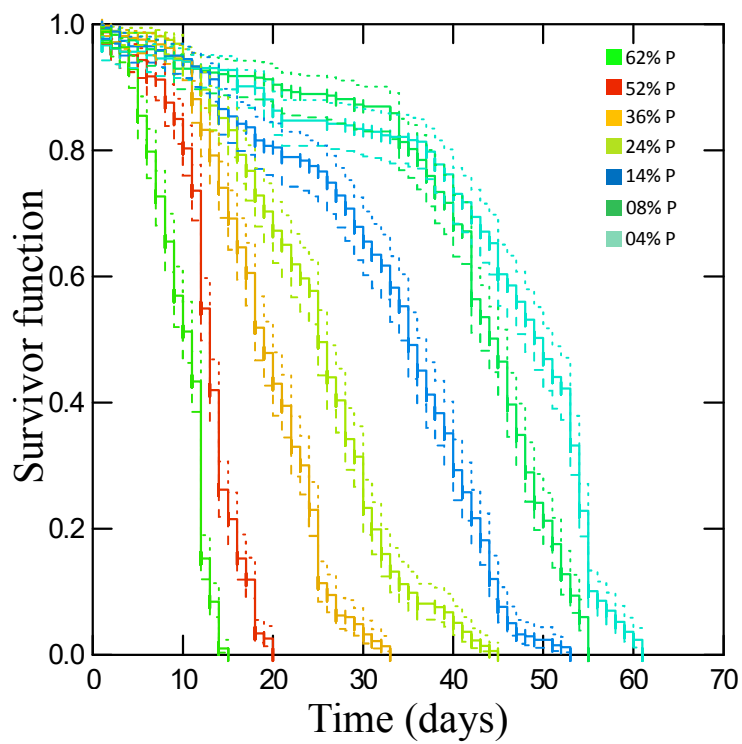
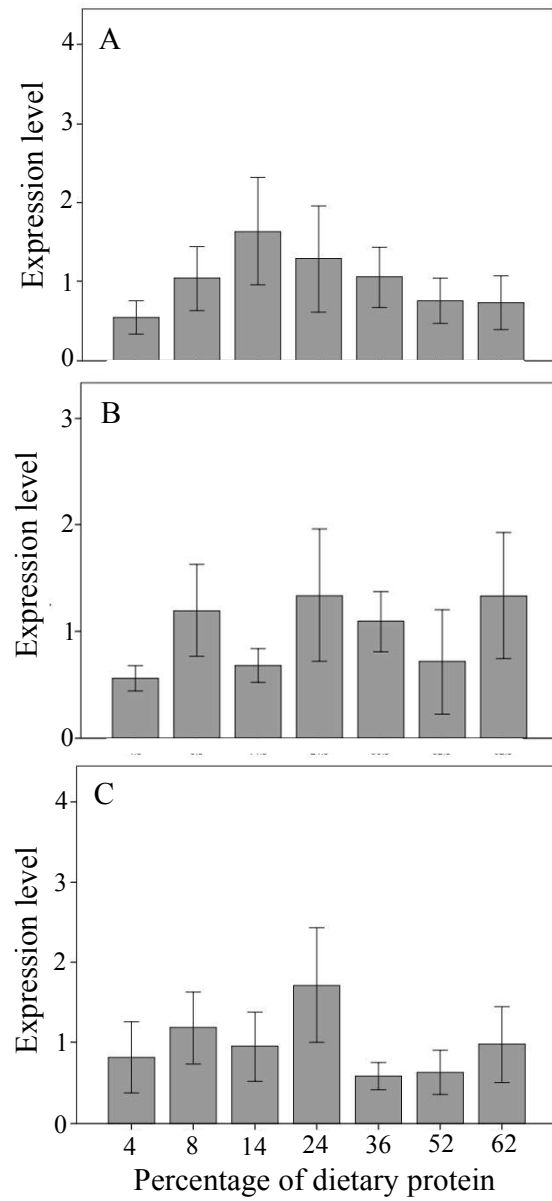


Supplementary Figure 1. Life expectancy Kaplan–Meier curves with 95% confidence for flies fed seven diets varying in the percentage of protein (P) (Log Rank test, $\chi^2=3166.5$, $df=6$, $p\leq 0.001$).

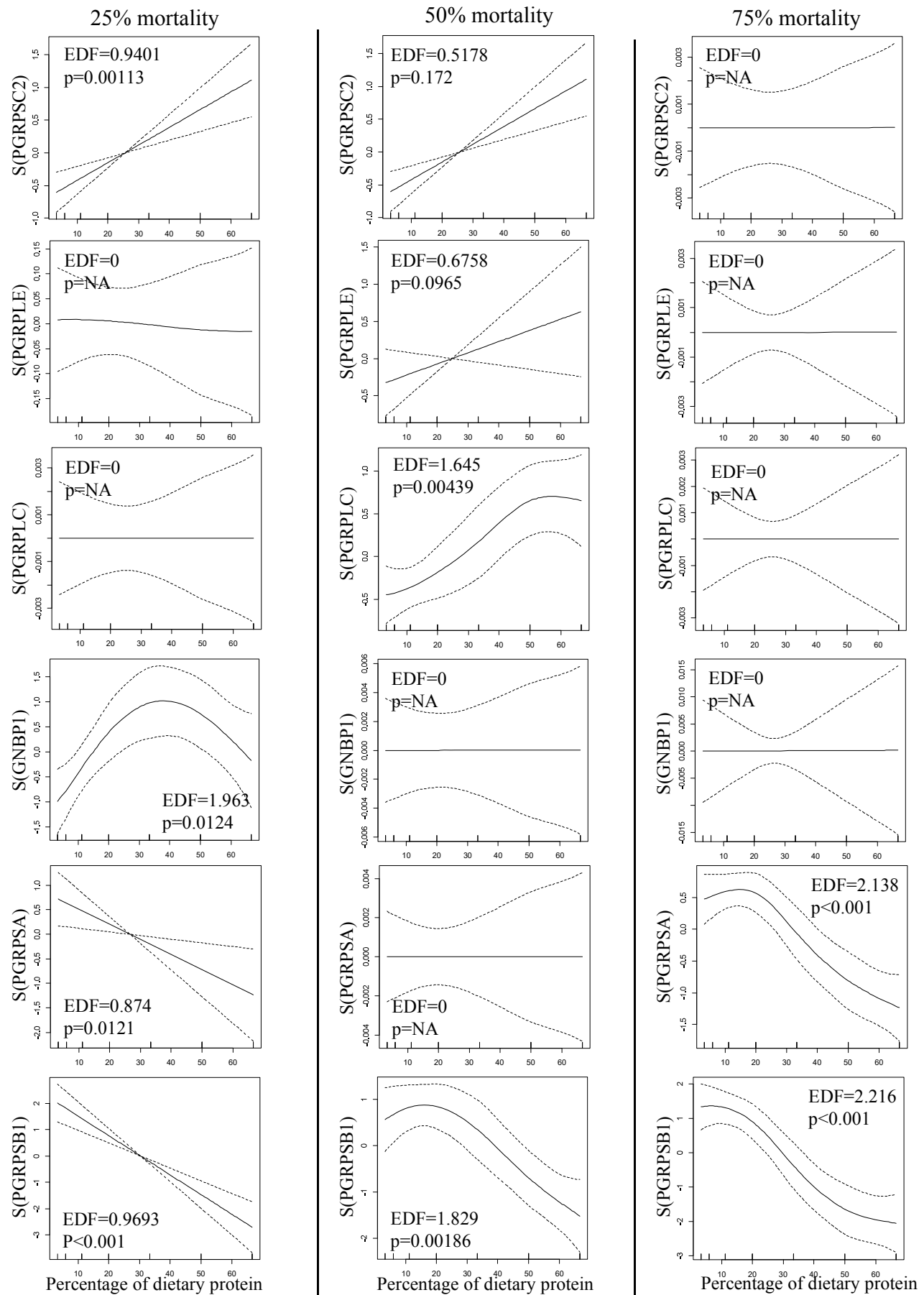


Supplementary Figure 2. Expression levels of immune receptors (mean \pm SE) according to the percentage of protein in the diet at: A. 25% mortality, B. 50% mortality, C. 75% mortality.

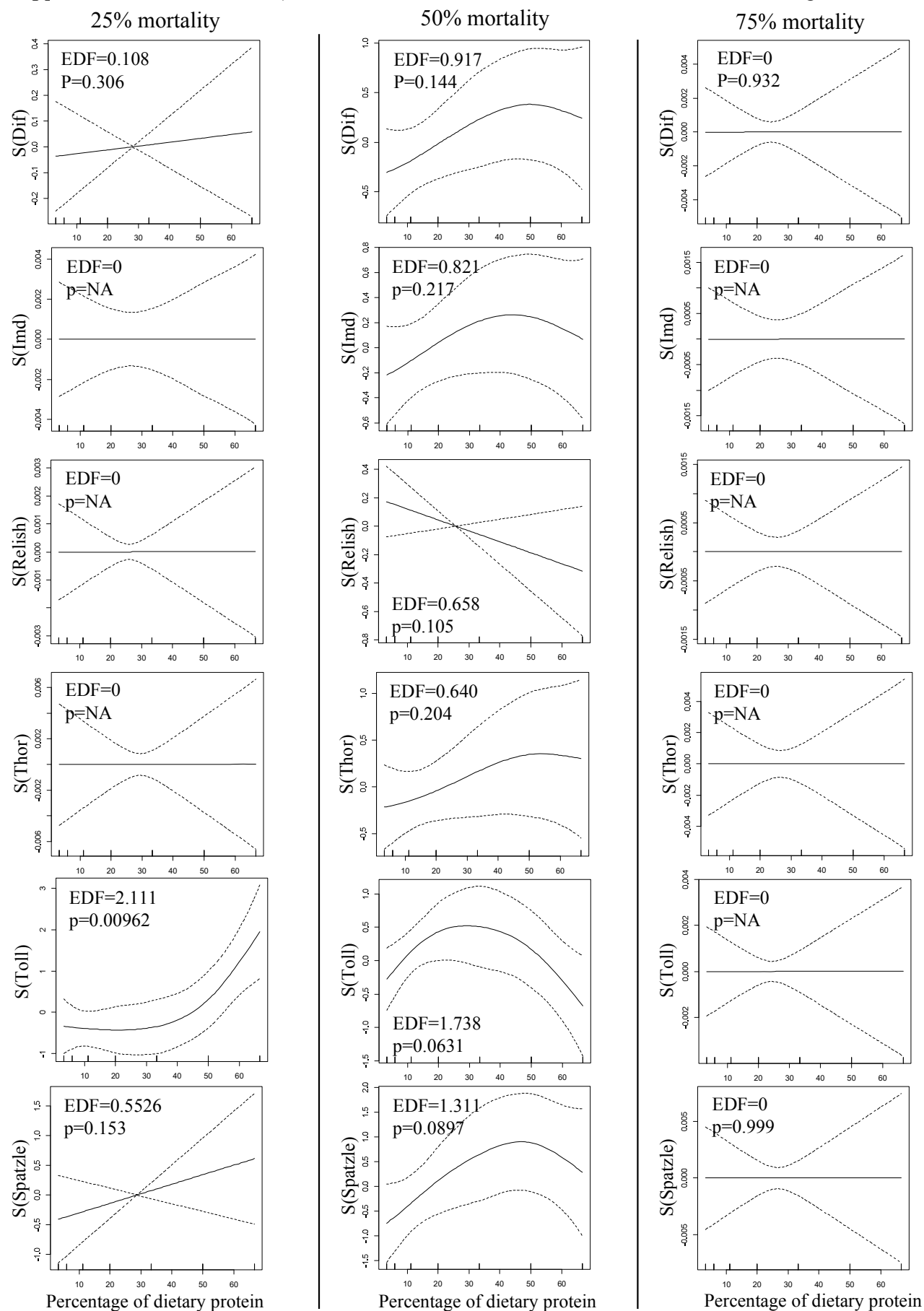


Supplementary Figure 3. Estimated nonparametric smooths of immune gene expression levels from the generalized additive model according to the percentage of dietary protein at 25%, 50% and 75% mortality.

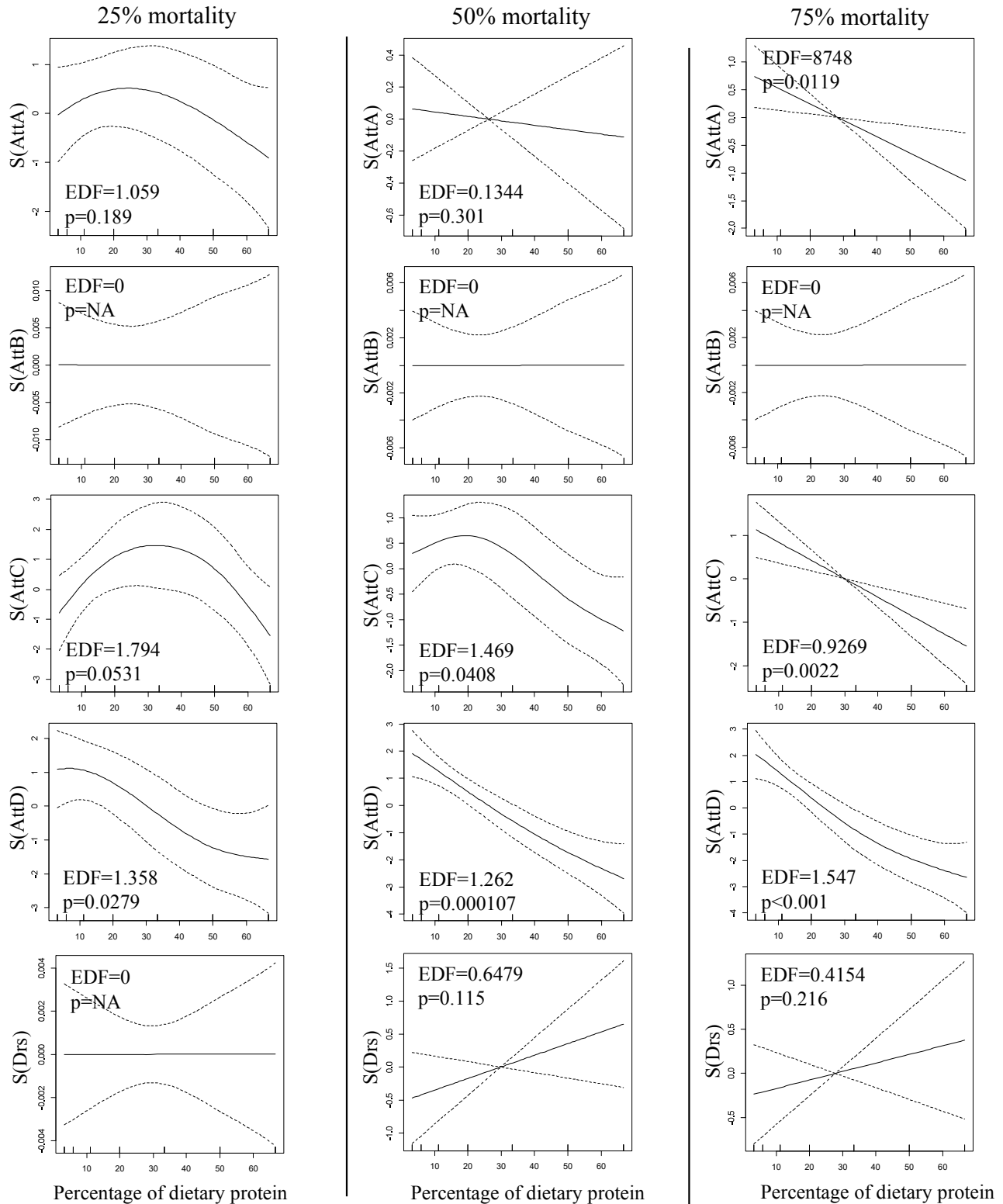
Supplementary Figure 3 (1/4) Molecules involved in the recognition of pathogens



Supplementary Figure 3 (2/4) Molecules involved in the transduction of the immune signal



Supplementary Figure 3 (3/4) Antimicrobials



Supplementary Figure 3 (4/4) Antimicrobials

