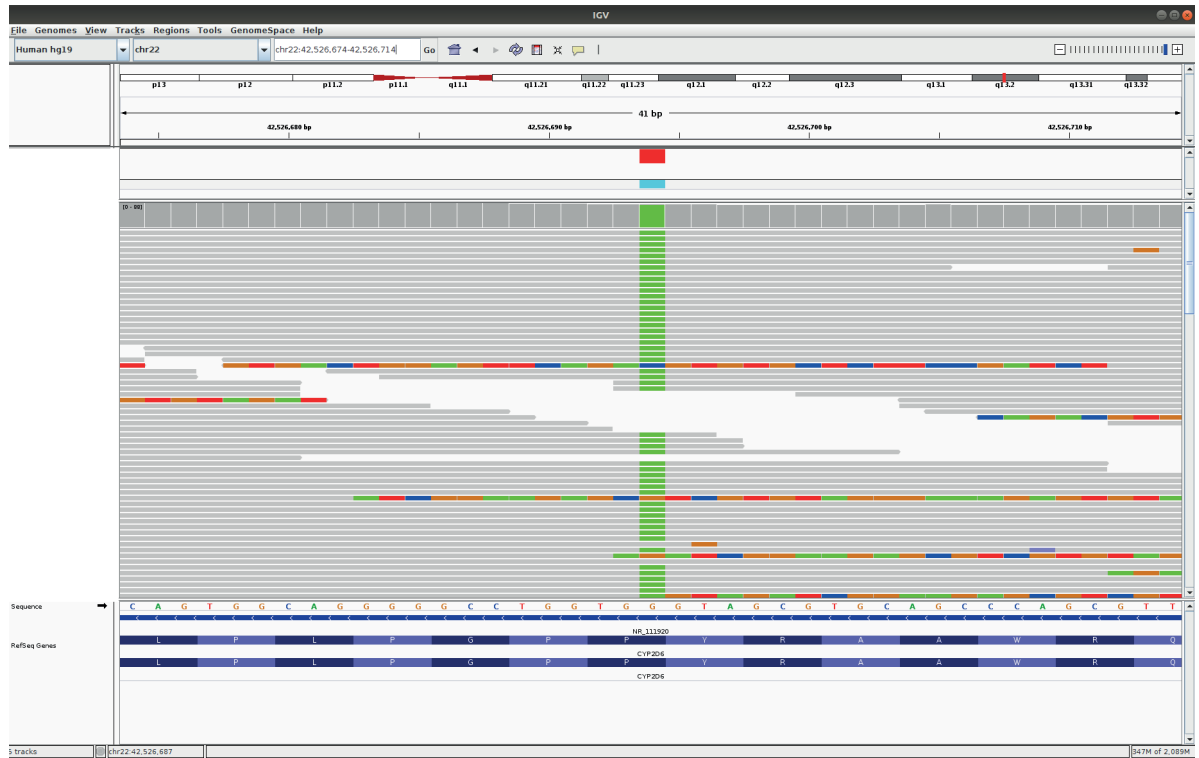


A



B

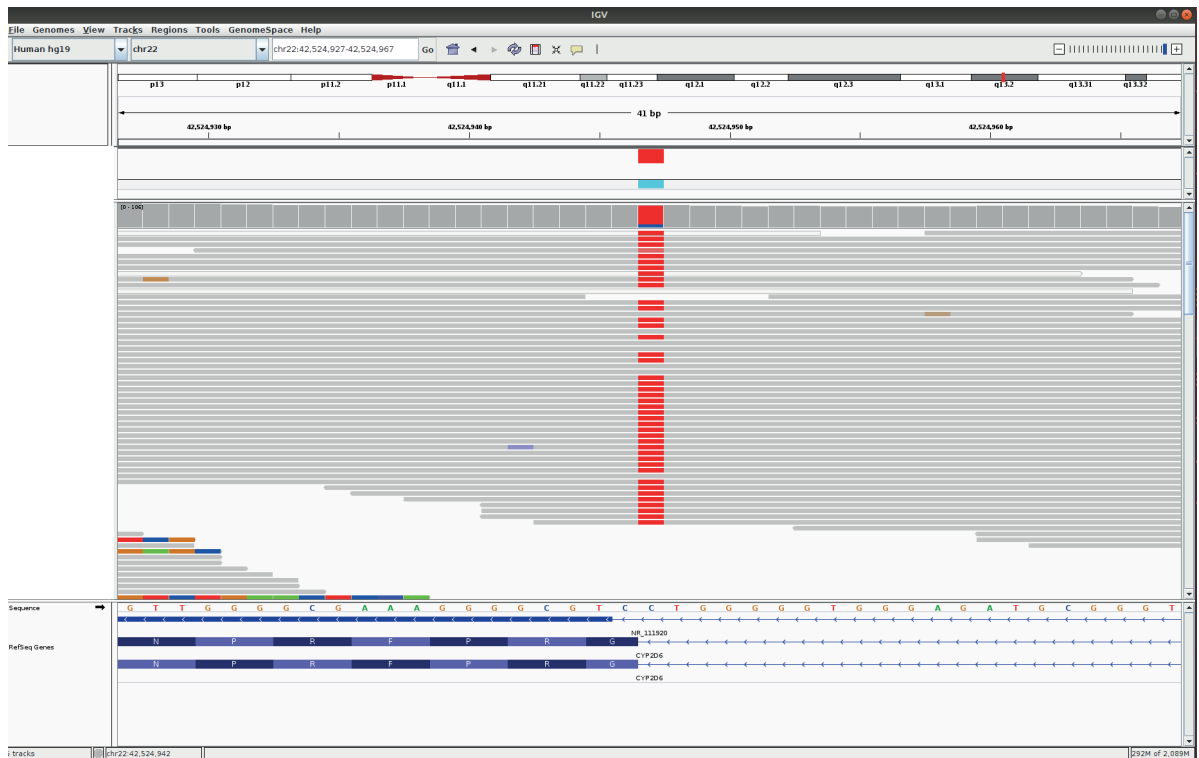


Figure S4: Readpile of individual for whom the CYP2D6 call is discrepant between Pharmacoscan (*4/*4) and WES data (*4/*10).

A. g. 42526694G>A, which is homozygous mutant, is found in both the CYP2D6 *4 and the CYP2D6*10 allele

B. g.42524947C>T for which the mutation is observed in 87% of all reads, is only found in the CYP2D6*4 allele